

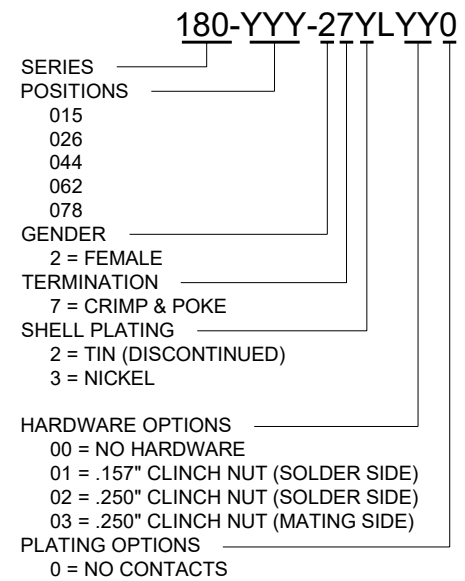
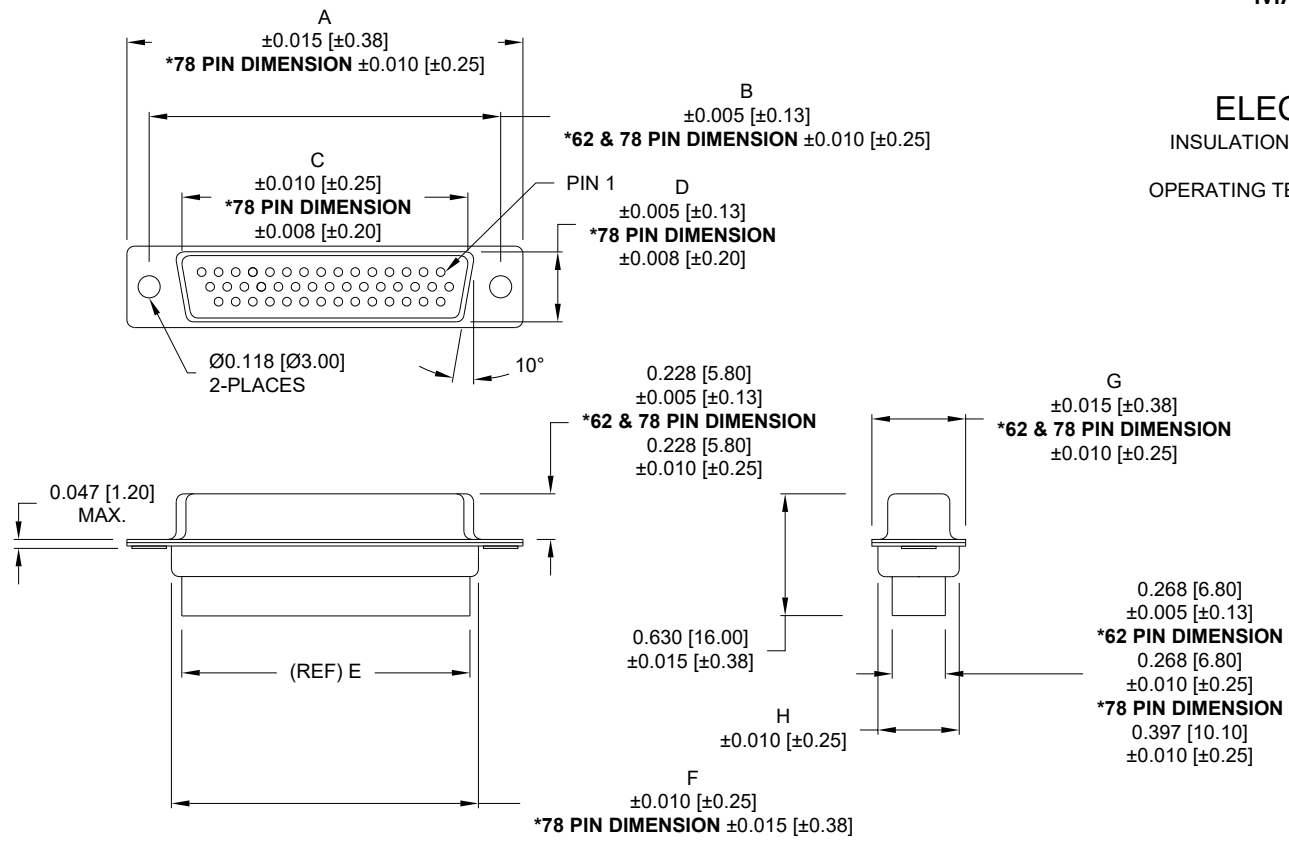
****NOTE: CONTACTS MUST BE PURCHASED SEPARATELY****

MATERIAL:

SHELL: NICKEL PLATED STEEL
 INSULATOR: PBT +30% GF, UL94 V-0, 230°C PROCESS TEMP

ELECTRICAL:

INSULATION RESISTANCE: 1,000 MOhms MIN.
 VOLTAGE: 500VAC FOR 1 MINUTE
 OPERATING TEMPERATURE: -50° C TO 100° C



		DIMENSIONS							
No. OF PINS	UNITS	A	B	C	D	E	F	G	H
15	inch	1.213	0.984	0.643	0.311	0.610	0.759	0.494	0.421
	mm	30.81	24.99	16.33	7.90	15.50	19.28	12.55	10.70
26	inch	1.541	1.312	0.970	0.311	0.964	1.089	0.494	0.421
	mm	39.14	33.32	24.66	7.90	24.50	27.65	12.55	10.70
44	inch	2.088	1.852	1.511	0.311	1.494	1.618	0.494	0.421
	mm	53.04	47.04	38.38	7.90	37.95	41.10	12.55	10.70
62	inch	2.736	2.500	2.157	0.311	2.142	2.262	0.494	0.421
	mm	69.50	63.50	54.80	7.90	54.40	57.46	12.55	10.70
4 ROWS 78	inch	2.644	2.406	2.061	0.422	2.035	2.169	0.605	0.527
	mm	67.16	61.11	52.34	10.72	51.70	55.10	15.37	13.40

RoHS COMPLIANT

UNITS = inch [mm]

DO NOT SCALE FROM DRAWING

NC THESE DRAWINGS AND SPECIFICATIONS ARE THE PROPERTY OF NorComp AND SHALL NOT BE REPRODUCED, COPIED OR USED AS THE BASIS FOR THE MANUFACTURE OR SALE OF APPARATUS WITHOUT WRITTEN PERMISSION.

DRAWN: P. JENKINS
 DATE: 07/19/2005

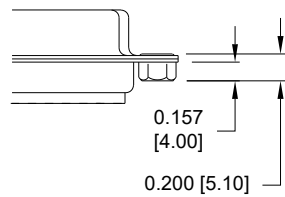
NorComp

SCALE: NTS SHEET 1 OF 2 REV 21
 DWG NO. 180-YYY-27YLYY0

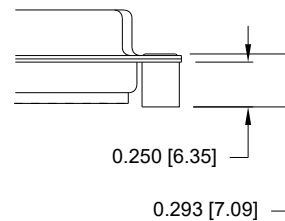
TOLERANCE:
ALL DIMENSIONS ARE ±0.010

ALL CLINCH-NUTS ARE 4-40 INTERNAL THREADS

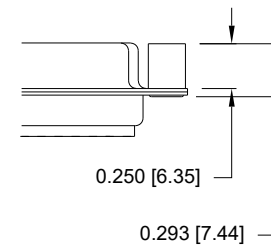
01 0.157" (SOLDER SIDE)



02 0.250" (SOLDER SIDE)



03 0.250" (MATING SIDE)



RoHS COMPLIANT

UNITS = inch [mm]

DO NOT SCALE FROM DRAWING



THESE DRAWINGS AND SPECIFICATIONS ARE THE PROPERTY OF NorComp AND SHALL NOT BE REPRODUCED, COPIED OR USED AS THE BASIS FOR THE MANUFACTURE OR SALE OF APPARATUS WITHOUT WRITTEN PERMISSION.

DRAWN:
P. JENKINS
DATE:
07/19/2005

NorComp

SCALE: NTS	SHEET 2	OF 2	REV 21
DWG NO.		180-YYY-27YLYY0	