

**PLEASE CHECK WWW.MOLEX.COM FOR LATEST PART INFORMATION**

**Part Number:** [0638138400](#)  
**Status:** **Active**  
**Overview:** [Application Tooling](#)  
**Description:** Extractor Tool for MOX 0.635mm Receptacle Crimp Terminals

**Documents:**  
[RoHS Certificate of Compliance \(PDF\)](#)

**General**

Product Family	Application Tooling
Series	<a href="#">207121</a>
Comments	See Tooling Specification (PDF) Above, See Tooling Specification (PDF) Above
Function	Extraction
Geographic Area	Global
Level of Automation	Manual
More Detailed Tech Information	<a href="mailto:applicationtooling@molex.com">applicationtooling@molex.com</a>
Overview	<a href="#">Application Tooling</a>
Product Name	MOX
Tool Type	Extraction Hand Tool
UPC	884982141339
Warranty Disclaimer	CAUTION: Molex tooling crimp specifications are valid only when used with Molex terminals and tooling manufactured by Molex and sold by Molex or authorized distributors ("Molex Tooling"). When using tooling other than Molex Tooling with Molex specific connector systems listed in our ATS documents, the Molex tooling qualification does not apply and the responsibility for full qualification of the connector system is that of the customer. Molex accepts no liability for connector performance or tooling support where tooling other than Molex Tooling is used or where Molex Tooling is modified.

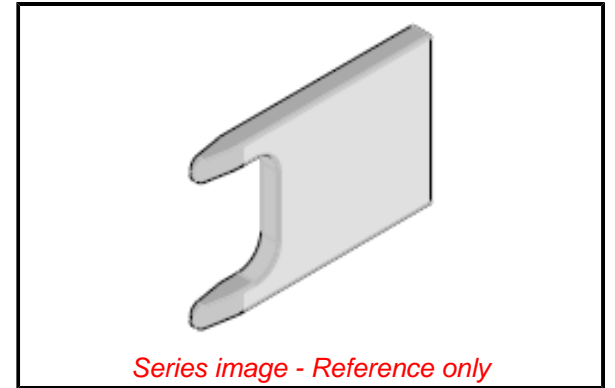
**Physical**

Net Weight 0.010/mg

**Material Info**

**Reference - Drawing Numbers**

Application Tooling Documents [ATS-638138400](#)



**EU ELV**

**Not Reviewed**

**EU RoHS**

**Not Reviewed**

**REACH SVHC**

Not Reviewed

**Halogen-Free**

**Status**

**Not Reviewed**

For more information, please visit [Contact US](#)

China ROHS

Not Reviewed

ELV

Not Reviewed

RoHS Phthalates

Not Reviewed

**Search Parts in this Series**

[207121](#) Series

**Use With**

[98982](#) 2.54mm Pitch MOX Receptacle Kit, 4 Rows, 40 Circuits

**Application Tooling** | **FAQ**

<b>Description</b>	<b>Product #</b>
--------------------	------------------

MOX Crimp Terminal, Female, 0.635mm, 20-24 AWG (0.22-0.60mm <sup>2</sup> ), Reel, Tin (Sn)	<a href="#">986581211</a>
--	---------------------------

MOX Crimp Terminal, Female, 0.635mm, 18-22 AWG (0.75mm <sup>2</sup> ), Reel, Tin (Sn)	<a href="#">986581212</a>
---	---------------------------

MOX Crimp Terminal, Female, 0.635mm, 20-24 AWG (0.22-0.50mm <sup>2</sup> ), Reel, Tin (Sn)	<a href="#">986581213</a>
--	---------------------------

MOX Crimp Terminal, Female, 0.635mm, 20-24 AWG (0.22-0.50mm <sup>2</sup> ), Reel, Tin (Sn)	<a href="#">986581213</a>
--	---------------------------

MOX Crimp Terminal, Female, 0.635mm, 20-24 AWG (0.22-0.50mm <sup>2</sup> ), Reel, Tin (Sn)	<a href="#">986581213</a>
--	---------------------------

MOX Crimp Terminal, Female, 0.635mm, 20-24 AWG (0.22-0.50mm <sup>2</sup> ), Reel, Tin (Sn)	<a href="#">986581213</a>
--	---------------------------

MOX Crimp Terminal, Female, 0.635mm, 20-24 AWG (0.22-0.50mm <sup>2</sup> ), Reel, Tin (Sn)	<a href="#">986581213</a>
--	---------------------------

MOX Crimp Terminal, Female, 0.635mm, 20-24 AWG (0.22-0.50mm <sup>2</sup> ), Reel, Tin (Sn)	<a href="#">986581213</a>
--	---------------------------

MOX Crimp Terminal, Female, 0.635mm, 20-24 AWG (0.22-0.50mm <sup>2</sup> ), Reel, Tin (Sn)	<a href="#">986581213</a>
--	---------------------------

MOX Crimp Terminal, Female, 0.635mm, 20-24 AWG (0.22-0.50mm <sup>2</sup> ), Reel, Tin (Sn)	<a href="#">986581213</a>
--	---------------------------

MOX Crimp Terminal, Female, 0.635mm, 20-24 AWG (0.22-0.50mm <sup>2</sup> ), Reel, Tin (Sn)	<a href="#">986581213</a>
--	---------------------------

MOX Crimp Terminal, Female, 0.635mm, 20-24 AWG (0.22-0.50mm <sup>2</sup> ), Reel, Tin (Sn)	<a href="#">986581213</a>
--	---------------------------

MOX Crimp Terminal, Female, 0.635mm, 20-24 AWG (0.22-0.50mm <sup>2</sup> ), Reel, Tin (Sn)	<a href="#">986581213</a>
--	---------------------------

MOX Crimp Terminal, Female, 0.635mm, 20-24 AWG (0.22-0.50mm <sup>2</sup> ), Reel, Tin (Sn)	<a href="#">986581213</a>
--	---------------------------

MOX Crimp Terminal, Female, 0.635mm, 20-24 AWG (0.22-0.50mm <sup>2</sup> ), Reel, Tin (Sn)	<a href="#">986581213</a>
--	---------------------------

MOX Crimp Terminal, Female, 0.635mm, 20-24 AWG (0.22-0.50mm <sup>2</sup> ), Reel, Tin (Sn)	<a href="#">986581213</a>
--	---------------------------

MOX Crimp Terminal, Female, 0.635mm, 20-24 AWG (0.22-0.50mm <sup>2</sup> ), Reel, Tin (Sn)	<a href="#">986581213</a>
--	---------------------------

MOX Crimp Terminal, Female, 0.635mm, 20-24 AWG (0.22-0.60mm <sup>2</sup> ), Reel, Selective Gold	<u>986581221</u>
MOX Crimp Terminal, Female, 0.635mm, 18-22 AWG (0.75mm <sup>2</sup> ), Reel, Selective Gold	<u>986581222</u>
MOX Crimp Terminal, Female, 0.635mm, 20-24 AWG (0.22-0.50mm <sup>2</sup> ), Reel, Selective Gold	<u>986581223</u>
MOX Crimp Terminal, Female, 0.635mm, 20-24 AWG (0.22-0.60mm <sup>2</sup> ), Reel, 2 Points Selective Gold	<u>986581231</u>
MOX Crimp Terminal, Female, 0.635mm, 18-22 AWG (0.75mm <sup>2</sup> ), Reel, 2 Points Selective Gold	<u>986581232</u>
MOX Crimp Terminal, Female, 0.635mm, 20-24 AWG (0.22-0.50mm <sup>2</sup> ), Reel, 2 Points Selective Gold	<u>986581233</u>
MOX Mounting Hsg Rcpt Gry 40Ckt	<u>989820028</u>
2.54mm Pitch MOX Receptacle Kit, Dual Row, 20 Circuits, White	<u>989821010</u>
2.54mm Pitch MOX Receptacle Kit, Dual Row, 20 Circuits, Blue	<u>989821016</u>
2.54mm Pitch MOX Receptacle Kit, 4 Rows, 40 Circuits, White	<u>989821020</u>
2.54mm Pitch MOX Receptacle Kit, 4 Rows, 40 Circuits, Black	<u>989821021</u>
2.54mm Pitch MOX Receptacle Kit, 4 Rows, 40 Circuits, Blue	<u>989821026</u>
2.54mm Pitch MOX Receptacle Kit, 4 Rows, 40 Circuits, Gray	<u>989821028</u>

This document was generated on 03/27/2019

**PLEASE CHECK [WWW.MOLEX.COM](http://WWW.MOLEX.COM) FOR LATEST PART INFORMATION**