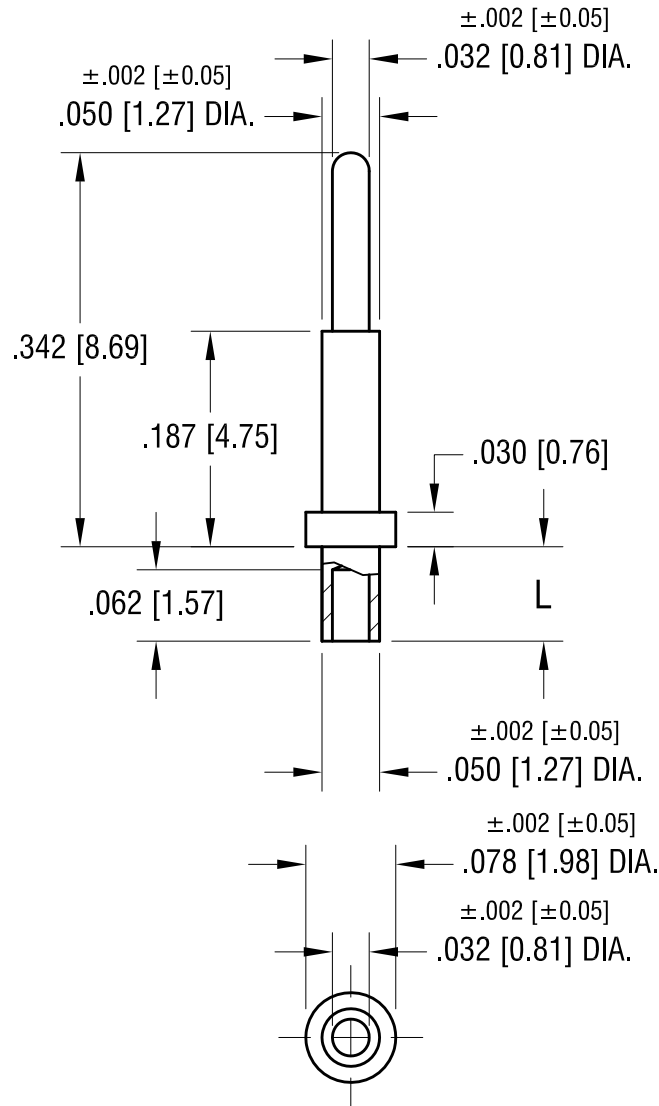


THIS DOCUMENT IS THE PROPERTY OF
KEYSTONE ELECTRONICS CORP. AND
SHALL NOT BE REPRODUCED, DISTRIBUTED
OR USED AS A BASIS FOR MANUFACTURE
WITHOUT PRIOR WRITTEN PERMISSION
FROM KEYSTONE ELECTRONICS CORP.

ACTUAL SIZE

P/M 1355-1



NOTE:
1. MOUNTING HOLE .052 [1.32] DIA.

PART NO.	'L' DIM.
1355-1	.051 [1.30]
1355-2	.082 [2.08]

DATE	DESCRIPTION	REV.
9.17.15	CHANGE AS PER ECN 15-101	A

KEYSTONE ELECTRONICS CORP.			
www.keyelco.com • NEW HYDE PARK, NY 11040 • Tel (516) 328-7500			
PART NAME			
MICRO-PIN, SWAGE MOUNT			
MATERIAL			
BRASS			
FINISH		DRN BY	DATE
TIN PLATE		BOONE	2.22.07
		APP'D	SCALE
		LN	6X
TOLERANCES	INCH [MM]	CODE	DWG NO.
DECIMAL	± .005 [± 0.13]	C	1355-
ANGULAR	± 1°		
UNLESS OTHERWISE SPECIFIED			