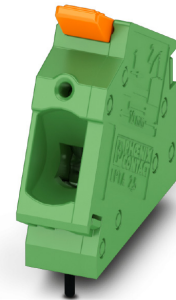


Data sheet

Order No.: 1190362

Type: LPTA 2,5/ 1-5,0

PCB terminal block, Lever Push-in connection



1 Main features



- | | | | |
|---------------------------|--------------------------|------------------------|---------------------|
| • No. of pos. | 1 | • Nominal current | 24 A |
| • Conductor cross section | 2.5 mm ² | • Nominal voltage | 400 V |
| • Color | green (6021) | • Connection direction | 45 ° |
| • Pitch | 5 mm | • Type of packaging | packed in cardboard |
| • Connection method | Lever Push-in connection | | |

2 Your advantages

- ✓ Tool-free lever principle enables time-saving connection and release of conductors with/without ferrules
- ✓ Clear lever positions provide reliable feedback on opened or closed clamping spaces
- ✓ Defined contact force ensures that contact remains stable over the long term
- ✓ Time-saving push-in connection when lever is closed
- ✓ Intuitive operation, thanks to a color-coded actuation lever



Make sure you always use the latest documentation.

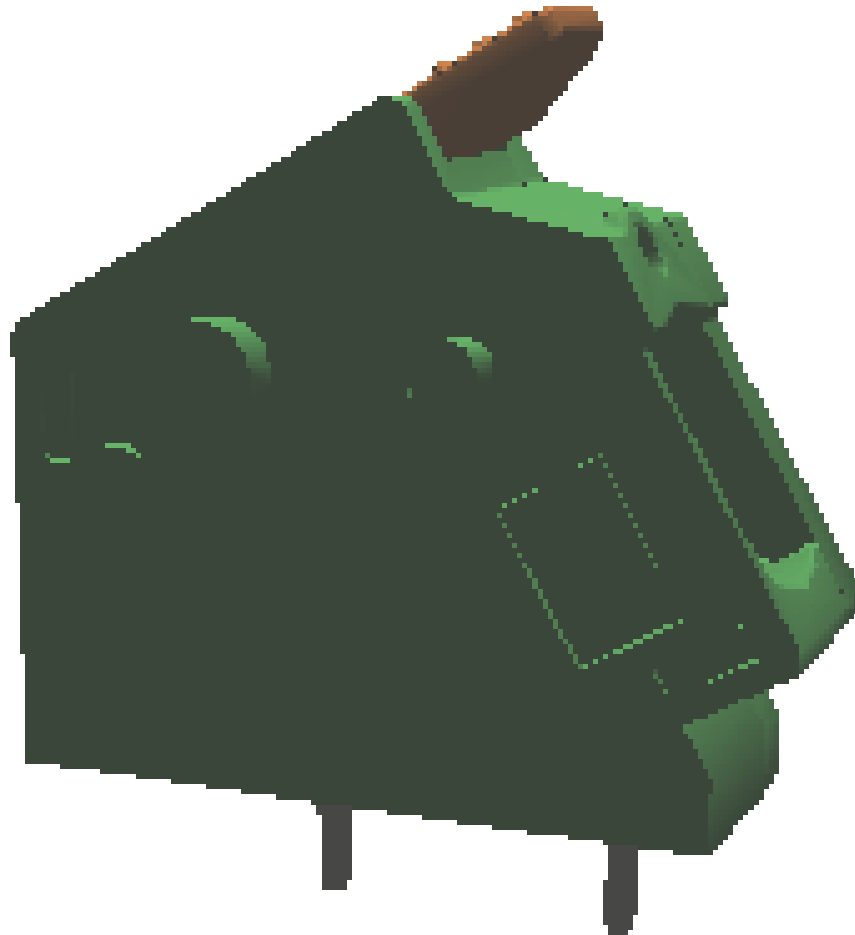
It can be downloaded at: phoenixcontact.net/product/1190362

3 Table of contents

1	Main features.....	1
2	Your advantages	1
3	Table of contents	2
4	3D model in PDF can be activated (Acrobat Reader only).....	3
5	General Technical Data	4
6	Conductor connection	5
7	Material properties.....	5
8	Dimensions.....	6
9	Series drawing.....	7
10	Application.....	8
11	Packaging information	8
12	Mechanical tests.....	9
13	Electrical tests	10
14	Current carrying capacity/derating curves	12
15	Environmental and durability tests	13
16	Commercial Data.....	14

1190362 LPTA 2,5/ 1-5,0

4 3D model in PDF can be activated (Acrobat Reader only)



1190362 LPTA 2,5/ 1-5,0**5 General Technical Data****5.1 item properties**

Order No.	1190362
Type	LPTA 2,5/ 1-5,0
Product type	PCB terminal block
Range of articles	LPTA 2,5/
Pitch	5 mm
Number of positions	1
Number of levels	1
Number of connections	1
Number of potentials	1
Connection method	Lever Push-in connection
Mounting type	Wave soldering
Connection direction of the conductor to the PCB	45 °
Pin layout	Linear double pinning

1190362 LPTA 2,5/ 1-5,0**6 Conductor connection****6.1 Connection capacity**

Conductor cross section, rigid	0.2 mm ² ... 4 mm ² (Conductor connection with open terminal point)
Conductor cross section, rigid	0.5 mm ² ... 4 mm ² (Push-in connection)
Conductor cross section, flexible	0.2 mm ² ... 4 mm ²
Conductor cross section flexible, with ferrule without plastic sleeve	0.2 mm ² ... 2.5 mm ² (Conductor connection with open terminal point)
Conductor cross section flexible, with ferrule with plastic sleeve	0.2 mm ² ... 2.5 mm ² (Conductor connection with open terminal point)
2 conductors with the same cross section flexible with TWIN ferrule and plastic sleeve	0.5 mm ² ... 1.5 mm ²
Stripping length	10 mm ... 12 mm

6.2 Connection capacity AWG

Conductor cross section AWG	24 ... 12
-----------------------------	-----------

7 Material properties**7.1 Material of metal parts**

Note	WEEE/RoHS-compliant, whisker-free acc. to IEC 60068-2-82/JEDEC JESD 201
Contact material	Cu alloy
Terminal point surface	Tin (10 - 16 µm Sn)
Soldering area surface	Tin (10 - 16 µm Sn)
Surface characteristics	Tin-plated

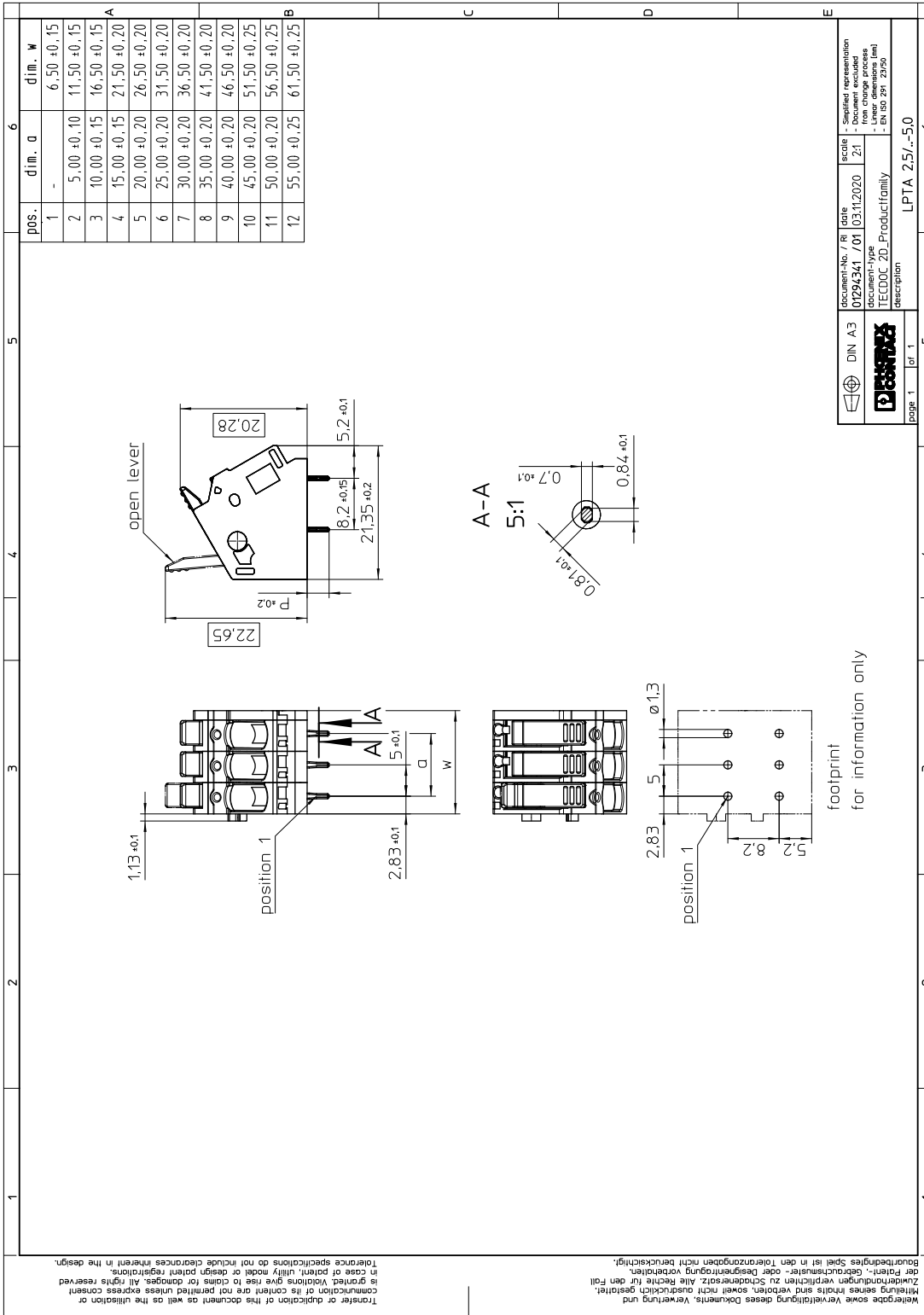
7.2 Material of plastic parts

	Housing	Actuation element
Color	green (6021)	orange (2003)
Insulating material	PA	PA GF
Insulating material group	I	I
CTI according to IEC 60112	600	600
Flammability rating according to UL 94	V0	V0
Glow wire flammability index GWFI according to EN 60695-2-12	850	
Glow wire ignition temperature GWIT according to EN 60695-2-13	775	
Temperature for the ball pressure test according to EN 60695-10-2	125 °C	

1190362 LPTA 2,5/ 1-5,0**8 Dimensions****8.1 Dimensions for the product**

Length	21.35 mm
Width	6.5 mm
Height (without solder pin)	20.28 mm
Total height	23.78 mm
Solder pin [P]	3.5 mm

9 Series drawing



Wiedergabe sowie Vervielfältigung dieses Dokuments, Verwertung und Mitteilung seines Inhalts sind verboten, soweit nicht ausdrücklich gestattet. Zuwahlungen verpflichten zu Schadenersatz. Alle Rechte für den Fall der Patent-, Gebrauchsmuster- oder Designrechte vorbehalten.
 Bauraufbauzeichnungen sind in den Toleranzangaben nicht berücksichtigt.
 Tolerance specifications do not include clearances inherent in the design.
 In case of patent, utility, model or design patent registrations, is granted. Violations give rise to claims for damages. All rights reserved.

DIN A3	document-No. / Ri 01294341 / 01	date 03.11.2020	scale Z1	Supplied representation - from change process
TECDOC 2D_Productfamily	document-type	description	Linear dimensions (mm)	- EN ISO 291 - 2950
page 1	of 1	LPTA 2,5/...-5,0		

1190362 LPTA 2,5/ 1-5,0

10 Application**11 Packaging information**

Type of packaging	packed in cardboard
Pieces per package	100

11.1 Temperature limit values

Ambient temperature (storage/transport)	-40 °C ... 70 °C
Ambient temperature (assembly)	-5 °C ... 100 °C
Ambient temperature (operation)	-40 °C ... 105 °C (Depending on the current carrying capacity/derating curve)

1190362 LPTA 2,5/ 1-5,0**12 Mechanical tests****12.1 Pull-out test**

Specification	IEC 60999-1:1999-11
Result	Test passed
Conductor cross section/conductor type/tractive force actual value	0.2 mm ² / solid / > 10 N
Conductor cross section/conductor type/tractive force actual value	0.2 mm ² / flexible / > 10 N
Conductor cross section/conductor type/tractive force actual value	4 mm ² / solid / > 60 N
Conductor cross section/conductor type/tractive force actual value	4 mm ² / flexible / > 60 N
Conductor cross section/conductor type/tractive force actual value	0.5 mm ² / solid / > 20 N

12.2 Check for damage to conductor or loosening

Specification	IEC 60999-1:1999-11
Result	Test passed

1190362 LPTA 2,5/ 1-5,0**13 Electrical tests**

Rated current / conductor cross section	24 A / 2.5 mm ²
Rated insulation voltage (III/2)	400 V
Rated surge voltage (III/2)	4 kV
Contact resistance	0.35 mΩ
Degree of pollution	2

13.1 Air and creepage distances

Component	PCB terminal block		
Specification	IEC 60947-7-4:2019-01		
Mains type	unearthed mains		
Insulating material group			
Comparative tracking index (IEC 60112:2003-01)			
Rated insulation voltage	320 V	400 V	630 V
Rated surge voltage	4 kV	4 kV	4 kV
Degree of pollution	3	2	2
Overvoltage category	III	III	II
Minimum clearance case A (inhomogeneous field)	3 mm	3 mm	3 mm
Minimum value of the creepage path requirement in acc. with table	4 mm	3 mm	3.2 mm

13.2 Short-time withstand current test

Specification	IEC 60947-7-4:2019-01
Result	Test passed
Conductor cross section/short-time current	4 mm ² / 168 A

13.3 Aging test (climatic impact and corrosion testing)

Specification	IEC 60947-7-4:2019-01
Result	Test passed
Contact resistance R ₁	0.35 mΩ / 4 mm ²
Test sequence 1: low temperature storage	-40 °C / 2 h
Test sequence 2: heat storage	168 h/105 °C
Test sequence 3: noxious gas storage (ISO 6988)	KFW 0.2 S/1 cycle
Contact resistance R ₂	0.41 mΩ / 4 mm ²
Rated impulse voltage at sea level Voltage waveform ≥ (1.2/50 μs)	4.8 kV
Power-frequency withstand voltage Voltage waveform ≥ (50/60 Hz)	3.1 kV

13.4 Insulation resistance

Specification	IEC 60512-3-1:2002-02
Result	Test passed
Insulation resistance, neighboring positions	> 5 MΩ

1190362 LPTA 2,5/ 1-5,0**13.5 Mechanical connection test for the PCB terminal block**

Specification	IEC 60947-7-4:2019-01
Result	Test passed

13.6 Temperature rise test

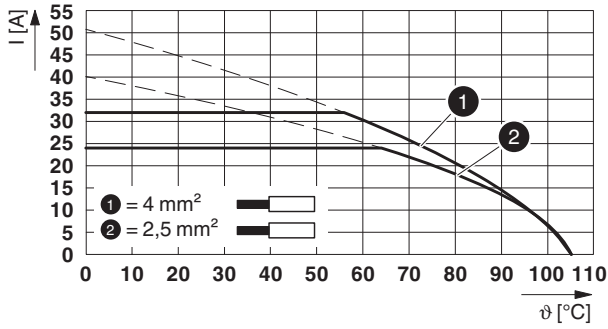
Specification	IEC 60947-7-4:2019-01
Result	Test passed
Requirement temperature-rise test	The sum of ambient temperature and temperature rise of the PCB terminal block shall not exceed the upper limiting temperature.
Conductor cross section/test current/temperature rise	2.5 mm ² / 24 A / 41.4 K
Conductor cross section/test current/temperature rise	4 mm ² / 32 A / 49.3 K

1190362 LPTA 2,5/ 1-5,0

14 Current carrying capacity/derating curves

Specification	IEC 60947-7-4:2019-01
Note	Representation based on IEC 60512-5-2:2002-02
Reduction factor	1
Number of positions	4
Conductor cross section	2.5 mm ²

Type: LPTA 2,5/...-5,0



1190362 LPTA 2,5/ 1-5,0**15 Environmental and durability tests****15.1 Vibration test**

Specification	IEC 60068-2-6:2007-12
Result	Test passed
Frequency	10 - 150 - 10 Hz
Sweep speed	1 octave/min
Amplitude	0.35 mm (10 - 60.1 Hz)
Acceleration	50 m/s ² (60.1 - 150 Hz)
Test duration per axis	2.5 h
Test directions	X-, Y- and Z-axis
Note	

15.2 Assessment of fire risk (glow wire test)

Specification	IEC 60695-2-10:2013-04		
Result	Test passed		
Temperature	850 °C		
Time of exposure	5 s		

15.3 Shock protection

Specification	Following IEC 60529:1989-11 + AMD 1:1999-11 + AMD 2:2013-08
Back of the hand protection (Ball ø 50)	
Finger protection (movable test finger)	guaranteed
Note	unenclosed basic insulation - protected against finger contact with IP20 test finger in acc. with IEC 60529 when connected, above the PCB

1190362 LPTA 2,5/ 1-5,0**16 Commercial Data**

Order No.	1190362
Type	LPTA 2,5/ 1-5,0
Pieces per package	100
Net weight	2.22 g
GTIN	4063151239947
	Information that applies locally, see link on page 1
	Information that applies locally, see link on page 1