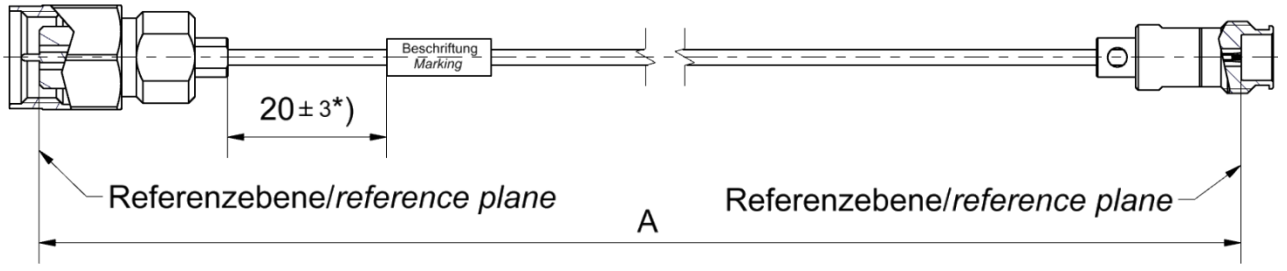


<b>Technical Data Sheet</b>	<h1 style="color: red; margin: 0;">Rosenberger</h1>
-----------------------------	---

<b>Cable assembly</b> RPC-1.85 Plug – RTK 047-F – RPC-1.35 Jack	<h2 style="margin: 0;">L70-387-XXX</h2>
--	---



All dimensions are in mm; tolerances: ± 3mm for A ≤ 300 mm; ± 1% for A > 300 mm  
 \*) If length "A" ≤ 90 mm marking is mount centric ± 5mm

### Available variants

Type	max. Insertion loss	Marking	Weight (g) / pce
L70-387-XXX	$\leq (0.0020 * \sqrt{f[\text{GHz}]} + 0.00008 * f[\text{GHz}]) \frac{\text{dB}}{\text{mm}}$	ROSENBERGER    YYYY-WW L70-387-XXX        sssss	$0.0056 \frac{\text{g}}{\text{mm}} * A[\text{mm}] + 4.90 \text{ g}$

XXX – length in mm = A                      Maximum possible length = 6000mm  
 WW – week                                      YYYY – year                                      sssss – serial no.

Note:                      Weight:  
 First constant = Cable weight per mm; Second Constant = Connector left and Connector right weight per pce

### Assembly parts

- |                 |               |
|-----------------|---------------|
| Connector left  | RPC-1.85 Plug |
| Connector right | RPC-1.35 Jack |
| Cable           | RTK 047-F     |
| Armour          | none          |

### Electrical data

- |                             |  |
|-----------------------------|--|
| Impedance                   | 50 Ω   |
| Frequency                   | DC to 70 GHz                                   |
| Return loss <sup>1</sup>    | ≥ 17 dB, DC to 50 GHz<br>≥ 14 dB, 50 to 70 GHz |
| Insertion loss <sup>1</sup> | see table available variants                   |

Individual testing and documentation:  
 Measurement plot with all 4 S – Parameters (S11; S22; S21; S12) is included with the cable assembly and on the backside the care and handling instruction is printed.

<sup>1</sup> Return Loss and Insertion Loss includes the measurement adaptor

### Mechanical data

- |                             |         |
|-----------------------------|---------|
| Minimum bend radius static  | 7.0 mm  |
| Minimum bend radius dynamic | 14.0 mm |

### Environmental data

- |                   |                    |
|-------------------|--------------------|
| Temperature range | - 40 °C to + 85 °C |
| RoHS              | compliant          |

While the information has been carefully compiled to the best of our knowledge, nothing is intended as representation or warranty on our part and no statement herein shall be construed as recommendation to infringe existing patents. In the effort to improve our products, we reserve the right to make changes judged to be necessary.

For the installation of the electrotechnical equipment, particular electrotechnical expertise is required.



Draft	Date	Approved	Date	Rev.	Engineering change number	Name	Date
Marcel Panicke	22.10.19	Ronny Mark	12.01.23	b00	22-2195	Marion Striegler	11.01.23