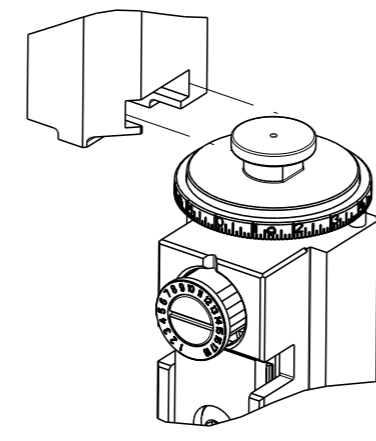


PART NUMBER	REVISION	DESCRIPTION	FEED TYPE
2150381-1	C	FINE CRIMP HEIGHT ADJUST	MECHANICAL
2150381-2	C	FINE CRIMP HEIGHT ADJUST	PNEUMATIC
7-2150381-1	C	MECHANICAL AND CRIMP TOOLING KIT	MECHANICAL
7-2150381-2	C	PNEUMATIC AND CRIMP TOOLING KIT	PNEUMATIC
7-2150381-7	A	CRIMP TOOLING KIT	-

ATLANTIC VERSION TERMINATOR INTERFACE ADAPTER



APPLICATOR DATA		
CRIMP	SIZE	TYPE
WIRE	3.05 mm [.120]	F
INSUL	3.56 mm [.140]	Ø
APPL INSTRUCTIONS 408-35043		

TERMINAL DATA: TE TERMINAL TE CRIMP SPECIFICATION			
TERMINAL NAME: RING			
WIRE STRIP LENGTH		INSULATION DIAMETER RANGE	
2.79-3.56 mm [.110-.140 IN]		Ø1.91-2.79 mm [.075-.110 IN]	
TERMINAL APPLICATION SPECIFICATION	114-2084	-	-
TERMINALS APPLIED			
TE TERMINAL	TE TERMINAL	TE TERMINAL	TE TERMINAL
160344-1	160344-2	41406	41406-1
42065	42721-1	63514-1	

WIRE SIZE	CRIMP HEIGHT mm [INCH]	CRIMP HEIGHT REFERENCE SETTING
16 AWG	1.63 +/- 0.05 [0.064 +/- .002]	6.3
18 AWG	1.50 +/- 0.05 [0.059 +/- .002]	7.7
20 AWG	1.45 +/- 0.05 [0.057 +/- .002]	8.2

- RECOMMENDED SPARE PARTS
  - REFER TO SUPPLIED INSTRUCTION SHEET FOR CLEANING, LUBRICATION AND STORAGE OF APPLICATOR.
  - APPLY PART NUMBER 2-23419-6 LOCTITE TO THREADS OF ITEM 242.
  - CRIMP HEIGHT REFERENCE SETTING WAS THE SETTING USED WHEN THE APPLICATOR WAS QUALIFIED AT THE FACTORY. ADJUSTMENT MAY BE NECESSARY WHEN RUNNING APPLICATOR IN THE FIELD.
  - THE RECOMMENDED SET-UP FOR END FEED APPLICATORS IS POST-FEED WITH ITEM 2119653-1. THE APPLICATOR CAN BE CONFIGURED FOR PRE-FEED WITH ITEM 2119652-1 BUT MAY ENCOUNTER PROBLEMS WITH SOME APPLICATIONS. FEED ISSUES OR TERMINAL JAMMING MAY OCCUR IN THE PRE-FEED CONFIGURATION.
  - WIRE BARREL SEAM DOES NOT FULLY CLOSE ON 16 AWG WIRE SIZE, THEREFORE USE OF THIS WIRE SIZE IS NOT RECOMMENDED BY A.T. HOWEVER, IS APPROVED BY TERMINAL PRODUCT ENGINEER.
  - TERMINAL LUBRICANT IS RECOMMENDED.
8. UNLESS SPECIFIED OTHERWISE TORQUE VALUES SHALL BE USED PER DOCUMENT, 101-35000.

**\*WARNING**  
ON INSTALLATION, SET WIRE DISC TO CRIMP HEIGHT REFERENCE SETTING FOR LARGEST WIRE SIZE. CRIMP HEIGHT REFERENCE SETTINGS GREATER THAN THE VALUE SHOWN MAY CAUSE DAMAGE TO THE CRIMP TOOLING, REFER TO THE INSTRUCTION SHEET FOR PROPER SETUP AND ADJUSTMENTS.

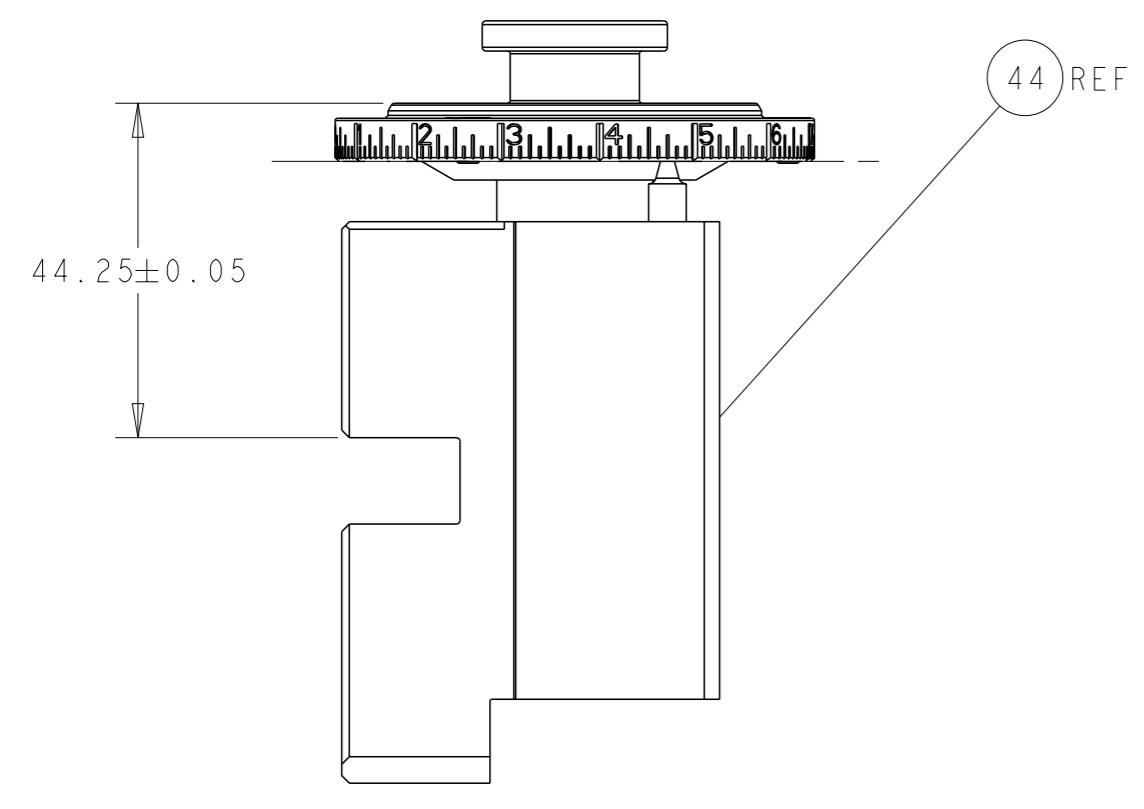
**ATLANTIC VERSION**  
Shown on sheets 1 of 4 & 2 of 4  
(Pacific version shown on sheets 3 of 4 & 4 of 4)

LOC	DIST	REVISIONS					
A	66	P	LY#	DESCRIPTION	DATE	OWN	APVD
		A		RELEASED	15NOV2013	LG	TE
		B		ECR-17-002055	17FEB2017	TB	TE
		C		ECR-19-000344	09JAN2020	FJ	TE

-	1	-	1	-	2119641-1	FEED CAM, AIR FEED	248
-	1	1	1	1	2119082-9	CAM, SNAIL, INSULATION ADJUSTMENT	244
-	1	1	1	1	2079764-1	WASHER, WAVE SPRING, CREST-TO-CREST	243
-	1	1	1	1	2119083-1	RETAINER, INSULATION DIAL	242
-	-	1	-	1	2119580-1	MECHANICAL FEED ASSEMBLY	239
-	1	-	1	-	2844940-3	AIR FEED MODULE	238
-	1	1	1	1	1-18028-0	WASHER, FLAT, REG M8	192
-	REF	REF	REF	REF	994970-2	COUNTER, MAGNETIC	164
-	1	1	1	1	2119955-2	ASSY, LUBRICATOR, END FEED	84
-	1	1	1	1	455888-4	SPACER, CRIMPER	82
-	1	1	1	1	1803607-4	DOCUMENTATION PACKAGE	71
-	2	2	2	2	2-18032-2	SCR, SET, FLT PNT, M3 X 10.0	70
-	1	1	1	1	2119740-1	TAG, IDENTIFICATION	67
-	2	2	2	2	2168078-1	SCREW, DRIVE, RH, RoHS, 2 x .188	66
-	1	1	1	1	2168083-2	SCR, SKT HD CAP, RoHS, M4 X 8.0	60
-	1	1	1	1	5-18022-5	SCR, HEX HD CAP, M4 X 6.0	59
-	-	1	-	1	2063961-1	FEED FINGER	58
-	4	4	4	4	2168400-4	SHCS, LOW HEAD, RoHS, M4 X 8	57
-	2	2	2	2	1-2168083-4	SCR, SKT HD CAP, RoHS, M4 X 5	56
-	2	2	2	2	5018030-1	NUT, HEX, REG, RoHS, M3	54
-	2	2	2	2	986965-8	NUT, LOCK, HEX, TORQUE (M4)	53
-	1	-	1	-	2063961-9	FEED FINGER	51
-	1	2	1	2	18023-9	SCR, SKT HD CAP M4 X 6.0	49
-	-	1	-	1	2119652-1	FEED CAM, PRE FEED	48
-	-	1	-	1	2119653-1	FEED CAM, POST FEED	47
-	1	1	1	1	2119655-5	APPLICATOR BASIC ASSEMBLY, EF	46
-	1	1	1	1	1803517-1	RAM ASSEMBLY, EF ATLANTIC	44
-	1	1	1	1	1803602-1	SCR, BHSC, RoHS (M8 X 25)	41
-	8	8	8	8	1-18028-2	WASHER, FLAT, REG M4	33
-	2	2	2	2	2168083-9	SCR, SKT HD CAP, RoHS, M4 X 20	31
-	2	2	2	2	2168083-2	SCR, SKT HD CAP, RoHS, M4 X 8.0	29
-	1	1	1	1	240639-1	STRIPPER (MACHINING)	27
-	2	2	2	2	1-2168083-5	SCR, SKT HD CAP, RoHS, M4 X 30	25
-	1	1	1	1	1752371-1	PLATE, STRIP GUIDE	24
-	2	2	2	2	2-22281-3	SPRING, COMPRESSION	22
-	1	1	1	1	1803292-4	DRAG	20
-	1	1	1	1	1901696-9	STRIP GUIDE, REAR	19
-	1	1	1	1	1901695-9	STRIP GUIDE, FRONT	18
-	4	4	4	4	1-2079383-1	SCR, BHSC, RoHS (M6 X 12)	17
-	1	1	1	1	240644-1	PLATE, REAR SHEAR	11
-	-	-	-	-	-	-	10
-	1	1	1	1	690482-1	PLATE, FRONT SHEAR	9
-	1	2	2	1	2-1333220-4	ANVIL, COMBINATION, .120	8
-	1	1	1	1	2217206-1	BLADE, SLUG	7
-	-	-	-	-	-	-	6
-	1	1	1	1	1-240641-7	SPACER	5
-	1	1	1	1	3-238011-1	BLOCK, CRIMPER SPACER	4
-	1	2	2	1	1633965-9	CRIMPER, INSULATION O PREMIUM	3
-	1	1	1	1	455888-4	SPACER, CRIMPER	2
-	1	2	2	1	456409-2	CRIMPER, WIRE .120 "F" PREMIUM	1
-	77	72	71	2	-1	PART NO	ITEM NO

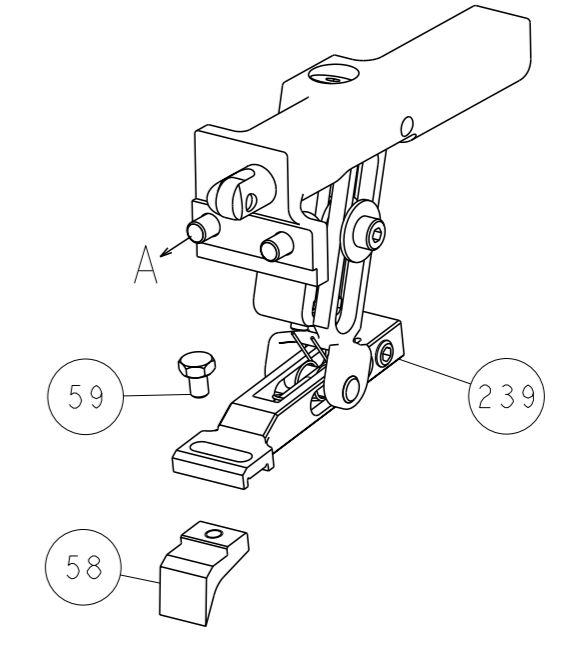
DIMENSIONS:		TOLERANCES UNLESS OTHERWISE SPECIFIED:		TE Connectivity Harrisburg, PA 17105-3608	
mm	0 PLC ±	1 PLC ±	2 PLC ±	3 PLC ±	4 PLC ±
ANGLES	FINISH		MATERIAL		WEIGHT
MATERIAL		FINISH		WEIGHT	
Customer Accessible Production Drawing		SCALE	1:1	SHEET	1 of 4
REV		C		REV	

LOC	DIST	REVISIONS				
A	66	REV	DATE	OWN	APVD	
		-				
		SEE SHEET 1				

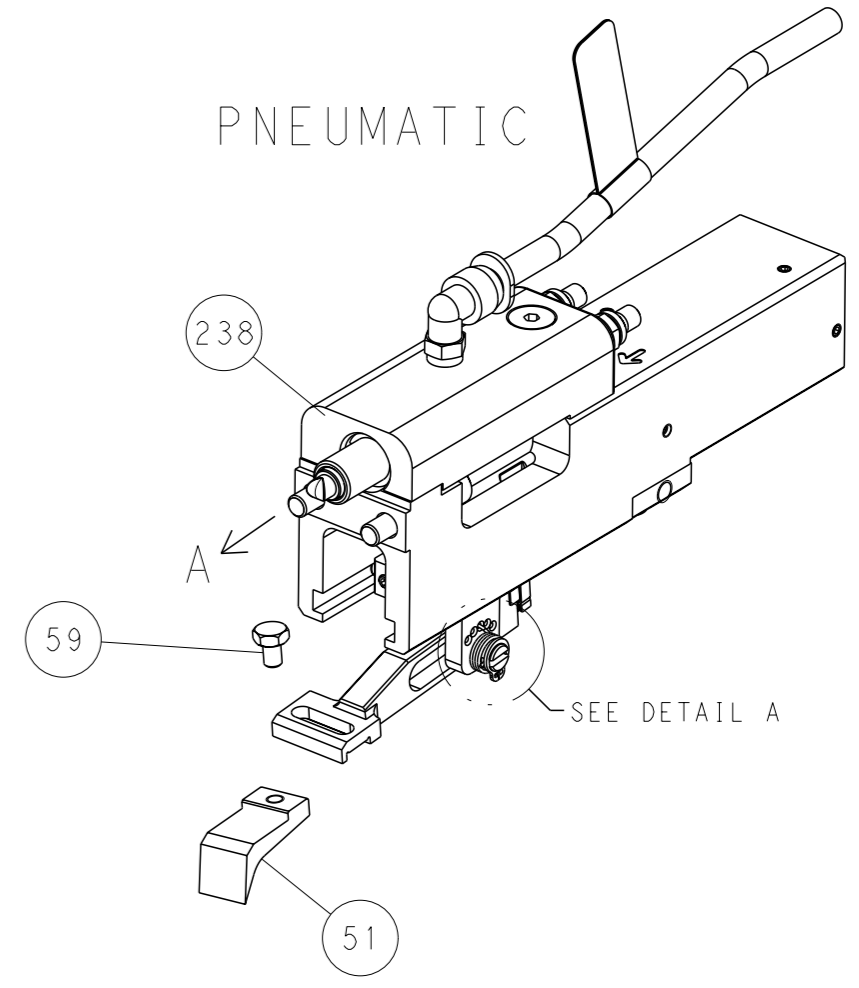


RAM SET-UP

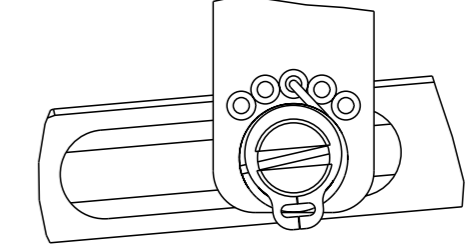
FEED TYPE  
MECHANICAL



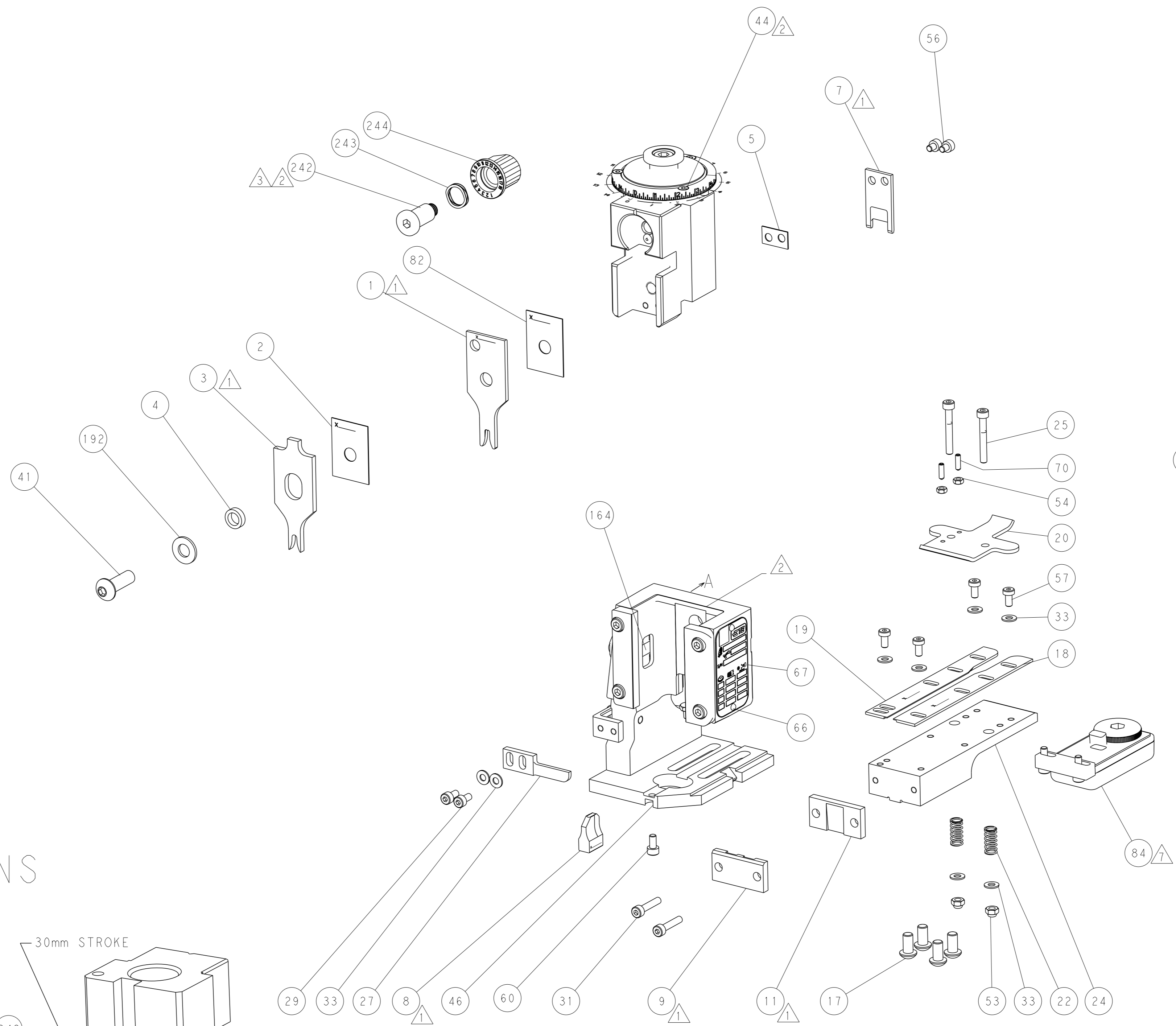
PNEUMATIC



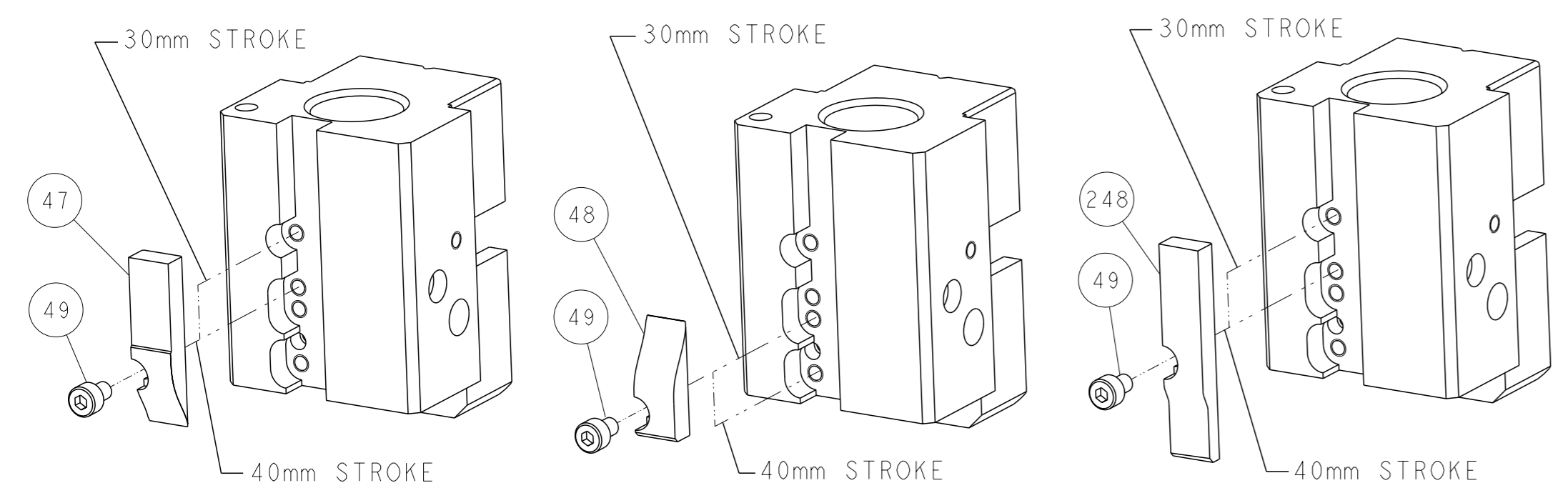
FEED SPRING  
SETTING POSITION



DETAIL A



CAM POSITIONS

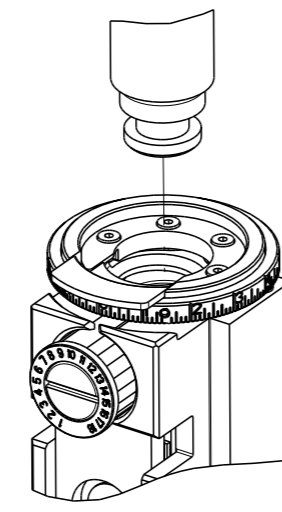


**ATLANTIC VERSION**  
 Shown on sheets 1 of 4 & 2 of 4  
 (Pacific version shown on sheets 3 of 4 & 4 of 4)

<small>THIS DRAWING IS A CONTROLLED DOCUMENT FOR TYCO ELECTRONICS CORPORATION. IT IS SUBJECT TO CHANGE AND THE CONTROL AND EXISTING DISPOSITION SHOULD BE CONTACTED FOR THE LATEST REVISION.</small>		DWN L. GROSS 14OCT2013 CHK G. BAILEY 14OCT2013 APVD M. CLIFFORD 14OCT2013	TE Connectivity Harrisburg, PA 17105-3608
DIMENSIONS: mm TOLERANCES UNLESS OTHERWISE SPECIFIED: 0 PLC ± 1 PLC ± 2 PLC ± 3 PLC ± 4 PLC ± ANGLES FINISH *		NAME Ocean End Feed Applicator SIZE CAGE CODE DRAWING NO. A1 00779 C=2150381 WEIGHT - Customer Accessible Production Drawing	RESTRICTED TO - SCALE 1:1 SHEET 2 OF 4 REV C

PART NUMBER	REVISION	DESCRIPTION	FEED TYPE
2-2150381-1	C	FINE CRIMP HEIGHT ADJUST	MECHANICAL
2-2150381-2	C	FINE CRIMP HEIGHT ADJUST	PNEUMATIC
7-2150381-7	A	CRIMP TOOLING KIT	-

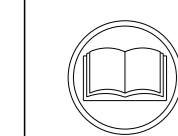
PACIFIC VERSION TERMINATOR  
INTERFACE ADAPTER



APPLICATOR DATA		
CRIMP	SIZE	TYPE
WIRE	3.05 mm [.120]	F
INSUL	3.56 mm [.140]	O
APPL INSTRUCTIONS 408-35043		

TERMINAL DATA: TE TERMINAL		TE CRIMP SPECIFICATION	
TERMINAL NAME: RING			
WIRE STRIP LENGTH 2.79-3.56 mm [.110-.140 IN]		INSULATION DIAMETER RANGE Ø1.91-2.79 mm [.075-.110 IN]	
TERMINAL APPLICATION SPECIFICATION 114-2084			
TERMINALS APPLIED			
TE TERMINAL	TE TERMINAL	TE TERMINAL	TE TERMINAL
160344-1	160344-2	41406	41406-1
42065	42721-1	63514-1	

WIRE SIZE	CRIMP HEIGHT mm [INCH]	CRIMP HEIGHT REFERENCE SETTING
16 AWG	1.63 +/- 0.05 [0.064 +/- .002]	6.3
18 AWG	1.50 +/- 0.05 [0.059 +/- .002]	7.7
20 AWG	1.45 +/- 0.05 [0.057 +/- .002]	8.2



1. RECOMMENDED SPARE PARTS
2. REFER TO SUPPLIED INSTRUCTION SHEET FOR CLEANING, LUBRICATION AND STORAGE OF APPLICATOR.
3. APPLY PART NUMBER 2-23419-6 LOCTITE TO THREADS OF ITEM 242.
4. CRIMP HEIGHT REFERENCE SETTING WAS THE SETTING USED WHEN THE APPLICATOR WAS QUALIFIED AT THE FACTORY. ADJUSTMENT MAY BE NECESSARY WHEN RUNNING APPLICATOR IN THE FIELD.
5. THE RECOMMENDED SET-UP FOR END FEED APPLICATORS IS POST-FEED WITH ITEM 2119653-1. THE APPLICATOR CAN BE CONFIGURED FOR PRE-FEED WITH ITEM 2119652-1 BUT MAY ENCOUNTER PROBLEMS WITH SOME APPLICATIONS. FEED ISSUES OR TERMINAL JAMMING MAY OCCUR IN THE PRE-FEED CONFIGURATION.
6. WIRE BARREL SEAM DOES NOT FULLY CLOSE ON 16 AWG WIRE SIZE, THEREFORE USE OF THIS WIRE SIZE IS NOT RECOMMENDED BY A.T. HOWEVER, IS APPROVED BY TERMINAL PRODUCT ENGINEER.
7. TERMINAL LUBRICANT IS RECOMMENDED.
8. UNLESS SPECIFIED OTHERWISE TORQUE VALUES SHALL BE USED PER DOCUMENT, 101-35000.

**\*WARNING**  
ON INSTALLATION, SET WIRE DISC TO CRIMP HEIGHT REFERENCE SETTING FOR LARGEST WIRE SIZE. CRIMP HEIGHT REFERENCE SETTINGS GREATER THAN THE VALUE SHOWN MAY CAUSE DAMAGE TO THE CRIMP TOOLING, REFER TO THE INSTRUCTION SHEET FOR PROPER SETUP AND ADJUSTMENTS.

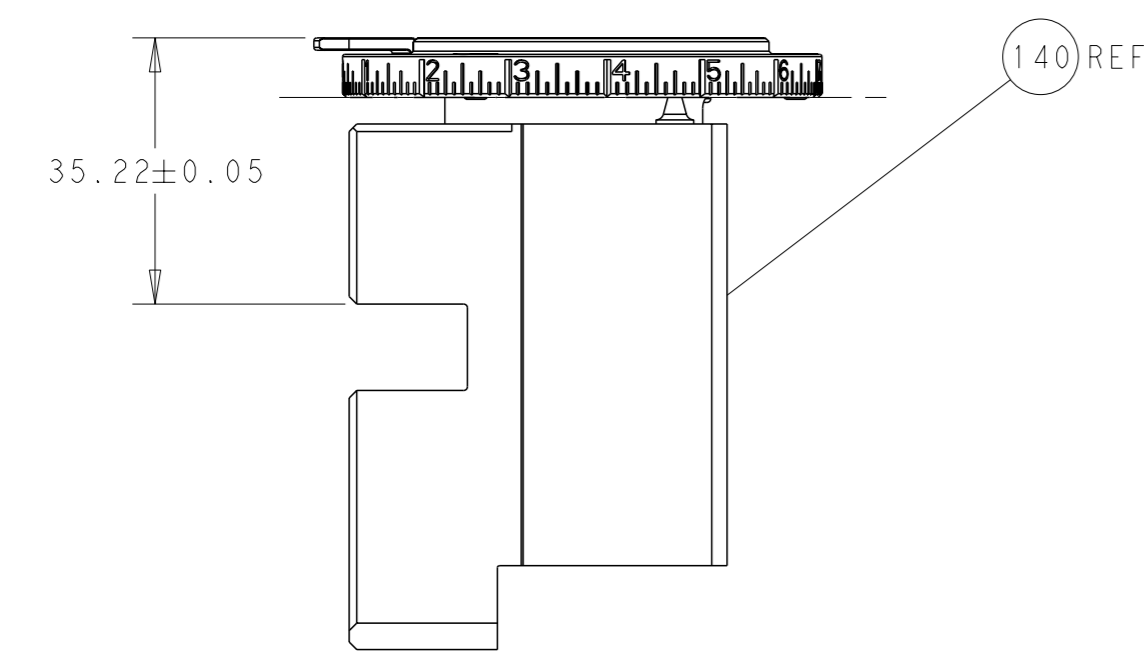
PACIFIC VERSION  
Shown on sheets 3 of 4 & 4 of 4  
(Atlantic version shown on sheets 1 of 4 & 2 of 4)

LOC	DIST	REVISIONS					
A	66	P	LY#	DESCRIPTION	DATE	OWN	APVD
		-		SEE SHEET 1		-	-

-	1	1	2119082-9	CAM, SNAIL, INSULATION ADJUSTMENT	244
-	1	1	2079764-1	WASHER, WAVE SPRING, CREST-TO-CREST	243
-	1	1	2119083-1	RETAINER, INSULATION DIAL	242
-	-	1	2119580-1	MECHANICAL FEED ASSEMBLY	239
-	1	-	2844940-3	AIR FEED MODULE	238
-	1	1	1-18028-0	WASHER, FLAT, REG M8	192
-	4	4	2079383-9	SCR, BHSC, RoHS (M6 X 20)	186
-	REFREF		994970-2	COUNTER, MAGNETIC	164
-	1	-	2119641-2	FEED CAM, AIR FEED	152
-	1	1	2168083-8	SCR, SKT HD CAP, RoHS, M4 X 16	144
-	-	1	2119653-2	FEED CAM, POST FEED	142
-	1	1	2119655-6	APPLICATOR BASIC ASSEMBLY, EF	141
-	1	1	1803518-1	RAM ASSEMBLY, EF PACIFIC	140
-	1	1	2119955-2	ASSY, LUBRICATOR, END FEED	84
-	1	1	455888-4	SPACER, CRIMPER	82
-	1	1	1803607-4	DOCUMENTATION PACKAGE	71
-	2	2	2-18032-2	SCR, SET, FLT PNT, M3 X 10.0	70
-	1	1	2119740-1	TAG, IDENTIFICATION	67
-	2	2	2168078-1	SCREW, DRIVE, RH, RoHS, 2 x .188	66
-	1	1	5-18022-5	SCR, HEX HD CAP, M4 X 6.0	59
-	-	1	2063961-1	FEED FINGER	58
-	4	4	2168400-4	SHCS, LOW HEAD, RoHS, M4 X 8	57
-	2	2	1-2168083-4	SCR, SKT HD CAP, RoHS, M4 X 5	56
-	2	2	5018030-1	NUT, HEX, REG, RoHS, M3	54
-	2	2	986965-8	NUT, LOCK, HEX, TORQUE (M4)	53
-	1	-	2063961-9	FEED FINGER	51
-	1	2	18023-9	SCR, SKT HD CAP M4 X 6.0	49
-	-	1	2119652-1	FEED CAM, PRE FEED	48
-	1	1	1803602-1	SCR, BHSC, RoHS (M8 X 25)	41
-	8	8	1-18028-2	WASHER, FLAT, REG M4	33
-	2	2	2168083-9	SCR, SKT HD CAP, RoHS, M4 X 20	31
-	2	2	2168083-2	SCR, SKT HD CAP, RoHS, M4 X 8.0	29
-	1	1	240639-1	STRIPPER (MACHINING)	27
-	2	2	1-2168083-5	SCR, SKT HD CAP, RoHS, M4 X 30	25
-	1	1	1752371-1	PLATE, STRIP GUIDE	24
-	2	2	2-22281-3	SPRING, COMPRESSION	22
-	1	1	1803292-4	DRAG	20
-	1	1	1901696-9	STRIP GUIDE, REAR	19
-	1	1	1901695-9	STRIP GUIDE, FRONT	18
-	1	1	240644-1	PLATE, REAR SHEAR	11
-	-	-	-	-	10
-	1	1	690482-1	PLATE, FRONT SHEAR	9
1	1	1	2-1333220-4	ANVIL, COMBINATION, .120	8
-	1	1	2217206-1	BLADE, SLUG	7
-	-	-	-	-	6
-	1	1	1-240641-7	SPACER	5
-	1	1	3-238011-1	BLOCK, CRIMPER SPACER	4
1	1	1	1633965-9	CRIMPER, INSULATION O PREMIUM	3
-	1	1	455888-4	SPACER, CRIMPER	2
1	1	1	456409-2	CRIMPER, WIRE .120 "F" PREMIUM	1
-	77-22-21		PART NO	DESCRIPTION	ITEM NO

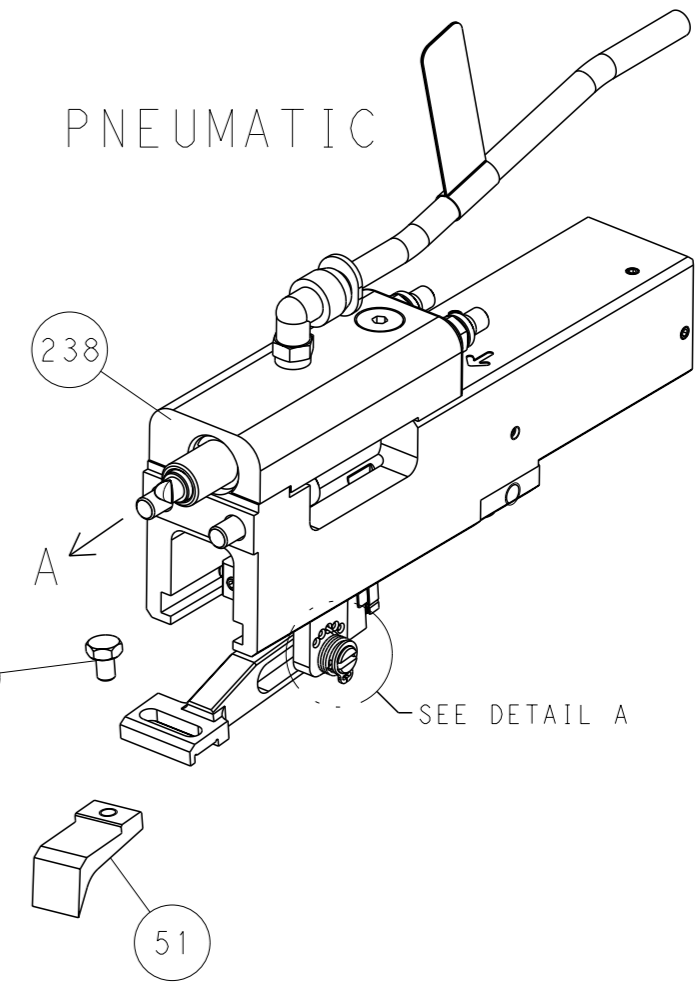
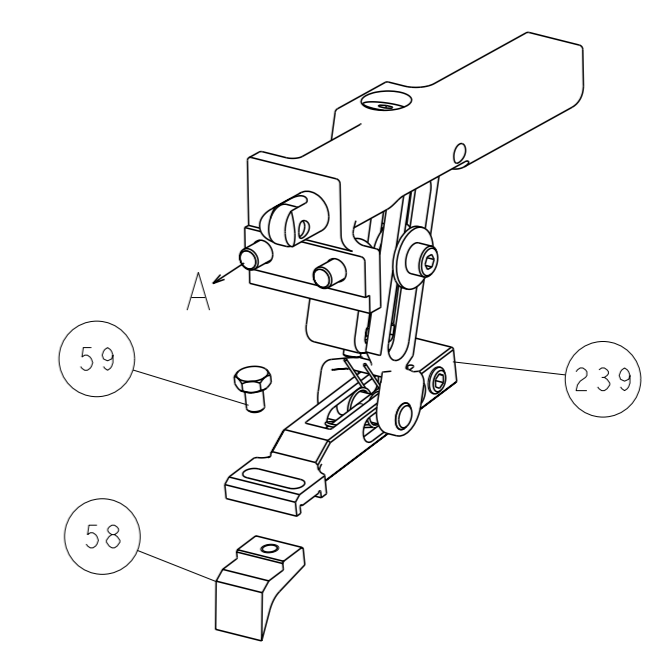
DIMENSIONS:		TOLERANCES UNLESS OTHERWISE SPECIFIED:		OWN		TE Connectivity	
mm		0 PLC ±		14OCT2013		Harrisburg, PA 17105-3608	
Ø		1 PLC ±		GROSS		NAME	
H		2 PLC ±		14OCT2013		Ocean End Feed	
L		3 PLC ±		G. BAILEY		Applicator	
R		4 PLC ±		M. CLIFFORD		-	
S		5 PLC ±		14OCT2013		SIZE	
T		6 PLC ±		PRODUCT SPEC		CAGE CODE	
Ø		7 PLC ±		APPLICATION SPEC		DRAWING NO	
H		8 PLC ±		-		RESTRICTED TO	
L		9 PLC ±		WEIGHT		SCALE	
R		10 PLC ±		-		SHEET	
S		11 PLC ±		-		3 OF 4	
T		12 PLC ±		-		REV	
Ø		13 PLC ±		-		C	
H		14 PLC ±		-		Customer Accessible Production Drawing	
L		15 PLC ±		-		SCALE 1:1	
R		16 PLC ±		-		SHEET 3 OF 4	
S		17 PLC ±		-		REV	
T		18 PLC ±		-		Customer Accessible Production Drawing	
Ø		19 PLC ±		-		SCALE 1:1	
H		20 PLC ±		-		SHEET 3 OF 4	
L		21 PLC ±		-		REV	
R		22 PLC ±		-		Customer Accessible Production Drawing	
S		23 PLC ±		-		SCALE 1:1	
T		24 PLC ±		-		SHEET 3 OF 4	
Ø		25 PLC ±		-		REV	
H		26 PLC ±		-		Customer Accessible Production Drawing	
L		27 PLC ±		-		SCALE 1:1	
R		28 PLC ±		-		SHEET 3 OF 4	
S		29 PLC ±		-		REV	
T		30 PLC ±		-		Customer Accessible Production Drawing	
Ø		31 PLC ±		-		SCALE 1:1	
H		32 PLC ±		-		SHEET 3 OF 4	
L		33 PLC ±		-		REV	
R		34 PLC ±		-		Customer Accessible Production Drawing	
S		35 PLC ±		-		SCALE 1:1	
T		36 PLC ±		-		SHEET 3 OF 4	
Ø		37 PLC ±		-		REV	
H		38 PLC ±		-		Customer Accessible Production Drawing	
L		39 PLC ±		-		SCALE 1:1	
R		40 PLC ±		-		SHEET 3 OF 4	
S		41 PLC ±		-		REV	
T		42 PLC ±		-		Customer Accessible Production Drawing	
Ø		43 PLC ±		-		SCALE 1:1	
H		44 PLC ±		-		SHEET 3 OF 4	
L		45 PLC ±		-		REV	
R		46 PLC ±		-		Customer Accessible Production Drawing	
S		47 PLC ±		-		SCALE 1:1	
T		48 PLC ±		-		SHEET 3 OF 4	
Ø		49 PLC ±		-		REV	
H		50 PLC ±		-		Customer Accessible Production Drawing	
L		51 PLC ±		-		SCALE 1:1	
R		52 PLC ±		-		SHEET 3 OF 4	
S		53 PLC ±		-		REV	
T		54 PLC ±		-		Customer Accessible Production Drawing	
Ø		55 PLC ±		-		SCALE 1:1	
H		56 PLC ±		-		SHEET 3 OF 4	
L		57 PLC ±		-		REV	
R		58 PLC ±		-		Customer Accessible Production Drawing	
S		59 PLC ±		-		SCALE 1:1	
T		60 PLC ±		-		SHEET 3 OF 4	
Ø		61 PLC ±		-		REV	
H		62 PLC ±		-		Customer Accessible Production Drawing	
L		63 PLC ±		-		SCALE 1:1	
R		64 PLC ±		-		SHEET 3 OF 4	
S		65 PLC ±		-		REV	
T		66 PLC ±		-		Customer Accessible Production Drawing	
Ø		67 PLC ±		-		SCALE 1:1	
H		68 PLC ±		-		SHEET 3 OF 4	
L		69 PLC ±		-		REV	
R		70 PLC ±		-		Customer Accessible Production Drawing	
S		71 PLC ±		-		SCALE 1:1	
T		72 PLC ±		-		SHEET 3 OF 4	
Ø		73 PLC ±		-		REV	
H		74 PLC ±		-		Customer Accessible Production Drawing	
L		75 PLC ±		-		SCALE 1:1	
R		76 PLC ±		-		SHEET 3 OF 4	
S		77 PLC ±		-		REV	
T		78 PLC ±		-		Customer Accessible Production Drawing	
Ø		79 PLC ±		-		SCALE 1:1	
H		80 PLC ±		-		SHEET 3 OF 4	
L		81 PLC ±		-		REV	
R		82 PLC ±		-		Customer Accessible Production Drawing	
S		83 PLC ±		-		SCALE 1:1	
T		84 PLC ±		-		SHEET 3 OF 4	
Ø		85 PLC ±		-		REV	
H		86 PLC ±		-		Customer Accessible Production Drawing	
L		87 PLC ±		-		SCALE 1:1	
R		88 PLC ±		-		SHEET 3 OF 4	
S		89 PLC ±		-		REV	
T		90 PLC ±		-		Customer Accessible Production Drawing	
Ø		91 PLC ±		-		SCALE 1:1	
H		92 PLC ±		-		SHEET 3 OF 4	
L		93 PLC ±		-		REV	
R		94 PLC ±		-		Customer Accessible Production Drawing	
S		95 PLC ±		-		SCALE 1:1	
T		96 PLC ±		-		SHEET 3 OF 4	
Ø		97 PLC ±		-		REV	
H		98 PLC ±		-		Customer Accessible Production Drawing	
L		99 PLC ±		-		SCALE 1:1	
R		100 PLC ±		-		SHEET 3 OF 4	

LOC	DIST	REVISIONS				
A	66	REV	DESCRIPTION	DATE	OWN	APVD
		-	SEE SHEET 1	-	-	-

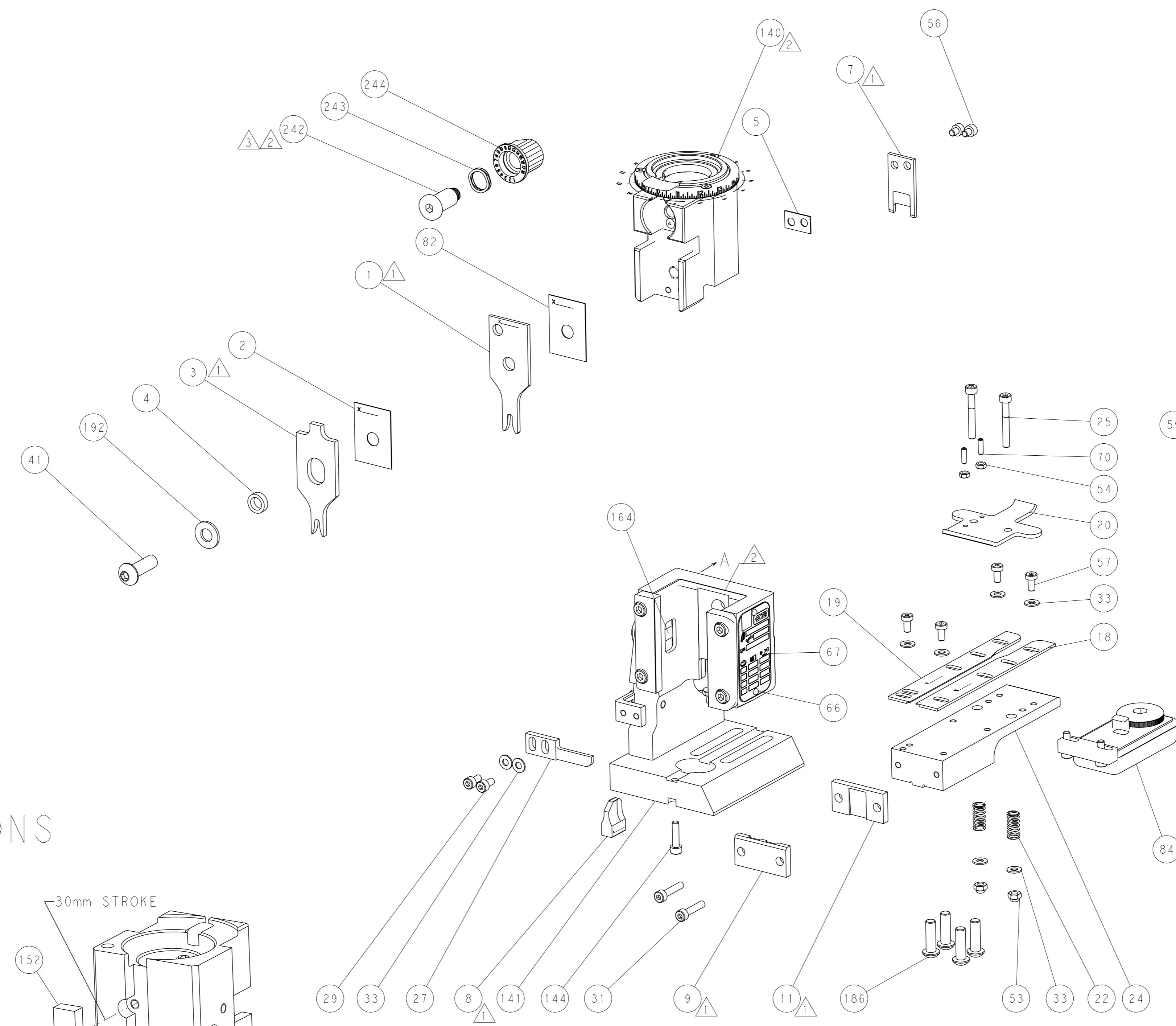
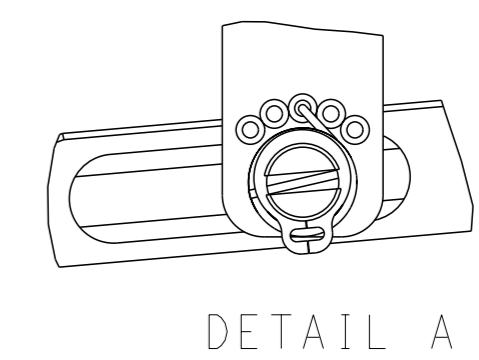


RAM SET-UP

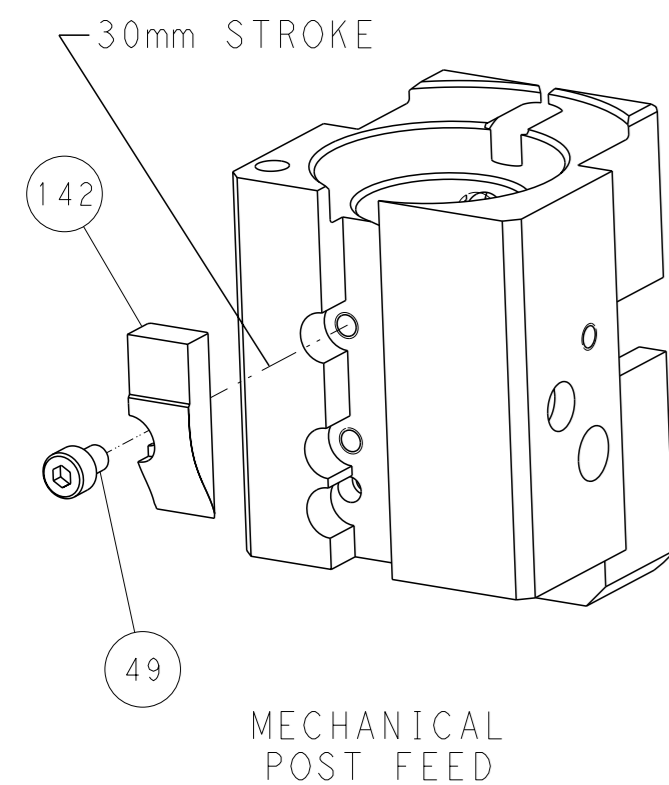
# FEED TYPE MECHANICAL



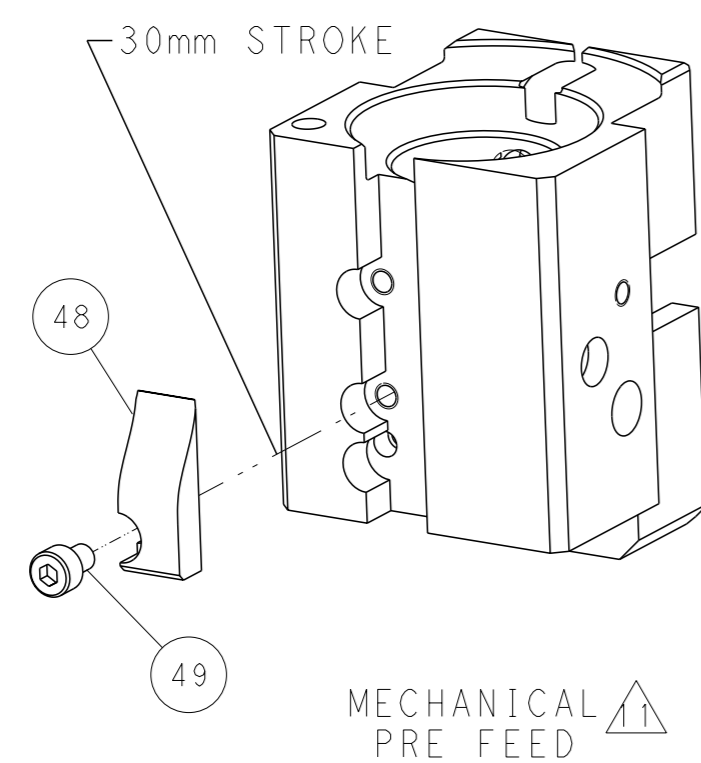
# FEED SPRING SETTING POSITION



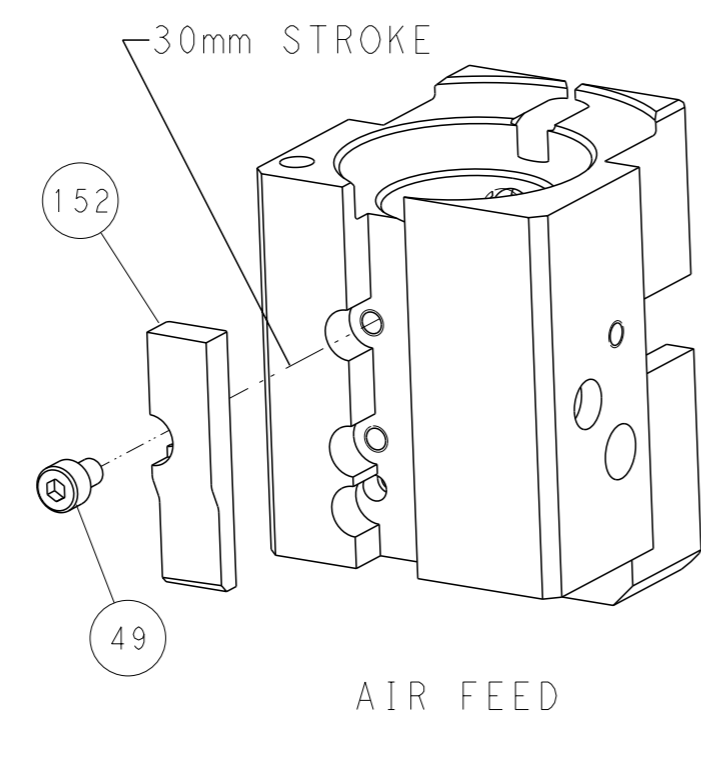
# CAM POSITIONS



MECHANICAL  
POST FEED



MECHANICAL  
PRE FEED



AIR FEED

**PACIFIC VERSION**  
 Shown on sheets 3 of 4 & 4 of 4  
 (Atlantic version shown on sheets 1 of 4 & 2 of 4)

<small>THIS DRAWING IS UNPUBLISHED. RELEASED FOR PUBLICATION 20. COPYRIGHT 20 BY TYCO ELECTRONICS CORPORATION. ALL RIGHTS RESERVED.</small>		DWN: L. GROSS CHK: G. BAILEY APVD: M. CLIFFORD	14OCT2013 14OCT2013 14OCT2013	NAME: Ocean End Feed Applicator SIZE: A1 SCALE: 1:1	RESTRICTED TO: C
DIMENSIONS: mm TOLERANCES UNLESS OTHERWISE SPECIFIED: 0 PLC ± 1 PLC ± 2 PLC ± 3 PLC ± 4 PLC ± ANGLES FINISH ±		WEIGHT: - Customer Accessible Production Drawing	SHEET 4 OF 4	SHEETS 1 & 2 ARE NOT REQUIRED FOR PACIFIC VERSION	