

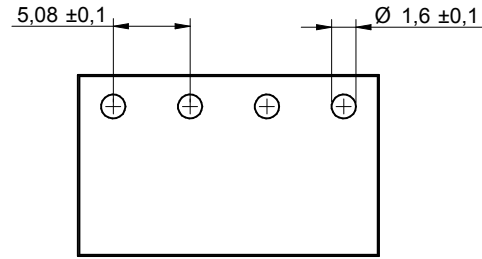
1

2

3

4

5



RECOMMENDED PCB LAYOUT - COMPONENT VIEW

## CHARACTERISTICS

## MATERIAL

Insulator material : LCP

Flammability rating : UL94-V0

Colour : Black

Contact pin : Brass (CuZn)

Surface of solder tail plating : Tin Plated

## ENVIRONMENTAL

Operating temperature : -40°C up to 105°C

Compliance : Lead free and RoHS

## SOLDERING

Solder temperature : Reflow process as per JEDEC J-020D-STD

## ELECTRICAL

Current rating : 10A

Working voltage : 300 Vac

Dielectric withstanding voltage : 4 kVac/min

Contact resistance : 20 mΩ max

## STANDARD

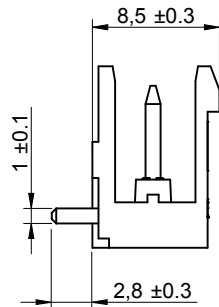
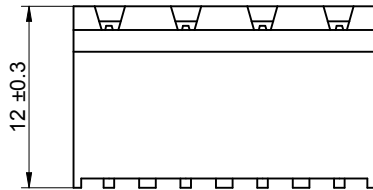
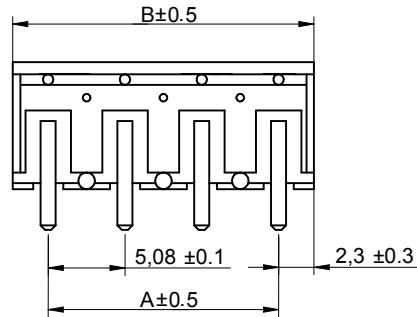
c  us Certified : E315414 / Model number 7015

## MECHANICAL

Pitch : 5.08mm


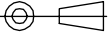

## PACKAGING

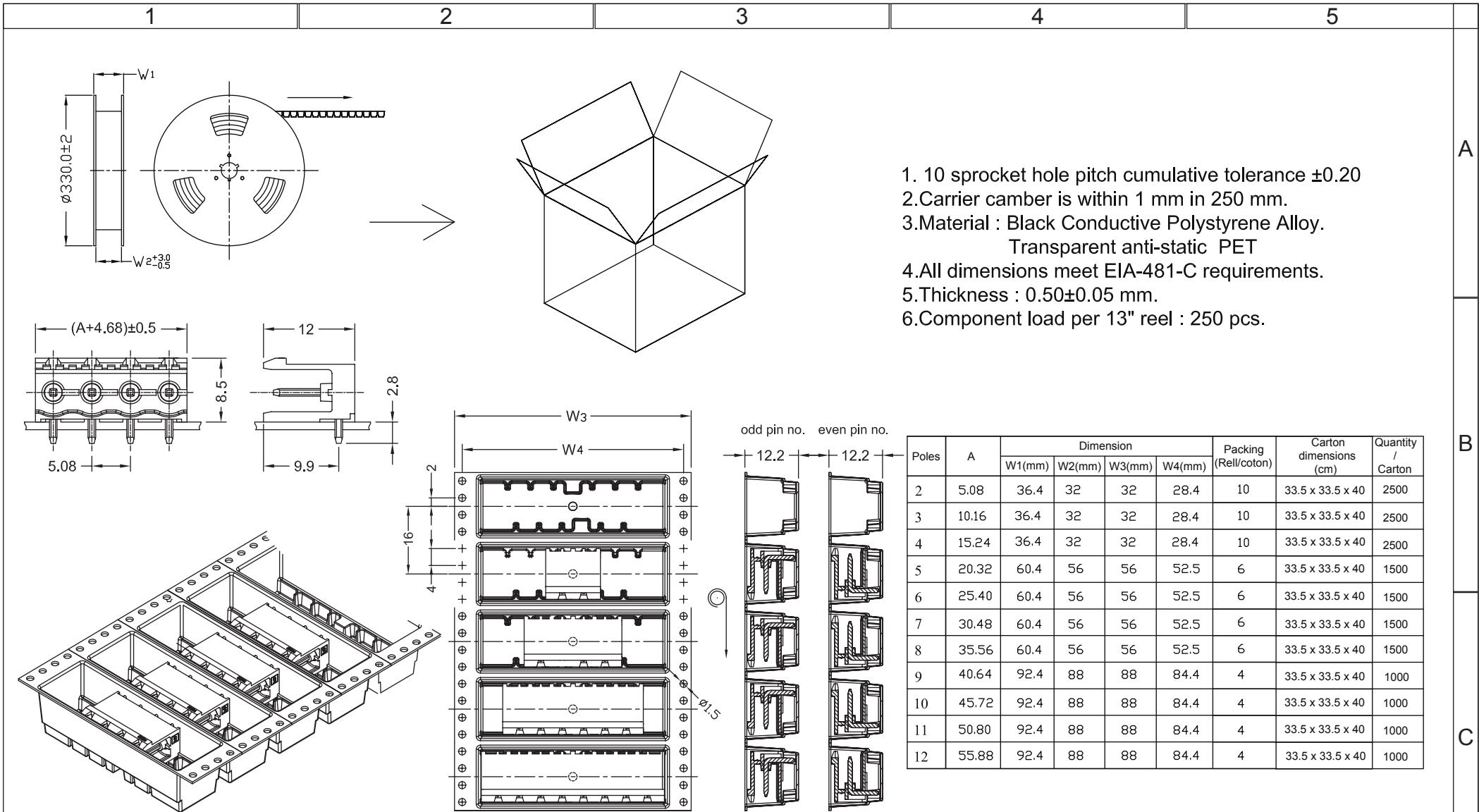
Tape &amp; Reel



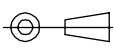
Poles	A	B
2	5.08	9.76
3	10.16	14.84
4	15.24	19.92
5	20.32	25
6	25.4	30.08
7	30.48	35.16
8	35.56	40.24
9	40.64	45.32
10	45.72	50.4
11	50.8	55.48
12	55.88	60.56

RoHS Compliant


REV	DATE	FILE	BY	PROJECTION:	GENERAL TOLERANCE		DESCRIPTION: SERIE 7015B - 5.08MM OPEN HORIZONTAL PCB HEADER - THR TYPE	SIZE		
G					.X = +/_ 0.2 .XX = +/_ 0.15					WERI PART NO: 691 701 530 0xx B
F										
E										
D	14-OCT-13	PIN DIMENSION	QL			APPROVAL: RJ	UNIT: MM			
C	29-JUL-13	DWG REVIEW	QL				SCALE: 2/1			
B	19-DEC-11	6917015300xx	QL		SHEET: 1/2					
A	14-SEP-11	PDF	QL		DRAW: QUENTIN					



RoHS Compliant			
G			
F			
E			
D			
C			
B			
A			
REV	DATE	FILE	BY

PROJECTION:  
  
 APPROVAL: RJ

GENERAL TOLERANCE  
 .X =  $\pm 0.2$   
 .XX =  $\pm 0.15$   
 UNIT: MM  
 SCALE:  
 SHEET: 2/2  
 DRAW: QUENTIN



DESCRIPTION: SERIE 7015B - 5.08MM OPEN HORIZONTAL PCB HEADER - THR TYPE  
 WERI PART NO: 691 701 530 0xx B

SIZE  
**A4**