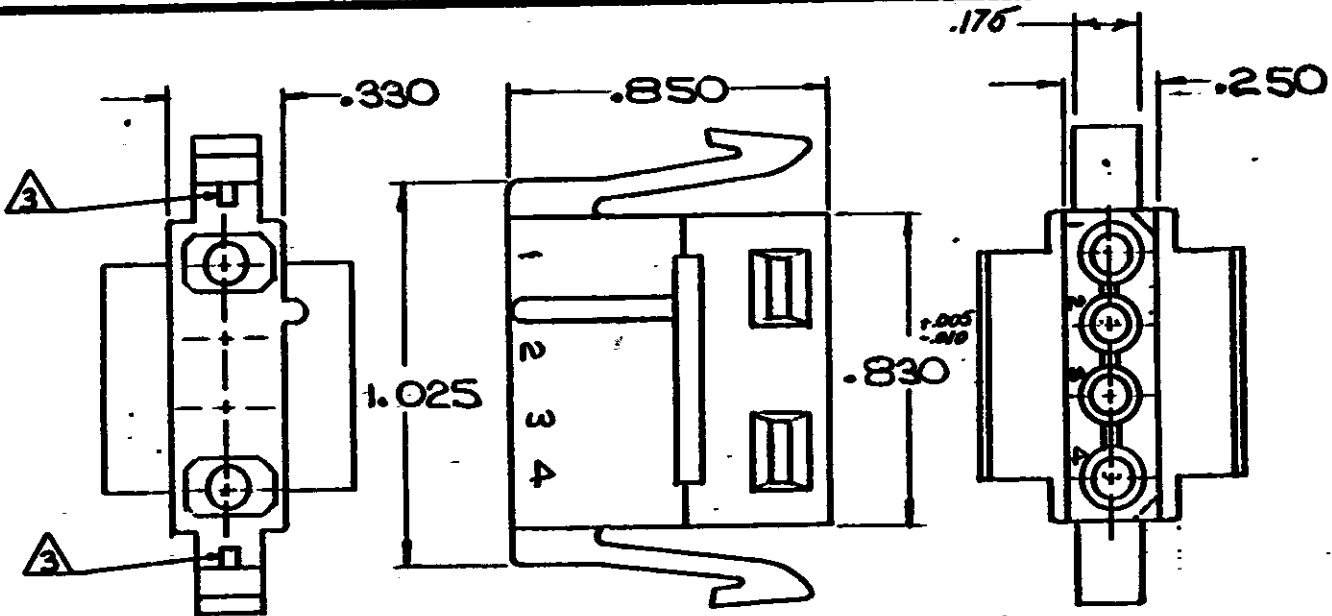


DRAWING MADE IN AMERICAN PROJECTION

SHEET 1 OF 2
NUMBER 480727

209



- 1. MATES WITH CAP 480728
- 2. TO BE USED WITH MATE-N-LOK DUAL LANCE SOCKETS.
- 3. OPTIONAL CONSTRUCTION

HOUSING	MATERIAL	COLOR
I-480727-0	NYLON	NATURAL

DIMENSIONS IN INCHES. DO NOT SCALE PRINT.

Copyright © 1973 by AMP Incorporated. All rights reserved. AMP products covered by patents and/or patents pending.

CUSTOMER COPY REFERENCE ONLY

©1973 BY AMP INCORPORATED. ALL RIGHTS RESERVED. AMP PRODUCTS COVERED BY PATENTS AND/OR PATENTS PENDING.

MATERIAL AND FINISH
SEE TABLE



AMP INCORPORATED
HARRISBURG, PENNSA.

CLASS .084 SOCKET HOUSING

F	REV PER CM 2277	TB	RS	426
E	REV PER CM-620			
TR	REVISION RECORD	ECN	NO	DATE

WIRE — RANGE — INSULATION
TYPE
TOLERANCE EXCEPT AS NOTED ± .010
SCALE NTS
LOC: CM A

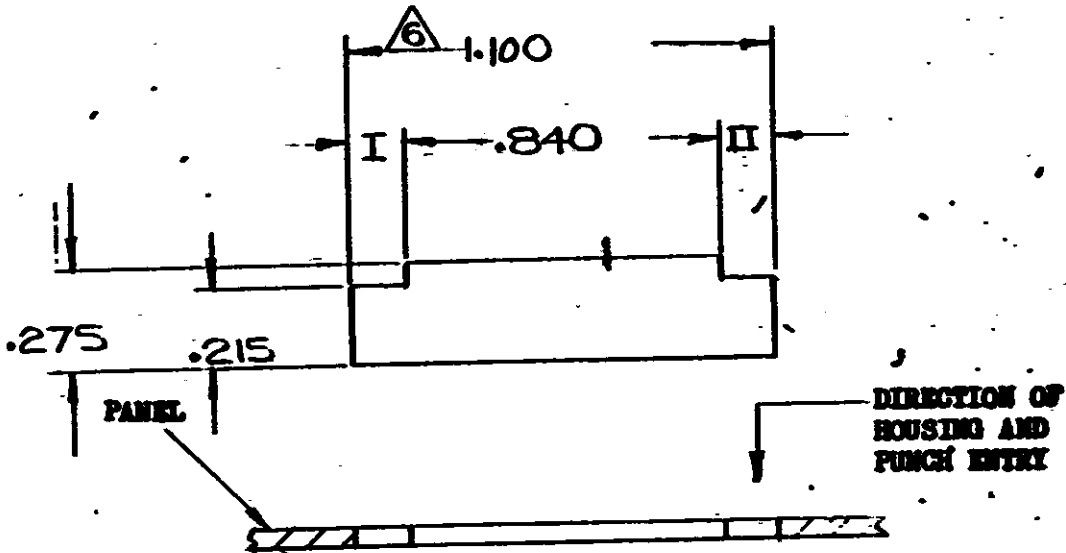
TYPE PANEL MOUNT
NO. SHEET 1 OF 2
REV F

DR: *[Signature]*
CHK: *[Signature]*
DATE: 3-21-73

NAME: 4 CIRCUIT MATE-N-LOK PLUG DUAL LANCE HOUSING

NUMBER 480727

.015 R MAX
ALL CORNERS



- NOTE:**
1. Recommended panel thickness .025 - .065.
 2. Both locking legs to be squeezed together and housing to be inserted straight-in, as opposed to a rocking manner of insertion.
 3. The panel must be punched so that the housing enters the panel in the same direction as the punch.
 4. Dimensions I and II to be equal within .005.
 5. Panel must not have any material (paint, porcelain, etc.) applied in the mounting hole area that would decrease retention of the housing in the panel.
- △ 6. If Notes 3 and/or 5 are not complied with, the 1.100 dimension should be reduced to .080 to assure proper housing retention in the panel.

PRINT DIST DIMENSIONS IN INCHES. DO NOT SCALE PRINT

© 1975 BY AMP INCORPORATED. ALL RIGHTS RESERVED. AMP PRODUCTS COVERED BY PATENTS AND/OR PATENTS PENDING

CUSTOMER COPY REFERENCE ONLY

MATERIAL AND FINISH
11



AMP INCORPORATED
HARRISBURG, PENNA.

WIRE RANGE INSULATION
11

CLASS *11*

TOLERANCE EXCEPT AS NOTED
± .005 ± .010

TYPE *11*

LTR REVISION RECORD etn op DATE

LOC CM A NO SHEET 2 OF 2
480727

REV F

DR *1/1/75*
CHK *EM*

NAME **RECOMMENDED MOUNTING INFORMATION**
4 CIRCUIT MATE-N-LOK PANEL MOUNT FLUG