

M2M RTU Center

User Manual

Warranty

All products manufactured by ICP DAS are warranted against defective materials for a period of one year from the date of delivery to the original purchaser.

Warning

ICP DAS assumes no liability for damages consequent to the use of this product. ICP DAS reserves the right to change this manual at any time without notice. The information furnished by ICP DAS is believed to be accurate and reliable. However, no responsibility is assumed by ICP DAS for its use, or for any infringements of patents or other rights of third parties resulting from its use.

Copyright

Copyright 2010 by ICP DAS Co., LTD. All rights reserved worldwide.

Trademark

The names used for identification only may be registered trademarks of their respective companies.

Tables of Content

Chapter 1 Introduction	3
Chapter 2 Hardware Requirement.....	4
2.1 Software architecture.....	4
2.2 Application architecture.....	5
2.3 System requirement.....	6
Chapter 3 Installing .NET Compact Framework	8
Chapter 4 RTU Center operation.....	11
4.1 Main menu.....	11
4.2 NEW Device	14
4.3 Delete Device	15
4.4 Modify IP.....	15
4.5 Modify Port	16
4.6 Control module IO.....	17
4.7 Modify the module parameters	19

Chapter 1 Introduction

The M2M RTU Center provided by ICP DAS is a M2M (Machine to Machine) management software that has a strong core technology for handling data and lets the user save the trouble of dealing with large IO data. The RTU Center supports the G-4500 RTU, GT-540 and other RTU products in ICP DAS that allow users to manage these RTU devices remotely. It can monitor the local IO data, local GPS data and IO data of Modbus RTU modules. With M2M RTU Center software, users can establish the remote system by the OPC Client of user's SCADA software with our NAPOPC DA Server or EZ Data logger software of ICP DAS. That provides an easy way to complete user's project.

NAPOPC.M2M OPC Server is a free OPC DA Server (The "OPC" stands for "OLE for Process Control" and the "DA" stands for "Data Access") provided by ICP DAS. EZ Data Logger is small data logger software. It can be applied to small remote I/O system. With its user-friendly interface, users can quickly and easily build a data logger software without any programming skill.

The M2M RTU Center with G-4500 RTU or GT-540 applications can be divided into 2 parts: One part is the fixed intelligent remote management equipment such as water monitor system, vending machine system, remote machine monitor, home security, POS system, power measurement system and etc. Another kind of application is movement management equipment such as vehicle management system, maritime system, taxi dispatch system, and etc. Anyway, the M2M RTU Center can save the cost and development time for users.

Features:

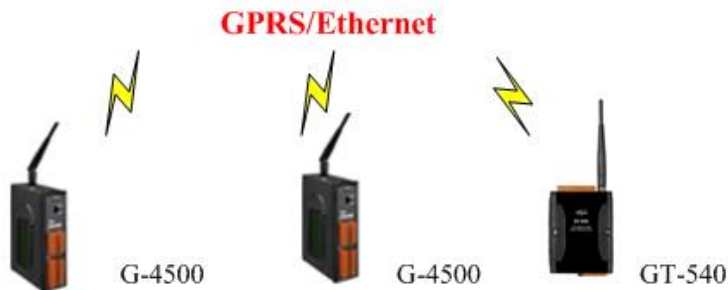
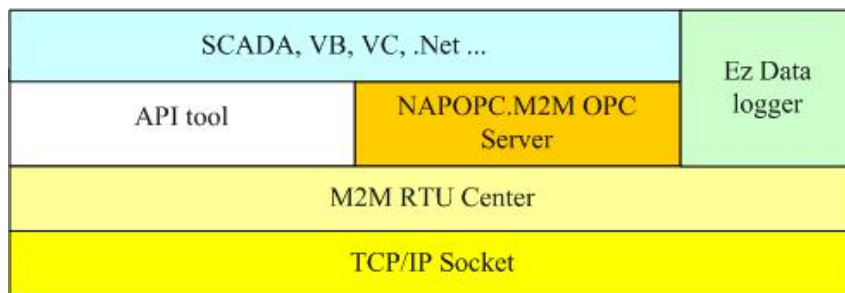
- RTU series Management tool
- Up to 128 GPRS RTU devices can be managed in one RTU Center software
- Help users to connect to any Modbus device to GPRS/Ethernet by RTU devices
- Easy and quick to build a Remote monitor system
- Windows-based software
- Support NAPOPC.M2M server, EzDatalog and M2M API tool of ICP DAS

Chapter 2 Hardware Requirement

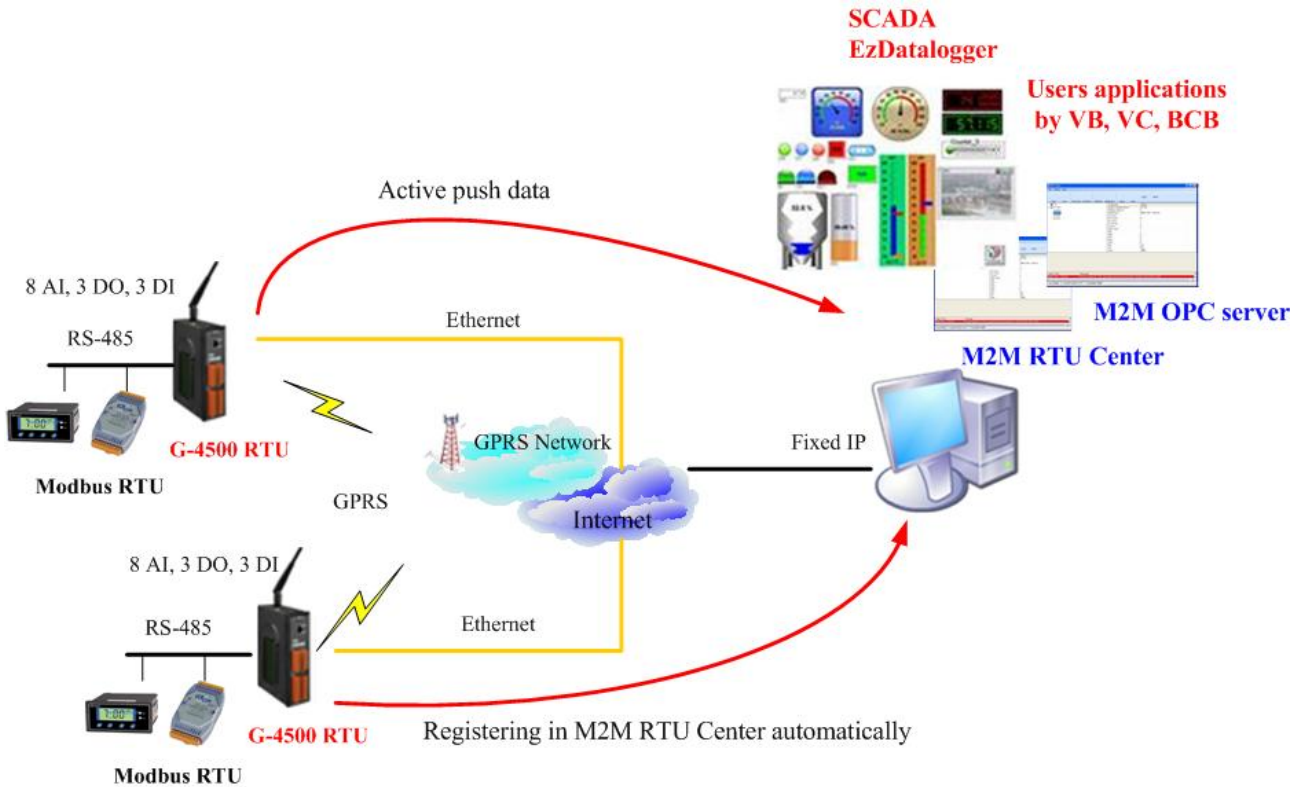
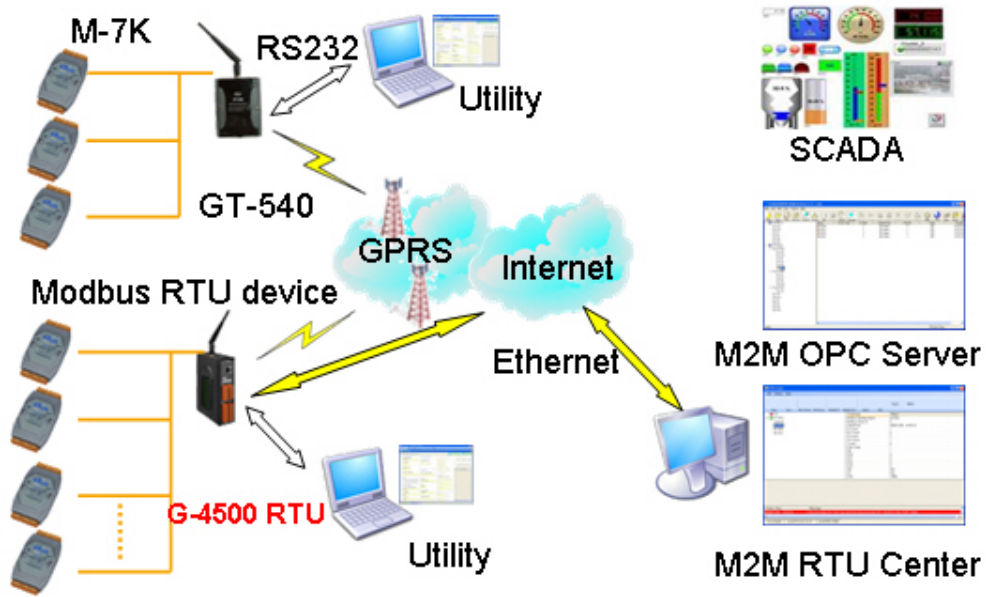
2.1 Software architecture

When users want to use the following software or others to their system with RTU products of ICP DAS, M2M RTU Center must be executed at the same time.

Device	Description
NAPOPC.M2M	OPC server
EZ Data Logger software	Version 4.24 or higher
.NET Framework software	Version 2.0 or higher



2.2 Application architecture



2.3 System requirement

- Software requirement:

Operating system Version	Support
Windows 2000	✓
Windows XP	✓
Windows 7	✓

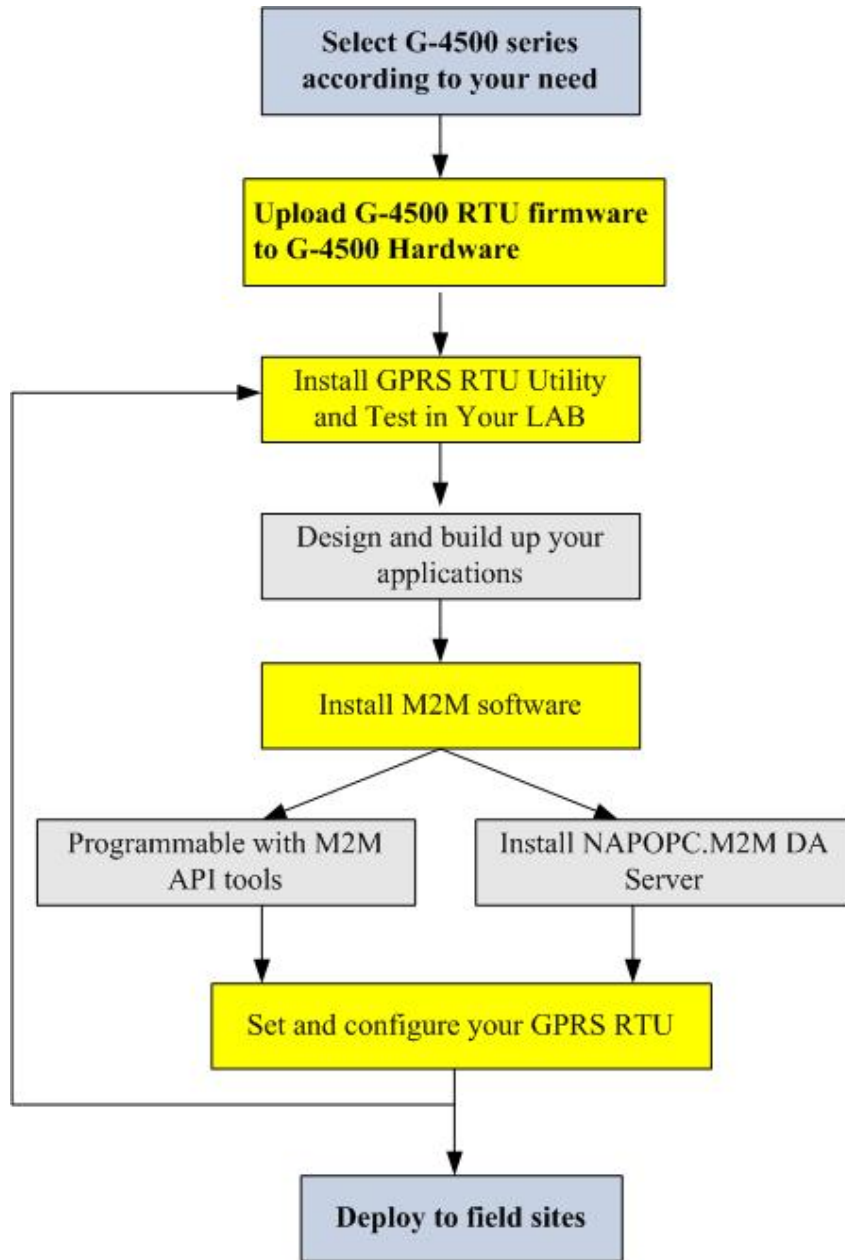
- Hardware requirement:

Hardware Items	Requirement
CPU	1.0 GHz or higher
Memory	512 MB or higher
Hardware space	100 MB or higher
Other	CD-ROM or DVD-ROM

Support Hardware

Product Type	Description
G-4500 RTU	Intelligent GPRS Remote Terminal Unit
GT-540	Smart GPRS Remote Terminal Unit

Flowchart for using RTU devices



Chapter 3 Installing .NET Compact Framework

It needs the runtime environment with .NET Framework 2.0 or above to execute the M2M RTU Center in the PC. If there has .NET Framework 2.0 or above in the PC, the section 3.1 can be omitted.

- ◆ Microsoft .Net Framework Version 2.0:

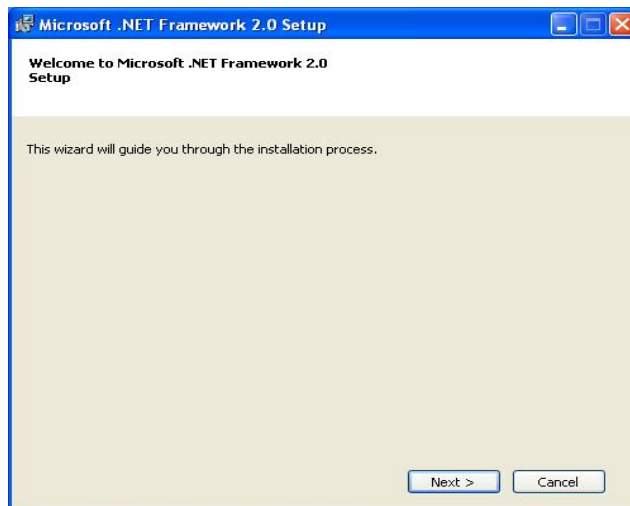
<http://www.microsoft.com/downloads/details.aspx?FamilyID=0856eacb-4362-4b0d-8edd-aab15c5e04f5&DisplayLang=en>

- ◆ Microsoft .Net Framework Version 3.5:

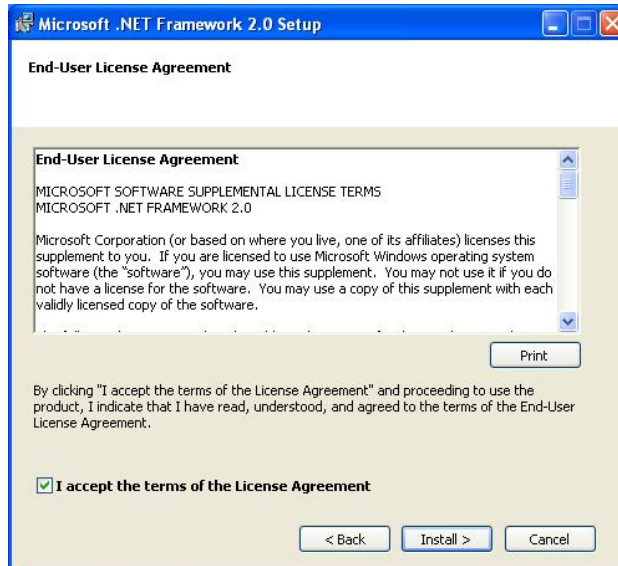
<http://www.microsoft.com/downloads/details.aspx?familyid=333325FD-AE52-4E35-B531-508D977D32A6&displaylang=en>

The install figure is as follows:

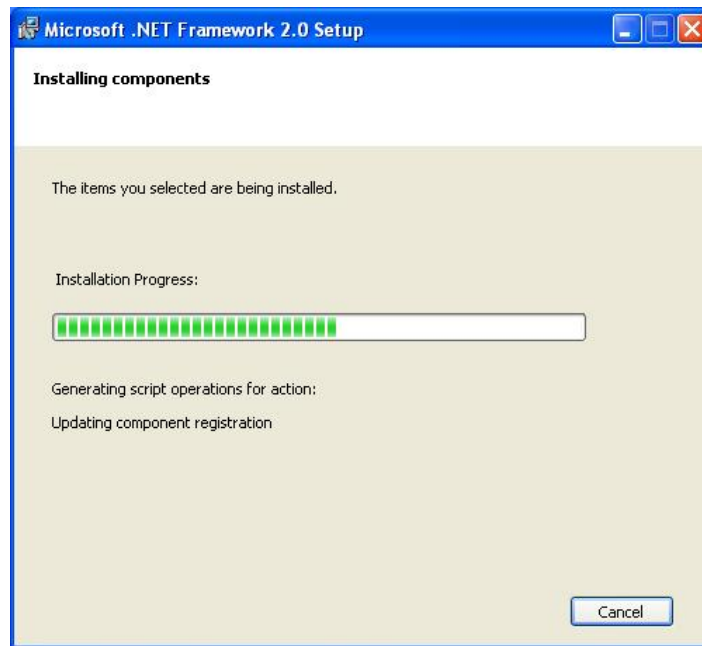
- ◆ Press “Next” to the next step.



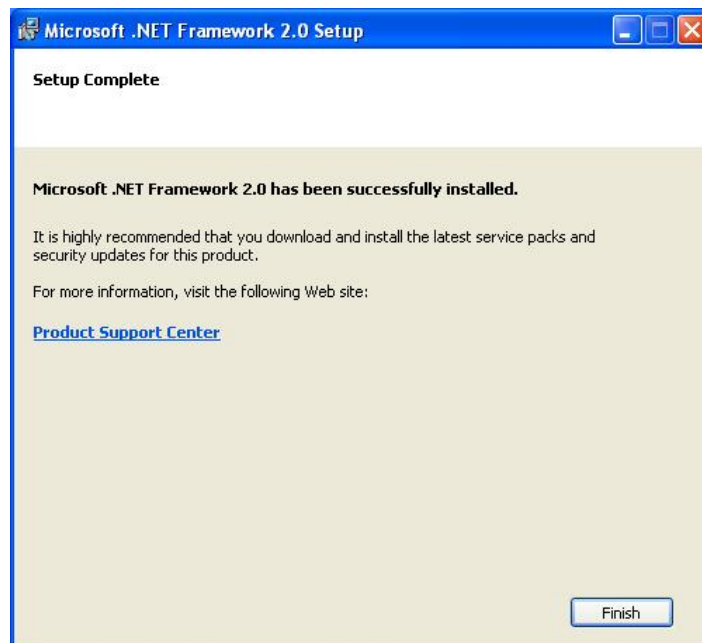
- ◆ Select the “I accept the terms of the License Agreement” and “Install” to the next step.



- ◆ The installation process would be going



- ◆ After finishing the installation, press "Finish" to exit the program.

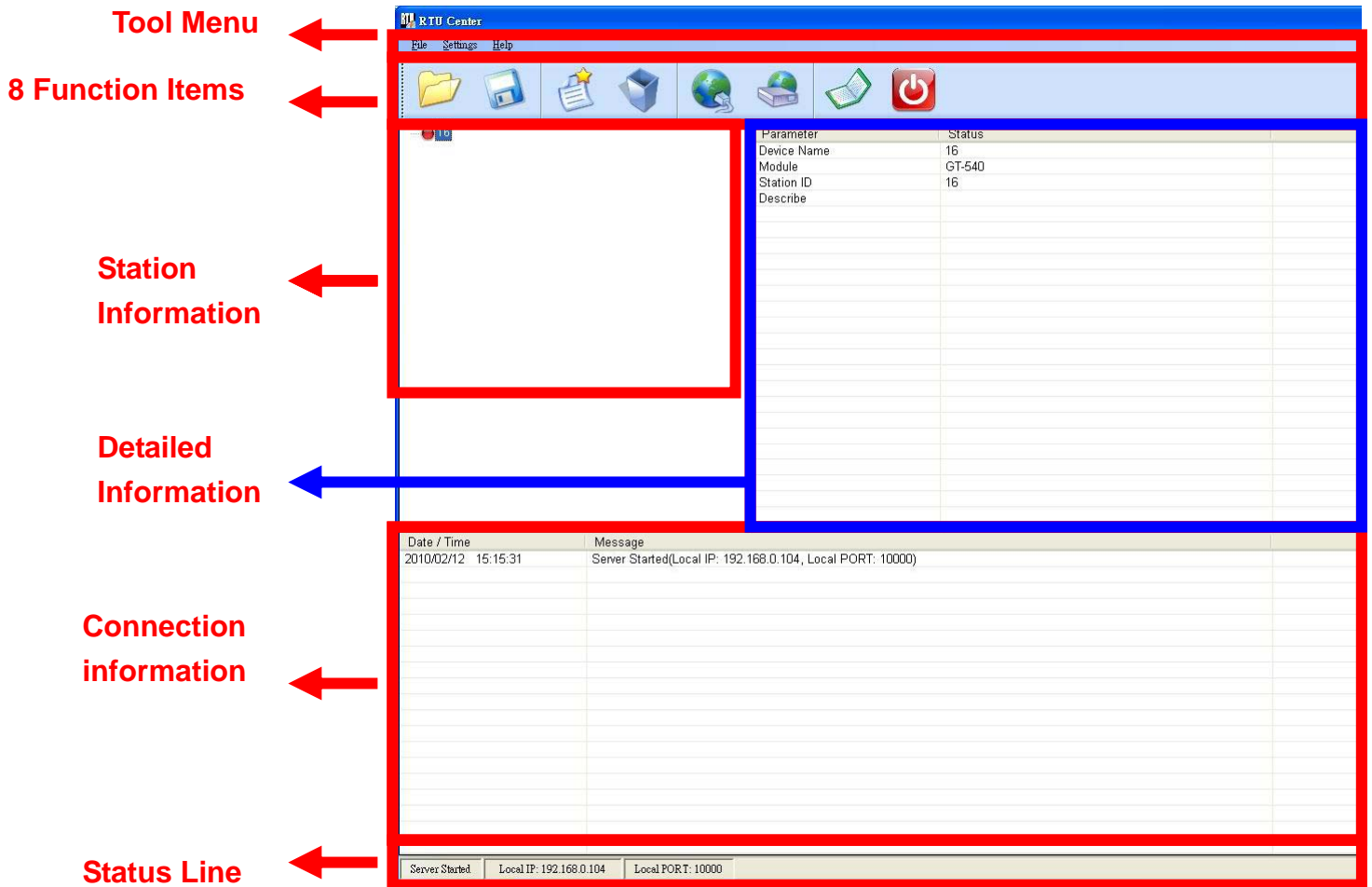


Chapter 4 RTU Center operation

OPC Server: Launch M2M RTU Center from the start menu "Start→All Programs→ICPDAS→ ICP DAS OPC Suite→ NAPOPC.M2M→ M2M_RTU_Center".

4.1 Main menu

The main menu of RTU Center includes the following sections:



Tool menu:

- ◆ File: Save or open station information of the user.
- ◆ Settings: Modify the local IP or local Port.
- ◆ Help: Describe the version of RTU Center and other information.

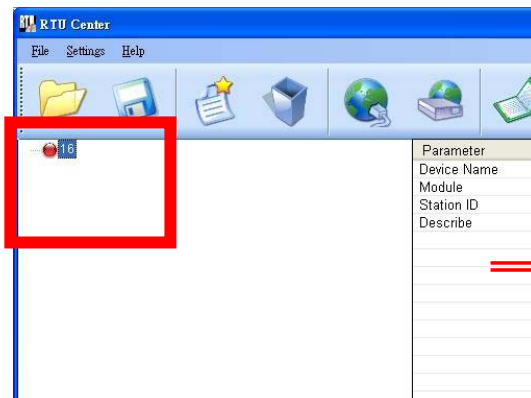
8 function items:

- ◆ Open file: Open the station information of the user.
- ◆ Save file: Save the station information of the user.
- ◆ New Device: Add a new device.

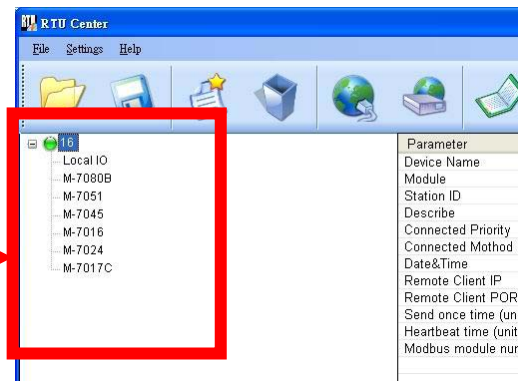
- ◆ Delete Device: Delete the assigned device.
- ◆ Modify IP: Modify the local IP
- ◆ Modify Port: Modify the local Port
- ◆ About: The version of RTU Center and other information.
- ◆ Exit: Exit the RTU Center.

Station Information

Manage total stations interface. It will turn green light from red light when the station connect to RTU Center successfully.



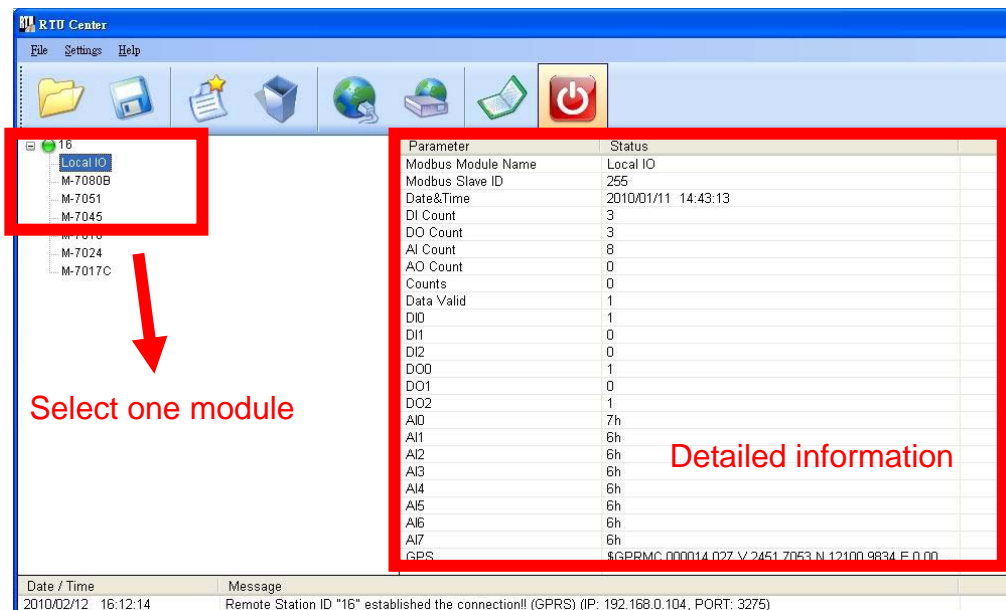
Before connection



It shows information of the station after connection successfully

Detailed Information

It shows the detailed information when you select one module



Select one module

Detailed information

Connection Information

Total stations connect to RTU Center information.

Status Line

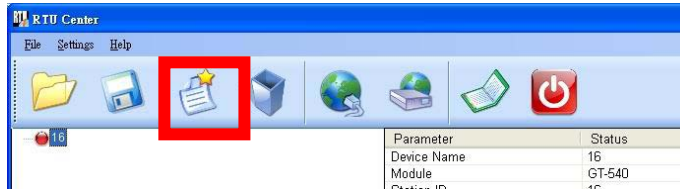
Show the related information during the operation procedure including:

- ◆ The status of Server of PC
- ◆ The local IP of PC
- ◆ The local Port of PC

4.2 NEW Device

It adds a new device. The description is below:

- (1) Choose Function Item > New Device.



- (2) Device Properties

Device Name:

Module Setting

Module:

Station ID: (1 ~ 65535)

Describe:

OK

Cancel

Text field:

- <1> Device Name: Input your Device name
- <2> Module: Select your connection module like G-4500 or GT-540...etc.
- <3> Station ID: Input the station ID. It can't repeat the same station ID in the RTU Center. The station ID must match your connection module. (Range: 1 ~ 65535)
- <4> Describe: It shows in field of "Detailed Information"

Operation:

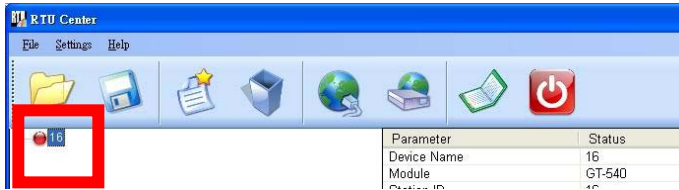
- <1> OK: Exit the window and add a new device
- <2> Cancel: Exit the window and don't add

- (3) It will add to "Station Information" after press the "OK" button

4.3 Delete Device

It deletes a device. The description is below:

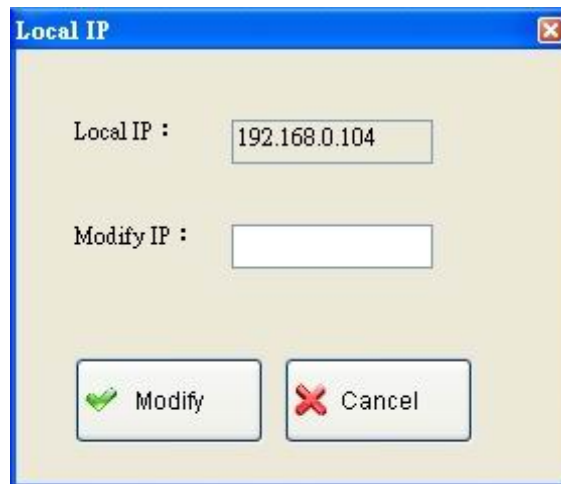
- (1) Select the device that you want to delete.



- (2) Choose Function Item > Delete Device.



4.4 Modify IP



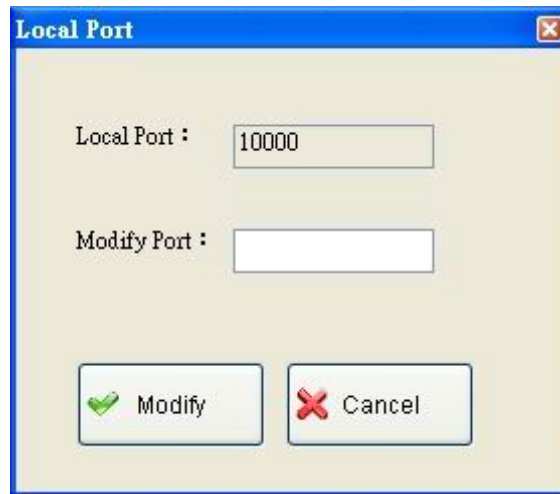
Text field:

- <1> Local IP: Show your old IP address
- <2> Modify IP: Show your new IP address

Operation:

- <1> Modify: Exit the Modify IP window and modify the IP address
- <2> Cancel: Exit the Modify IP window and don't save

4.5 Modify Port



Text field:

<1> Local Port: Show your old Port address.

<2> Modify Port: Show your new Port address.

Operation:

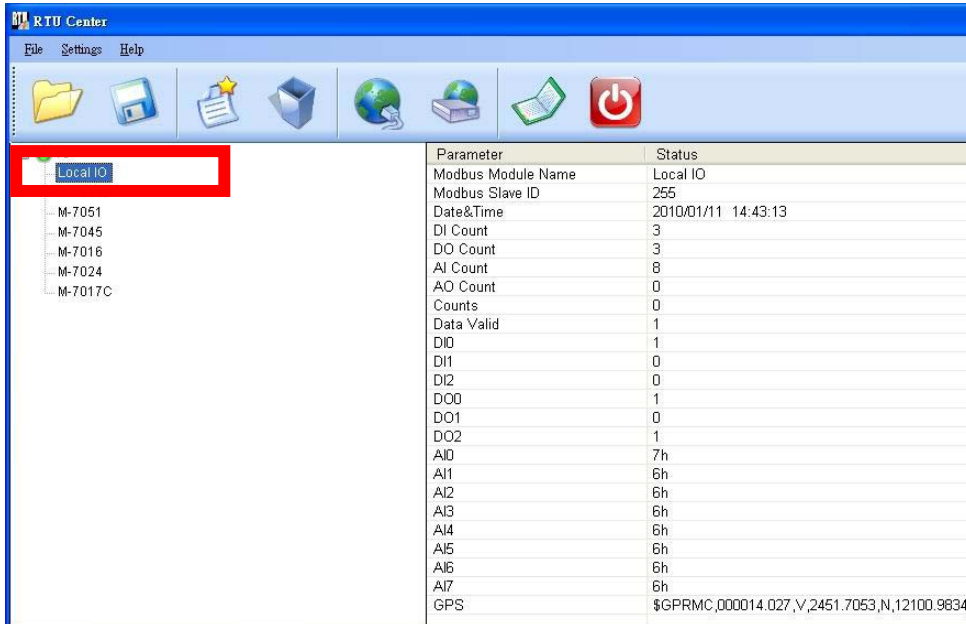
<1> Modify: Exit the Modify Port window and modify the Port address.

<2> Cancel: Exit the Modify Port window and don't save.

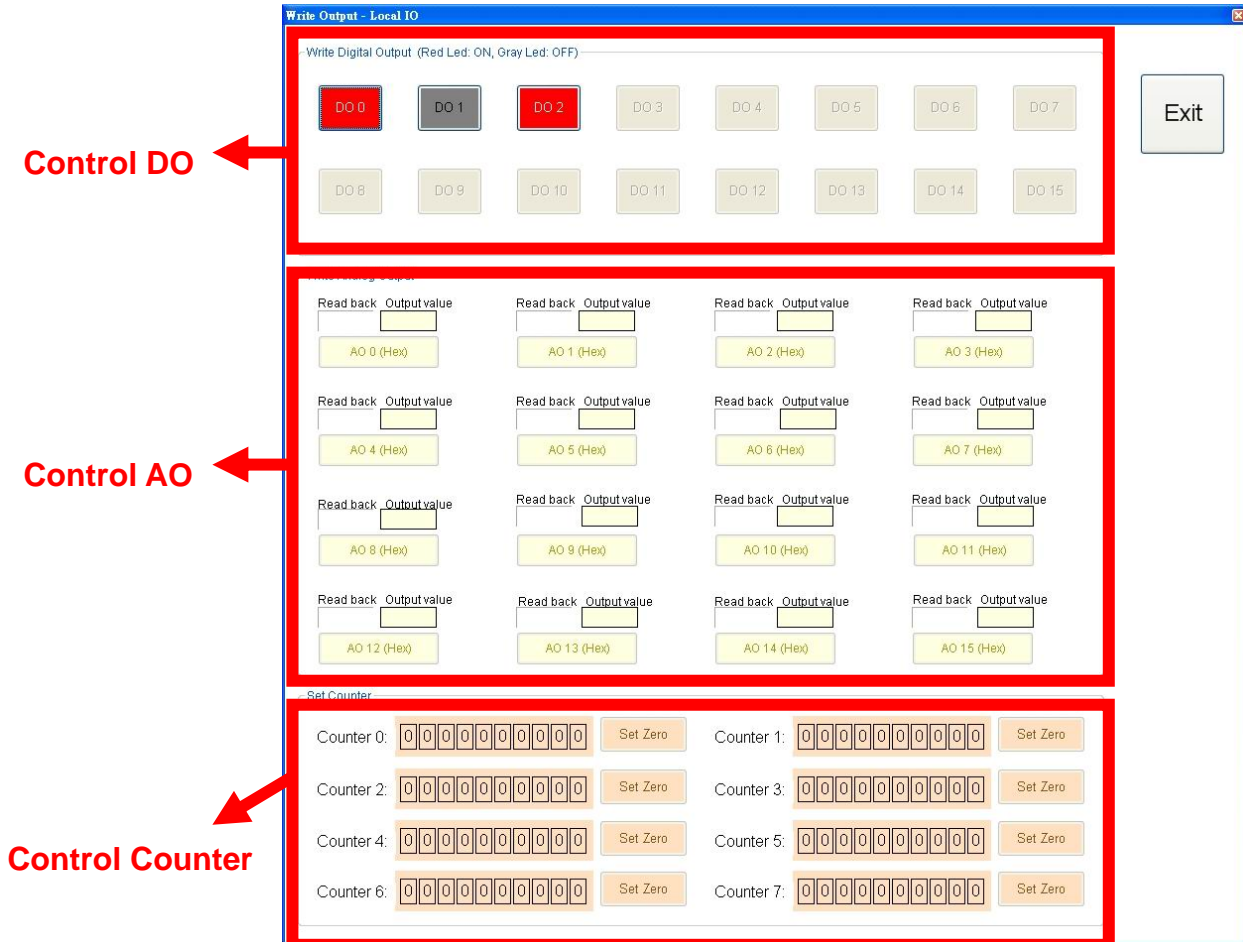
4.6 Control module I/O

It controls an IO of module. The description is below:

- (1) Double-click the module that you want to control, like Local IO or M-7000 module.



- (2) Operation DO



Control DO: If your module had DO counts, you can control them.

Text field

<1> DO0 ~ DO15 :

- ✧ Red: the voltage logic is high
- ✧ Gray: the voltage logic is low
- ✧ Disable: your module doesn't have this DO count.

Operation

<1> DO0 ~ DO15 Gray : Set the DO output on

<2> DO0 ~ DO15 Red : Set the DO output off

Control AO: If your module had AO counts, you can control them.

Text field

<1> Read back AO0 ~ AO15: Get the AO value.

<2> Output Value AO0 ~ AO15: Want to set the AO value.

Operation

<1> AO0 ~ AO15 : Set the AO value

Control Counter: If your module had Counter counts, you can control them.

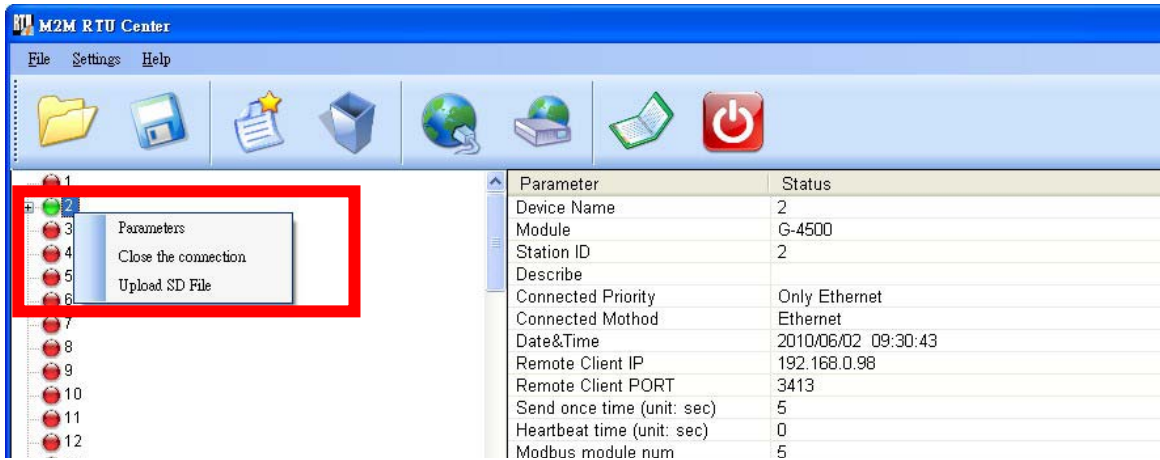
Text field

<1> Counter0 ~ Counter7: Get the Counter value.

Operation

<1> Set Zero Coutner0 ~ Set Zero Coutner 7 : Set the counter value to zero

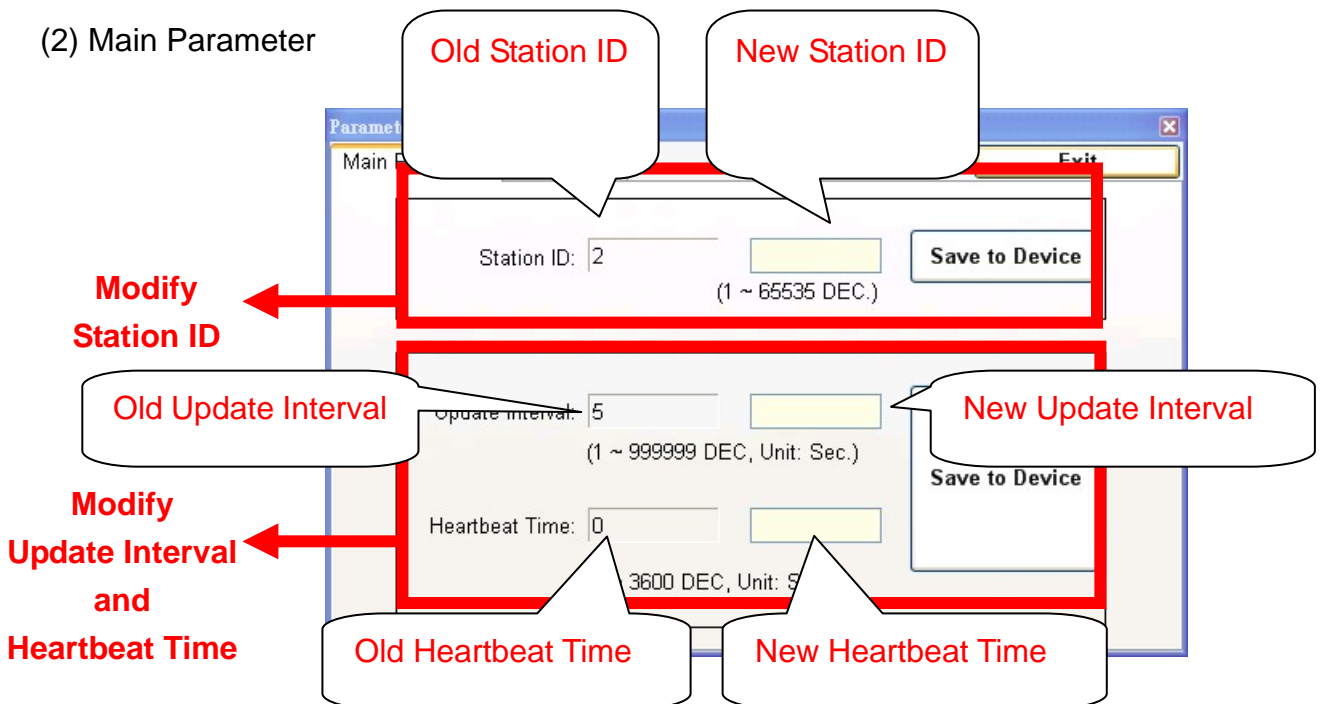
4.7 Modify the module parameters



• Parameters

(1) Right-click the module that you want to modify and select the “Parameters” item.

(2) Main Parameter



Modify Station ID: Modify the station ID of the module.

Text field

- <1> Old Station ID: the old station ID of module.
- <2> New Station ID: the New station ID of module.

Operation

- <1> Save to Device : Set the new Station ID to the assign module.

Modify Update Interval: Modify the Update Interval of the module. Set module report time interval. The module calculate time interval according to report base time. (Unit: sec)

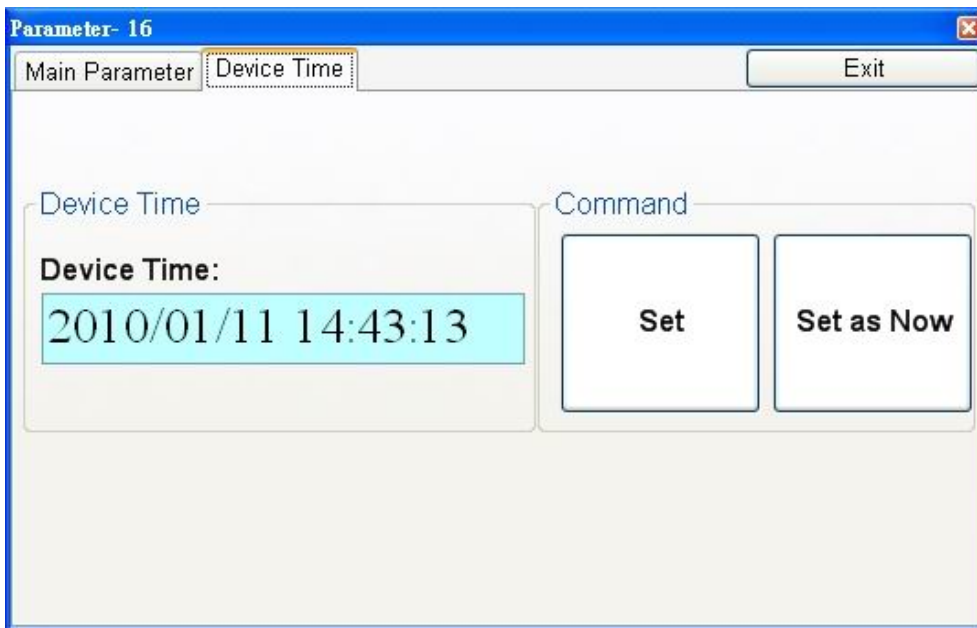
Text field

- <1> Old Update Interval: the old Update Interval of module.
- <2> New Update Interval: the New Update Interval of module.
- <3> Old Heartbeat Time: the old Heartbeat Time of module.
- <4> New Heartbeat Time: the New Heartbeat Time of module.

Operation

- <1> Save to Device : Set the new Update Interval to the assign module.

(3) Device Time



Text field :

Device time: show the time of module. Users also can change the time in this field to key in the specific time.

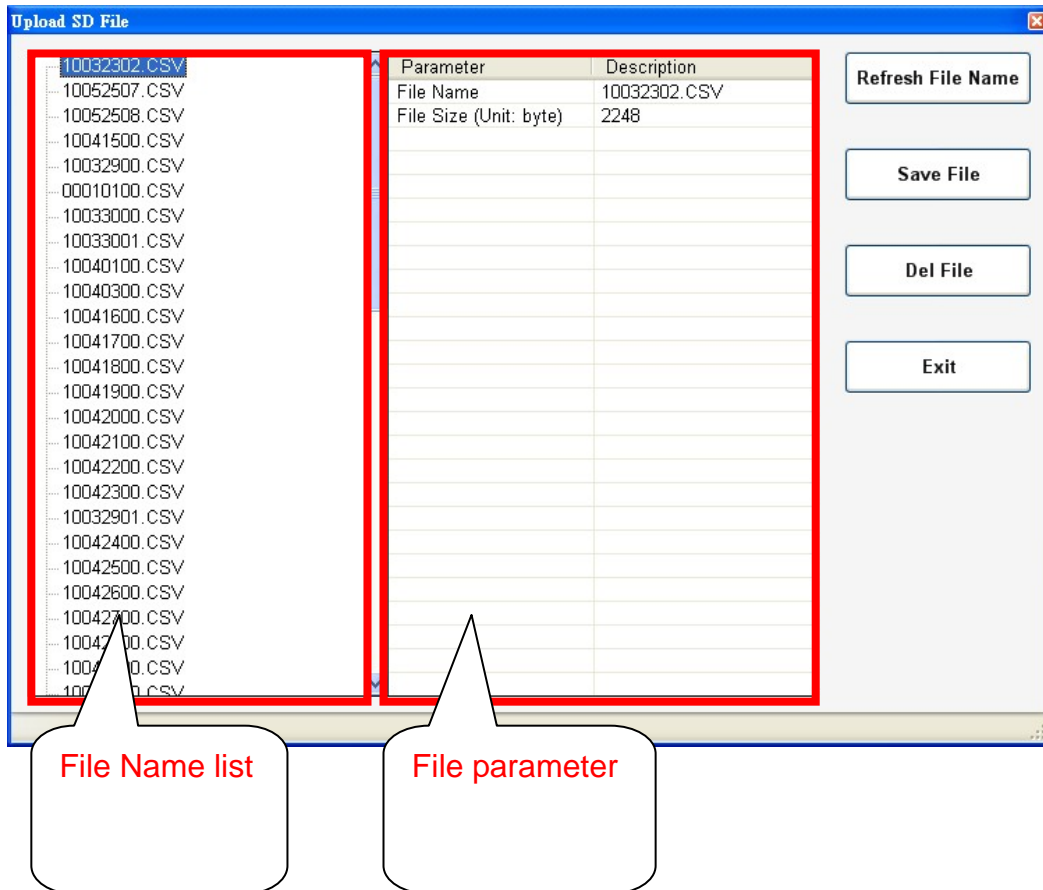
Operation:

- (1) "Set as Now": Set the PC time to module. After setting the time successfully, the information of module time.
- (2) Set: Set the module time according the "Device Time" field. After setting the time successfully, the information of module time would be updated.

• **Close the connection**

- (1) Right-click the module that you want to modify and select the "Close the connection" item.
- (2) Close the assign connection.

• **Upload SD File**



- (1) Right-click the module that you want to modify and select the "Upload SD File" item.

(2) Upload SD File

Text field

- <1> File name list: List all the file names.
- <2> File parameter: List this file parameter. Like: File name and File size.

Operation

- <1> Refresh File Name : Refresh the File name list from the remote module.
- <2> Save File : Upload and Save the assign File from the remote module.
- <3> Del File : Delete the assign SD File on the remote module.
- <4> Exit : Exit upload sd file program.

Version Record

Version	By	Date	Description
1.00	Yide	2010/02/12	
1.01	Yide	2010/03/28	
1.02	Yide	2010/06/02	