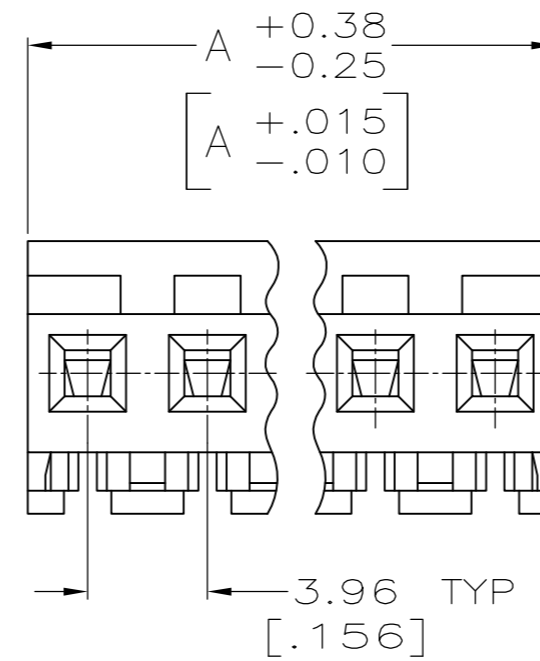
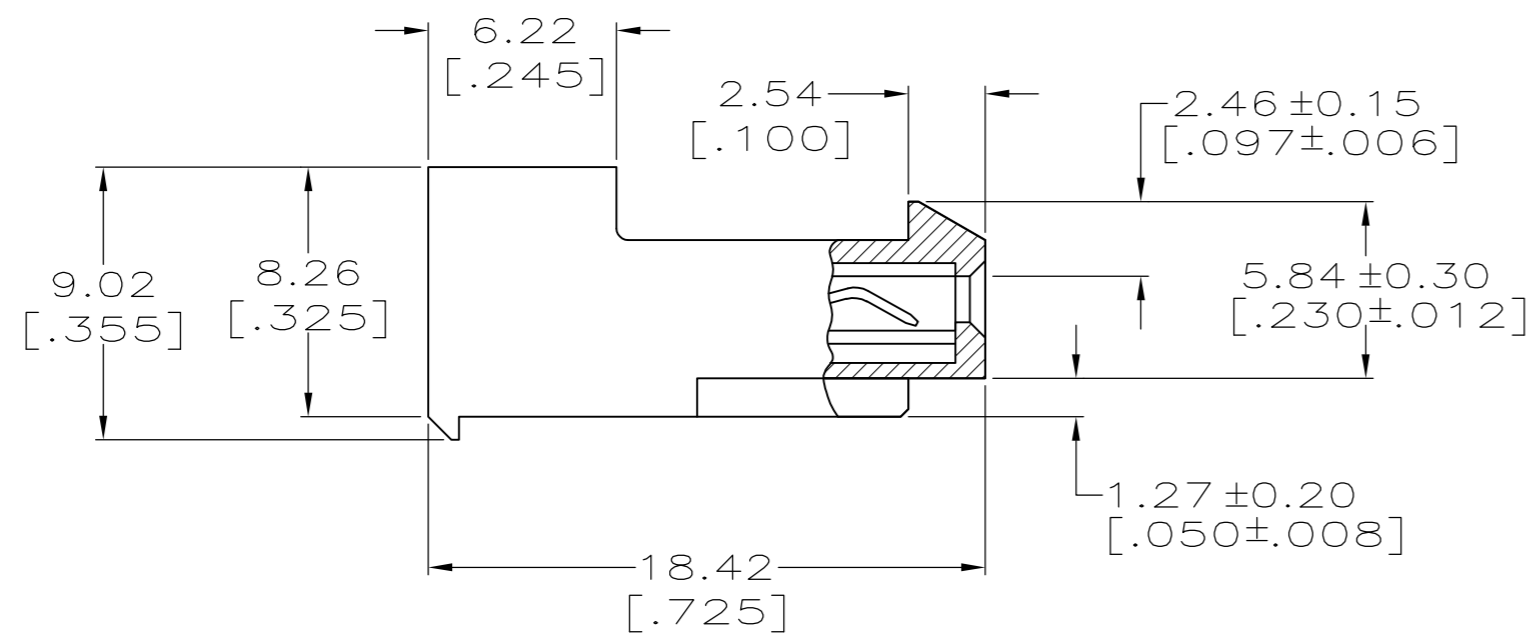
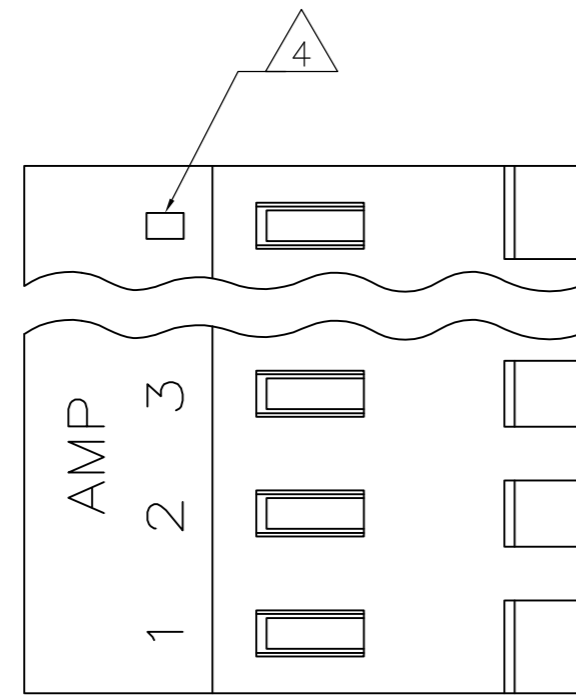


THIS DRAWING IS UNPUBLISHED. RELEASED FOR PUBLICATION  
 © COPYRIGHT - By - TE CONNECTIVITY ALL RIGHTS RESERVED.

LOC	DIST	REVISIONS					
CM	0	P	LTR	DESCRIPTION	DATE	DWN	APVD
		R		REVISED PER ECR-20-000820	27MAY2020	PC	SW



**1** MATERIAL:  
 CONNECTOR - NYLON UL94V-2 (YELLOW)  
 CONTACTS - 0.30[.012] THICK COPPER ALLOY.  
 PLATING - 0.00038[.000015] GOLD THK OR 0.00008[.000003] MIN THK GOLD FLASH OVER 0.00030[.000012] THK PALLADIUM NICKEL, PER TE CONNECTIVITY'S DISCRETION, IN CONTACT AREA. 0.00203[.000080] MIN THICKNESS MATTE TIN IN SLOT AREA FOR 641149-2 THRU 2-641149-4 OR MATTE WHISKER MITIGATED TIN IN SLOT AREA FOR 3-641149-2 THRU 5-641149-4 OVER NICKEL UNDERPLATE.

**2** CONTACTS ACCEPT 20 AWG WIRE WITH 2.41[.095] MAX INSULATION DIAMETER.

**3** CONTACTS MUST ACCEPT 1.14±0.03[.045±.001] SQUARE POST AND REMAIN LOCKED IN POSITION.

**4** IDENTIFICATION NUMBER FOR LAST CIRCUIT MAY NOT APPEAR ON ALL ASSEMBLIES.

**5** DIMENSIONS IN BRACKETS ARE IN INCHES.

**6** HOUSING FEATURES ARE: CLOSED END WITH LOCKING RAMP.

**7** NOTE DELETED.

**8** NOTE DELETED.

**9** OBSOLETE PARTS: OBSOLETE CIS STREAMLINING PER D.RENAUD/D.SINISI.

TIN	95.10	[3.744]	24	5-641149-4
TIN	91.14	[3.588]	23	5-641149-3
TIN	87.17	[3.432]	22	5-641149-2
TIN	83.21	[3.276]	21	5-641149-1
TIN	79.25	[3.120]	20	5-641149-0
TIN	75.29	[2.964]	19	4-641149-9
TIN	71.32	[2.808]	18	4-641149-8
TIN	67.36	[2.652]	17	4-641149-7
TIN	63.40	[2.496]	16	4-641149-6
TIN	59.44	[2.340]	15	4-641149-5
TIN	55.47	[2.184]	14	4-641149-4
TIN	51.51	[2.028]	13	4-641149-3
TIN	47.55	[1.872]	12	4-641149-2
TIN	43.59	[1.716]	11	4-641149-1
TIN	39.62	[1.560]	10	4-641149-0
TIN	35.66	[1.404]	9	3-641149-9
TIN	31.70	[1.248]	8	3-641149-8
TIN	27.74	[1.092]	7	3-641149-7
TIN	23.77	[.936]	6	3-641149-6
TIN	19.81	[.780]	5	3-641149-5
TIN	15.85	[.624]	4	3-641149-4
TIN	11.89	[.468]	3	3-641149-3
TIN	7.92	[.312]	2	3-641149-2
SUPERSEDED	95.10	[3.744]	24	2-641149-4
SUPERSEDED	91.14	[3.588]	23	2-641149-3
SUPERSEDED	87.17	[3.432]	22	2-641149-2
SUPERSEDED	83.21	[3.276]	21	2-641149-1
SUPERSEDED	79.25	[3.120]	20	2-641149-0
SUPERSEDED	75.29	[2.964]	19	1-641149-9
SUPERSEDED	71.32	[2.808]	18	1-641149-8
SUPERSEDED	67.36	[2.652]	17	1-641149-7
SUPERSEDED	63.40	[2.496]	16	1-641149-6
SUPERSEDED	59.44	[2.340]	15	1-641149-5
SUPERSEDED	55.47	[2.184]	14	1-641149-4
SUPERSEDED	51.51	[2.028]	13	1-641149-3
SUPERSEDED	47.55	[1.872]	12	1-641149-2
SUPERSEDED	43.59	[1.716]	11	1-641149-1
SUPERSEDED	39.62	[1.560]	10	1-641149-0
OBSOLETE	35.66	[1.404]	9	641149-9
SUPERSEDED	31.70	[1.248]	8	641149-8
SUPERSEDED	27.74	[1.092]	7	641149-7
SUPERSEDED	23.77	[.936]	6	641149-6
OBSOLETE	19.81	[.780]	5	641149-5
OBSOLETE	15.85	[.624]	4	641149-4
SUPERSEDED	11.89	[.468]	3	641149-3
SUPERSEDED	7.92	[.312]	2	641149-2

SUPERSEDED	TIN-LEAD			
SUPERSEDED	TIN-LEAD			
OBSOLETE	TIN			
SUPERSEDED	TIN-LEAD			
OBSOLETE	TIN			
OBSOLETE	TIN			
SUPERSEDED	TIN-LEAD			
SUPERSEDED	TIN-LEAD			

THIS DRAWING IS A CONTROLLED DOCUMENT.		DWN B. LEWIS 2-12-91	TE Connectivity	
DIMENSIONS: mm [INCHES]		CHK R. SWING 2-12-91	MTA-156 CONNECTOR ASSEMBLY, 20 AWG, STANDARD	
TOLERANCES UNLESS OTHERWISE SPECIFIED: 0 PLC ± - 1 PLC ± - 2 PLC ± - 3 PLC ± 0.13 [.005] 4 PLC ± - ANGLES ± -		APVD -	NAME	
MATERIAL		PRODUCT SPEC 108-1051	RESTRICTED TO	
FINISH		APPLICATION SPEC 114-1020	SIZE A2	CAGE CODE 00779
FINISH		WEIGHT -	DRAWING NO 641149	SCALE 4:1
FINISH		CUSTOMER DRAWING	SHEET 1 OF 1	REV R