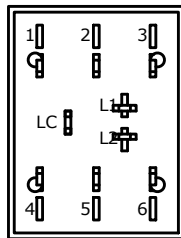
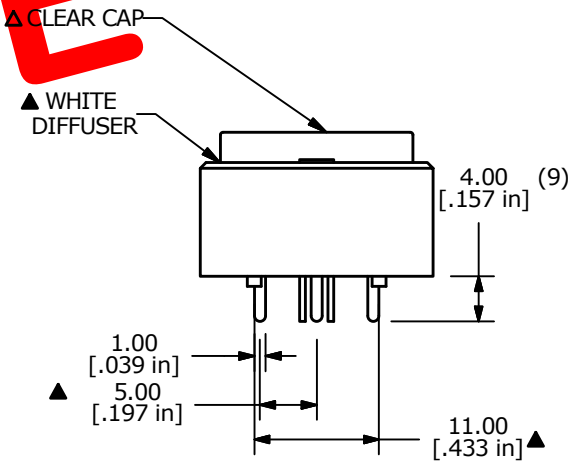
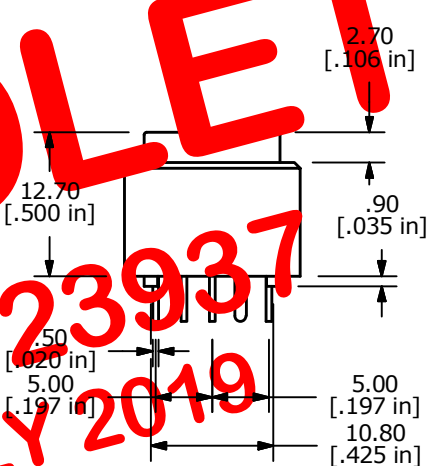


- NOTES:
- ALL DIMENSIONS IN MM
 - GENERAL TOLERANCE: X.X=±0.4
X.XX=±0.25
 - TERM. NOS. FOR REFERENCE ONLY
 - CONTACT RATING: 0.5A @ 100 VAC OR 25 VDC
0.2A @ 250 VAC
 - CONTACT MATERIAL: SILVER
 - ELECTRICAL LIFE: 200,000 Typical
 - MECHANICAL LIFE: 1,000,000 CYCLES TYP.
 - OPERATING TEMP: -20°C TO +70°C
 - OPERATING FORCE: 300 ± 150 gf
 - CONTACT RESISTANCE: 50 MILLI-OHM INITIAL TYP. MAX.
 - INSULATION RESISTANCE: 500VDC, 100 MΩ MIN.
 - DIELECTRIC STRENGTH: 1000 VAC FOR 1 MINUTE
 - TRAVEL TO MAKE: 2.20mm ± 0.2
 - 2002/95/EC (ROHS) COMPLIANT
 - ▲ DENOTES CRITICAL PARAMETER
 - LED COLOR: RED: 3 CHIPS; 1.7VDC, @20mA TYP.
GRN: 3 CHIPS; 2.1VDC, @20mA TYP.

OBSOLETE
 PCR 23937
 JULY 2019



B	19748	UPDATE DRAWINGS	03/09/11	BMA
A	18304	RELEASE FOR PRODUCTION	11/18/08	BLR
REV	PCR NO	DESCRIPTION	DATE	BY

THE INFORMATION CONTAINED IN THIS DOCUMENT IS PROPRIETARY TO E-SWITCH AND IS NOT TO BE COPIED OR TRANSFERRED

E-SWITCH®				
TITLE ULP22OAP1QRFCL1REDGRN				
SCALE	DATE	DR	DWG	REV
1.5 : 1	11/19/2008	BLR	B800051	B