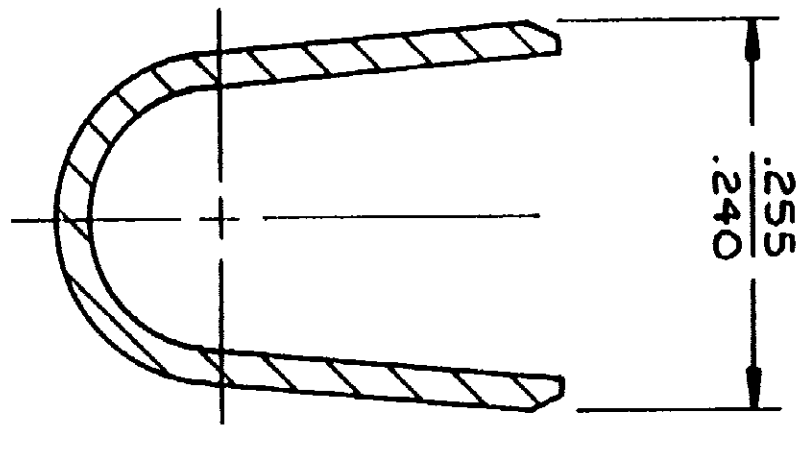
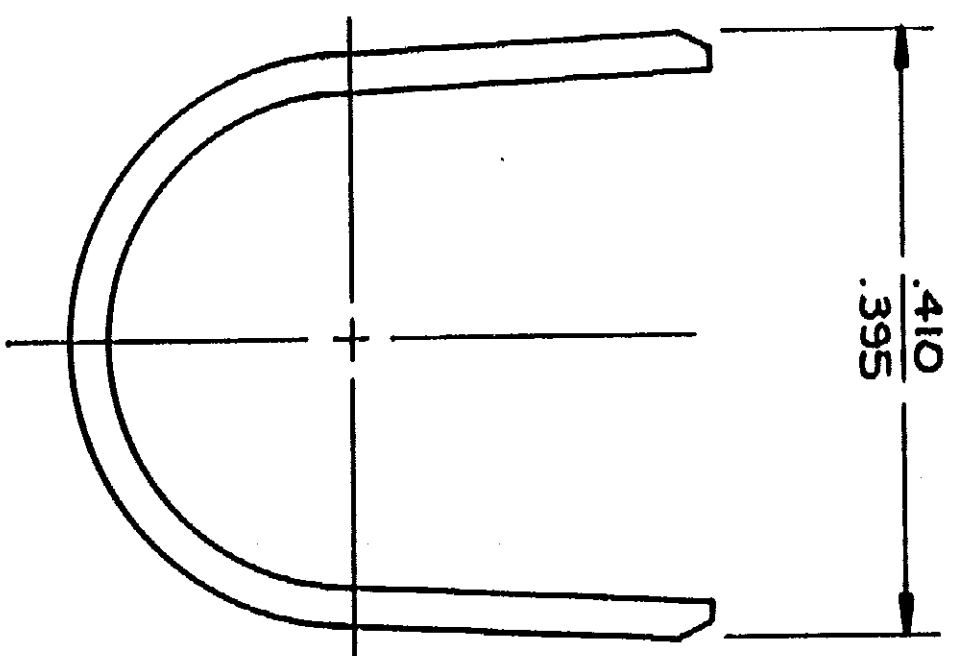
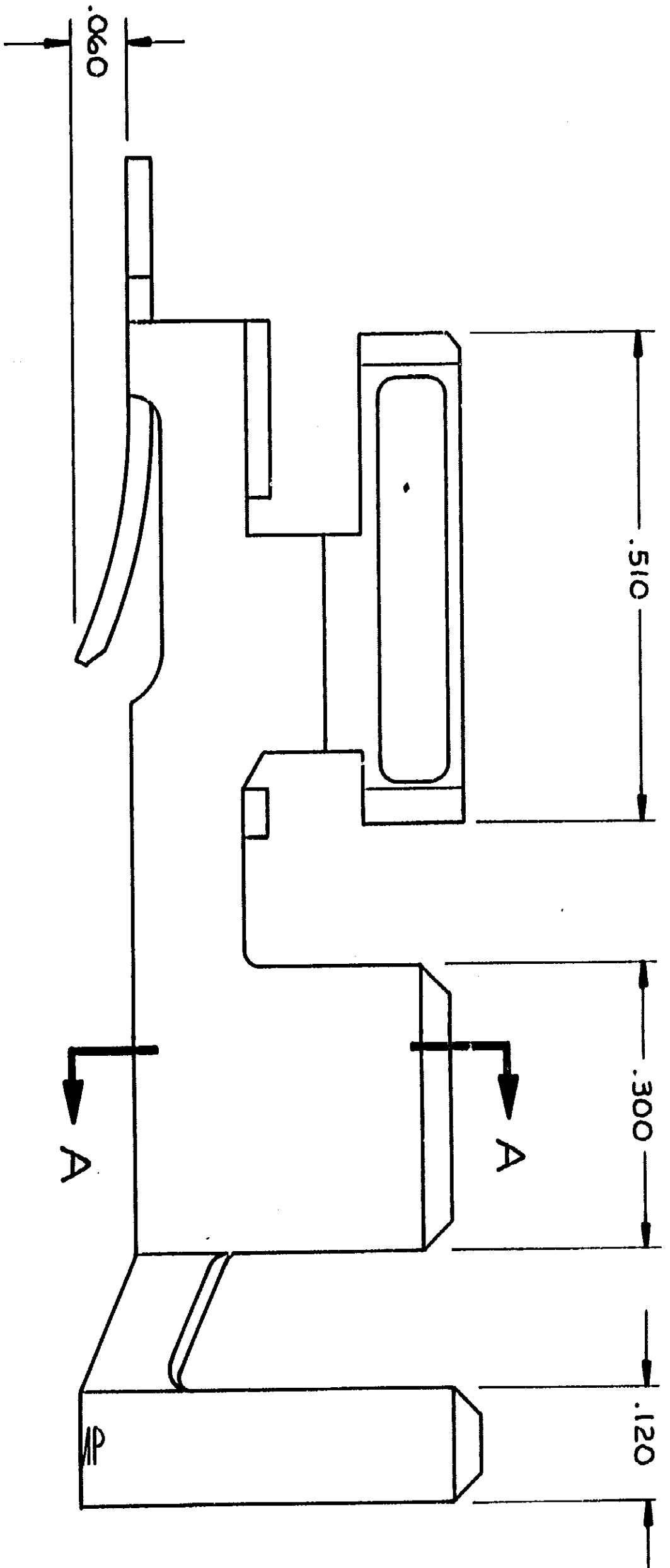
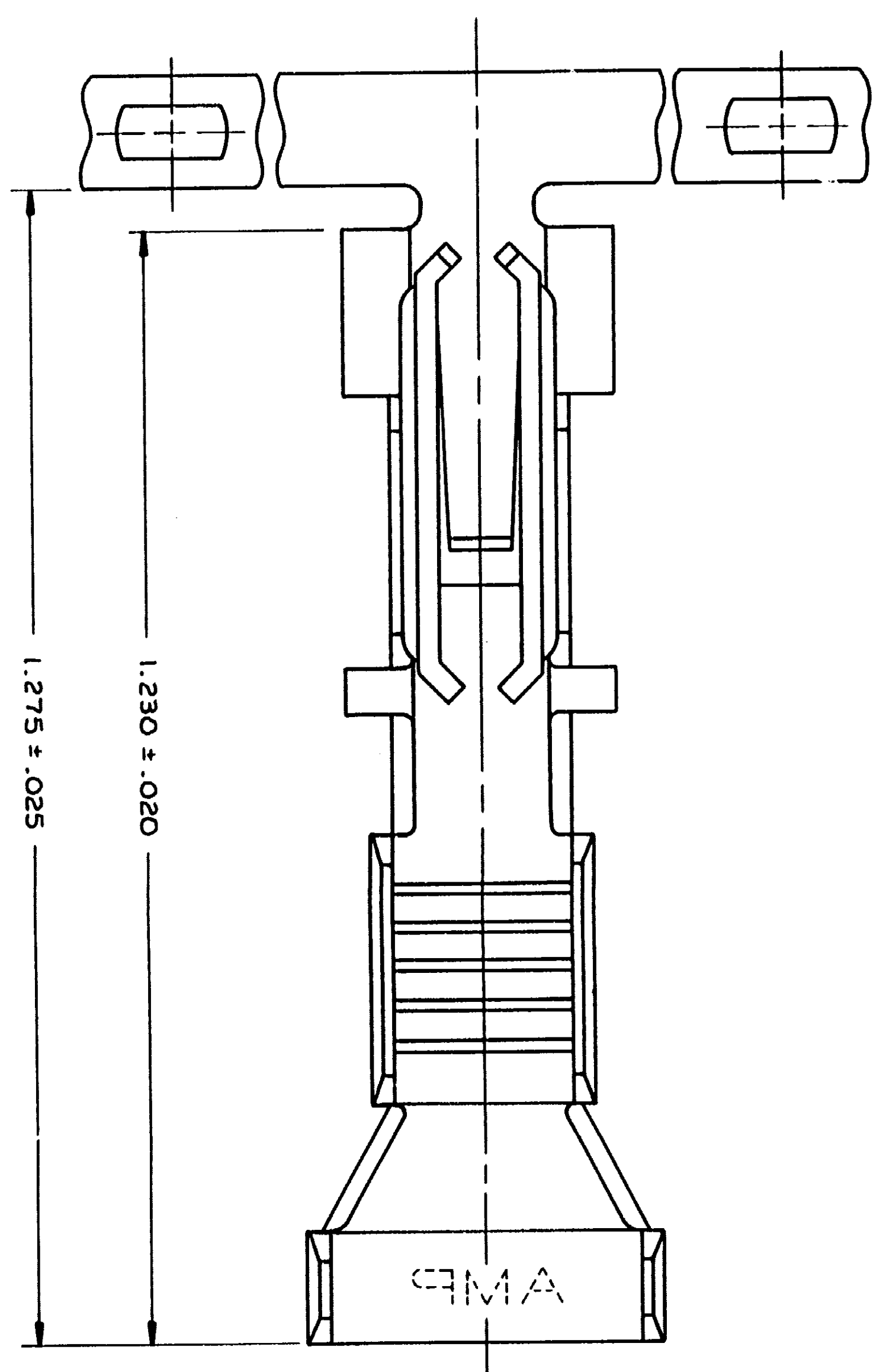
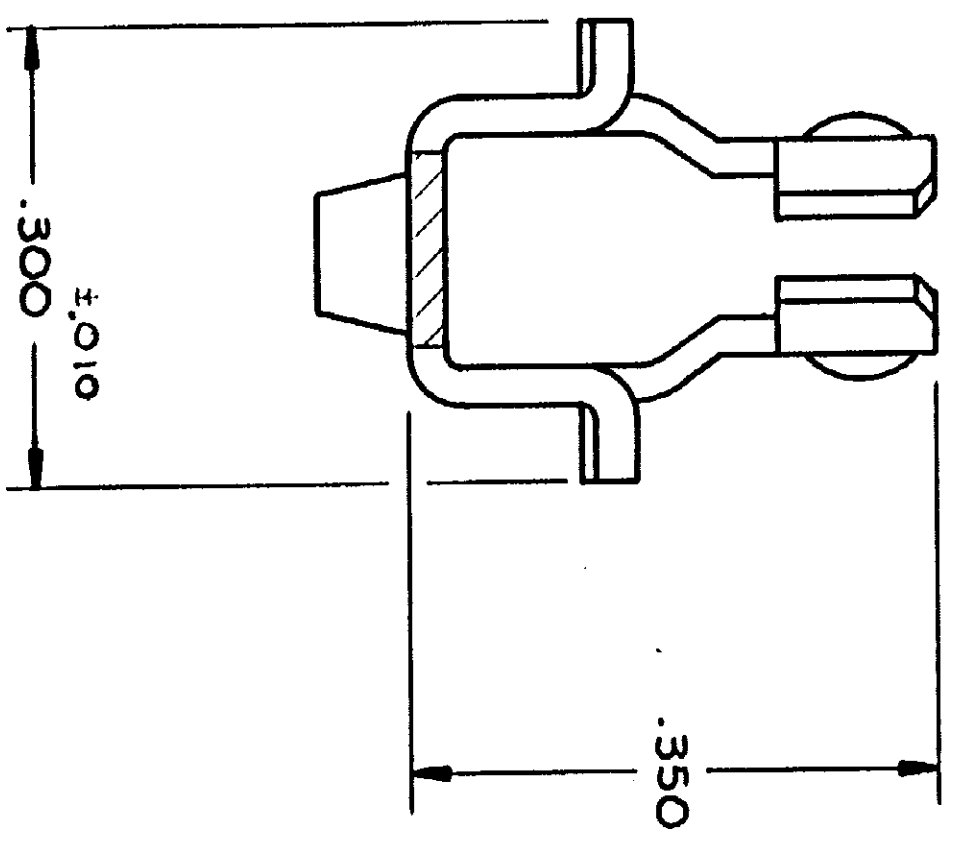


DRAWING MADE IN THIRD ANGLE PROJECTION
 THIS DRAWING IS UNPUBLISHED. RELEASED FOR PUBLICATION
 © COPYRIGHT 1984 BY AMP INCORPORATED, HARRISBURG, PA. ALL INTERNATIONAL RIGHTS RESERVED. AMP PRODUCTS MAY BE COVERED BY U.S. AND FOREIGN PATENTS AND/OR PATENTS PENDING.



SECTION A-A



1. WIRE RANGE : 6 AWG
2. INSULATION RANGE : .360 MAX

REV	DATE	APPROVED	DESCRIPTION
1	7-8-86	CM/rs	RUSD PER TTI CM 86-34
2	8-25-87	ML	WAS LOG CH. REVISED
3	1-14-88	MM 58	ECN 54141
4	8-4-90	BL	REV PER ECN 534173

UNLESS OTHERWISE SPECIFIED DIMENSIONS ARE IN INCHES. TOLERANCES ON: DECIMALS ± .005 ANGLES ± .005 MATERIAL .025 PH BRZ ; FINISH TIN		CONTRACT NO. 7-8-86 DR. C. Mact... CHK. J. J... APPR. D. D... DATE 9-24-86	NAME AMP AMP INCORPORATED HARRISBURG, PA. 17115 TERMINAL, HIGH CURRENT, HERMAPHRODITIC
PRT NO. 770142-1	DSGN APPR.	SIZE D FSCM NO. 00779 DRAWING NO. 770142	SCALE 8:1 SHEET 1 OF 1

CUSTOMER DRAWING