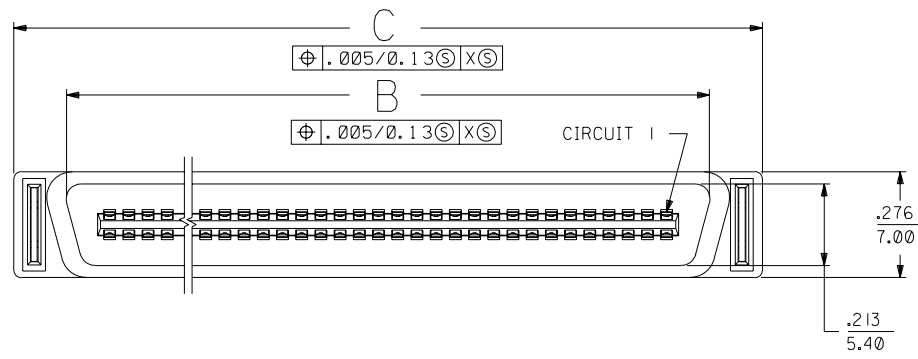
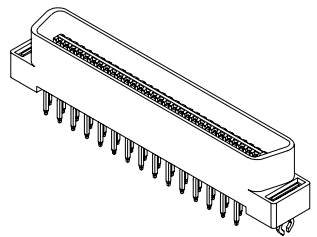
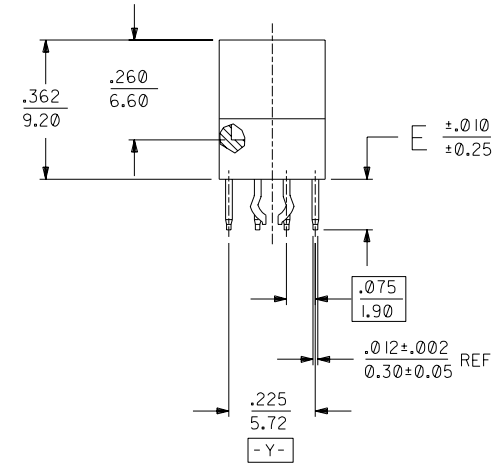
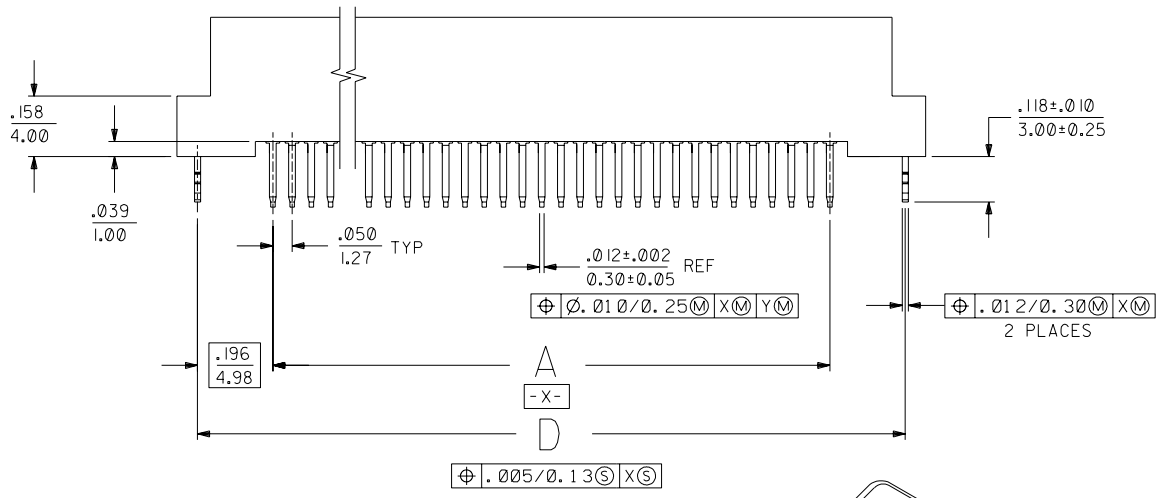


NOTES:

- 1) MATERIALS:
HOUSING - LIQUID CRYSTAL POLYMER (LCP), GLASS FILLED, UL94V-0, COLOR: BLACK
TERMINALS - COPPER ALLOY
METAL PEGS - COPPER ALLOY
- 2) TERMINAL FINISH:
30 MICROINCH/0.76 MICROMETER MINIMUM GOLD IN CONTACT AREA AND 100 MICROINCH/2.54 MICROMETER MINIMUM TIN IN SOLDER TAIL AREA. NICKEL UNDERPLATE OVER ENTIRE TERMINAL.
- 3) ASSEMBLY MATES WITH MOLEX P/N SDA-71660-****. CONFORMS TO PRODUCT SPECIFICATION PS-71660.
- 4) PRODUCT IS PACKAGED PER SPECIFICATION PK-71660.



NOTE FOR LEAD FREE CONVERSION:
THE PRIMARY SHIPPING CARTON WILL BE LABELED "COMPLIANT TO ROHS DIRECTIVE 2002/95/EC AND ELV ANNEX II OF DIRECTIVE 2000/53/EC". CARTONS WITHOUT THIS LABEL MAY CONTAIN PRODUCT WITH LEAD.

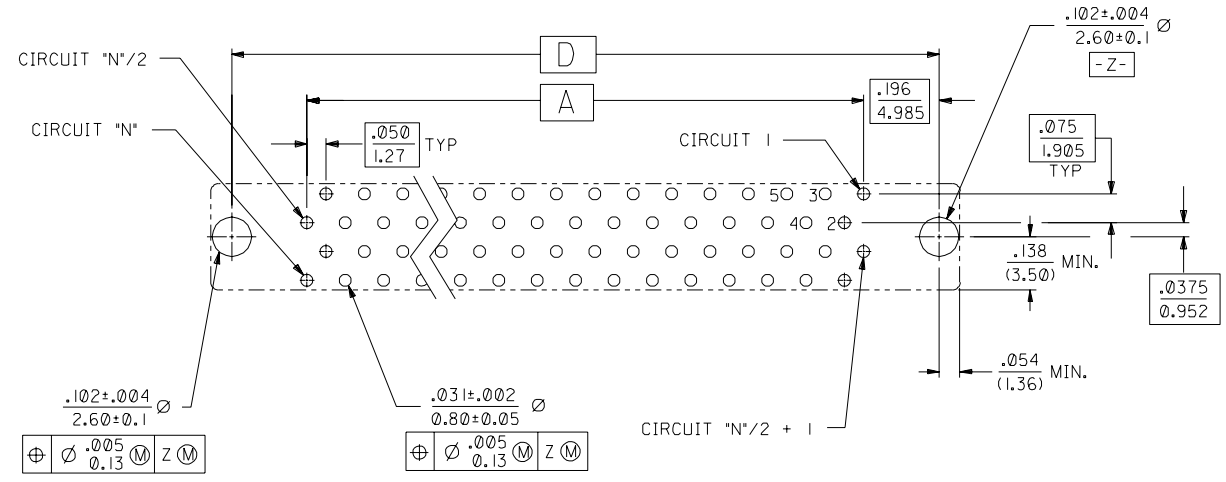
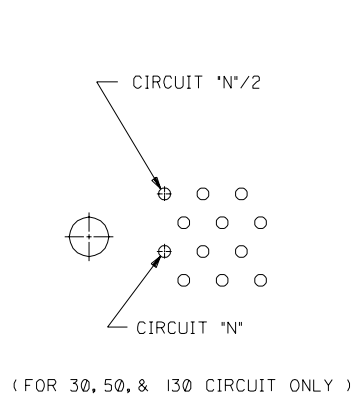


60 CIRCUIT ASSEMBLY SHOWN
SCALE - 2:1

E	LEAD FREE CONV ECN UCP2004-2096 RKADAMS 04/04/26
D	REVISED PER ECN U60641 11-28-95 DRS
C	REVISED PER ECN U40506 4-15-94 RAN
B	REVISED PER ECN U31755 12-3-93 RAN
A	INITIAL RELEASE PER ECN U30874 5-18-93 RAN

DIMENSIONS SHOWN (METRIC) INCH UNLESS OTHERWISE SPECIFIED TOLERANCES: ANGULAR ± 1/2°		▽ = 0 ▼ = 0 REVISIONS ONLY ON CAD SYSTEM	
3 PLACE ± .005	---	TITLE SALES ASSEMBLY EBBI 50D VERTICAL PLUG W/O CENTER BOARD LOCK & POLAR. PEG	
2 PLACE ± .01 ± 0.13	---	MOLEX INCORPORATED SHEET NO. DATE U.S.A. 1 OF 2 4/23/93	
1 PLACE --- ± 0.25	---	PART NO. DRWG. NO. SDA-71661-9***	
DRAFT WHERE APPLICABLE MUST REMAIN WITHIN DIMENSIONS		SEE TABLE	
DRWG. BY: RAN	CHK'D. BY: RAN	FILE NAME: 571661K9	THIS DRAWING CONTAINS INFORMATION THAT IS PROPRIETARY TO MOLEX INC. AND SHOULD NOT BE USED WITHOUT WRITTEN PERMISSION.
APP'D. BY: CAB	SCALE: 4: 1	DIV.:	SIZE: C

13 12 11 10 9 8 7 6 71661 4 3 2 1



RECOMMENDED PC BOARD LAYOUT Δ
 COMPONENT SIDE
 (FOR 40, 60, 68, 80, 100, & 120 ONLY)

D	.110 (2.79)	3.592 (91.25)	3.699 (93.95)	3.426 (87.02)	3.200 (81.28)	130	71661-9430
	.110 (2.79)	3.342 (84.90)	3.449 (87.60)	3.176 (80.67)	2.950 (74.93)	120	71661-9420
	.110 (2.79)	2.842 (72.20)	2.949 (74.90)	2.676 (67.97)	2.450 (62.23)	100	71661-9400
	.110 (2.79)	2.342 (59.50)	2.449 (62.20)	2.176 (55.27)	1.950 (49.53)	80	71661-9380
	.110 (2.79)	2.042 (51.88)	2.149 (54.58)	1.875 (47.65)	1.650 (41.91)	68	71661-9368
C	.110 (2.79)	1.842 (46.80)	1.949 (49.50)	1.676 (42.57)	1.450 (36.83)	60	71661-9360
	.110 (2.79)	1.592 (40.45)	1.699 (43.15)	1.426 (36.22)	1.200 (30.48)	50	71661-9350
	.110 (2.79)	1.342 (34.10)	1.449 (36.80)	1.176 (29.87)	.950 (24.13)	40	71661-9340
	.110 (2.79)	1.092 (27.75)	1.199 (30.45)	.925 (23.52)	.700 (17.78)	30	71661-9330
	.134 (3.40)	3.592 (91.25)	3.699 (93.95)	3.426 (87.02)	3.200 (81.28)	130	71661-9130
	.134 (3.40)	3.342 (84.90)	3.449 (87.60)	3.176 (80.67)	2.950 (74.93)	120	71661-9120
B	.134 (3.40)	2.842 (72.20)	2.949 (74.90)	2.676 (67.97)	2.450 (62.23)	100	71661-9100
	.134 (3.40)	2.342 (59.50)	2.449 (62.20)	2.176 (55.27)	1.950 (49.53)	80	71661-9080
	.134 (3.40)	2.042 (51.88)	2.149 (54.58)	1.875 (47.65)	1.650 (41.91)	68	71661-9068
	.134 (3.40)	1.842 (46.80)	1.949 (49.50)	1.676 (42.57)	1.450 (36.83)	60	71661-9060
	.134 (3.40)	1.592 (40.45)	1.699 (43.15)	1.426 (36.22)	1.200 (30.48)	50	71661-9050
A	.134 (3.40)	1.342 (34.10)	1.449 (36.80)	1.176 (29.87)	.950 (24.13)	40	71661-9040
	.134 (3.40)	1.092 (27.75)	1.199 (30.45)	.925 (23.52)	.700 (17.78)	30	71661-9030
	E	D	C	B	A	CKT ("N")	ITEM NUMBER

71661

..D	SEE SHEET 111
..C	SEE SHEET 111

DIMENSIONS SHOWN (METRIC) INCH		UNLESS OTHERWISE SPECIFIED TOLERANCES ANGULAR $\pm 1/2^\circ$		REVISIONS	
3 PLACE $\pm .005$		INCH METRIC		MFG. SH. REV. LTR.	
2 PLACE $\pm .01$ ± 0.13		1 PLACE --- ± 0.25		TITLE	
DRAFT WHERE APPLICABLE MUST REMAIN WITHIN DIMENSIONS		PART NO.		SALES_ASSEMBLY_EBBI 50D	
DRAWN BY: RAN		CHK'D BY: RAN		VERTICAL PLUG W/O CENTER BOARD LOCK & POLAR PEG	
APP'D BY: CAB		SCALE: 4:1		MOLEX INCORPORATED	
				SHEET NO. DATE	
				2 4/23/93	
				SEE TABLE	
				SDA-71661-9***	
				THIS DRAWING CONTAINS INFORMATION THAT IS PROPRIETARY TO MOLEX INC. AND SHOULD NOT BE USED WITHOUT WRITTEN PERMISSION.	

13 12 11 10 9 8 7 6 5 4 3 2 1