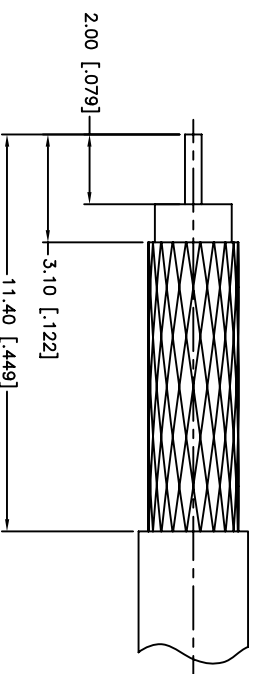
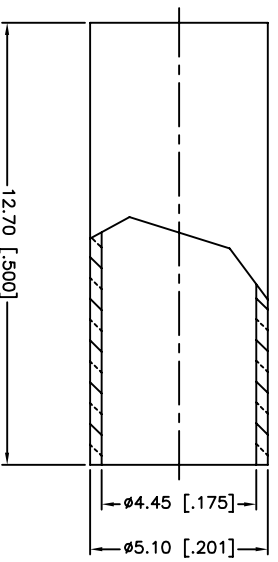
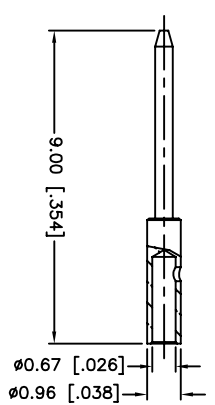
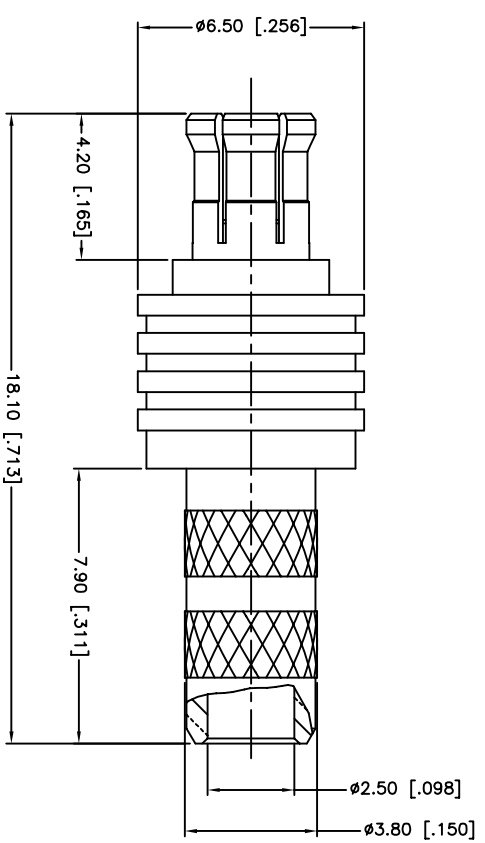


REV.	DATE	ECR NO.	DESCRIPTION
NC	05/28/10	XXXXXX	INITIAL RELEASE
A	07/01/10	2068	CHANGE THE PLATING TO GOLD



RECOMMENDED  
CABLE STRIPPING DIMENSIONS



NOTE:  
1. CONTACT PIN TO SOLDER  
2. CRIMP FERRULE  
HEX CRIMP SIZE .178"

DESCRIPTION	MATERIAL	FINISH	QTY
5 FERRULE	BRASS	GOLD	1
4 HOUSING	BRASS	GOLD	1
3 CONTACT PIN	BRASS	GOLD	1
2 INSULATOR	PTFE	NATURAL	1
1 BODY	BERYLLIUM COPPER	GOLD	1

UNLESS OTHERWISE SPECIFIED DIMENSIONS ARE IN INCHES AND FOR CUSTOMER REFERENCE ONLY.  
UNLESS OTHERWISE SPECIFIED TOLERANCES FOR MILLIMETERS ARE:  
0.5 - 8mm ± 0.20mm  
8 - 30mm ± 0.40mm  
30 - 120mm ± 0.50mm  
UNLESS OTHERWISE SPECIFIED TOLERANCES FOR INCHES ARE:  
.020 - .315 = ± 0.007"  
.315 - 1.180 = ± 0.015"  
1.180 - 4.724 = ± 0.020"  
DO NOT SCALE DRAWING

APPROVALS	DATE
DRAWN F. WANG	07/01/10
CHECKED	
ISSUED	
SHEET 1 OF 1	

**Amphenol Connex**

PART DESCRIPTION  
**MCX CRIMP PLUG(FOR PIC CABLE #V73263)**

PART NO. **252207**

DWG. NO. 252207.DWG

REV. A SIZE A SCALE NA