

ITEM	PART#	DESCRIPTION	QTY	UOM
A	19091026	CNA W/O 2.36MM DIA	1	PC
B	2091102	093 Female Term Chain Tin 14-20	2	PC
C	--	PAPER PRINTED PAPER WHITE	1	PC

FROM	TO	DESCRIPTION	COLOR
A1	--	1X14AWG DISC PVC BK UL1015 HOOKUP	BLACK
A2	--	1X14AWG DISC PVC BK UL1015 HOOKUP	BLACK

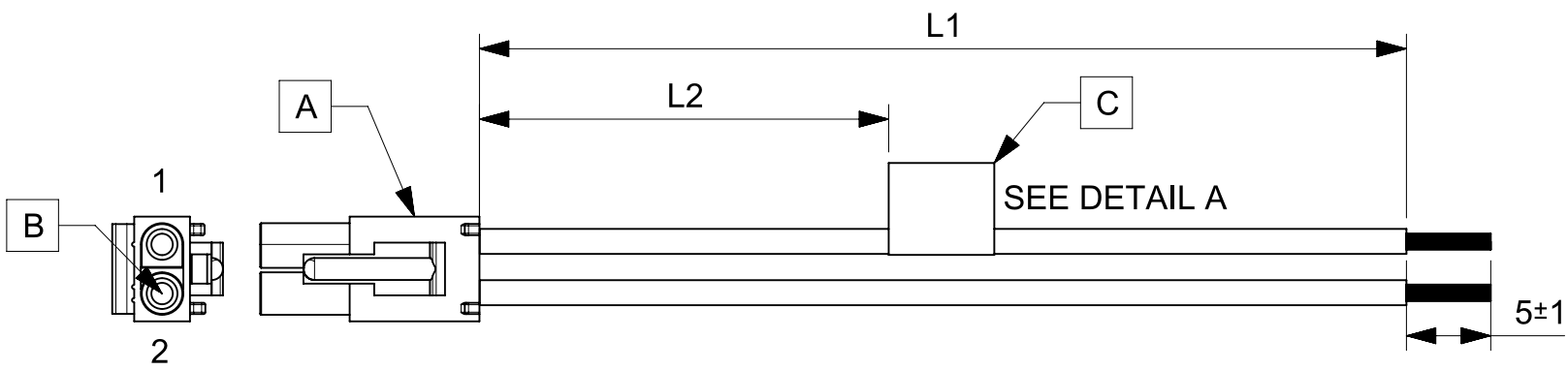


TABLE				
PART NUMBER	L1	L2	TITLE	
2162911021	150±8	63 REF	STANDARD .093 2 CIRCUIT R TO S 150MM	
2162911022	300±10	138 REF	STANDARD .093 2 CIRCUIT R TO S 300MM	
2162911023	600±10	288 REF	STANDARD .093 2 CIRCUIT R TO S 600MM	

NOTES

1. Connector view shown is from mating side.
2. Free ends must be stripped, twisted & tinned. The length of tinning is 5±1mm. Tinning dia must be 2.4mm Max.
3. Label text must be 2mm max. in height with Arial font.
4. Label must be wrapped in Flag type on a single cable.

MOLEX P/N
MOLEX
BATCH WK/YR
DETAIL A

REVISION			
DATE	REV	DESCRIPTION	CHANGER
2020/06/22	A	INITIAL RELEASE	ARAJU

FUNCTIONAL SYMBOLS $\frac{F}{A} = 0$ $\frac{F}{E} = 0$ $\frac{F}{P} = 0$	DIMENSION UNITS: mm SCALE: NTS		CURRENT REV DESC:	
	GENERAL TOLERANCES (UNLESS SPECIFIED)		EC NO: 643258	
	ANGULAR TOL ± °		DRWN: ARAJU 2020/06/22	
	4 PLACES ±		CHK'D: RDESAI01 2020/08/12	
DIVISIONAL SYMBOLS	3 PLACES ±		APPR: RDESAI01 2020/08/12	
	2 PLACES ±		INITIAL REVISION:	
	1 PLACE ±		DRWN: ARAJU 2020/06/22	
	0 PLACES ±		APPR: RDESAI01 2020/08/12	
DRAFT WHERE APPLICABLE MUST REMAIN WITHIN DIMENSIONS		THIRD ANGLE PROJECTION	DRAWING: A4-SIZE	SERIES: 216291

molex

SEE TABLE

PRODUCT CUSTOMER DRAWING

DOCUMENT NUMBER	DOC TYPE	DOC PART	REVISION
2162911021	PSD	000	A

RELEASE STATUS	P1	RELEASE DATE	2020/08/12	08:39:01
----------------	----	--------------	------------	----------