

ITEM	PART#	DESCRIPTION	QTY	UOM
A	436400400	MicroFit 3.0 Plug SR Pnl Mnt 4Ckt	1	PC
B	430310021	MICROFIT 3.0 M CRP TERM CHN TIN 18AWG	4	PC
C	--	PAPER PRINTED PAPER WHITE	1	PC

FROM	TO	DESCRIPTION	COLOR
A1	--	1X18AWG DISC SR-PVC BK UL10002	BLACK
A2	--	1X18AWG DISC SR-PVC BK UL10002	BLACK
A3	--	1X18AWG DISC SR-PVC BK UL10002	BLACK
A4	--	1X18AWG DISC SR-PVC BK UL10002	BLACK

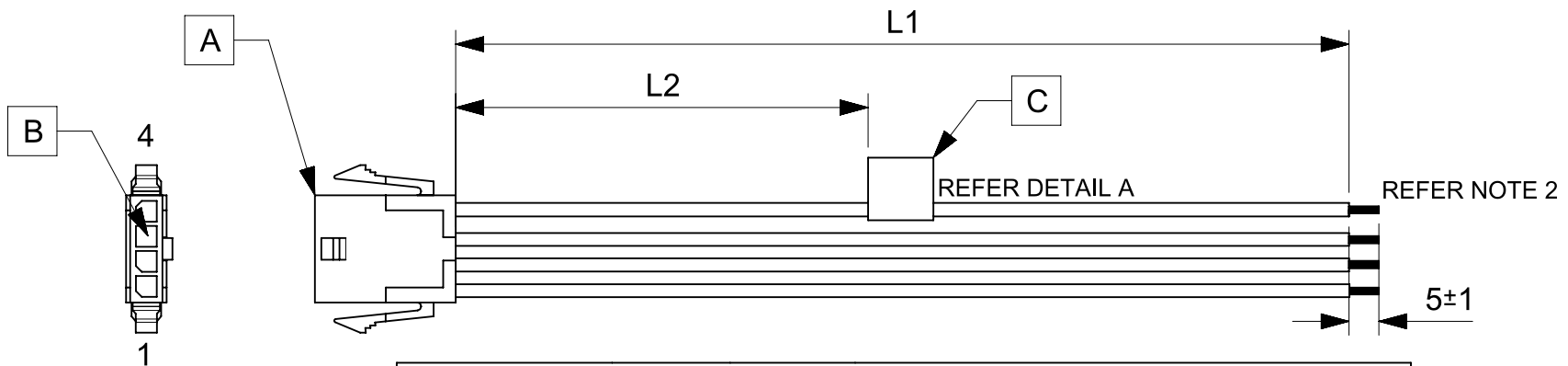


TABLE			
PART NUMBER	L1	L2	TITLE
2147531041	150±8	63 REF	MICROFIT 3.0 SR P-S 4CKT 150 MM Sn
2147531042	300±10	138 REF	MICROFIT 3.0 SR P-S 4CKT 300 MM Sn
2147531043	600±10	288 REF	MICROFIT 3.0 SR P-S 4CKT 600 MM Sn

- NOTES**
- Connector view shown is from mating side.
 - Free ends must be stripped, twisted & tinned. The length of tinning is 5±1mm. Tinning dia must be 1.55mm Max.
 - Label text must be 2mm max. in height with Arial font.
 - Label must be wrapped in Flag type on a single cable.

PRE-RELEASE
 REFERENCE
 USE ONLY

MOLEX P/N
 MOLEX
 BATCH WK/YR
 DETAIL A

REVISION			
DATE	REV	DESCRIPTION	CHANGER
2020/02/29	A	INITIAL RELEASE	ARAJU

THIS DRAWING CONTAINS INFORMATION THAT IS PROPRIETARY TO MOLEX ELECTRONIC TECHNOLOGIES, LLC AND SHOULD NOT BE USED WITHOUT WRITTEN PERMISSION																	
SYMBOLS	DIMENSION UNITS	SCALE	CURRENT REV DESC:														
∇ = 0	mm	NTS	<div style="text-align: center; font-size: 2em; font-weight: bold; margin-bottom: 10px;">molex</div> <p style="text-align: center; font-weight: bold; margin-bottom: 10px;">SEE TABLE</p> <p style="text-align: center; font-weight: bold; margin-bottom: 10px;">PRODUCT CUSTOMER DRAWING</p> <table border="1" style="width: 100%; font-size: small;"> <tr> <td>DOCUMENT NUMBER</td> <td>DOC TYPE</td> <td>DOC PART</td> <td>REVISION</td> </tr> <tr> <td style="text-align: center; font-size: 1.2em;">2147531041</td> <td style="text-align: center;">PSD</td> <td style="text-align: center;">000</td> <td style="text-align: center;">A</td> </tr> </table>							DOCUMENT NUMBER	DOC TYPE	DOC PART	REVISION	2147531041	PSD	000	A
DOCUMENT NUMBER	DOC TYPE	DOC PART								REVISION							
2147531041	PSD	000								A							
∇ = 0	GENERAL TOLERANCES (UNLESS SPECIFIED)																
∇ = 0	ANGULAR TOL ± °																
∇ = 0	4 PLACES	±															
∇ = 0	3 PLACES	±															
∇ = 0	2 PLACES	±															
∇ = 0	1 PLACE	±															
∇ = 0	0 PLACES	±															
∇ = 0	DRAFT WHERE APPLICABLE MUST REMAIN WITHIN DIMENSIONS		THIRD ANGLE PROJECTION	DRAWING	SERIES	MATERIAL NUMBER	CUSTOMER	SHEET NUMBER									
∇ = 0				A4-SIZE	214753	SEE TABLE	GENERAL MARKET	1 OF 1									

RELEASE STATUS	P1	RELEASE DATE	2020/05/14	03:37:12
----------------	----	--------------	------------	----------