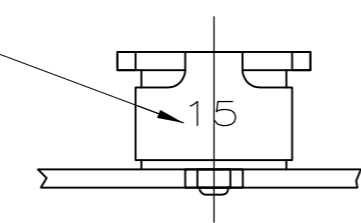


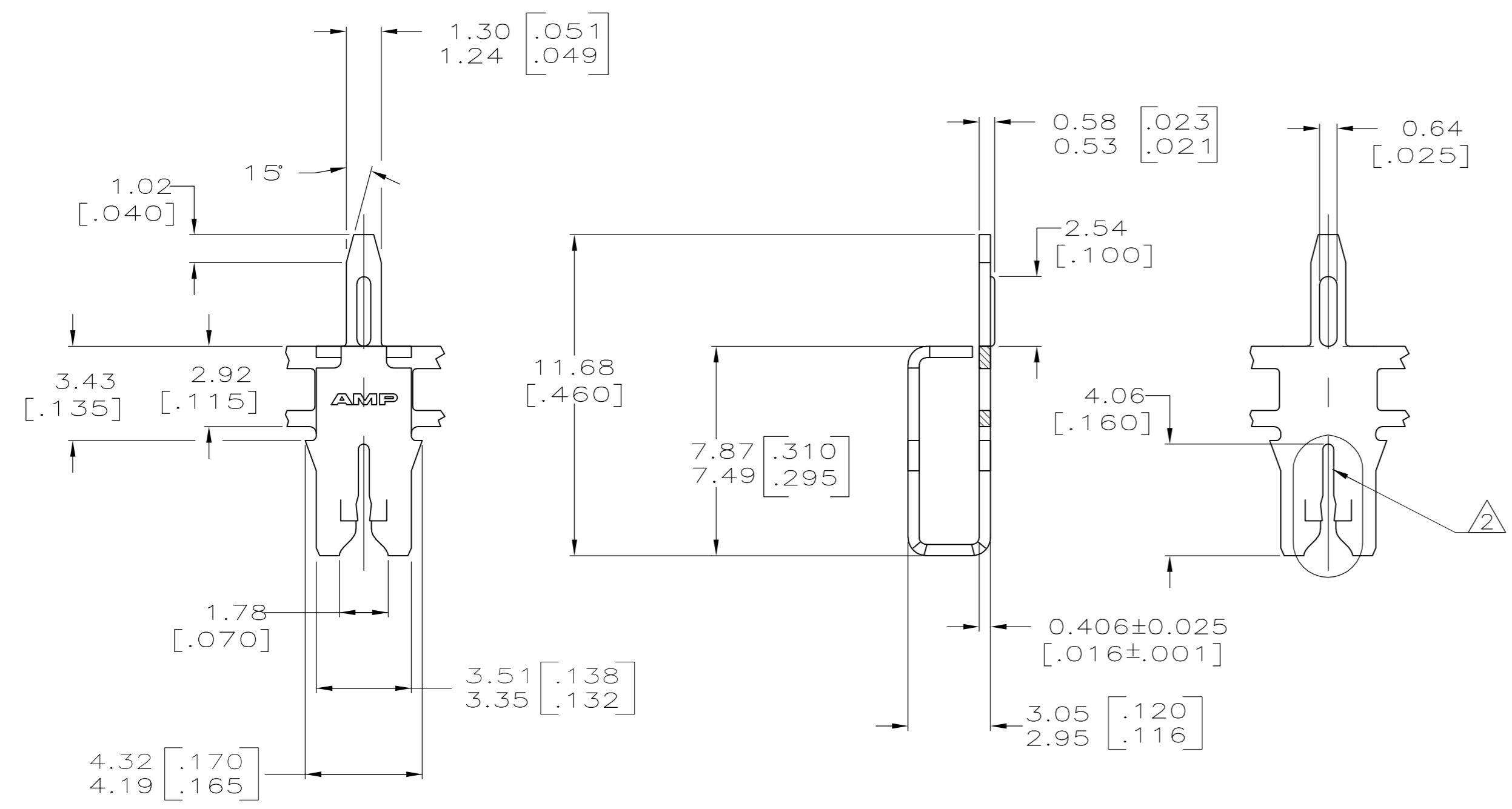
THIS DRAWING IS UNPUBLISHED. RELEASED FOR PUBLICATION  
 © COPYRIGHT - By TE CONNECTIVITY ALL RIGHTS RESERVED.

REVISIONS				
P	LTR	DESCRIPTION	DATE	APVD
D2		REACTIVATE & REMOVE ALUMINIUM WIRE RANGE	23JUN17	SV PK5

IDENTIFICATION NUMBER 15 FOR MAGNET WIRE RANGE



- 1 CONTINUOUS STRIP ON REELS WITH TERMINALS LOCATED ON 5.59 [.220] CENTERS.
- 2 SLOT TERMINATES A SINGLE COPPER MAGNET WIRE ONLY. COPPER RANGE: 0.64-0.81mm [#22-#20] AWG.
- 3 TIN OVER NICKEL UNDERPLATE



63660-1  
 PART NUMBER

THIS DRAWING IS A CONTROLLED DOCUMENT.		DWN MICHAEL S. FEHER 8/14/92	<b>TE</b> TE Connectivity	
DIMENSIONS: INCHES		CHK PHILLIP M. FORTNEY 8/18/9		
TOLERANCES UNLESS OTHERWISE SPECIFIED:		APVD -	NAME POST, SOLDER, MAG-MATE	
0 PLC ± -		PRODUCT SPEC 108-2012	SIZE A2	CAGE CODE 00779
1 PLC ± -		APPLICATION SPEC 114-2046	DRAWING NO C=63660	RESTRICTED TO -
2 PLC ± 0.25 [.010]		MATERIAL 4M BRASS	WEIGHT	SCALE 6:1
3 PLC ± -		FINISH - 3	CUSTOMER DRAWING	SHEET 1 of 1
4 PLC ± -				REV D2
ANGLES ± 1°				