

## Han 24B HBM Rear Fit Frame

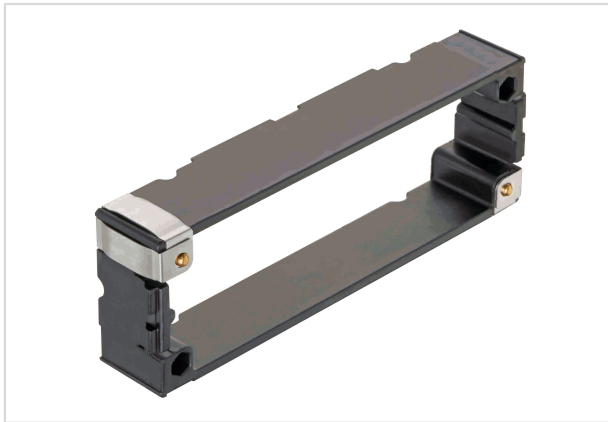


Image is for illustration purposes only. Please refer to product description.

Part number	09 30 024 9301
Specification	Han 24B HBM Rear Fit Frame
HARTING eCatalogue	<a href="https://b2b.harting.com/09300249301">https://b2b.harting.com/09300249301</a>

### Identification

Category	Accessories
Series of hoods/housings	Han <sup>®</sup> B
Type of accessory	Frame
Description of the accessory	Rear mounting

### Version

Size	24 B
------	------

### Material properties

Material (accessories)	Polyamide (PA) Stainless steel
RoHS	compliant with exemption
RoHS exemptions	6(c): Copper alloy containing up to 4 % lead by weight
ELV status	compliant with exemption
China RoHS	50
REACH Annex XVII substances	No
REACH ANNEX XIV substances	No
REACH SVHC substances	Yes
REACH SVHC substances	Lead
ECHA SCIP number	564b7d75-7bf6-4cfb-acb1-2168eb61b675
California Proposition 65 substances	Yes
California Proposition 65 substances	Lead



Pushing Performance

## Commercial data

Packaging size	1
Net weight	1 g
Country of origin	China
European customs tariff number	85389099
eCl@ss	27440210 Fixing element for industrial connectors