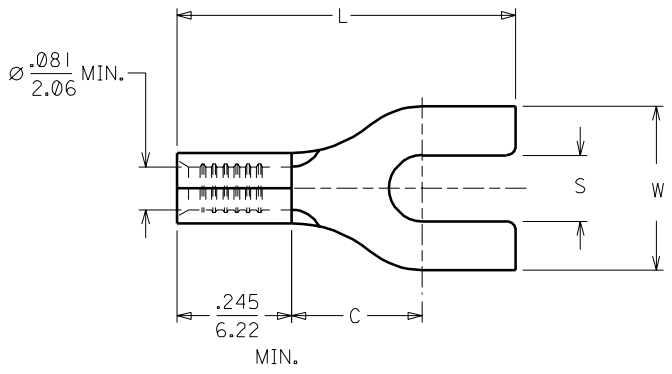
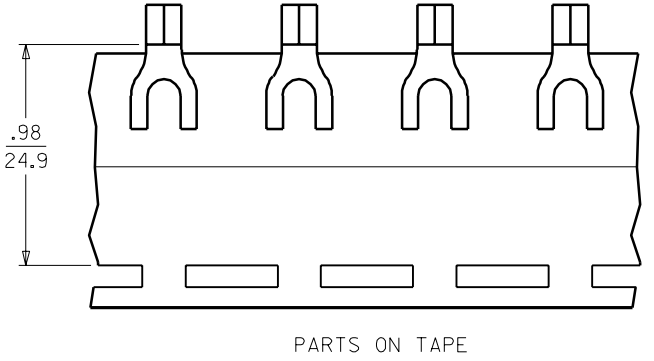


	10	9	8	7	6	5	4	3	2	1	
	MATERIAL NUMBER	ALTERNATE NUMBER	STUD SIZE	"S" ±.005/(0.13)	"W" ±.010/(0.25)	"C"	"L"	PACKAGING			
F	191400085	B-107-04	4	.119/(3.02)	.245/(6.22)	.209/(5.31)	.638/(16.21)	LOOSE PIECE			
	191400086	B-107-06	6	.146/(3.71)	.245/(6.22)	.209/(5.31)	.638/(16.21)				
	191400087	B-124-04	4	.119/(3.02)	.295/(7.49)	.211/(5.36)	.635/(16.13)				
	191400088	B-124-06	6	.146/(3.71)	.295/(7.49)	.211/(5.36)	.635/(16.13)				
	191400089	B-124-08	8	.173/(4.39)	.295/(7.49)	.211/(5.36)	.635/(16.13)				
	191400090	B-127-06	6	.146/(3.71)	.362/(9.19)	.269/(6.83)	.770/(19.56)				
	191400091	B-127-08	8	.173/(4.39)	.388/(9.85)	.269/(6.83)	.770/(19.56)				
	191400093	B-127-10	10	.198/(5.03)	.388/(9.85)	.269/(6.83)	.770/(19.56)				
E	191400129	B-107-04T	4	.119/(3.02)	.245/(6.22)	.209/(5.31)	.638/(16.21)		TAPE MOUNTED		
	191400130	B-107-06T	6	.146/(3.71)	.245/(6.22)	.209/(5.31)	.638/(16.21)				
	191400132	B-124-04T	4	.119/(3.02)	.295/(7.49)	.211/(5.36)	.635/(16.13)				
	191400133	B-124-06T	6	.146/(3.71)	.295/(7.49)	.211/(5.36)	.635/(16.13)				
	191400134	B-124-08T	8	.173/(4.39)	.295/(7.49)	.211/(5.36)	.635/(16.13)				
	191400135	B-127-06T	6	.146/(3.71)	.362/(9.19)	.269/(6.83)	.770/(19.56)				
	191400092	B-127-08T	8	.173/(4.39)	.388/(9.85)	.269/(6.83)	.770/(19.56)				
	191400094	B-127-10T	10	.198/(5.03)	.388/(9.85)	.269/(6.83)	.770/(19.56)				



NOTES:
 1. MATERIAL: COPPER .031/(.79) THICK.
 2. PLATING: ELECTRO-TIN.
 3. ALL DIMENSIONS IN INCHES/(MM).

CUSTOMER DRAWING

A	VOIDS: B-CD-103-02 ETC 1999-0055 1999/11/12 HEB
LTR.	REVISIONS

DIMENSIONS SHOWN (METRIC) INCH UNLESS OTHERWISE SPECIFIED TOLERANCES: ANGULAR ± 1/2°		REVISE ONLY ON CAD SYSTEM													
<table border="1"> <thead> <tr> <th></th> <th>INCH</th> <th>METRIC</th> </tr> </thead> <tbody> <tr> <td>3 PLACE</td> <td>± .005</td> <td>± ---</td> </tr> <tr> <td>2 PLACE</td> <td>± .01</td> <td>± 0.13</td> </tr> <tr> <td>1 PLACE</td> <td>± ---</td> <td>± 0.25</td> </tr> </tbody> </table>			INCH	METRIC	3 PLACE	± .005	± ---	2 PLACE	± .01	± 0.13	1 PLACE	± ---	± 0.25	TITLE SPADE TONGUE TERMINAL 16-14 AWG KRIMPTITE, 100-SERIES	
	INCH	METRIC													
3 PLACE	± .005	± ---													
2 PLACE	± .01	± 0.13													
1 PLACE	± ---	± 0.25													
DRAFT WHERE APPLICABLE MUST REMAIN WITHIN DIMENSIONS		SHEET NO. DATE 1 OF 1 99/11/12													
DRWG. BY: HEB APP'D. BY: RWD		PART NO. DRWG. NO. SEE TABLE SD-19140-001													
CHK'D. BY: RWD SCALE: 4: 1		FILE NAME: 19140001.DGN THIS DRAWING CONTAINS INFORMATION THAT IS PROPRIETARY TO MOLEX-ETC INC. AND SHOULD NOT BE USED WITHOUT WRITTEN PERMISSION.													
		DIV. SIZE ET B													