

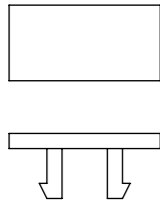
TABLE 1

| MOLEX P/N | ENG. NO. | CABLE LENGTH (mm) | LED |
|------------|-----------------|-------------------|-----|
| 1202470010 | BEB801P-FBW-003 | 300 | YES |
| 1202470011 | BEB801P-FBW-02 | 2000 | YES |
| 1202470012 | BEB801P-FBW-05 | 5000 | YES |
| 1202470013 | BEB801P-FBW-10 | 10000 | YES |
| 1202470014 | BEB801P-FBW-15 | 15000 | YES |
| 1202470015 | BEB801P-FBW-20 | 20000 | YES |
| 1202470034 | BEB8010-FBW-05 | 5000 | NO |
| 1202470035 | BEB8010-FBW-10 | 10000 | NO |
| 1202470036 | BEB8010-FBW-15 | 15000 | NO |

TABLE 2

| ITEM | COMPONENT | MATERIAL | FINISH |
|------|------------------|---------------|------------------|
| 1 | INSERT | TPU | BLACK |
| 2 | CONTACT SOCKET | COPPER ALLOY | GOLD OVER NICKEL |
| 3 | O-RING | VITON | RED |
| 4 | RECEPTACLE SHELL | BRASS | NICKEL PLATED |
| 5 | HOUSING | PBT | BLACK |
| 6 | CABLE | TPU | BLACK |
| 7 | LABEL | ABS | WHITE |
| 8 | LABLE ADHESIVE | PE | WHITE |
| 9 | CABLE PLATE | PBT | BLACK |
| 10 | LED | NO LED = PA | BLACK |
| | | WITH LED = PA | TRANSPARENT |
| 11 | RESIN | EPOXY | TRANSPARENT |

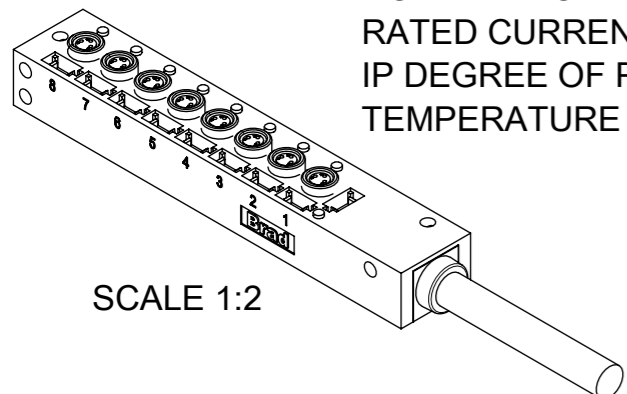
SCALE 2:1



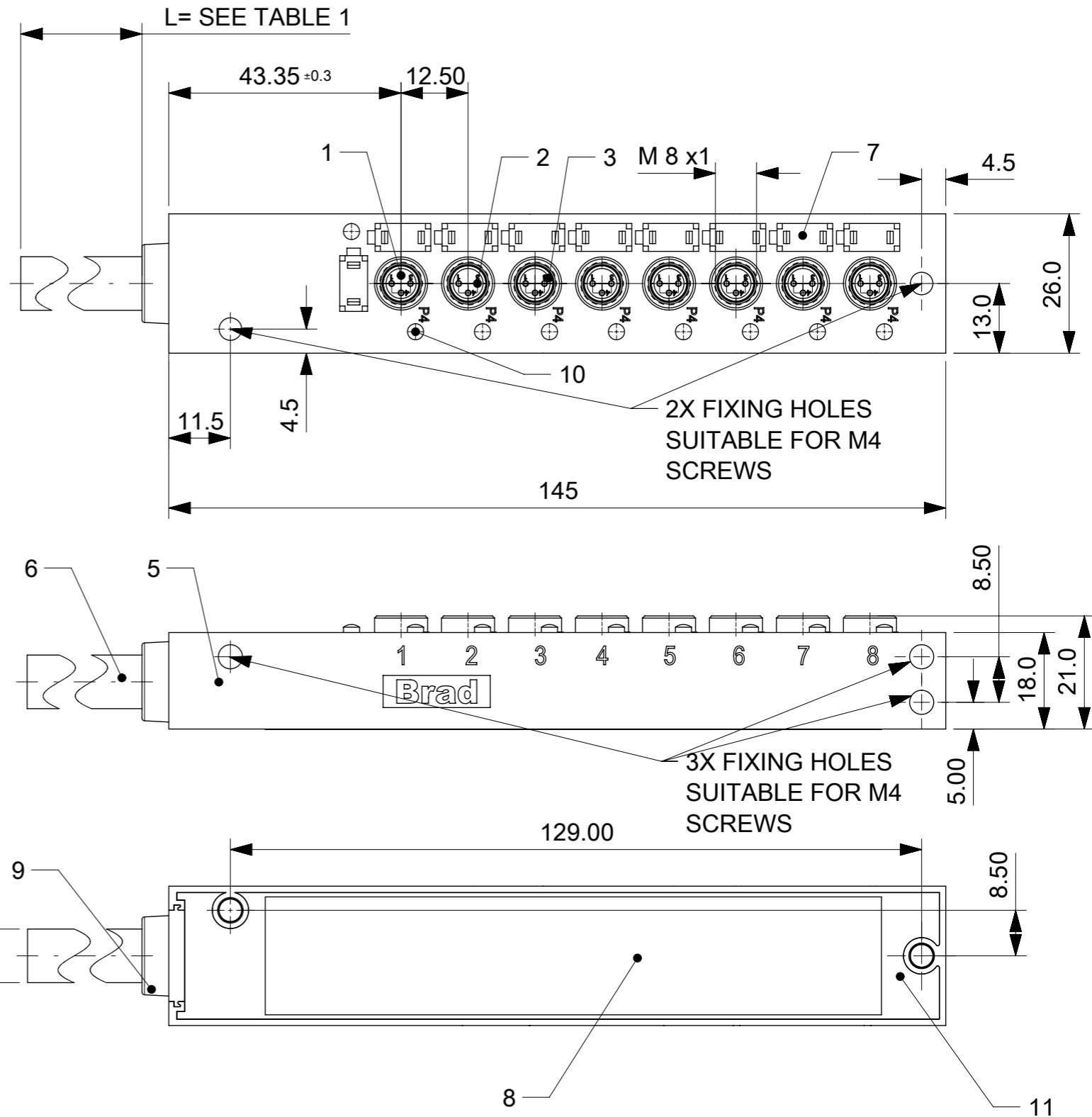
LABEL
9x packed in a bag.

GENERAL CHARACTERISTICS:

NOMINAL VOLTAGE: 24 V DC
 RATED CURRENT: 2 A PER PORT / 6 A MAX: TOTAL
 IP DEGREE OF PROTECTION: IP 68
 TEMPERATURE RANGE: -25°C to + 85°C



SCALE 1:2

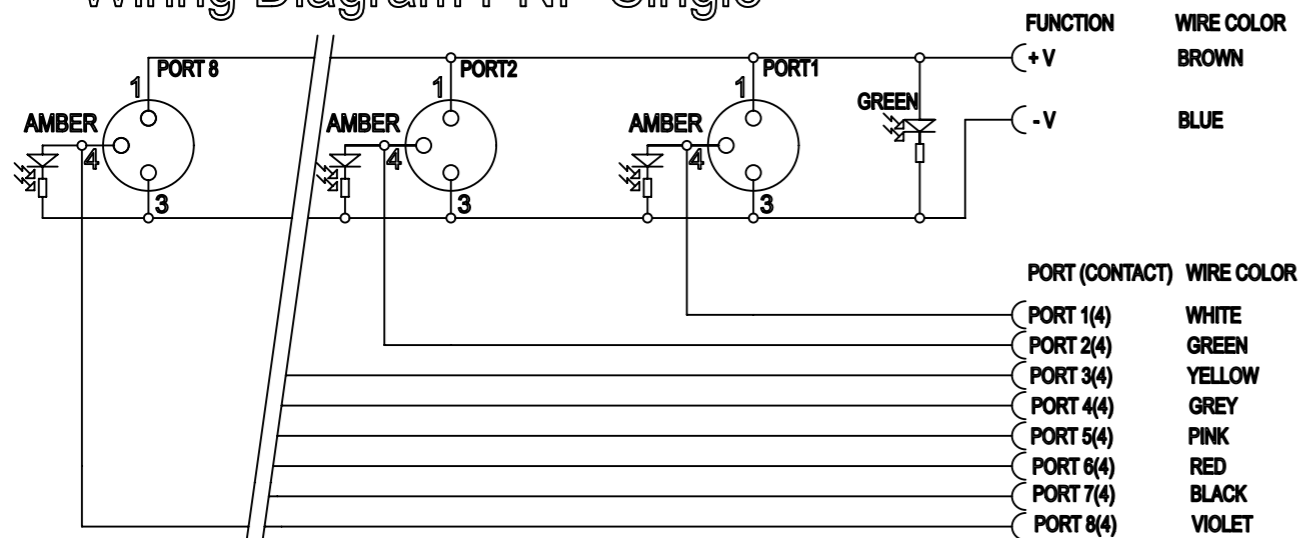


CABLE LENGTH TOLERANCES

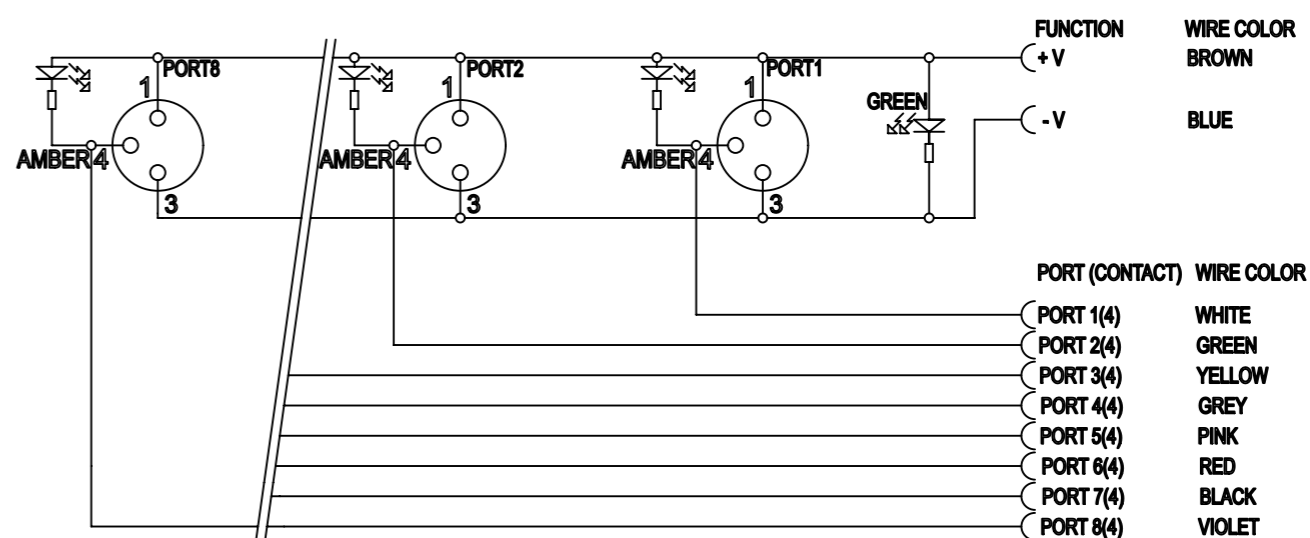
| LENGTH | TOLERANCE |
|----------|------------|
| 0m-1m | +40 mm |
| >1m-5m | +60 mm |
| >5m-10m | +80 mm |
| >10m-20m | +140 mm |
| >20m-30m | +160 mm |
| >30m | +1% length |

| FUNCTIONAL SYMBOLS | THIS DRAWING CONTAINS INFORMATION THAT IS PROPRIETARY TO MOLEX ELECTRONIC TECHNOLOGIES, LLC AND SHOULD NOT BE USED WITHOUT WRITTEN PERMISSION |
|--|--|
| DIMENSION UNITS: mm SCALE: 1:1 GENERAL TOLERANCES (UNLESS SPECIFIED): ANGULAR TOL: ± ° DIVISIONAL SYMBOLS: | CURRENT REV DESC: ADDED CABLE TOLERANCE TABLE EC NO: 699789 DRWN: MDHARMANTI 2022/03/11 CHK'D: RSILLER 2022/03/17 APPR: RSILLER 2022/03/17 INITIAL REVISION: DRWN: ULETTENMEIER 2015/01/20 APPR: RSILLER 2015/04/22 DRAFT WHERE APPLICABLE MUST REMAIN WITHIN DIMENSIONS THIRD ANGLE PROJECTION DRAWING: A3-SIZE SERIES: 120247 MATERIAL NUMBER: SEE TABLE 1 CUSTOMER: GENERAL MARKET SHEET NUMBER: 1 OF 2 |
| | |
| MPIS M8 PNP NPN NOS 3P 8PT BK XM SINGLE | |
| PRODUCT CUSTOMER DRAWING | |
| DOCUMENT NUMBER | DOC TYPE DOC PART REVISION |
| 1202470010 | PSD 000 B1 |

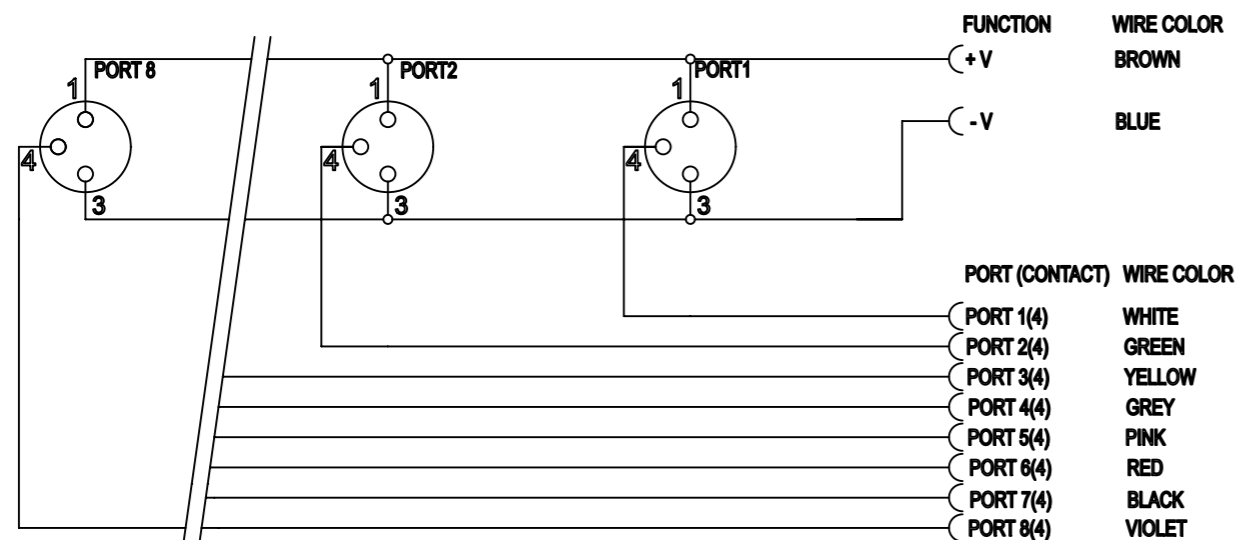
Wiring Diagram PNP Single



Wiring Diagram NPN Single



Wiring Diagram NON LED Single



| | | | | | |
|--|---|---|--------------------------|----------|-----------------|
| FUNCTIONAL SYMBOLS | THIS DRAWING CONTAINS INFORMATION THAT IS PROPRIETARY TO MOLEX ELECTRONIC TECHNOLOGIES, LLC AND SHOULD NOT BE USED WITHOUT WRITTEN PERMISSION | | | | |
| | $\nabla_A = 0$ $\nabla_E = 0$ $\nabla_V = 0$ | DIMENSION UNITS: mm SCALE: 1:1 GENERAL TOLERANCES (UNLESS SPECIFIED) ANGULAR TOL ± ° | | | |
| DIVISIONAL SYMBOLS | 4 PLACES ± | | PRODUCT CUSTOMER DRAWING | | |
| | 3 PLACES ± | | DOCUMENT NUMBER | DOC TYPE | DOC PART |
| | 2 PLACES ± 0.2 | | 1202470010 | PSD | 000 |
| | 1 PLACE ± 0.3 | | | | B1 |
| 0 PLACES ± 0.5 | | | | | |
| DRAFT WHERE APPLICABLE MUST REMAIN WITHIN DIMENSIONS | | THIRD ANGLE PROJECTION | DRAWING | SERIES | MATERIAL NUMBER |
| | | | A3-SIZE | 120247 | SEE TABLE 1 |
| | | | | | CUSTOMER |
| | | | | | GENERAL MARKET |
| | | | | | SHEET NUMBER |
| | | | | | 2 OF 2 |