

Power Inductor

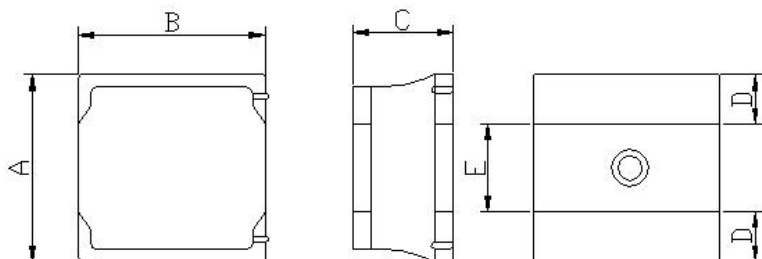
HPC3010TF-SERIES

1. Features

1. This specification applies Low Profile Power Inductors.
2. 100% Lead(Pb) & Halogen-Free and RoHS compliant.
3. Operating temperature : -40~+125°C (Including self - temperature rise).



2. Dimension



Series	A(mm)	B(mm)	C(mm)	D(mm)	E(mm)
HPC3010TF	3.0±0.2	3.0±0.2	1.0max.	1.0 ref.	1.0 ref.

3. Part Numbering

HPC **3010** **TF** - **4R7** **M**

A B C D E

A: Series

B: Dimension

C: Lead Free

D: Inductance

4R7=4.7uH

E: Inductance Tolerance

M=±20% ; Y=±30%

4. Specification

TAI-TECH Part Number	Inductance (uH)	Tolerance (%)	Test Frequency (Hz)	DCR (Ω) ±20%	I sat (A)	I rms (A)
HPC3010TF-1R0Y	1.00	±30%	0.1V/1M	0.055	2.20	2.50
HPC3010TF-1R5Y	1.50	±30%	0.1V/1M	0.070	2.00	2.20
HPC3010TF-2R2M	2.20	±20%	0.1V/1M	0.090	1.60	2.10
HPC3010TF-3R3M	3.30	±20%	0.1V/1M	0.130	1.30	1.70
HPC3010TF-4R7M	4.70	±20%	0.1V/1M	0.170	1.20	1.50
HPC3010TF-6R8M	6.80	±20%	0.1V/1M	0.260	0.90	1.30
HPC3010TF-100M	10.0	±20%	0.1V/1M	0.350	0.75	1.00
HPC3010TF-150M	15.0	±20%	0.1V/1M	0.510	0.65	0.80
HPC3010TF-220M	22.0	±20%	0.1V/1M	0.750	0.55	0.75

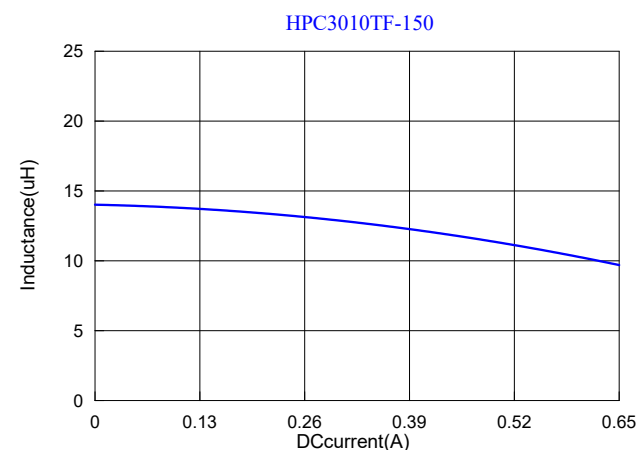
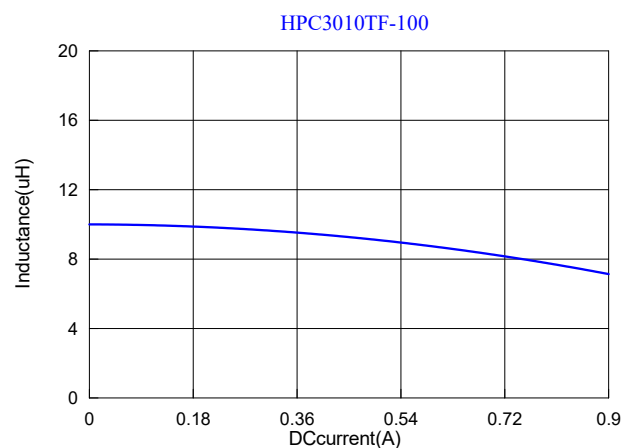
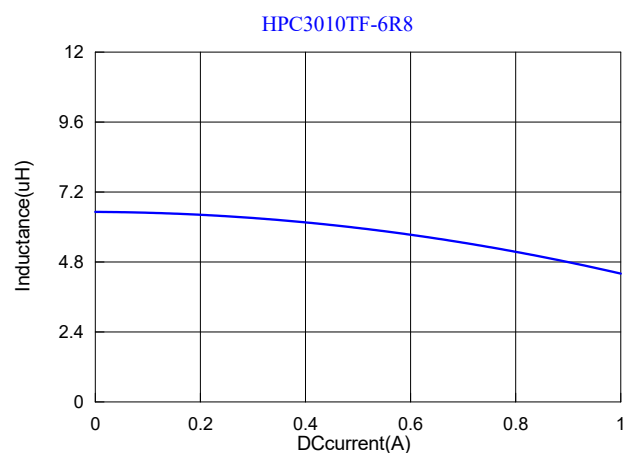
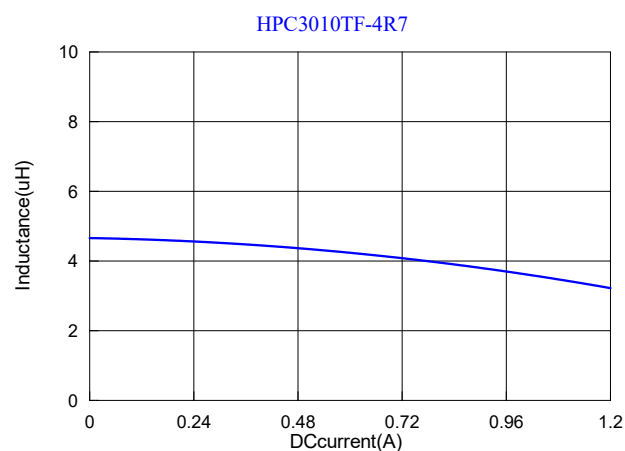
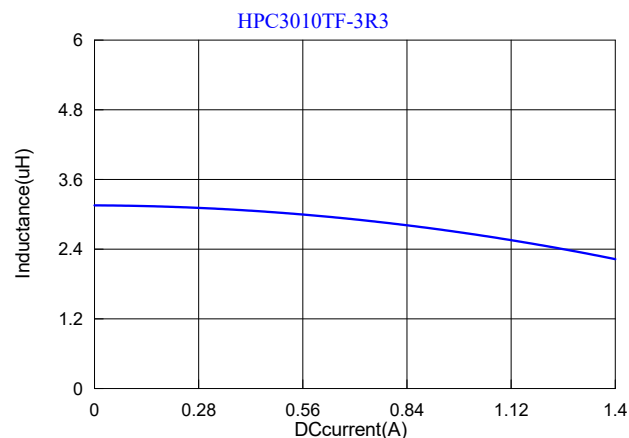
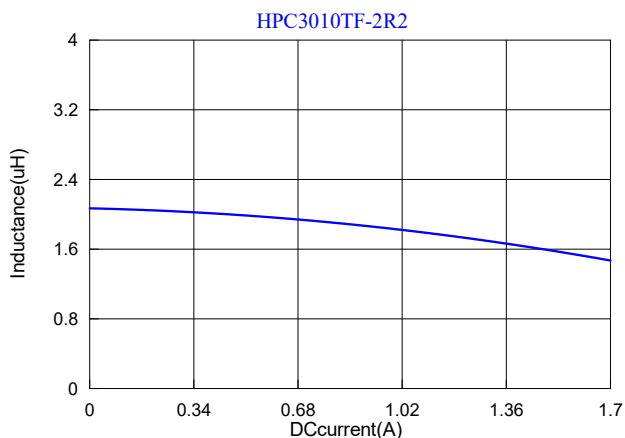
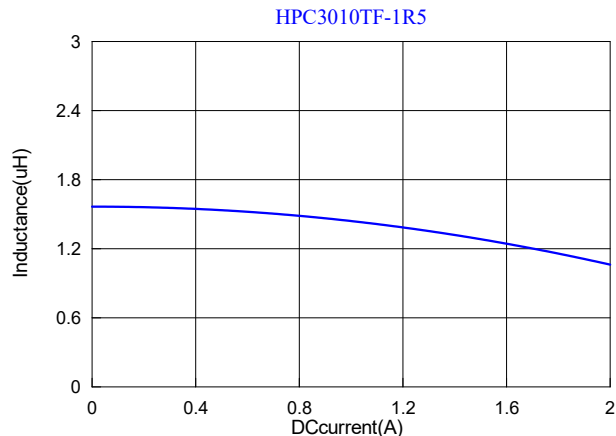
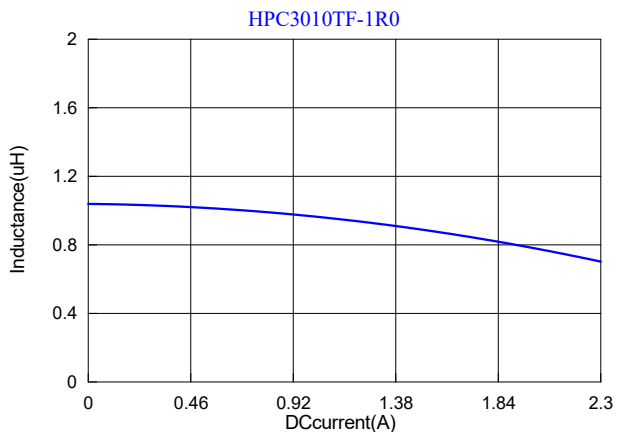
Note:

Isat : Saturation Current (Isat) will cause L0 to drop approximately 30%.

Irms : Heat Rated Current (Irms) will cause the coil temperature rise approximately ΔT of 40°C.

Rated DC Current : The less value which is Irms or Isat.

5. Typical Performance Curves



HPC3010TF-220

