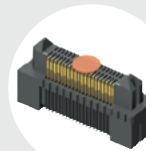
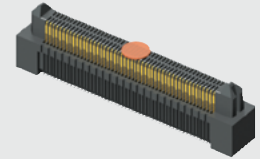


ERM5-040-02.0-L-DV-P-TR



ERM5-020-05.0-L-DV-K-TR



ERM5 SERIES

(0.50 mm) .0197"

RUGGED HIGH-SPEED HEADER

SPECIFICATIONS

For complete specifications and recommended PCB layouts see www.samtec.com?ERM5

Insulator Material:

Black LCP

Terminal Material:

Phosphor Bronze or BeCu

Plating:

Au or Sn over 50 μ" (1.27 μm) Ni

Current Rating (-DV to -DV):

1.5 A per pin (2 pins powered)

Current Rating (-DV to -RA):

1.6 A per pin (2 pins powered)

Operating Temp Range:

-55 °C to +125 °C

Voltage Rating:

194 VAC mated with ERF5

RoHS Compliant:

Yes

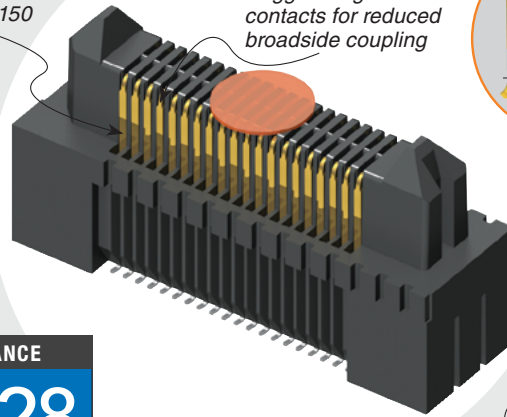
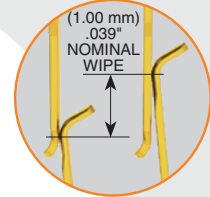
Mates with:
ERF5



- Edge Rate® contacts
- High contact wipe

20 to 150 I/Os

Rugged Edge Rate® contacts for reduced broadside coupling



7 mm, 9 mm, 10 mm, 11 mm or 12 mm stack height

HIGH-SPEED CHANNEL PERFORMANCE

ERM5/ERF5 @ 7 mm Mated Stack Height

Rating based on Samtec reference channel. For full SI performance data visit Samtec.com or contact SIG@samtec.com

28 Gbps

PROCESSING

Lead-Free Solderable:

Yes

SMT Lead Coplanarity:

(0.10 mm) .004" max (010-040)

(0.13 mm) .005" max (050-075)*

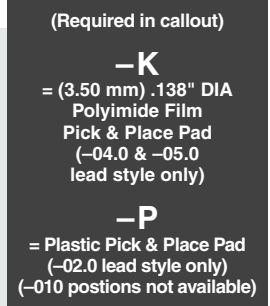
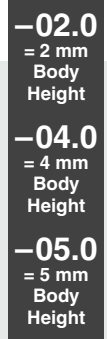
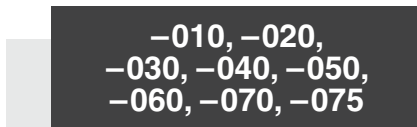
*(.004" stencil solution may be available; contact IPG@samtec.com)

RECOGNITIONS

For complete scope of recognitions see www.samtec.com/quality



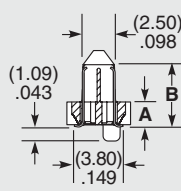
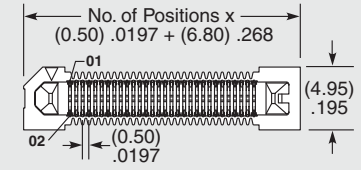
FILE NO. E111594



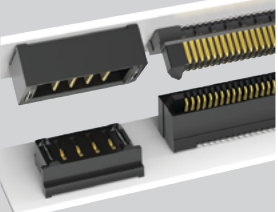
ERM5 LEAD STYLE	MATED HEIGHT*	
	ERF5 LEAD STYLE	
	-05.0	-07.0
-02.0	(7.00) .276	(9.00) .354
-04.0	(9.00) .354	(11.00) .433
-05.0	(10.00) .394	(12.00) .472

*Processing conditions will affect mated height.

LEAD STYLE	A	B
-02.0	(1.94) .076	(4.84) .191
-04.0	(3.94) .155	(6.84) .269
-05.0	(4.94) .194	(7.84) .309



POWER/SIGNAL APPLICATION



Compatible with UMP/TUMPS for flexible two-piece power/signal solutions

ALSO AVAILABLE (MOQ Required)

- Friction Lock
- Weld Tab
- Other platings

Notes:

Patented
Some lengths, styles and options are non-standard, non-returnable.

Due to technical progress, all designs, specifications and components are subject to change without notice.