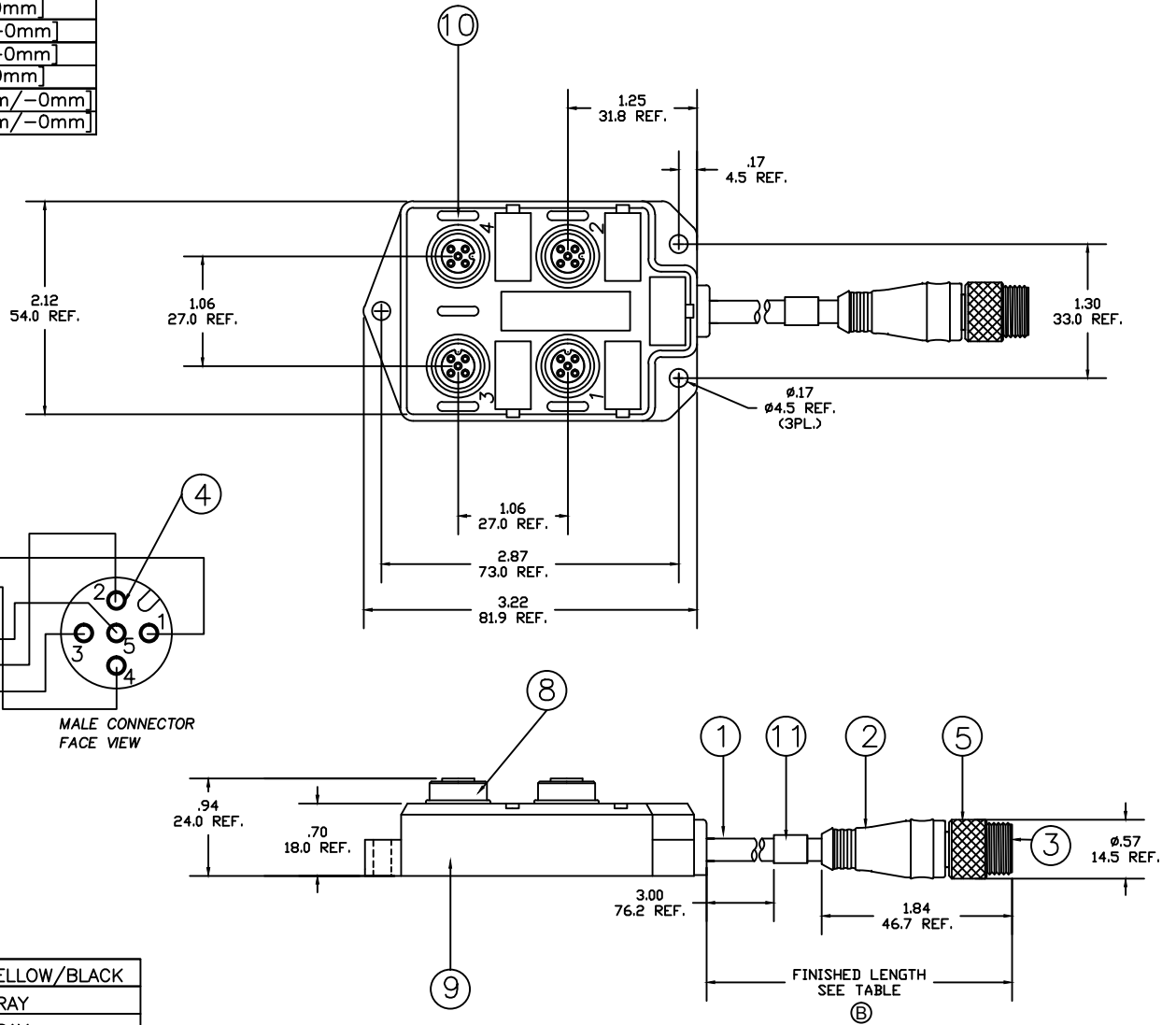
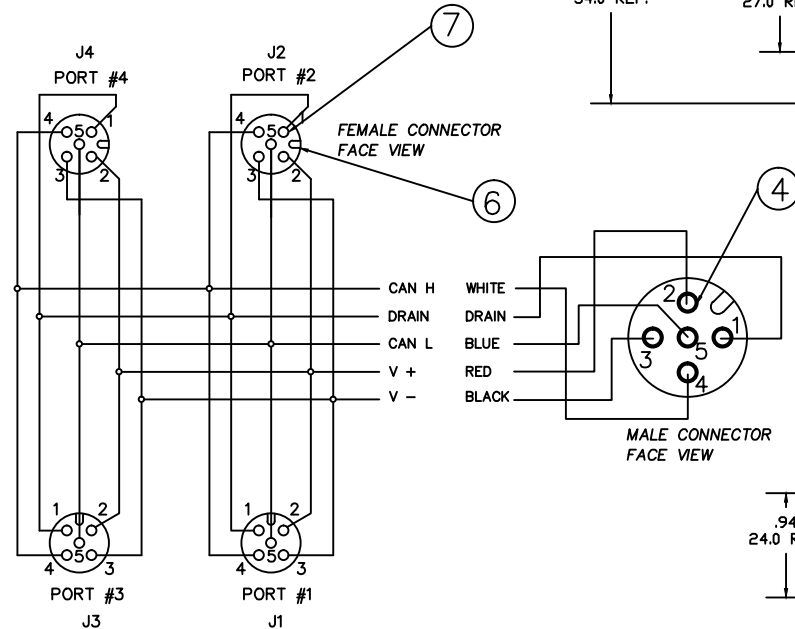


MATERIAL NO.	FINISHED LENGTH
848599001	1.6FT. +1.75IN.-0IN. [.49M+44.5mm/-0mm]
848599002	3.0FT. +2.19IN.-0IN. [.92M +55.6mm/-0mm]
848599003	6.5FT. +3.50IN.-0IN. [.98M +88.9mm/-0mm]
848599004	10.0FT. +3.50IN.-0IN. [3.05M +88.9/-0mm]
848599005	13.0FT. +6.50IN.-0IN. [3.96M +165.1mm/-0mm]
848599006	16.0FT. +6.50IN.-0IN. [4.88M +165.1mm/-0mm]

NOTE:
ASSEMBLY IS RoHS COMPLIANT



11	LABEL	VINYL	YELLOW/BLACK
10	LENS	CELANEX	GRAY
9	MPIS HOUSING	NYLON	GRAY
8	SHELL	COPPER	NICKEL PLATED
7	CONTACT SOCKET	BRASS	GOLD PLATED
6	INSERT, FEMALE	NYLON	BLACK
5	COUPLING NUT, MALE	BRASS	NICKEL PLATED
4	CONTACT PIN	BRASS	GOLD PLATED
3	INSERT, MALE	NYLON	BLACK
2	OVER MOLD	PVC	GRAY
1	CABLE DROP, DEVICE NET	PVC JACKET	LIGHT GRAY
ITEM	DESCRIPTION	MATERIAL	FINISH

CHANGE LENGTH DIM LOCATION		QUALITY SYMBOL		GENERAL TOLERANCES (UNLESS SPECIFIED)		DIMENSION STYLE		SCALE		DESIGN UNITS		THIRD ANGLE PROJECTION	
EC NO.	DATE	DRWN.	DATE	mm	INCH	IN/MM	NTS	INCH	TITLE				
PG2017-0746	2017/02/17	MZIELINS	2017/02/17	±---	±---	IN/MM	NTS	INCH	TOP MOUNT MICRO MPIS 4 GANG DEVICE NET				
CHKD.:		---		±---	±---				MOLEX INCORPORATED				
APPR:		BWOODMAN		±---	±---				SD-84859-001				
REV				±---	±---				1 OF 1				
DRAFT WHERE APPLICABLE MUST REMAIN WITHIN DIMENSIONS		MATERIAL NO.		SIZE		THIS DRAWING CONTAINS INFORMATION THAT IS PROPRIETARY TO MOLEX INCORPORATED AND SHOULD NOT BE USED WITHOUT WRITTEN PERMISSION		DOCUMENT NO.		SHEET NO.			