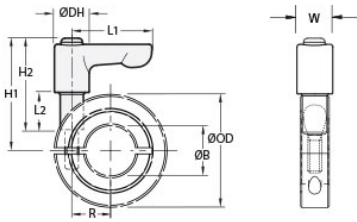




LVO-MCL-16-F

Ruland LVO-MCL-16-F, 16mm One-Piece Shaft Collar with Clamping Lever,
Steel Collar with Zinc Plated Lever, 34mm OD, 13mm Width



Description

Ruland LVO-MCL-16-F is a one-piece quick clamping shaft collar with clamping lever with a 16mm bore, 34mm OD, and 13mm width. It is made from MCL-16-F and LF30-CL-M5:15-ZS. The clamp style design does not mar the shaft, is easy to remove, and is indefinitely adjustable. The threaded stud on the lever is used in place of standard collar hardware. When combined, the two parts create a shaft collar that requires no tools to install, remove, or reposition and is ideally suited for packaging, printing, and other applications where frequent setup changes and adjustments are needed. Once the lever is installed in the shaft collar, users simply turn the lever until they meet their desired torque. The adjustable lever can be repositioned by the user without the loss of holding power by lifting the handle and twisting it 40° to lock it in a new position. This allows for use in space constrained environments where 360° rotation is not possible to fully seat the lever. MCL-16-F is made from 1215 lead-free steel with a black oxide finish. LF30-CL-M5:15-ZS has a zinc plated steel handle and stainless steel threaded stud. This material combination allows for a durable quick clamping and release component with relatively high holding power that is suitable for most industrial applications. The lever is orange for safety and ease of identification. MCL-16-F is manufactured by Ruland and LF30-CL-M5:15-ZS is manufactured by Otto Ganter. LVO-MCL-16-F is RoHS3 and REACH compliant.

Product Specifications

Bore (B)	16 mm	Bore Tolerance	+0.050 mm / +0.012 mm
Outer Diameter (OD)	34 mm	Center to Lever Top H1	35.2 mm
Width (W)	13 mm	Width Tolerance	+0.076 mm / -0.254 mm
Lever Length L1	30 mm	Lever Height H2	35 mm
Hub Diameter DH	13 mm	Sleeve Length L2	15 mm
Recommended Shaft Tolerance	+0.000 mm / -0.013 mm	Thread TH	M5
Hex Wrench Size	4.0 mm	Seating Torque	9.5 Nm
Screw Location (R)	12.50 mm	Number of Screws	1 ea
Collar Part Number	MCL-16-F	Lever Part Number	LF30-CL-M5:15-ZS-O
Collar Material	Steel	Collar Finish	Black Oxide
Handle Color	Orange	Handle Material	Zinc
Handle Finish	Powder Coated	Insert and Screw Material	303 Stainless Steel
Manufacturer	Ruland Manufacturing	Country of Origin	Shaft Collar - USA Lever - Germany
Weight (lbs)	0.210700	UPC	634529293263
Tariff Code	8483.60.8000	UNSPC	31162811
Note 1	Performance ratings are for guidance only. The user must determine suitability for a particular application.		
Prop 65	⚠️ WARNING This product can expose you to the chemical Soots, Benzene, Lead, Nickel (metallic), and Ethylene Thiourea		