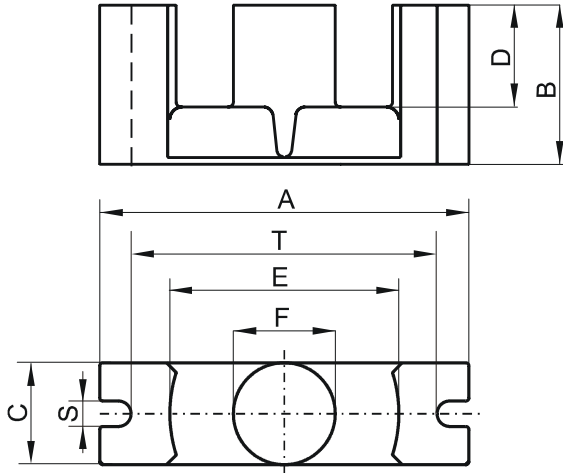


Specification for:

**0P45224EC**

110 Delta Drive  
Pittsburgh, PA 15238  
Phone: 412/696-1333  
Fax: 412/696-0333  
Email: magnetics@spang.com

**DIMENSIONS**



(mm)	Nominal:	Tol. min.:	Tol. max.:
<b>A</b>	52.2	-1.3	+ 1.3
<b>B</b>	24.2	-0.15	+ 0.15
<b>C</b>	13.4	-0.35	+ 0.35
<b>D</b>	15.9	-0.4	+ 0.4
<b>E</b>	33.0	-0.9	+ 0.9
<b>F</b>	13.4	-0.35	+ 0.35
<b>S</b>	3.75	-0.25	+ 0.25
<b>T</b>	44.0	-1.3	+ 1.3
Eff. Parameters			
Ae mm <sup>2</sup>	Amin mm <sup>2</sup>	le mm	Ve mm <sup>3</sup>
180.0	141.0	105.0	18800

**INDUCTANCE**

AL value (nH)	Test conditions
Nom: 4200 Min.: 3150	10 kHz, < 0.5 mT, 25 °C

**MARKING**

0P45224EC PXXXXX
---------------------

**CORE LOSSES**

P <sub>i</sub> max	Test conditions
128 mW/cm <sup>3</sup> (2.4 W/set)	100 kHz, 100 mT, 100 °C

**NOTE**

Spec. modifications	Previous	Revised
2005-06-22	A=53.47 Max. A=50.93 Min. C=13.73 Max. C=13.07 Min. E=32.13 Min. F=13.73 Max. F=13.07 Min. S=3.75±0.23 T=44.0±1.27 Losses: General P material	A=53.5 Max. A=50.9 Min. C=13.75 Max. C=13.05 Min. E=32.1 Min. F=13.75 Max. F=13.05 Min. S=3.75±0.25 T=44.0±1.3 Losses: Detail as indicated