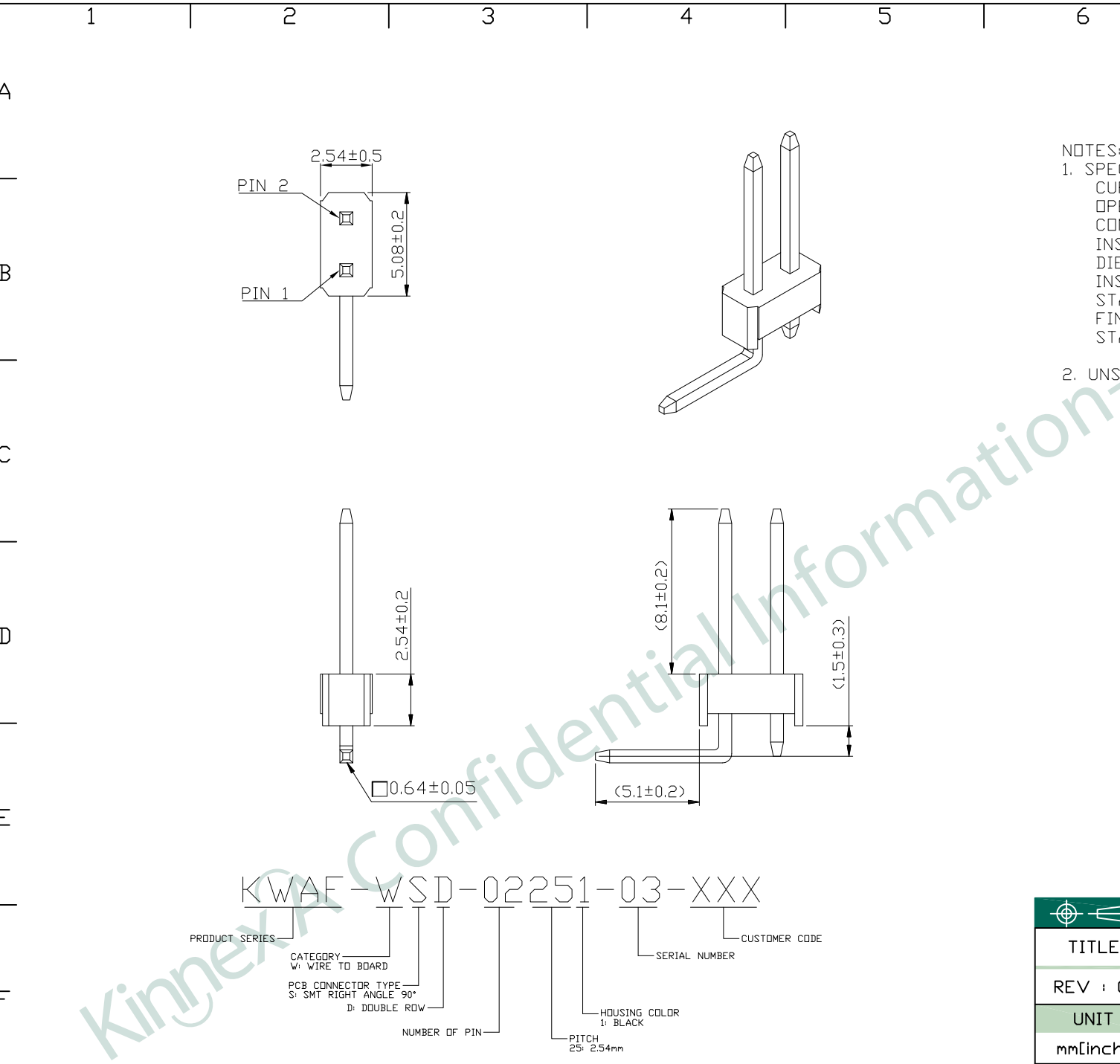


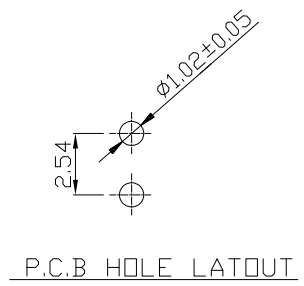
REV.	DATE	DESCRIPTION
01	May. 26, '20	1st RELEASE



NOTES:

1. SPECIFICATIONS  
 CURRENT RATING: 3Amps  
 OPERATING TEMPERATURE: -40°C ~ +105°C  
 CONTACT MATERIAL: COPPER ALLOY  
 INSULATION RESISTANCE: 5000MΩ MIN.  
 DIELECTRIC WITHSTANDING: AC 1000 V  
 INSULATOR MATERIAL: POLYESTER, UL 94V-0  
 STANDARD: P.B.T / NL-6T / LCP  
 FINISH: TIN, GOLD OR DUOLEX PLATED  
 STANDARD: GOLD FLASH ALL OVER

2. UNSPECIFIED TOLERANCE: .XX ±0.15  
 .X ±0.20



KWAF-WSD-02251-03-XXX

PRODUCT SERIES: KWAF  
 CATEGORY: W: WIRE TO BOARD  
 PCB CONNECTOR TYPE: S: SMT RIGHT ANGLE 90°  
 D: DOUBLE ROW  
 NUMBER OF PIN: 02  
 HOUSING COLOR: 1: BLACK  
 PITCH: 25: 2.54mm  
 SERIAL NUMBER: 03  
 CUSTOMER CODE: XXX

PART NO		KWAF-WSD-02251-03-XXX		
TITLE	WIRE TO BOARD, SMT RIGHT ANGLE 90°, DOUBLE ROW, PITCH=2.54mm			
REV : 01				
UNIT	DRAWN	CHKD	DATE	SHEET
mm[inch]	CINDY	VINCENT	May. 26, '20	1 of 1