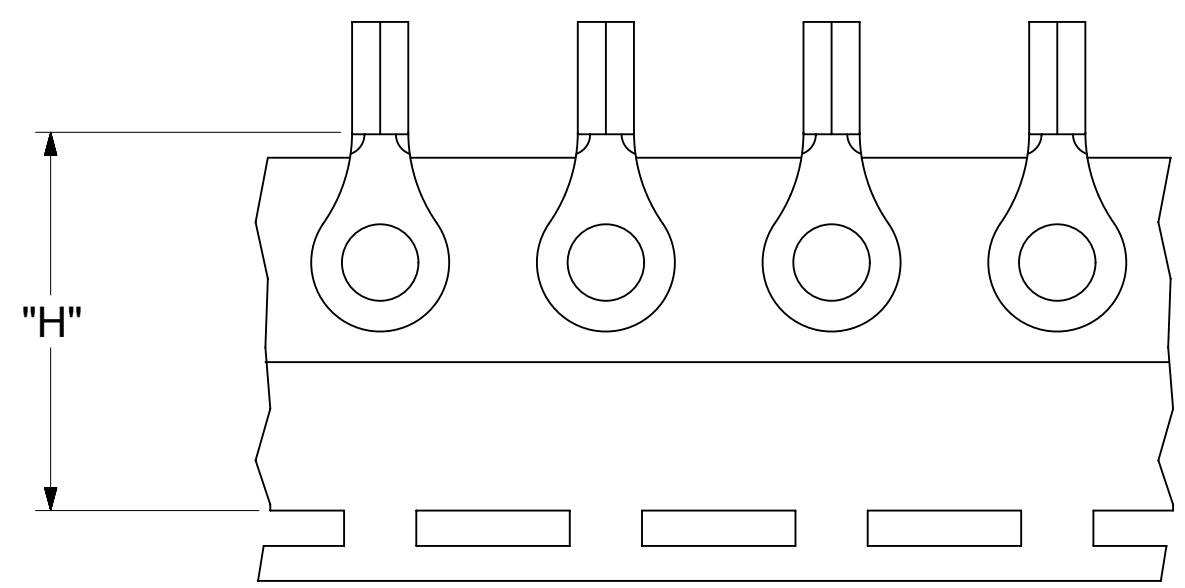
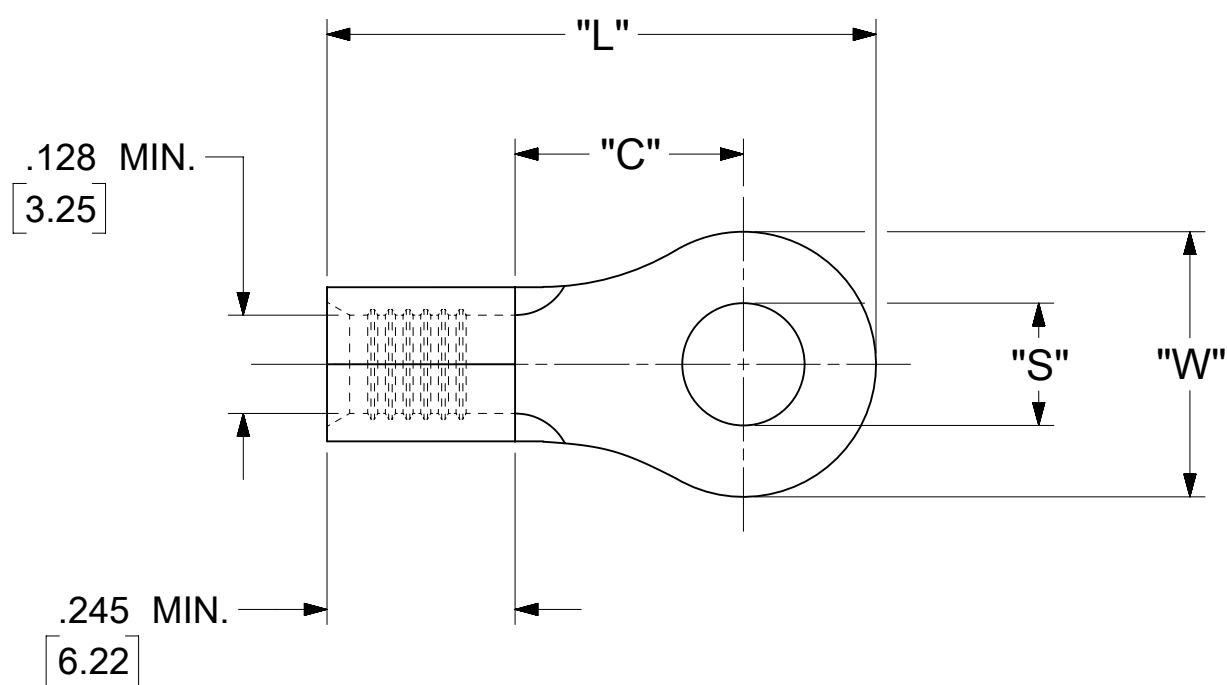


LOOSE PIECE		TAPE MOUNTED		SPECIFICATIONS					
MATERIAL NUMBER	ENGINEERING NUMBER	MATERIAL NUMBER	ENGINEERING NUMBER	STUD SIZE	"S" ±.005 [0.13]	"W" ±.010 [0.25]	"C" MIN.	"L" MAX.	"H"
190690192	C-101-12	---	---	12	.515 [13.08]	.750 [19.05]	.611 [15.52]	1.280 [32.51]	1.300 [33.02]
190690195	C-101-14	---	---	14	.265 [6.73]				
190690196	C-101-38	190690145	C-101-38T	38	.390 [9.91]				
---	---	---	---	56	.328 [8.33]				
190690198	C-101-76	190690146	C-101-76T	76	.453 [11.51]				
190690217	C-130-10	190690218	C-130-10T	10	.198 [5.03]	.530 [13.46]	.393 [9.98]	.952 [24.18]	.980 [24.89]
190690219	C-130-14	190690221	C-130-14T	14	.265 [6.73]				
---	---	---	---	38	.390 [9.91]				
190690223	C-130-56	190690225	C-130-56T	56	.328 [8.33]	.282 [7.16]	.306 [7.77]	.741 [18.82]	.980 [24.89]
---	---	---	---	4	.119 [3.02]				
190690230	C-136-06	190690232	C-136-06T	6	.146 [3.71]				
190690233	C-136-08	190690235	C-136-08T	8	.173 [4.39]				
190690236	C-140-10	---	---	10	.198 [5.03]				
190690238	C-140-14	190690240	C-140-14T	14	.265 [6.73]	.592 [15.04]	.468 [11.89]	1.056 [26.82]	1.172 [29.77]
190690241	C-140-38	190690243	C-140-38T	38	.390 [9.91]				
190690244	C-140-56	190690246	C-140-56T	56	.328 [8.33]				
---	---	---	---	209	.209 [5.31]				
---	---	---	---	413	.413 [10.50]				



PARTS ON TAPE

- NOTES:
1. MATERIAL: COPPER .040±.001 [1.02] STOCK THK.
  2. PLATING: ELECTRO-TIN (.0003 MIN).
  3. WIRE SIZE: 12-10 AWG  
4.0-6.0 MM<sup>2</sup>
  4. "UL" LISTING #E32244  
"CSA" LISTING #18689
  5. ALL DIMENSIONS IN INCHES/[MM].
  6. PARTS ARE ROHS COMPLIANT.
  7. DIMS. SHOWN ARE FOR REFERENCE ONLY.

SYMBOLS	THIS DRAWING CONTAINS INFORMATION THAT IS PROPRIETARY TO MOLEX ELECTRONIC TECHNOLOGIES, LLC AND SHOULD NOT BE USED WITHOUT WRITTEN PERMISSION			
	DIMENSION UNITS	SCALE		CURRENT REV DESC: MIGRATION TO ECTR/NX
▽ = 0	INCH/MM	NTS		EC NO: 619818 DRWN: ABENJAMINLW 2019/06/18 CHK'D: GROJAS01 2019/06/27 APPR: JMACNEIL 2019/07/10
▽ = 0	GENERAL TOLERANCES (UNLESS SPECIFIED)			
▽ = 0		MM	INCH	INITIAL REVISION: DRWN: EDWIN 1992/02/10 APPR: JMACNEIL 2019/07/10
▽ = 0	4 PLACES	±	±	
▽ = 0	3 PLACES	±	± 0.005	THIRD ANGLE PROJECTION
▽ = 0	2 PLACES	± 0.13	± 0.01	
▽ = 0	1 PLACE	± 0.25	±	DRAWING
▽ = 0	0 PLACES	±	±	SERIES
▽ = 0	ANGULAR TOL	± 0.5 °		C-SIZE
▽ = 0	DRAFT WHERE APPLICABLE MUST REMAIN WITHIN DIMENSIONS			19069
▽ = 0				

**molex**

RING TONGUE TERMINAL  
KRIMPTITE 100-SERIES

PRODUCT CUSTOMER DRAWING

DOCUMENT NUMBER	DOC TYPE	DOC PART	REVISION
190690192	PSD	000	A

MATERIAL NUMBER	CUSTOMER	SHEET NUMBER
SEE TABLE	GENERAL MARKET	1 OF 1

NOTES:  $\pm .001$

① MAT'L: COPPER (STOCK TKN  $\frac{.040}{1.02}$ )

PLATING: ELECTRO-TIN

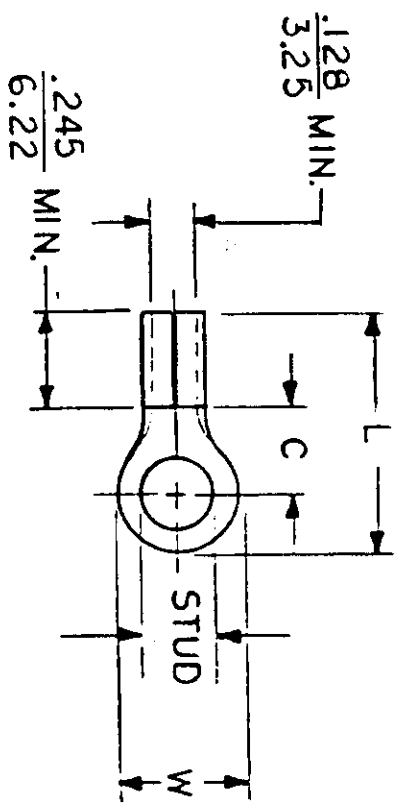
STUD SIZES: ( $\pm .005$ )

02 = .094 209 = .209  
 04 = .119 413 = .413  
 06 = .146  
 08 = .173  
 10 = .198  
 14 = .265  
 56 = .328  
 38 = .390

UL LISTING # E32244  
 CSA LISTING # 18689

ALL DIMENSIONS = INCHES  
 M M

WIRE SIZE: 12-10 AWG  
 4.0-6.0 MM<sup>2</sup>



FILE NO. C-CD-101-01

PART NUMBER	"W" ±.010	"C" MIN.	"L" MAX.	AVAILABLE STUD SIZES	REFERENCE		TITLE:	
					SCALE:	NTS	DATE	RING TONGUE TERMINAL KRIMP TITE 100-SERIES
C-101-	$\frac{.750}{19.05}$	$\frac{.611}{15.52}$	$\frac{1.280}{32.51}$	14, 56, 38, 76, 12	SCALE:	NTS	DATE	RING TONGUE TERMINAL KRIMP TITE 100-SERIES
C-128-	$\frac{.375}{9.53}$	$\frac{.303}{7.70}$	$\frac{.785}{19.94}$	04, 06, 08, 10, 209	SCALE:	NTS	DATE	RING TONGUE TERMINAL KRIMP TITE 100-SERIES
C-130-	$\frac{.530}{13.46}$	$\frac{.393}{9.98}$	$\frac{.952}{24.18}$	10, 14, 56, 38	SCALE:	NTS	DATE	RING TONGUE TERMINAL KRIMP TITE 100-SERIES
C-136-	$\frac{.282}{7.16}$	$\frac{.306}{7.77}$	$\frac{.741}{18.82}$	04, 06, 08	SCALE:	NTS	DATE	RING TONGUE TERMINAL KRIMP TITE 100-SERIES
C-140-	$\frac{.592}{15.04}$	$\frac{.468}{11.89}$	$\frac{1.056}{26.82}$	10, 14, 56, 38, 209, 413	SCALE:	NTS	DATE	RING TONGUE TERMINAL KRIMP TITE 100-SERIES
DIMENSIONAL TOLERANCES UNLESS OTHERWISE SPECIFIED					SCALE:	NTS	DATE	RING TONGUE TERMINAL KRIMP TITE 100-SERIES
FRAC. DEC. ANG.					SCALE:	NTS	DATE	RING TONGUE TERMINAL KRIMP TITE 100-SERIES
± ± ±					SCALE:	NTS	DATE	RING TONGUE TERMINAL KRIMP TITE 100-SERIES



DWG. NO. A CUSTOMER DWG.