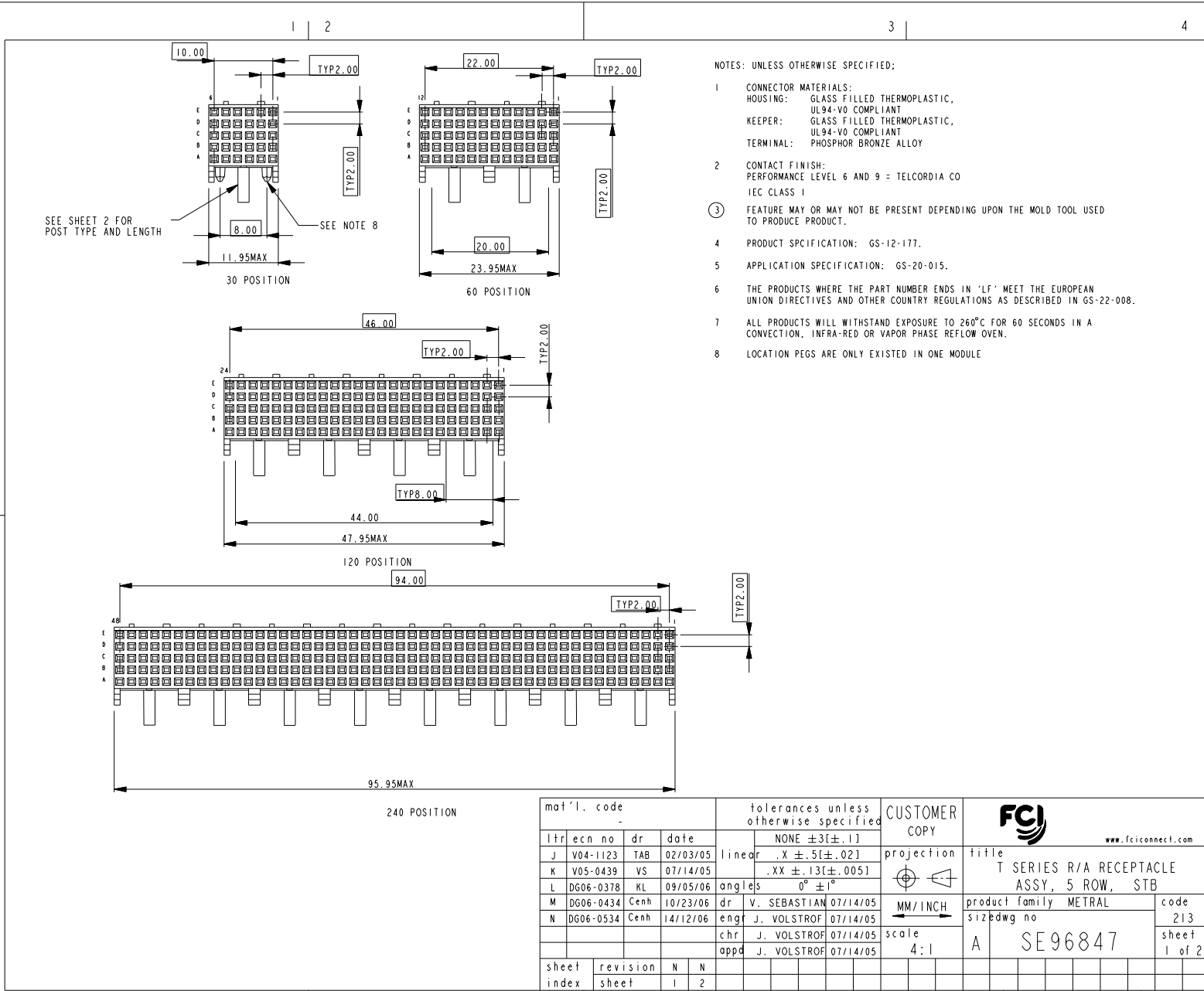


Tous droits strictement réservés. Reproduction ou communication à des tiers interdite sous quelque forme que ce soit sans autorisation écrite du propriétaire. Propriété de FCJ. Copyright FCJ.

All rights strictly reserved. Reproduction or issue to third parties in any form whatever is not permitted without written authority from the proprietor. Property of FCJ. Copyright FCJ.



- NOTES: UNLESS OTHERWISE SPECIFIED:
- CONNECTOR MATERIALS:
HOUSING: GLASS FILLED THERMOPLASTIC, UL94-V0 COMPLIANT
KEEPER: GLASS FILLED THERMOPLASTIC, UL94-V0 COMPLIANT
TERMINAL: PHOSPHOR BRONZE ALLOY
 - CONTACT FINISH:
PERFORMANCE LEVEL 6 AND 9 = TELCORDIA CO IEC CLASS I
 - FEATURE MAY OR MAY NOT BE PRESENT DEPENDING UPON THE MOLD TOOL USED TO PRODUCE PRODUCT.
 - PRODUCT SPECIFICATION: GS-12-177.
 - APPLICATION SPECIFICATION: GS-20-015.
 - THE PRODUCTS WHERE THE PART NUMBER ENDS IN 'LF' MEET THE EUROPEAN UNION DIRECTIVES AND OTHER COUNTRY REGULATIONS AS DESCRIBED IN GS-22-008.
 - ALL PRODUCTS WILL WITHSTAND EXPOSURE TO 260°C FOR 60 SECONDS IN A CONVECTION, INFRA-RED OR VAPOR PHASE REFLOW OVEN.
 - LOCATION PEGS ARE ONLY EXISTED IN ONE MODULE

mat'l. code				tolerances unless otherwise specified		CUSTOMER COPY		FCJ www.fciconnect.com	
ltr	ec'n no	dr	date	NONE ±3[±.1]	linear	.X ±.5[±.02]	projection	title	
J	V04-1123	TAB	02/03/05			.XX ±.13[±.005]		T SERIES R/A RECEPTACLE	
K	V05-0439	VS	07/14/05	angles		0° ±1°		ASSY, 5 ROW, STB	
L	DG06-0378	KL	09/05/06	dr	V. SEBASTIAN	07/14/05	MM/INCH	product family	METRAL
M	DG06-0434	Cenh	10/23/06	engr	J. VOLSTROF	07/14/05	scale	size	dwg no
N	DG06-0534	Cenh	14/12/06	chr	J. VOLSTROF	07/14/05	4:1	A	SE96847
				appd	J. VOLSTROF	07/14/05			
sheet index	revision sheet	N 1	N 2						

ACAD

cage code
22526

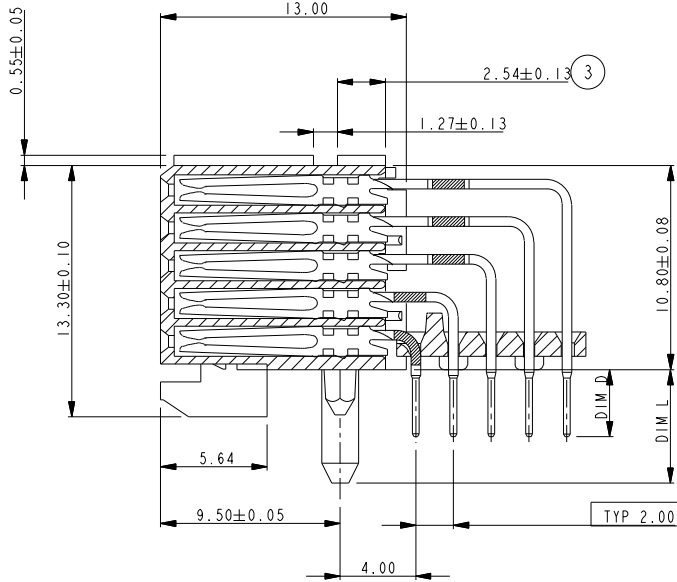
PDM: Rev:N

STATUS Released

Printed: Apr 18, 2008

Tous droits strictement réservés. Reproduction ou communication à des tiers interdite sous quelque forme que ce soit sans autorisation écrite du propriétaire. Propriété de © FCI. - Droits de reproduction FCI.

All rights strictly reserved. Reproduction or issue to third parties in any form whatever is not permitted without written authority from the proprietor. Property of FCI. - Copyright FCI.



	PCB THICKNESS	DIM D	DIM L	RETENTION FEATURES
HMI F 5_ T A R 000 H6	1.60	2.90±0.30	5.20	HEAT STAKE PEGS
HMI F 5_ T B R 000 H6	2.40	3.60±0.30		
HMI F 5_ T A P 000 H6	1.60	2.90±0.30	3.00	PRESS-FIT PEGS
HMI F 5_ T B P 000 H6	2.40	3.60±0.30		

CATALOG NUMBER DESCRIPTION

PRODUCT FAMILY
HMI = METRAL HMI

PRODUCT TYPE
F = FEMALE SIGNAL, RIGHT ANGLE

NUMBER OF ROWS
5 = 5 ROW

BOARD LENGTH
1 = 12.00 (30 POSITION SIGNAL)
2 = 24.00 (60 POSITION SIGNAL)
3 = 48.00 (120 POSITION SIGNAL)
4 = 96.00 (240 POSITION SIGNAL)

MATING CONTACT
T = TWISTED FEMALE

PCB TERMINATION TYPE
A = SOLDER TAIL, FOR 1.6mm PCB
B = SOLDER TAIL, FOR 2.4mm PCB

LF = LEAD FREE Sn PLATING ON TAILS
- = SnPb PLATING ON TAILS

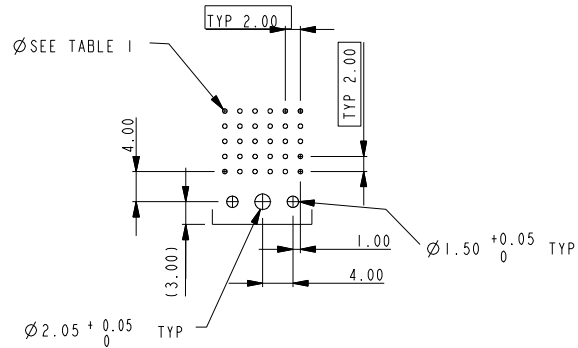
P = PACKAGED IN TRAYS
- = PACKAGED IN TUBES

PERFORMANCE LEVEL
6 = 125 DAYS OPERATION + 10 DAYS MIXED GAS + 125 DAYS OPERATION
9 = 125 DAYS OPERATION + 10 DAYS MIXED GAS + 125 DAYS OPERATION

INSULATING MATERIAL
H = HIGH TEMPERATURE MATERIAL

VARIATIONS
000 = STANDARD

BOARD ATTACHMENT
R = HEAT STAKE RETENTION PEG
P = PRESS-FIT RETENTION PEG



RECOMMENDED PC BOARD LAYOUT, COMPONENT SIDE
SEE PRINT 58351 FOR ADDITIONAL PCB INFORMATION

mat'l. code				tolerances unless otherwise specified				CUSTOMER COPY		FCI		www.fciconnect.com	
lfr	ecn	no	dr	date	NONE	±3[±.1]	linear	.X ±.5[±.02]	projection	title			
N								.XX ±.13[±.005]	MM/INCH	T SERIES R/A RECEPTACLE ASSY, 5 ROW, STB			
					angles	0° ±1°	dr	V. SEBASTIAN 07/14/05	MM/INCH	product family METRAL			code
					engr	J. VOLSTROF 07/14/05	chr	J. VOLSTROF 07/14/05	scale	size			213
					appd	J. VOLSTROF 07/14/05	appd	J. VOLSTROF 07/14/05	4:1	dwg no			sheet
sheet index	revision	sheet								A SE96847			2 of 2
										cage code			
										22526			

ACAD

PDM: Rev:N

STATUS Released

Printed: Apr 18, 2008