

10 9 8 7 6 5 4 3 2 1

F

E

D

C

B

A

F

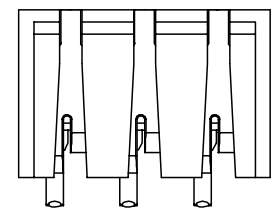
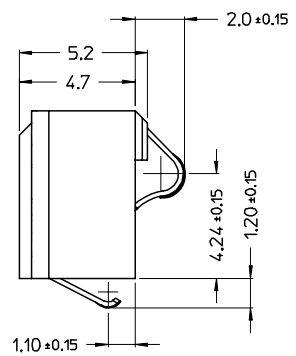
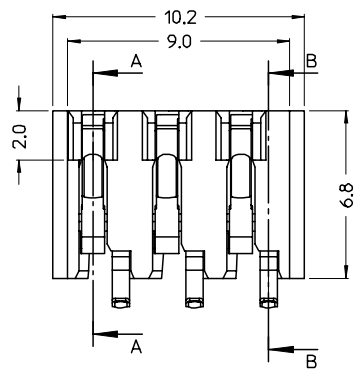
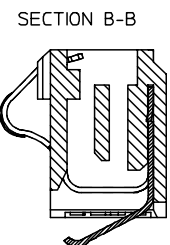
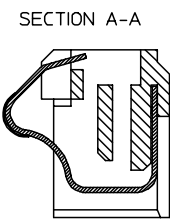
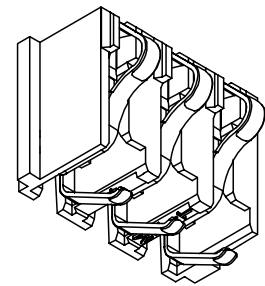
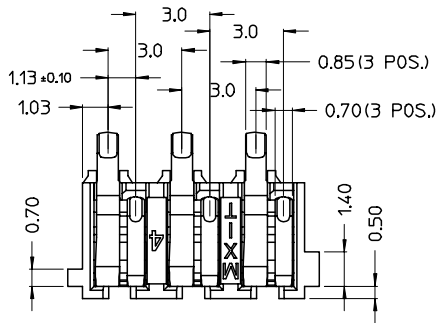
E

D

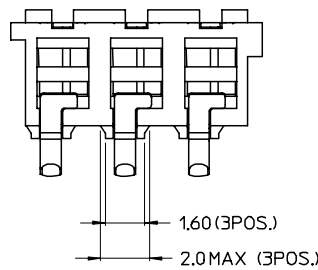
C

B

A



PROPOSED P.CBOARD LAYOUT
COMPONENT SIDE



MATERIALS:
 - HOUSING: BLACK PBT GF 30%
 - CONTACTS: PhBz CuSn 8 (C521) 0.20mm THICK
 - PLATING:
 BATTERY SIDE - 1.34µm MIN Au OVER
 1.27µm MIN Ni
 PCB SIDE - 1.34µm MIN Au OVER
 1.27µm MIN Ni

NOTES:
 1. CONTACT NORMAL FORCE:
 BATTERY SIDE 1.45±0.15N AT 0.8mm DEFLECTION
 PCB SIDE 1.25±0.15N AT 0.8mm DEFLECTION
 2. PACKAGING: CARRIER TUBES SEE
 DWG. PK-94345-002
 S.P.Q.=17,172 PCS
 3. OTHER PRODUCT CHARACTERISTICS
 ACCORDING TO PS-94345-001

STD. DESCR. "BATTERY CONN DOUBLE COMPR R/A 3 CKT"

EC NO: Z2004-0061 DRWN: GZUIN 2004/02/05 CHKD: RSANDANO 2004/02/05 APPR: FBISELLO 2004/02/06	QUALITY SYMBOLS	GENERAL TOLERANCES (UNLESS SPECIFIED)	SCALE 5:1	DESIGN UNITS METRIC	FIRST ANGLE PROJECTION	REVISE ON CAD ONLY																															
	▽ = 0 ∇ = 0	<table border="1"> <thead> <tr> <th></th> <th>mm</th> <th>INCH</th> </tr> </thead> <tbody> <tr> <td>4 PLACES</td> <td>± ---</td> <td>± ---</td> </tr> <tr> <td>3 PLACES</td> <td>± ---</td> <td>± ---</td> </tr> <tr> <td>2 PLACES</td> <td>± 0.05</td> <td>± ---</td> </tr> <tr> <td>1 PLACE</td> <td>± 0.10</td> <td>± ---</td> </tr> </tbody> </table>		mm	INCH	4 PLACES	± ---	± ---	3 PLACES	± ---	± ---	2 PLACES	± 0.05	± ---	1 PLACE	± 0.10	± ---	<table border="1"> <thead> <tr> <th colspan="2">DIMENSION STYLE</th> </tr> <tr> <th>mm</th> <th>ONLY</th> </tr> </thead> <tbody> <tr> <td>DRAWN BY</td> <td>DATE</td> </tr> <tr> <td>GZUIN</td> <td>03/11/14</td> </tr> <tr> <td>CHECKED BY</td> <td>DATE</td> </tr> <tr> <td>RSANDANO</td> <td>03/11/14</td> </tr> <tr> <td>APPROVED BY</td> <td>DATE</td> </tr> <tr> <td>FBISELLO</td> <td>03/11/14</td> </tr> </tbody> </table>	DIMENSION STYLE		mm	ONLY	DRAWN BY	DATE	GZUIN	03/11/14	CHECKED BY	DATE	RSANDANO	03/11/14	APPROVED BY	DATE	FBISELLO	03/11/14	TITLE	R/A BATTERY CONN. 3CKT (DOUBLE COMPRESSION)	
			mm	INCH																																	
		4 PLACES	± ---	± ---																																	
3 PLACES	± ---	± ---																																			
2 PLACES	± 0.05	± ---																																			
1 PLACE	± 0.10	± ---																																			
DIMENSION STYLE																																					
mm	ONLY																																				
DRAWN BY	DATE																																				
GZUIN	03/11/14																																				
CHECKED BY	DATE																																				
RSANDANO	03/11/14																																				
APPROVED BY	DATE																																				
FBISELLO	03/11/14																																				
1	DESCRIPTION	DRAFT WHERE APPLICABLE	APPROVED BY	DATE	MATERIAL NO.	DOCUMENT NO.	SHEET NO.																														
	REV	MUST REMAIN WITHIN DIMENSIONS	FBISELLO	03/11/14	94345-0203	SD-94345-002	1 OF 1																														

A3