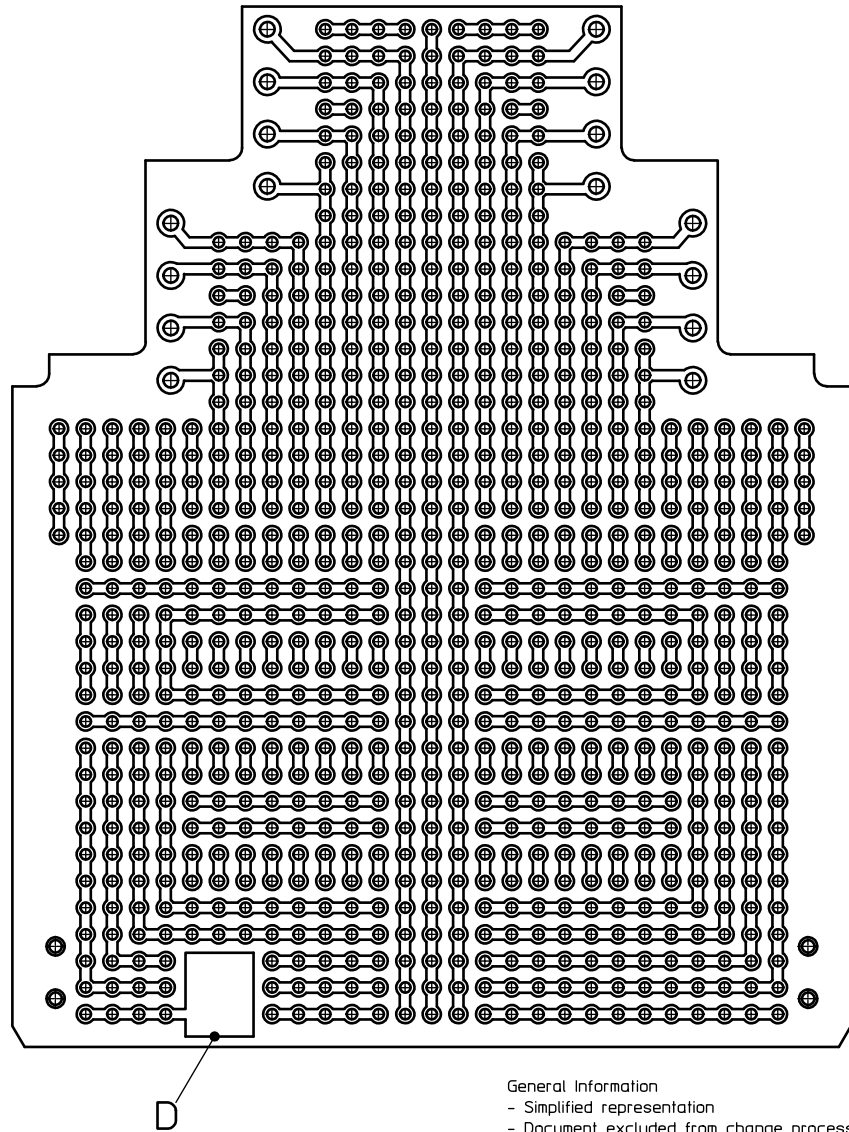
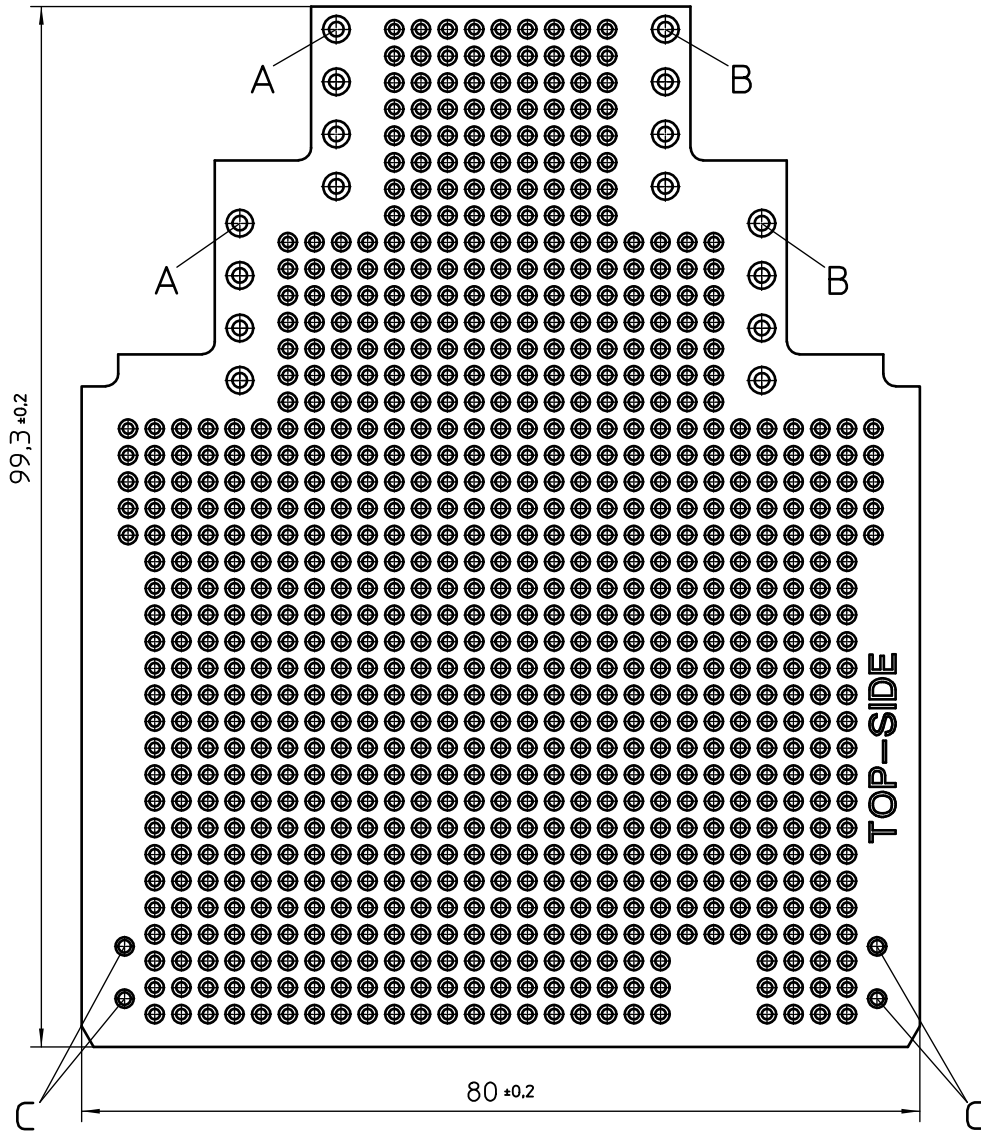


Transfer or duplication of this document as well as the utilisation or communication of its content are not permitted unless express consent is granted. Violations give rise to claims for damages. All rights reserved in case of patent, utility model or design patent registrations.

Weitergabe sowie Vervielfältigung dieses Dokuments, Verwertung und Mitteilung seines Inhalts sind verboten, soweit nicht ausdrücklich gestattet. Zuwiderhandlungen verpflichten zu Schadensersatz. Alle Rechte für den Fall der Patent-, Gebrauchsmuster- oder Designeintragung vorbehalten.



Width (w)	ME (w) OT-MSTBO	ME (w) OT(U)-MKDSO	ME (w) OT-FKDSO
12,5	MSTBO 2,5/ 2G1L MSTBO 2,5/ 2G1R	MKDSO 2,5/ 2-L MKDSO 2,5/ 2-R	FKDSO 2,5/ 2-L FKDSO 2,5/ 2-R
17,5(35)	MSTBO 2,5/ 3G1L MSTBO 2,5/ 3G1R	MKDSO 2,5/ 3-L MKDSO 2,5/ 3-R	FKDSO 2,5/ 3-L FKDSO 2,5/ 3-R
22,5(45/67,5/90)	MSTBO 2,5/ 4G1L MSTBO 2,5/ 4G1R	MKDSO 2,5/ 4-L MKDSO 2,5/ 4-R	FKDSO 2,5/ 3-L FKDSO 2,5/ 3-R

Product	Component
MSTBO	Header
MKDSO	Screw Terminal
FKDSO	Push In Terminal
ME ... UT(G)	ME Housing Bottom Part
ME ... OT...	ME Housing Upper Part

- General Information
- Simplified representation
 - Document excluded from change process
 - CAD Data see Download-Center on www.phoenixcontact.com
 - Linear dimensions [mm]
 - Dot matrix pitch: 2,54mm, drill size: $\varnothing 1$
 - Thickness: 1,6±0,2
 - PCB for ME 12,5/17,5/22,5/67,5/90 UT(G)
- Terminal area for:
- A) Left side for terminal/header (L)
 - B) Right side for terminal/header (R)
 - C) Through hole plated for PCB stop
 - D) Pad for FE CONTACT, surface: Sn

	document-No. / RI	date	scale
	00777580 / 01	02.04.2015	2:1
	ident.-No.	document-type	
	-----	PCB outline	
description			
ME PCB 2-2 MKDSO/MSTBO DOT MATRIX			
page 1	of 1		