

THIS DRAWING IS UNPUBLISHED. RELEASED FOR PUBLICATION 20
 © COPYRIGHT 20 BY - ALL RIGHTS RESERVED.

REVISIONS

P	LTR	DESCRIPTION	DATE	DWN	APVD
B2		PART 2-284042-2 ADDED	19FEB2019	RK	PS

NOTES:

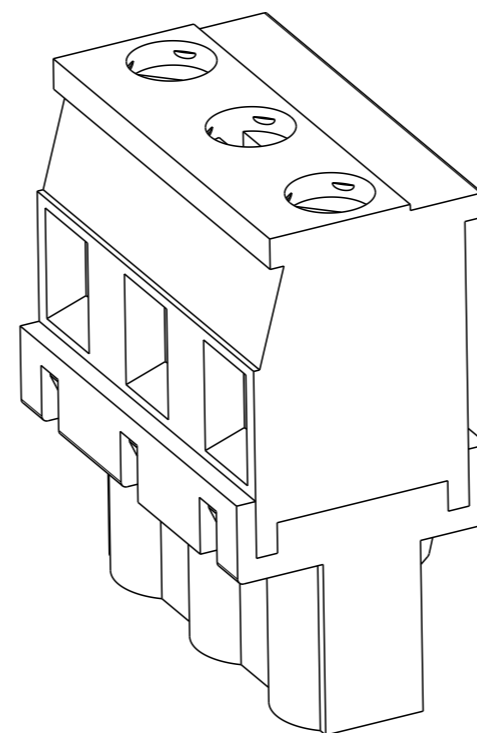
- MATERIALS & FINISH
 HOUSING : PA6.6 , UL94 V0, COLOUR -GREEN
 SCREW M3 : COPPER ALLOY, NICKEL PLATED
 CLAMP : COPPER ALLOY, NICKEL PLATED
 CONTACT : COPPER ALLOY, TIN PLATED
- MECHANICAL
 RECOMMENDED TIGHTENING TORQUE : 0.5 Nm
 WIRE STRIPPING LENGTH : 6 - 7.5 mm
 INSERTION FORCE PER POLE : MAX 3 N
 WITHDRAWAL FORCE PER POLE : MIN 1.5 N
- ELECTRICAL
 WIRE RANGE : 12-30 AWG
 VOLTAGE RATING : 300 V
 CURRENT RATING : 15 A
 CONTACT RESISTANCE : <15 m Ohm
 INSULATION RESISTANCE : >1000 M Ohm (500V DC)

4. OPERATING TEMPERATURE BETWEEN -40°C TO +105°C

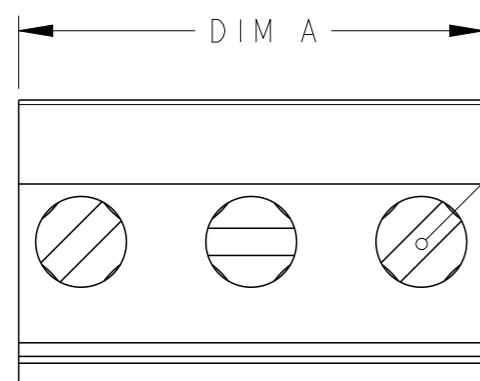
5 TOLERANCE NOT CUMULATIVE

6 PRELIMINARY - NOT RELEASED FOR PRODUCTION

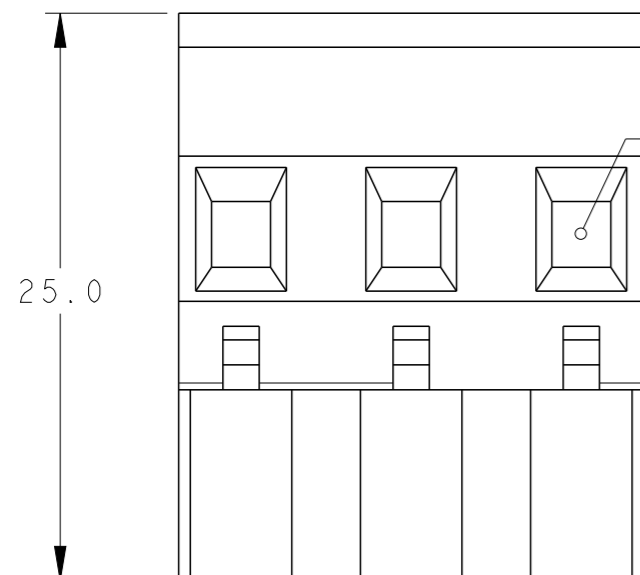
DIM. A	NO OF POS.	PART NUMBER
13.0	2	2-284042-2
88.0	12	1-284042-2
80.5	11	1-284042-1
73.0	10	1-284042-0
65.5	9	284042-9
58.0	8	284042-8
50.5	7	284042-7
43.0	6	284042-6
35.5	5	284042-5
28.0	4	284042-4
20.5	3	284042-3
13.0	2	284042-2



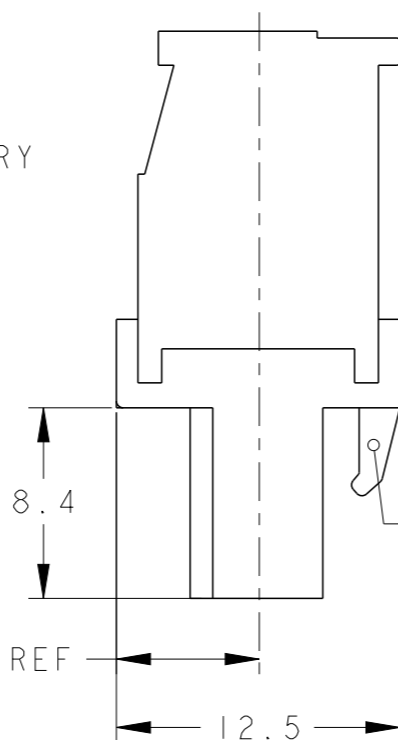
284042-3 AS SHOWN



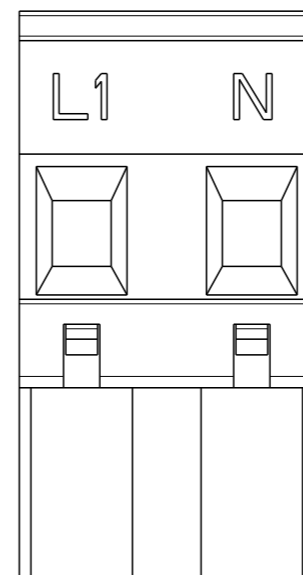
CLAMPING SCREW



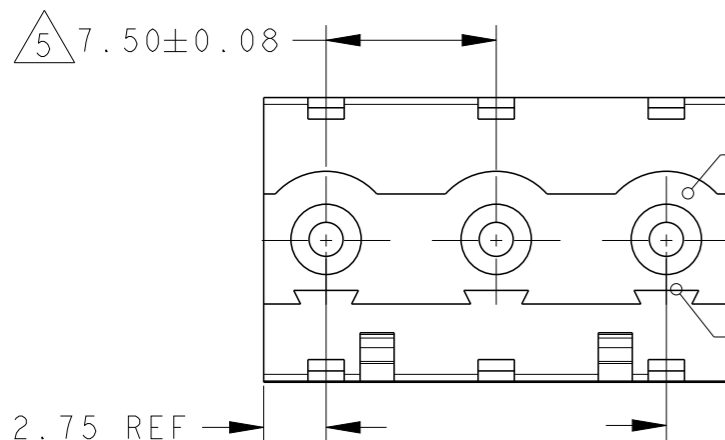
WIRE ENTRY



RETENTION LATCH



2-284042-2 AS SHOWN

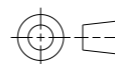


MATING FACE

POLARIZED KEY SLOT

THIS DRAWING IS A CONTROLLED DOCUMENT.

DIMENSIONS: mm



MATERIAL SEE NOTES

TOLERANCES UNLESS OTHERWISE SPECIFIED:

0 PLC	±0.2
1 PLC	±0.15
2 PLC	±0.15
3 PLC	±0.15
4 PLC	±0.15
ANGLES	±2°

FINISH SEE NOTES

DWN 03JAN2002

E. ZANOLINI

CHK 03JAN2002

E. ZANOLINI

APVD 03JAN2002

D. BIEVENOUR

PRODUCT SPEC

APPLICATION SPEC

WEIGHT -

CUSTOMER DRAWING

NAME
 TERMINAL BLOCK VERTICAL PLUG
 STACKING, LEFT HAND
 7.5mm PITCH

SIZE A300779 CAGE CODE G-284042 DRAWING NO RESTRICTED TO

SCALE 3:1 SHEET 1 OF 1 REV B2

