

| PART NUMBER | REVISION | DESCRIPTION | FEED TYPE |
|-------------|----------|----------------------------------|------------|
| 2151498-1 | C | FINE CRIMP HEIGHT ADJUST | MECHANICAL |
| 2151498-2 | C | FINE CRIMP HEIGHT ADJUST | PNEUMATIC |
| 7-2151498-1 | C | MECHANICAL AND CRIMP TOOLING KIT | MECHANICAL |
| 7-2151498-2 | C | PNEUMATIC AND CRIMP TOOLING KIT | PNEUMATIC |
| 7-2151498-7 | A | CRIMP TOOLING KIT | - |

ATLANTIC VERSION TERMINATOR INTERFACE ADAPTER

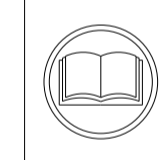


| APPLICATOR DATA | | |
|-----------------|------------------|------|
| CRIMP | SIZE | TYPE |
| WIRE | 5.33mm [.210 IN] | F |
| INSUL | - | - |

APPLICATOR INSTRUCTIONS
408-35042

| TERMINAL DATA: TE TERMINAL | | TE CRIMP SPECIFICATION | |
|------------------------------------|-------------|---------------------------|-------------|
| TERMINAL NAME: TERMINAL, RING | | | |
| WIRE STRIP LENGTH | | INSULATION DIAMETER RANGE | |
| 6.35 mm [.250 IN] | | | |
| TERMINAL APPLICATION SPECIFICATION | 114-2084 | | |
| TERMINALS APPLIED | | | |
| TE TERMINAL | TE TERMINAL | TE TERMINAL | TE TERMINAL |
| 41356 | 41341 | | |

| WIRE SIZE | CRIMP HEIGHT INCH [mm] | CRIMP HEIGHT REFERENCE SETTING |
|-----------|---------------------------------|--------------------------------|
| 10 AWG | 3.38 +/- 0.05 [0.133 +/- 0.002] | 8.5 |
| 12 AWG | 3.07 +/- 0.05 [0.121 +/- 0.002] | 12.4 |



- 1. RECOMMENDED SPARE PARTS
- 2. REFER TO SUPPLIED INSTRUCTION SHEET FOR CLEANING, LUBRICATION AND STORAGE OF APPLICATOR.
- 3. CRIMP HEIGHT REFERENCE SETTING WAS THE SETTING USED WHEN THE APPLICATOR WAS QUALIFIED AT THE FACTORY. ADJUSTMENT MAY BE NECESSARY WHEN RUNNING APPLICATOR IN THE FIELD.
- 4. UNLESS SPECIFIED OTHERWISE TORQUE VALUES SHALL BE USED PER DOCUMENT, 101-35000.

***WARNING**
ON INSTALLATION, SET WIRE DISC TO CRIMP HEIGHT REFERENCE SETTING FOR LARGEST WIRE SIZE. CRIMP HEIGHT REFERENCE SETTINGS GREATER THAN THE VALUE SHOWN MAY CAUSE DAMAGE TO THE CRIMP TOOLING. REFER TO THE INSTRUCTION SHEET FOR PROPER SETUP AND ADJUSTMENTS.

ATLANTIC VERSION
Shown on sheets 1 of 4 & 2 of 4
(Pacific version shown on sheets 3 of 4 & 4 of 4)

| LOC | DIST | REVISIONS | | | | | |
|-----|------|-----------|-----|---------------|-----------|-----|------|
| A | 66 | P | LTN | DESCRIPTION | DATE | DWN | APVD |
| | | A | | RELEASED | 30APR2012 | BW | GB |
| | | B | | ECR-21-113617 | 14SEP2021 | JWC | TE |
| | | C | | ECR-22-126487 | 13JAN2022 | FJ | TE |

| | | | | | | | |
|---|-----|-----|-----|-----|-------------|----------------------------------|---------|
| - | 1 | - | 1 | - | 2119641-1 | FEED CAM, AIR FEED | 248 |
| - | - | 1 | - | 1 | 2119580-1 | MECHANICAL FEED ASSEMBLY | 239 |
| - | 1 | - | 1 | - | 2844940-1 | AIR FEED MODULE | 238 |
| - | 1 | 1 | 1 | 1 | 1673019-1 | BLADE, SLUG | 232 |
| - | 1 | 1 | 1 | 1 | 993111-1 | PIN, SLOTTED SPRING 3.0 X 20.0 | 177 |
| - | REF | REF | REF | REF | 994970-2 | COUNTER, MAGNETIC | 164 |
| - | 1 | 1 | 1 | 1 | 2844908-1 | SCREW, LOCKING | 99 |
| - | 1 | 1 | 1 | 1 | 2844907-1 | POST, LOCKING | 98 |
| - | 1 | 1 | 1 | 1 | 455888-5 | SPACER, CRIMPER | 82 |
| - | 1 | 1 | 1 | 1 | 1803607-3 | DOCUMENTATION PACKAGE | 71 |
| - | 1 | 1 | 1 | 1 | 2119740-1 | TAG, IDENTIFICATION | 67 |
| - | 2 | 2 | 2 | 2 | 2168078-1 | SCREW, DRIVE, RH, RoHS, 2 x .188 | 66 |
| - | 1 | 1 | 1 | 1 | 2168083-2 | SCR, SKT HD CAP, RoHS, M4 X 8.0 | 60 |
| - | 1 | 1 | 1 | 1 | 5-18022-5 | SCR, HEX HD CAP, M4 X 6.0 | 59 |
| - | 1 | 1 | 1 | 1 | 1338683-1 | FEED PAWL | 56 |
| - | 2 | 2 | 2 | 2 | 1-22284-0 | SPRING, COMPRESSION | 52 |
| - | 1 | 1 | 1 | 1 | 1-22281-8 | SPRING, COMPRESSION | 51 |
| - | 1 | 1 | 1 | 1 | 2168083-6 | SCR, SKT HD CAP, RoHS, M5 X 6.5 | 50 |
| - | 1 | 2 | 1 | 2 | 18023-9 | SCR, SKT HD CAP M4 X 6.0 | 49 |
| - | - | 1 | - | 1 | 2119652-1 | FEED CAM, PRE FEED | 48 |
| - | - | 1 | - | 1 | 2119653-1 | FEED CAM, POST FEED | 47 |
| - | 1 | 1 | 1 | 1 | 1803583-9 | APPLICATOR BASIC ASSEMBLY, SF | 46 |
| - | 2 | 2 | 2 | 2 | 2168083-9 | SCR, SKT HD CAP, RoHS, M4 X 20 | 45 |
| - | 1 | 1 | 1 | 1 | 1803515-1 | RAM ASSEMBLY, SF ATLANTIC | 44 |
| - | 1 | 1 | 1 | 1 | 1-18023-1 | SCR, SKT HD CAP M4 X 10.0 | 43 |
| - | 1 | 1 | 1 | 1 | 980371-4 | SCR, SKT HD SHLDR 5.0 DIA X 6.0 | 42 |
| - | 1 | 1 | 1 | 1 | 1803602-1 | SCR, BHSC, RoHS (M8 X 25) | 41 |
| - | 2 | 2 | 2 | 2 | 2168083-2 | SCR, SKT HD CAP, RoHS, M4 X 8.0 | 36 |
| - | 2 | 2 | 2 | 2 | 18023-5 | SCR, SKT HD CAP M3 X 12.0 | 34 |
| - | 2 | 2 | 2 | 2 | 2168083-1 | SCR, SKT HD CAP, RoHS, M3 X 8.0 | 33 |
| - | 2 | 2 | 2 | 2 | 2-18032-5 | SCR, SET, FLT PNT, M5 X 20.0 | 31 |
| - | 1 | 1 | 1 | 1 | 2844938-1 | PLATE, STRIP GUIDE | 29 |
| - | 1 | 1 | 1 | 1 | 356835-1 | LEVER, DRAG RELEASE | 27 |
| - | 1 | 1 | 1 | 1 | 2119924-2 | SHEAR, LOWER | 22 |
| - | 1 | 1 | 1 | 1 | 2168083-2 | SCR, SKT HD CAP, RoHS, M4 X 8.0 | 21 |
| - | 1 | 1 | 1 | 1 | 1-18028-2 | WASHER, FLAT, REG M4 | 20 |
| - | 1 | 1 | 1 | 1 | 2119533-1 | STRIPPER, SIDE FEED | 19 |
| - | 1 | 1 | 1 | 1 | 1-2119928-6 | FENCE | 12 |
| - | 1 | 1 | 1 | 1 | 2119830-2 | HOLDER, SLUG BLADE | 11 |
| 1 | 2 | 2 | 1 | 1 | 2119923-1 | ANVIL, SPECIAL | 8 |
| - | 1 | 1 | 1 | 1 | 3-690754-6 | DRAG, SPECIAL | 7 |
| - | 1 | 1 | 1 | 1 | 1-679651-9 | FRONT STRIP GUIDE | 6 |
| 1 | 2 | 2 | 1 | 1 | 9-568176-6 | CRIMPER, WIRE | 1 |
| - | 77 | -72 | -71 | -2 | -1 | PART NO | ITEM NO |

| | | | | | | | |
|--|---------|--|---------|---------|---------|-------|--------|
| DIMENSIONS: | | TOLERANCES UNLESS OTHERWISE SPECIFIED: | | OWN | | DATE | |
| mm | 0 PLC ± | 1 PLC ± | 2 PLC ± | 3 PLC ± | 4 PLC ± | APVD | CHK |
| | ANGLES | FINISH | | APVD | CHK | DATE | DATE |
| MATERIAL | | | | APVD | CHK | DATE | DATE |
| Customer Accessible Production Drawing | | | | SCALE | 1:2 | SHEET | 1 OF 4 |
| Customer Accessible Production Drawing | | | | SCALE | 1:2 | SHEET | 1 OF 4 |

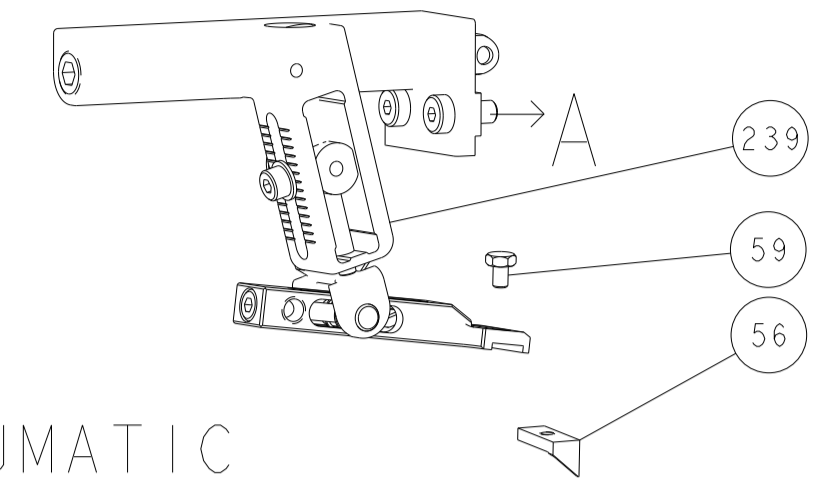


Ocean Side Feed Applicator

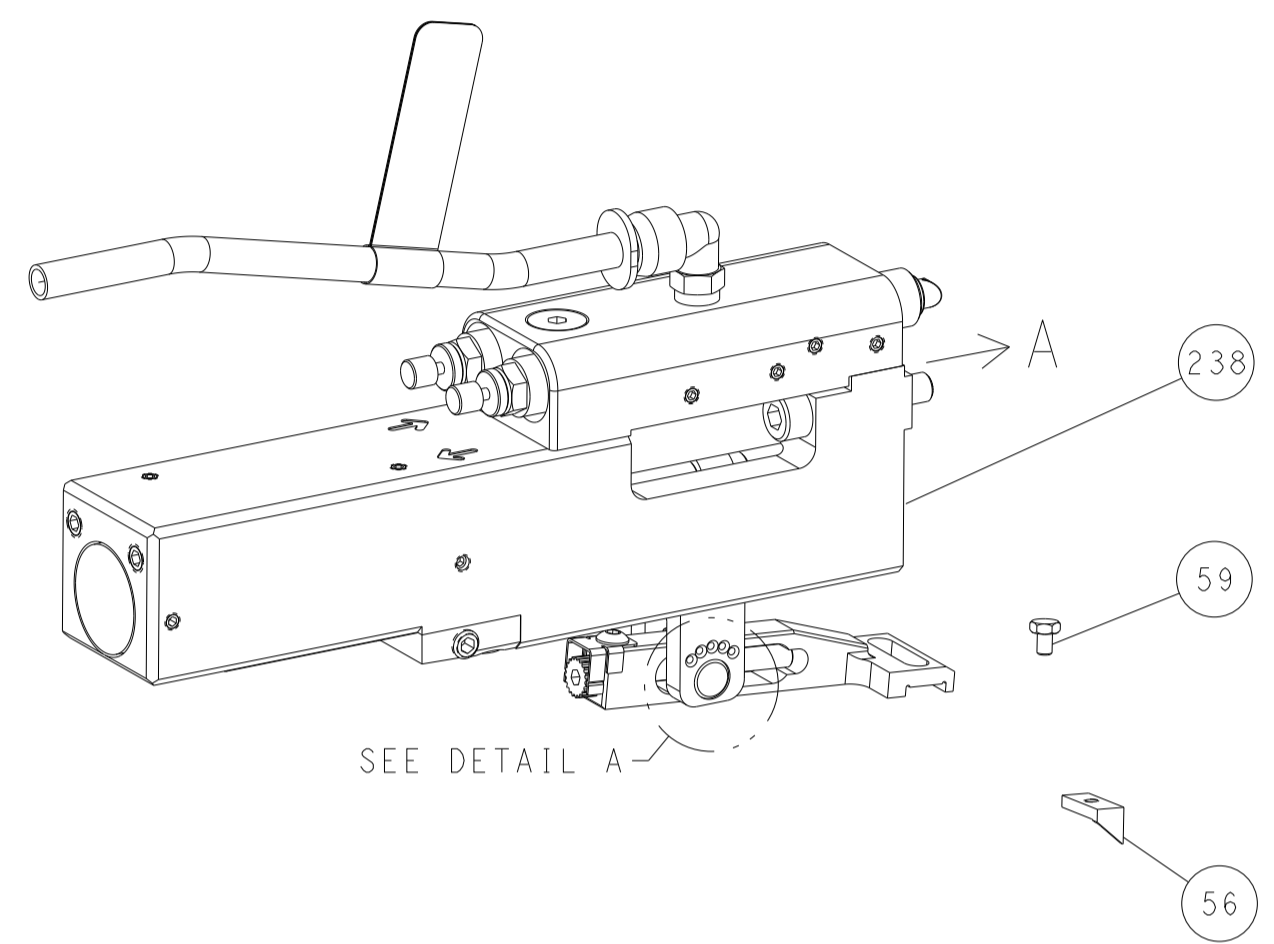
00779 ©=2151498

| LOC | DIST | REVISIONS | | | | | |
|-----|------|-----------|-----|-------------|------|-----|------|
| A | 66 | P | LTN | DESCRIPTION | DATE | DWN | APVD |
| | | - | | SEE SHEET 1 | - | - | - |

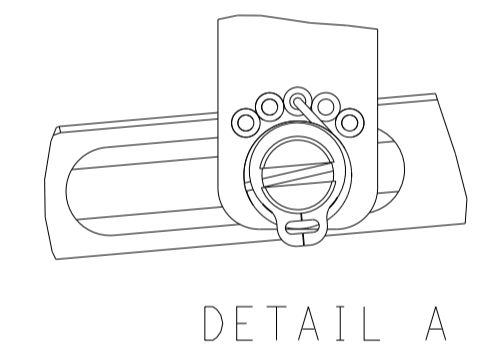
FEED TYPE MECHANICAL



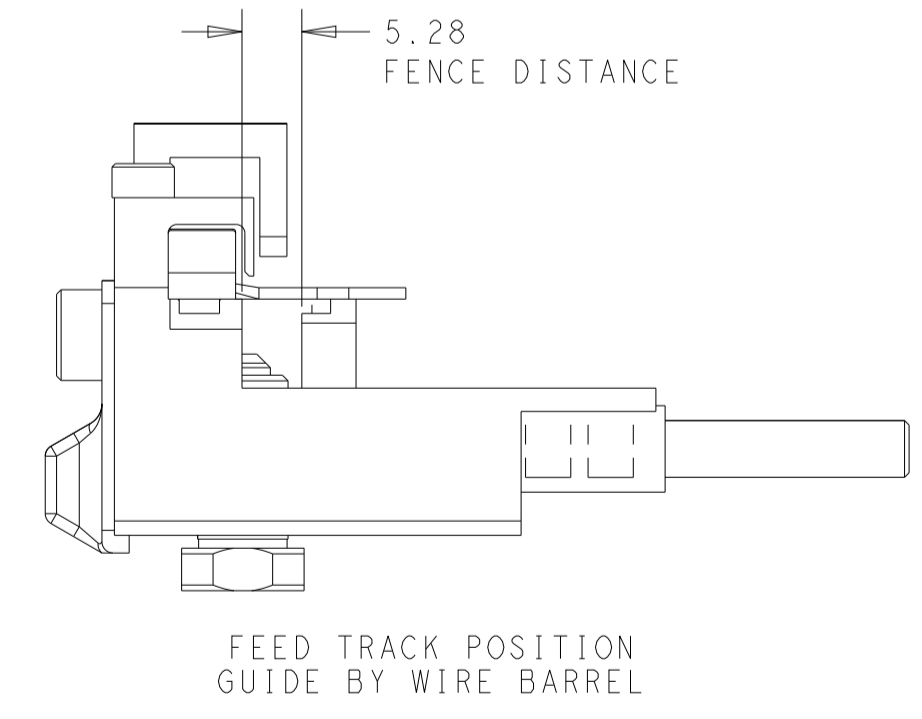
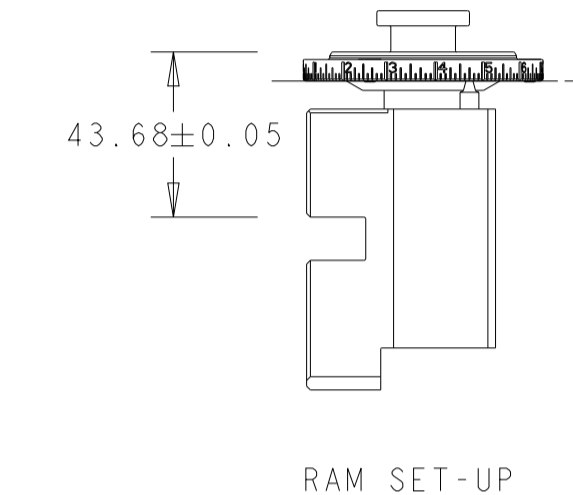
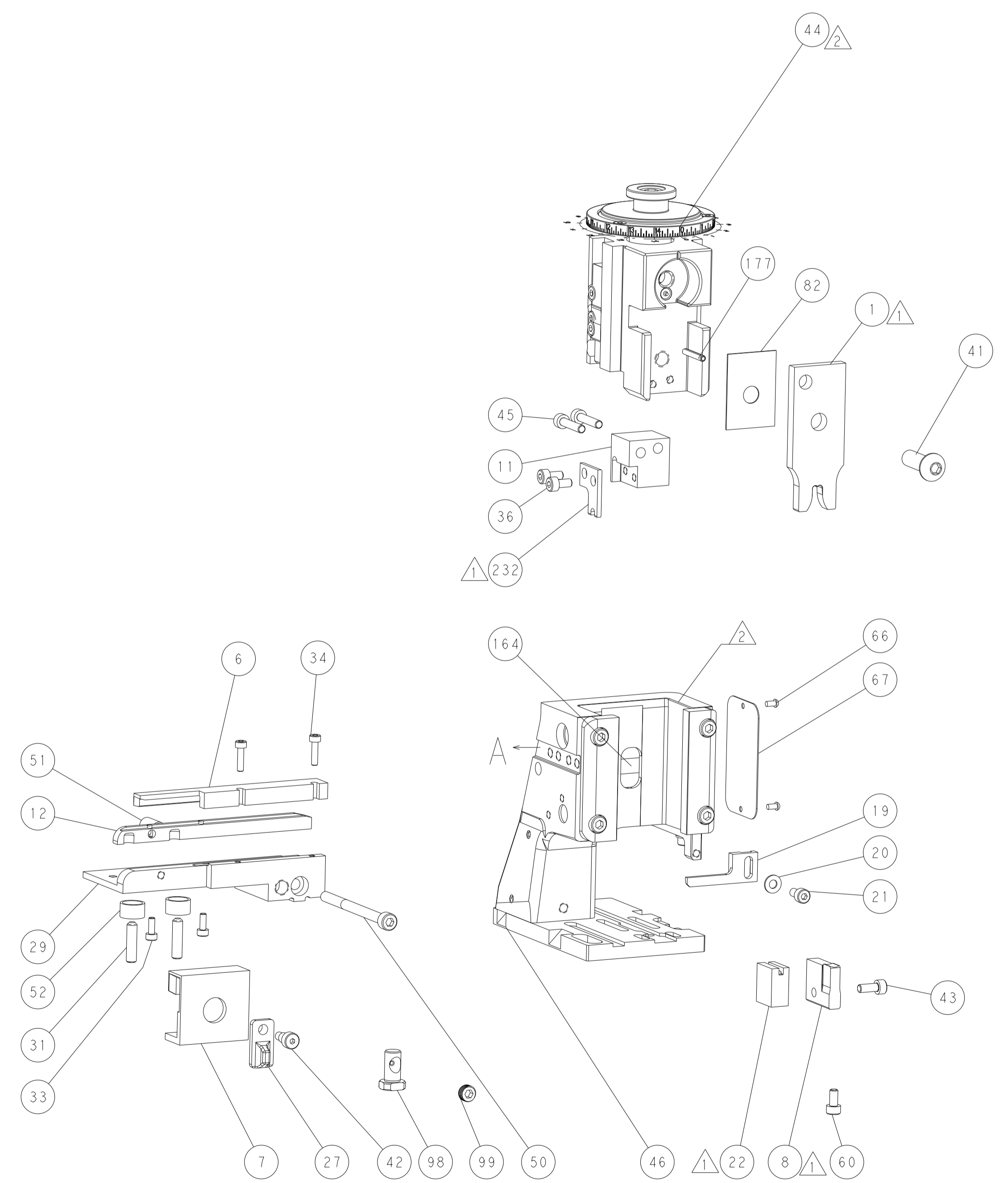
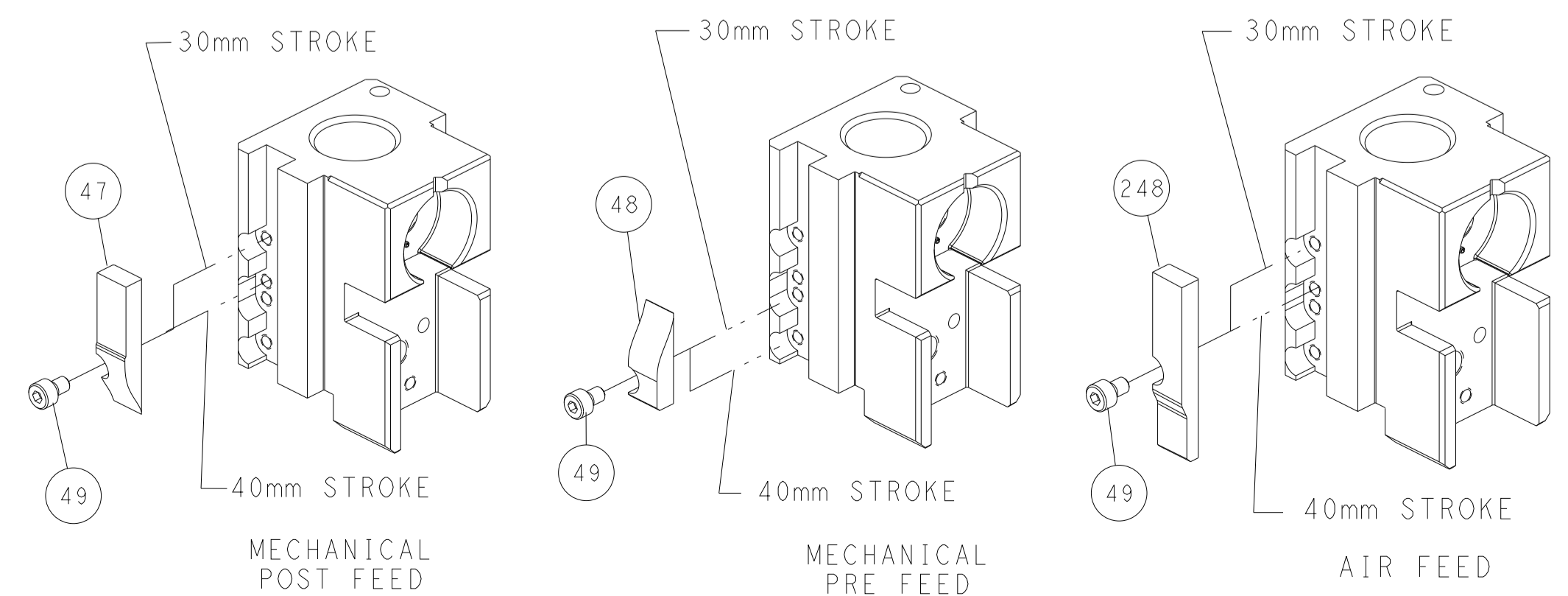
PNEUMATIC



FEED SPRING SETTING POSITION (SHOWN FROM REAR SIDE)



CAM POSITIONS



ATLANTIC VERSION
 Shown on sheets 1 of 4 & 2 of 4
 (Pacific version shown on sheets 3 of 4 & 4 of 4)

| | | | | |
|--|--------------------------|--|---|--|
| <small>THIS DRAWING IS UNPUBLISHED. RELEASED FOR PUBLICATION 2011 BY TYCO ELECTRONICS CORPORATION. ALL RIGHTS RESERVED.</small> | | DWN: B. WEAVER 14SEP2011 CHK: K. STAKEM 14SEP2011 APVD: T. ELBIN 14SEP2011 | NAME: Ocean Side Feed Applicator SIZE: A1 CAGE CODE: 00779 DRAWING NO: C-2151498 | TE Connectivity Harrisburg, PA 17105-3608 |
| DIMENSIONS: mm TOLERANCES UNLESS OTHERWISE SPECIFIED: 0 PLC ±.0005 1 PLC ±.0010 2 PLC ±.0015 3 PLC ±.0020 4 PLC ±.0025 ANGLES FINISH: .0005 | MATERIAL: - FINISH: - | WEIGHT: - SCALE: 1:2 | SHEET 2 OF 4 REV C | RESTRICTED TO: - |

| PART NUMBER | REVISION | DESCRIPTION | FEED TYPE |
|-------------|----------|--------------------------|------------|
| 2-2151498-1 | C | FINE CRIMP HEIGHT ADJUST | MECHANICAL |
| 2-2151498-2 | C | FINE CRIMP HEIGHT ADJUST | PNEUMATIC |
| 7-2151498-7 | A | CRIMP TOOLING KIT | - |

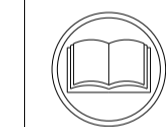
PACIFIC VERSION TERMINATOR
INTERFACE ADAPTER



| APPLICATOR DATA | | |
|--------------------------------------|------------------|------|
| CRIMP | SIZE | TYPE |
| WIRE | 5.33mm [.210 IN] | F |
| INSUL | - | - |
| APPLICATOR INSTRUCTIONS 408-35042 | | |

| TERMINAL DATA: TE TERMINAL | | TE CRIMP SPECIFICATION | |
|------------------------------------|-------------|---------------------------|-------------|
| TERMINAL NAME: TERMINAL, RING | | | |
| WIRE STRIP LENGTH | | INSULATION DIAMETER RANGE | |
| 6.35 mm [.250 IN] | | ∅ - | |
| TERMINAL APPLICATION SPECIFICATION | 114-2084 | - | - |
| TERMINALS APPLIED | | | |
| TE TERMINAL | TE TERMINAL | TE TERMINAL | TE TERMINAL |
| 41356 | 41341 | | |

| WIRE SIZE | CRIMP HEIGHT INCH [mm] | CRIMP HEIGHT REFERENCE SETTING |
|-----------|-----------------------------|--------------------------------|
| 10 AWG | 3.38+/-0.05 [0.133+/-0.002] | 8.5 |
| 12 AWG | 3.07+/-0.05 [0.121+/-0.002] | 12.4 |



- RECOMMENDED SPARE PARTS
- REFER TO SUPPLIED INSTRUCTION SHEET FOR CLEANING, LUBRICATION AND STORAGE OF APPLICATOR.
- CRIMP HEIGHT REFERENCE SETTING WAS THE SETTING USED WHEN THE APPLICATOR WAS QUALIFIED AT THE FACTORY. ADJUSTMENT MAY BE NECESSARY WHEN RUNNING APPLICATOR IN THE FIELD.
- UNLESS SPECIFIED OTHERWISE TORQUE VALUES SHALL BE USED PER DOCUMENT, 101-35000.

***WARNING**
ON INSTALLATION, SET WIRE DISC TO CRIMP HEIGHT REFERENCE SETTING FOR LARGEST WIRE SIZE. CRIMP HEIGHT REFERENCE SETTINGS GREATER THAN THE VALUE SHOWN MAY CAUSE DAMAGE TO THE CRIMP TOOLING. REFER TO THE INSTRUCTION SHEET FOR PROPER SETUP AND ADJUSTMENTS.

PACIFIC VERSION
Shown on sheets 3 of 4 & 4 of 4
(Atlantic version shown on sheets 1 of 4 & 2 of 4)

| LOC | DIST | REVISIONS | | | | | |
|-----|------|-----------|-----|-------------|------|-----|------|
| A | 66 | P | LTN | DESCRIPTION | DATE | OWN | APVD |
| - | - | - | - | SEE SHEET 1 | - | - | - |

| | | | | | |
|---|-----|-----|-------------|----------------------------------|-----|
| - | - | 1 | 2119580-1 | MECHANICAL FEED ASSEMBLY | 239 |
| - | 1 | - | 2844940-1 | AIR FEED MODULE | 238 |
| - | 1 | 1 | 1673019-1 | BLADE, SLUG | 232 |
| - | 1 | 1 | 993111-1 | PIN, SLOTTED SPRING 3.0 X 20.0 | 177 |
| - | REF | REF | 994970-2 | COUNTER, MAGNETIC | 164 |
| - | 1 | - | 2119641-2 | FEED CAM, AIR FEED | 151 |
| - | 1 | 1 | 2168083-8 | SCR, SKT HD CAP, RoHS, M4 X 16 | 144 |
| - | - | 1 | 2119653-2 | FEED CAM, POST FEED | 142 |
| - | 1 | 1 | 1803583-2 | APPLICATOR BASIC ASSEMBLY, SF | 141 |
| - | 1 | 1 | 1803516-1 | RAM ASSEMBLY, SF PACIFIC | 140 |
| - | 1 | 1 | 2844908-1 | SCREW, LOCKING | 99 |
| - | 1 | 1 | 2844907-1 | POST, LOCKING | 98 |
| - | 1 | 1 | 455888-5 | SPACER, CRIMPER | 82 |
| - | 1 | 1 | 1803607-3 | DOCUMENTATION PACKAGE | 71 |
| - | 1 | 1 | 2119740-1 | TAG, IDENTIFICATION | 67 |
| - | 2 | 2 | 2168078-1 | SCREW, DRIVE, RH, RoHS, 2 x .188 | 66 |
| - | 1 | 1 | 5-18022-5 | SCR, HEX HD CAP, M4 X 6.0 | 59 |
| - | 1 | 1 | 1338683-1 | FEED PAWL | 56 |
| - | 2 | 2 | 1-22284-0 | SPRING, COMPRESSION | 52 |
| - | 1 | 1 | 1-22281-8 | SPRING, COMPRESSION | 51 |
| - | 1 | 1 | 2168083-6 | SCR, SKT HD CAP, RoHS, M5 X 65 | 50 |
| - | 1 | 2 | 18023-9 | SCR, SKT HD CAP M4 X 6.0 | 49 |
| - | - | 1 | 2119652-1 | FEED CAM, PRE FEED | 48 |
| - | 2 | 2 | 2168083-9 | SCR, SKT HD CAP, RoHS, M4 X 20 | 45 |
| - | 1 | 1 | 1-18023-1 | SCR, SKT HD CAP M4 X 10.0 | 43 |
| - | 1 | 1 | 980371-4 | SCR, SKT HD SHLDR 5.0 DIA X 6.0 | 42 |
| - | 1 | 1 | 1803602-1 | SCR, BHSC, RoHS (M8 X 25) | 41 |
| - | 2 | 2 | 2168083-2 | SCR, SKT HD CAP, RoHS, M4 X 8.0 | 36 |
| - | 2 | 2 | 18023-5 | SCR, SKT HD CAP M3 X 12.0 | 34 |
| - | 2 | 2 | 2168083-1 | SCR, SKT HD CAP, RoHS, M3 X 8.0 | 33 |
| - | 2 | 2 | 2-18032-5 | SCR, SET, FLT PNT, M5 X 20.0 | 31 |
| - | 1 | 1 | 2844938-1 | PLATE, STRIP GUIDE | 29 |
| - | 1 | 1 | 356835-1 | LEVER, DRAG RELEASE | 27 |
| - | 1 | 1 | 2119924-2 | SHEAR, LOWER | 22 |
| - | 1 | 1 | 2168083-2 | SCR, SKT HD CAP, RoHS, M4 X 8.0 | 21 |
| - | 1 | 1 | 1-18028-2 | WASHER, FLAT, REG M4 | 20 |
| - | 1 | 1 | 2119533-1 | STRIPPER, SIDE FEED | 19 |
| - | 1 | 1 | 1-2119928-6 | FENCE | 12 |
| - | 1 | 1 | 2119830-2 | HOLDER, SLUG BLADE | 11 |
| - | 1 | 1 | 2119923-1 | ANVIL, SPECIAL | 8 |
| - | 1 | 1 | 3-690754-6 | DRAG, SPECIAL | 7 |
| - | 1 | 1 | 1-679651-9 | FRONT STRIP GUIDE | 6 |
| - | 1 | 1 | 9-568176-6 | CRIMPER, WIRE | 1 |

| DIMENSIONS: | | TOLERANCES UNLESS OTHERWISE SPECIFIED: | | MATERIAL: | | FINISH: | |
|-------------|---------|--|---------|-----------|---------|---------|--------|
| mm | 0 PLC ± | 1 PLC ± | 2 PLC ± | 3 PLC ± | 4 PLC ± | ANGLES | FINISH |
| | | | | | | | |

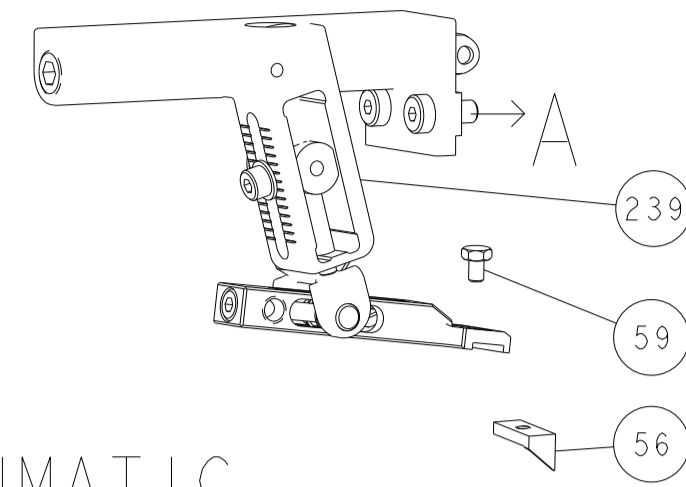
| OWN | CHK | APVD | DATE | DESCRIPTION | ITEM NO |
|-----------|-----------|----------|-----------|----------------------------|---------|
| B. WEAVER | K. STAKEM | T. ELBIN | 14SEP2011 | Ocean Side Feed Applicator | |

| SIZE | CAGE CODE | DRAWING NO | RESTRICTED TO |
|------|-----------|------------|---------------|
| A1 | 00779 | 2151498 | |

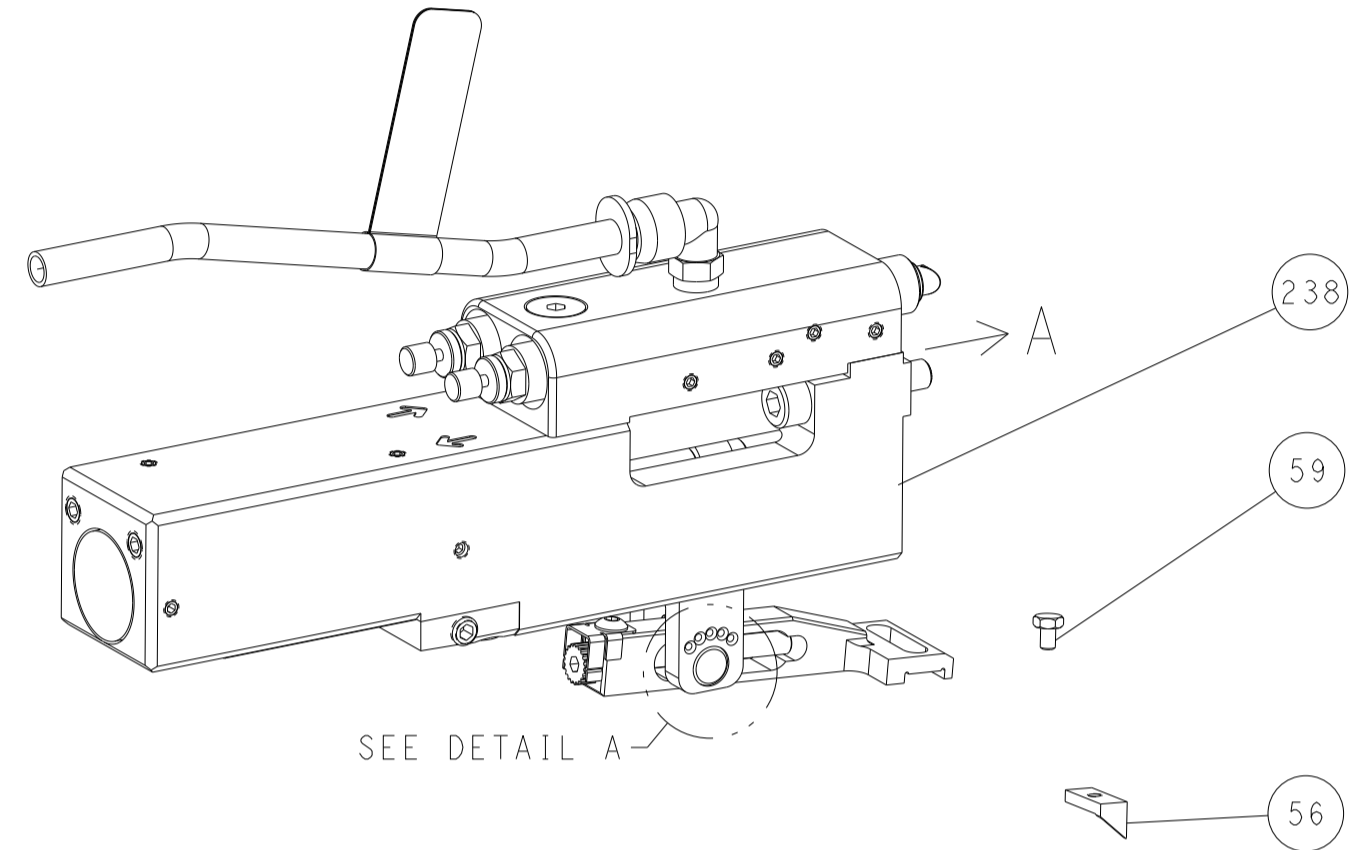
Customer Accessible Production Drawing SCALE 1:2 SHEET 3 OF 4 REV C

| LOC | DIST | REVISIONS | | | | | |
|-----|------|-----------|-----|-------------|------|-----|------|
| | | P | LTN | DESCRIPTION | DATE | OWN | APVD |
| A | 66 | - | - | SEE SHEET 1 | - | - | - |

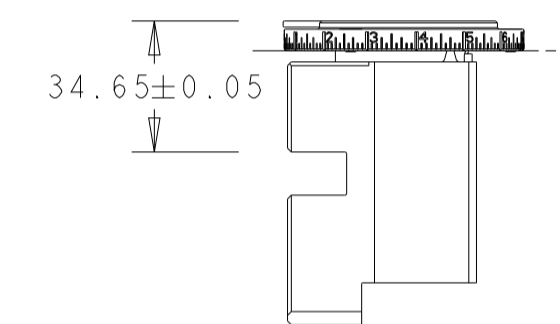
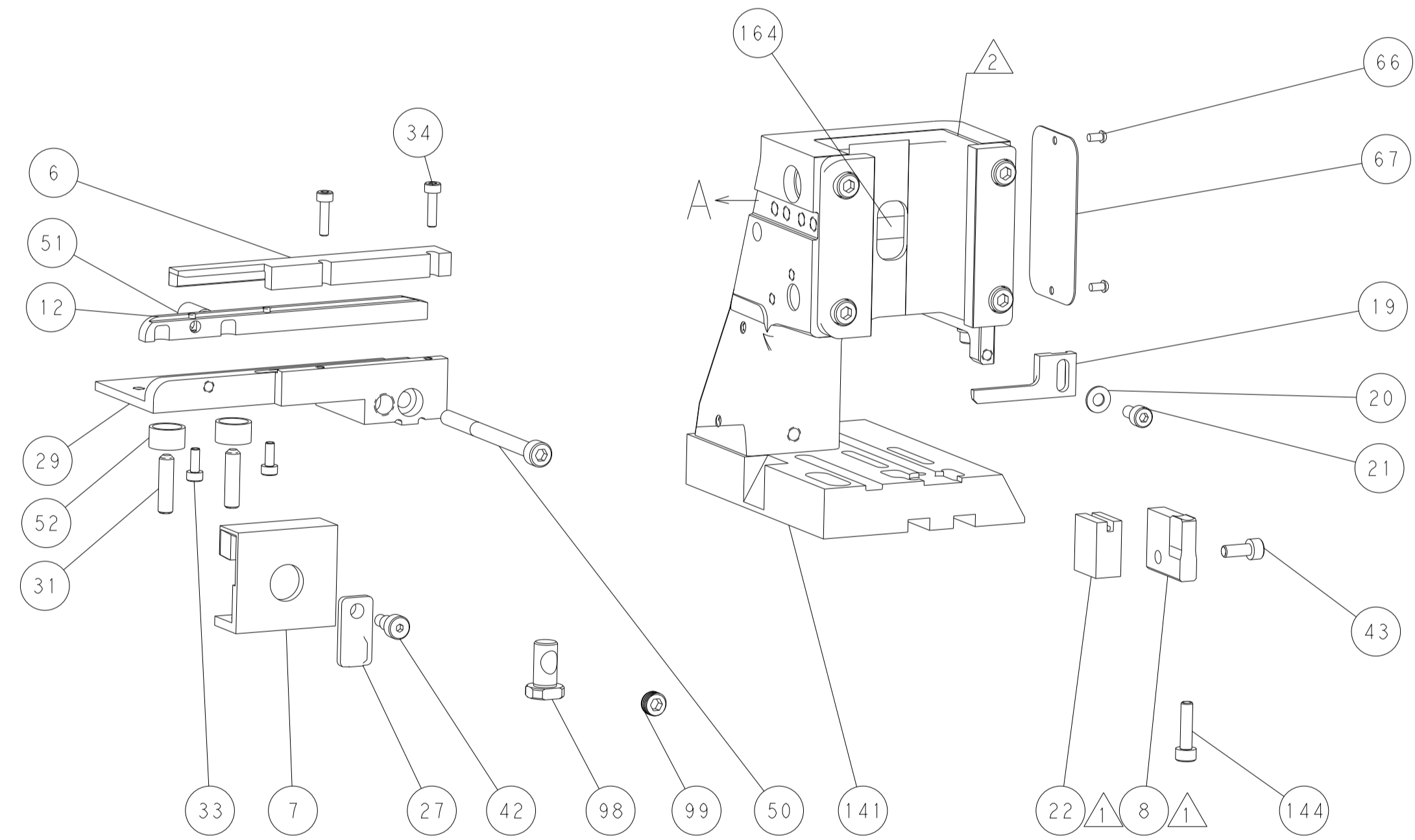
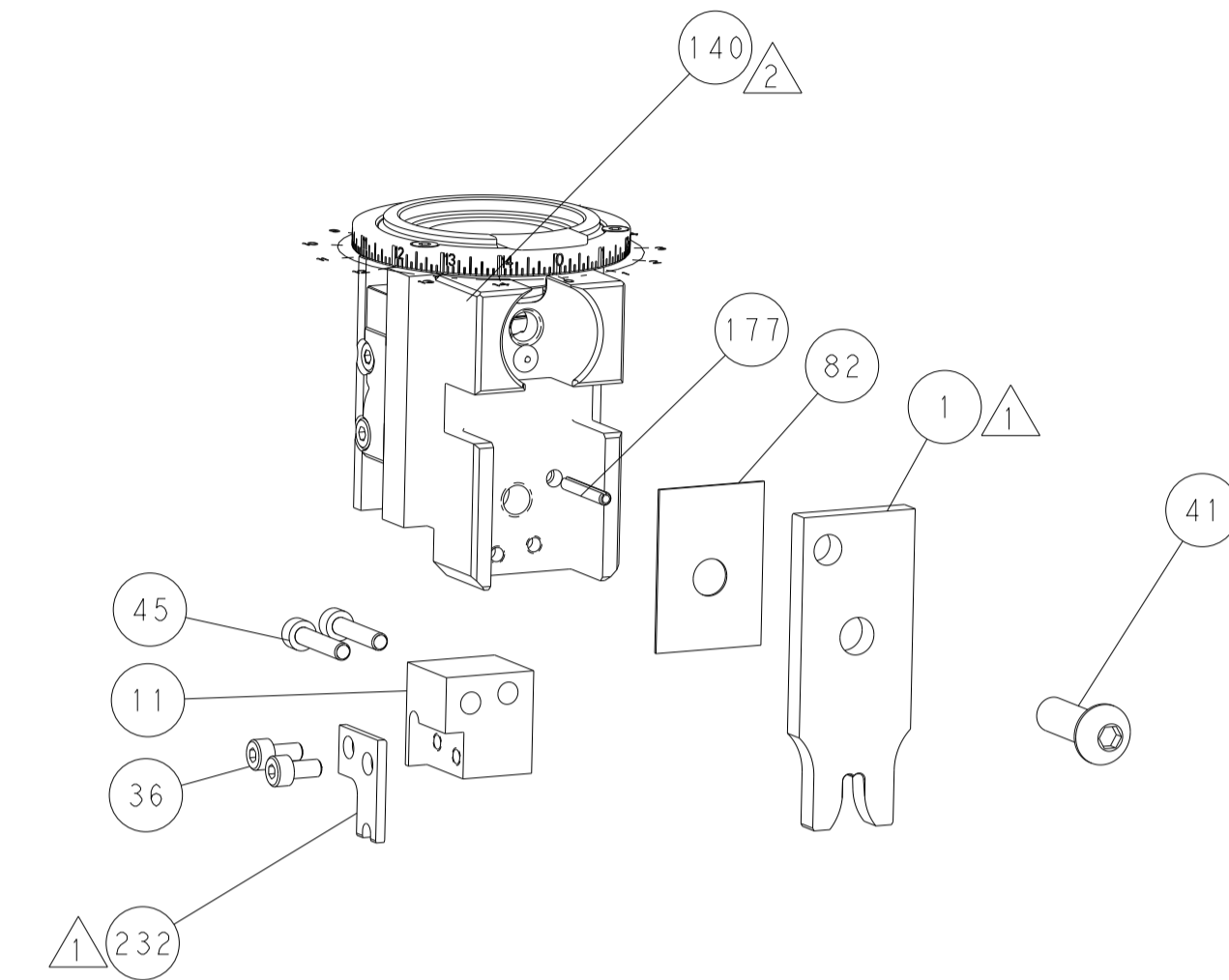
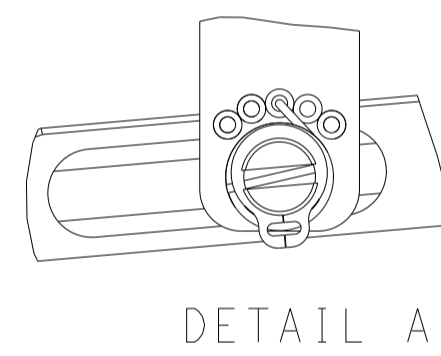
FEED TYPE MECHANICAL



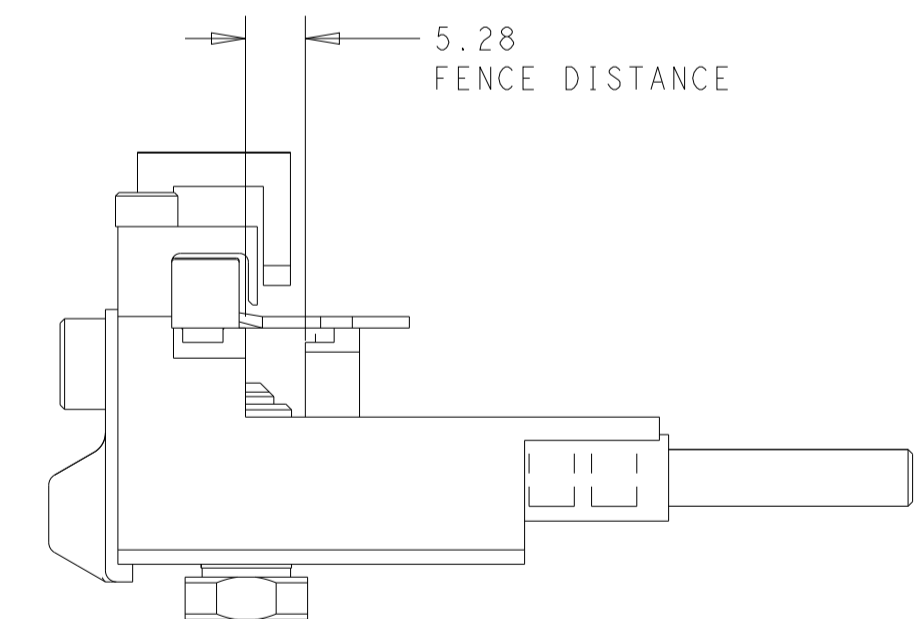
PNEUMATIC



FEED SPRING SETTING POSITION (SHOWN FROM REAR SIDE)

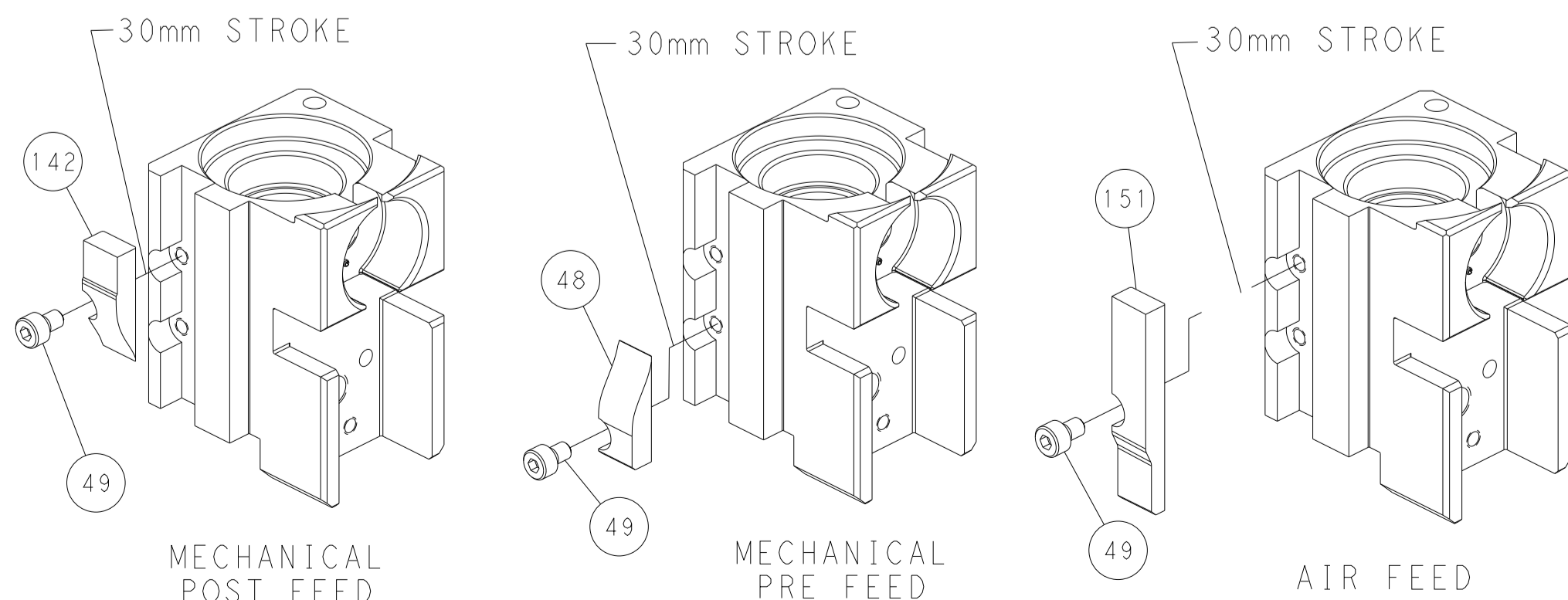


RAM SET-UP



FEED TRACK POSITION
GUIDE BY WIRE BARREL

CAM POSITIONS



PACIFIC VERSION
 Shown on sheets 3 of 4 & 4 of 4
 (Atlantic version shown on sheets 1 of 4 & 2 of 4)

| | | | |
|--|--|---|---------------------------------------|
| <small>THIS DRAWING IS A CONTROLLED DOCUMENT FOR TYCO ELECTRONICS CORPORATION. IT IS THE PROPERTY OF TYCO ELECTRONICS CORPORATION AND IS NOT TO BE REPRODUCED OR TRANSMITTED IN ANY FORM OR BY ANY MEANS, ELECTRONIC OR MECHANICAL, INCLUDING PHOTOCOPYING, RECORDING, OR BY ANY INFORMATION STORAGE AND RETRIEVAL SYSTEM, WITHOUT THE WRITTEN PERMISSION OF TYCO ELECTRONICS CORPORATION.</small> | | DWN B. WEAVER 14SEP2011 CHK K. STAKEM 14SEP2011 APVD T. ELBIN 14SEP2011 | NAME Ocean Side Feed Applicator |
| DIMENSIONS: mm | TOLERANCES UNLESS OTHERWISE SPECIFIED: 0 PLC ± 1 PLC ± 2 PLC ± 3 PLC ± 4 PLC ± ANGLES ± FINISH ± | SIZE CAGE CODE DRAWING NO A1 00779 C=2151498 | RESTRICTED TO - |
| MATERIAL | | WEIGHT Customer Accessible Production Drawing | SCALE 1:2 SHEET 4 OF 4 REV C |