

PART NUMBER	REV	TERMINATOR	FEED TYPE	DESCRIPTION
1426570-1	B	LEADMAKER	MECH POST FEED	CUTS CARRIER
1426570-2	B	BENCH	MECH PRE FEED	CUTS CARRIER
1426570-6	B	LEADMAKER	MECH POST FEED	CONTINUOUS CARRIER
7-1426570-1	B	LEADMAKER	MECH POST FEED	-1 AND SPARE PARTS
7-1426570-2	B	BENCH	MECH PRE FEED	-2 AND SPARE PARTS
7-1426570-6	B	LEADMAKER	MECH POST FEED	-6 AND SPARE PARTS
7-1426570-7	A	-	-	SPARE PARTS KIT

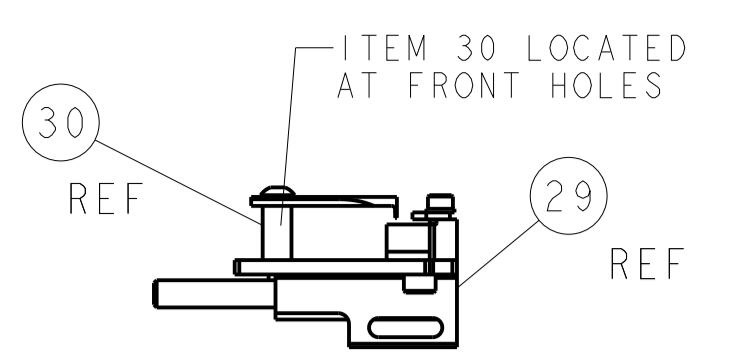
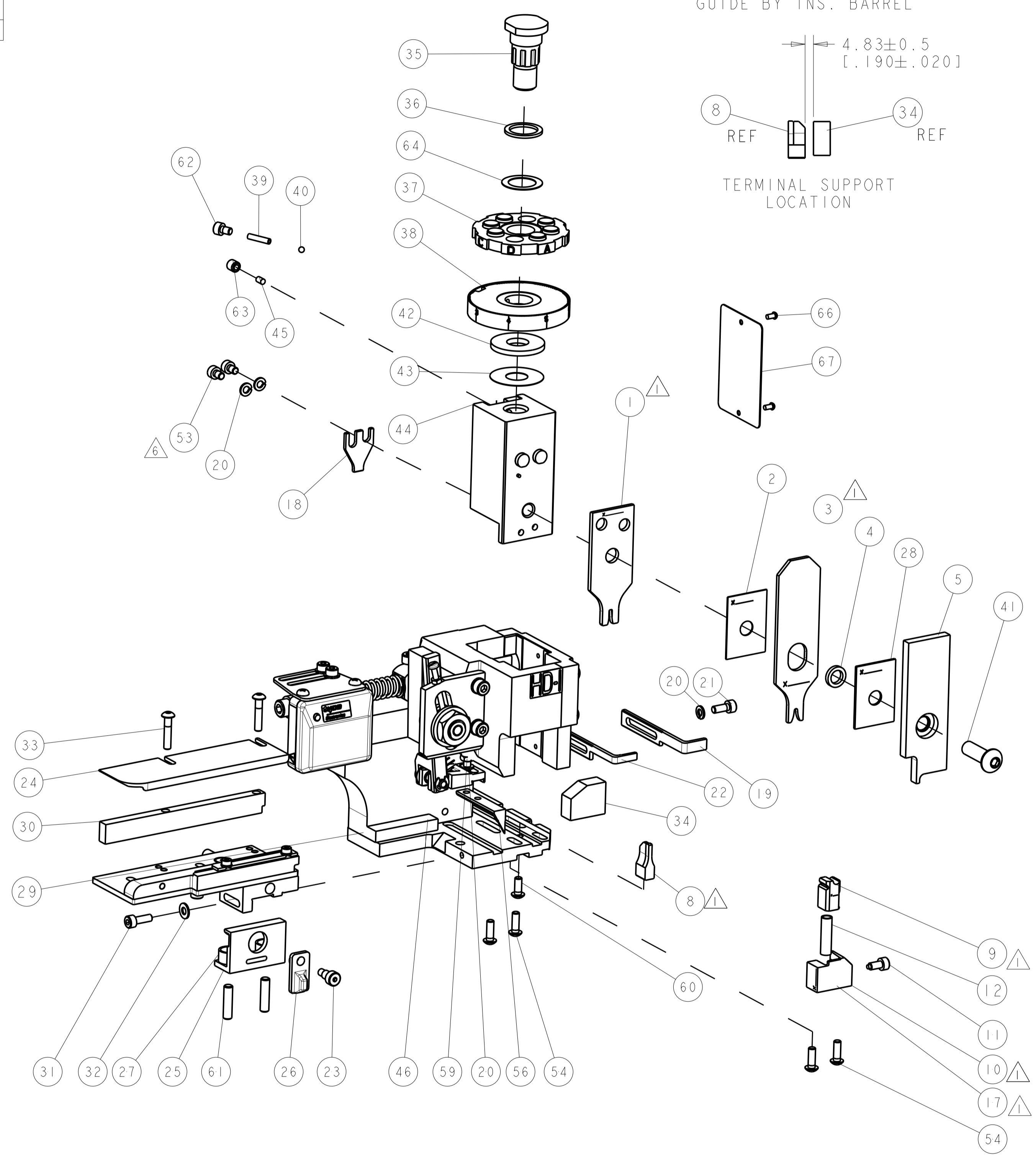
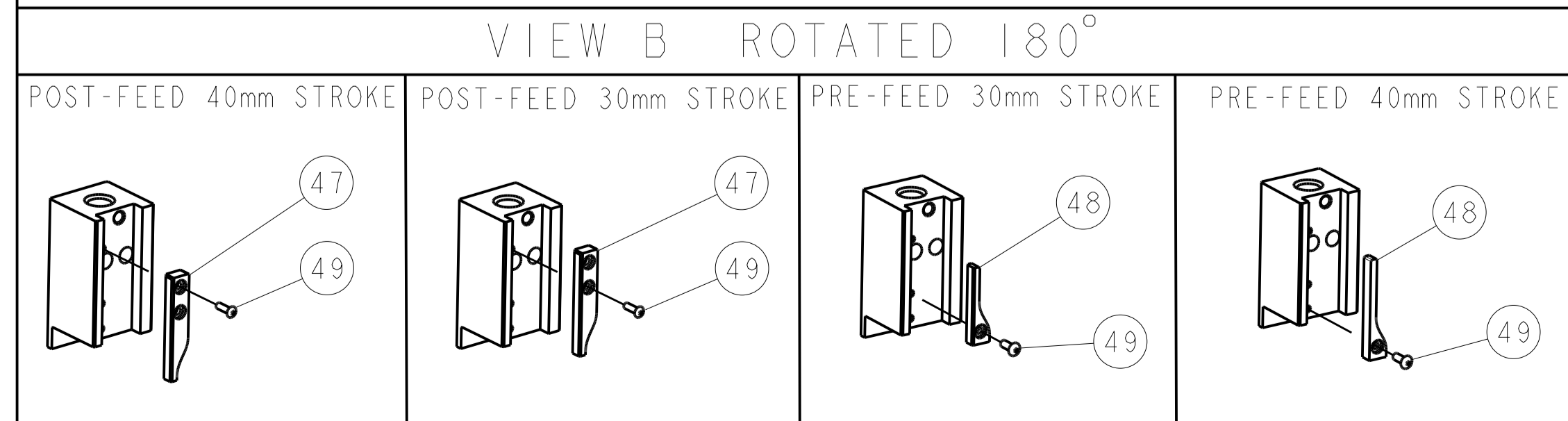
CRIMP	SIZE	TYPE	RANGE
WIRE	1.78 [1.070 IN]	F	0.14-0.56mm ² or 26-20 AWG ⁴
INSUL	2.29 [1.090 IN]	O	0.80-2.00 [1.031-.079 IN] ⁴
WIRE STRIP LENGTH 3.00-4.00 [1.118-1.57 IN]		APPL INSTRUCTIONS 408-8322	

TERMINAL APPL SPEC	FEED
-	12.50 [1.492 IN]

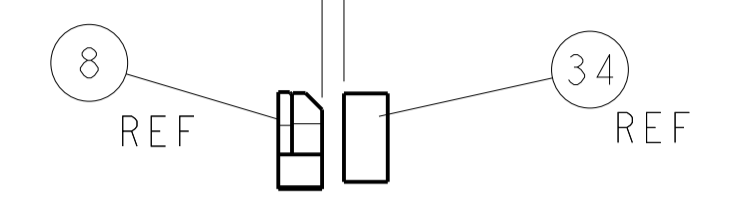
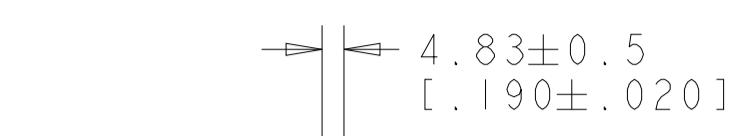
AMP TERM PN	MFR TERM PN	-	-
1572649-1	09060006421	-	-
1572649-2	09060006471	-	-
1572649-3	09060006481	-	-
1572649-4	09060007471	-	-

WIRE SIZE	CRIMP HEIGHT	PINPN & LENGTH [IN]
0.50mm ²	1.05 ±0.05 [1.041 ±.002 IN]	3-354779-4 [1.3160]
0.34mm ²	1.00 ±0.05 [1.039 ±.002 IN]	3-354779-8 [1.3180]
0.25mm ²	0.95 ±0.05 [1.037 ±.002 IN]	4-354779-2 [1.3200]

- ¹ RECOMMENDED SPARE PARTS.
- 2. GREASE RAM, CAM, CAM FOLLOWER AND FEED ROD LIGHTLY.
- 3. LUBRICATE DAILY PER THE APPLICATOR INSTRUCTION SHEET SUPPLIED WITH THE APPLICATOR.
- ⁴ WIRE AND INSULATION RANGE QUOTED IS THAT OF THE TERMINAL.
- ⁵ CRIMP DATA SUPPLIED BY CUSTOMER.
- ⁶ CUT TO LENGTH AT ASSY.



FEED TRACK POSITION GUIDE BY INS. BARREL



TERMINAL SUPPORT LOCATION

77	76	72	71	6	2	1	PART NO	DESCRIPTION	ITEM NO
-	-	-	-	-	-	-	-	-	84
-	-	-	-	-	-	-	-	-	83
-	-	-	-	-	-	-	-	-	82
-	-	-	-	-	-	-	-	-	81
-	-	-	-	-	-	-	-	-	80
-	-	-	-	-	-	-	-	-	79
-	-	-	-	-	-	-	-	-	78
-	-	-	-	-	-	-	-	-	77
-	-	-	-	-	-	-	-	-	76
-	-	-	-	-	-	-	-	-	75
-	-	-	-	-	-	-	-	-	74

SET UP GAGE 458637-3

LOC	DIST	REV	DATE	BY	CHK	APPV
A	66	1	10NOV2005	MC	MC	
B		2	04APR2014	KH	UG	

REV	DATE	DESCRIPTION	ITEM NO
-	-	-	73
-	-	-	72
-	1	1338705-1 DOCUMENTATION PACKAGE	71
-	-	-	70
-	-	-	69
-	-	-	68
-	1	461264-1 PLATE, IDENTIFICATION	67
-	2	21017-2 SCREW, DRIVE	66
-	-	-	65
-	1	986950-1 WASHER, FLAT PRECISION	64
-	1	3-18031-0 SCR, SET, CUP POINT M6 X 6.0	63
-	1	18023-9 SCR, SKT HD CAP M4 X 6.0	62
-	2	2-18032-5 SCR, SET, FLT POINT M5 X 20.0	61
-	1	18024-7 SCR, BTN SKT HD CAP (M4 X 10.0)	60
-	1	5-18022-2 SCR, HEX HD CAP M4 X 8.0	59
-	-	-	58
-	-	-	57
-	1	1338685-1 PAWL, FEED	56
-	-	-	55
-	4	18024-8 SCR, BTN SKT HD CAP (M4 X 12.0)	54
-	2	18023-9 SCR, SKT HD CAP M4 X 6.0	53
-	-	-	52
-	-	-	51
-	-	-	50
-	1	18024-3 SCR, BTN SKT HD CAP (M3 X 10.0)	49
-	1	1338675-1 CAM, UNIVERSAL PRE FEED	48
-	1	1338676-1 CAM, UNIVERSAL POST-FEED	47
-	1	1320999-3 APPLICATOR SUBASSEMBLY, HDI	46
-	1	690191-1 PLUG, NYLON	45
-	1	1338660-1 RAM	44
-	1	690125-1 SHIM SUB-ASSY	43
-	1	690124-1 WASHER, RAM (.115)	42
-	1	2-18024-6 SCR, BTN SKT HD CAP (M8 X 25.0)	41
-	1	23241-1 BALL, STEEL	40
-	1	2-22278-7 SPRING, COMPRESSION	39
-	1	1320922-1 DISC, ADJUST, INSULATION CRIMP	38
-	1	354777-1 WIRE DISC, ASSEMBLY	37
-	1	22480-5 SPRING, COMPRESSION	36
-	1	690212-1 POST, RAM	35
-	1	1320934-1 SUPPORT, TERMINAL	34
-	2	1-18024-0 SCR, BTN SKT HD CAP (M4 X 20.0)	33
-	1	18027-2 WASHER, FLAT, REG M4	32
-	1	1-18023-2 SCR, SKT HD CAP M4 X 12.0	31
-	1	1320908-4 SPACER, STRIP GUIDE	30
-	1	1633073-1 STRIP GUIDE ASSEMBLY	29
-	1	1-455888-0 SPACER, CRIMPER	28
-	2	1-22284-0 SPRING, COMPRESSION	27
-	1	356835-1 LEVER, DRAG RELEASE	26
-	1	240792-1 DRAG, TERMINAL	25
-	1	1320928-1 STRIP GUIDE	24
-	1	980371-4 SCR, SKT HD SHLDR 5.0 DIA X 6.0	23
-	1	690472-2 STRIPPER	22
-	1	1-18023-1 SCR, SKT HD CAP M4 X 10.0	21
-	4	18025-2 WASHER, SPRG LOCK, REG M4	20
-	1	690472-1 STRIPPER	19
-	1	690518-2 HOLD DOWN, TERMINAL	18
-	1	1338684-1 SHEAR HOLDER, FRONT	17
-	-	-	16
-	-	-	15
-	-	-	14
-	-	-	13
-	1	3-22280-3 SPRING, COMPRESSION	12
-	1	356885-4 STOP, SHEAR	11
-	1	1320921-1 SHEAR HOLDER, FRONT, CUT	10
-	1	462006-2 FLOATING SHEAR, FRONT	9
1	2	7-1333203-5 ANVIL, COMBINATION	8
-	-	-	7
-	-	-	6
-	1	2-455889-0 DEPRESSOR, SHEAR	5
-	1	1-238011-0 BLOCK, CRIMPER SPACER	4
1	2	5-904741-8 CRIMPER, INSUL O PREMIUM	3
-	1	455888-5 SPACER, CRIMPER	2
1	2	1-456404-6 CRIMPER, WIRE PREMIUM	1

DIMENSIONS: mm [IN]	TOLERANCES UNLESS OTHERWISE SPECIFIED: 0 PLC ±. 1 PLC ±. 2 PLC ±. 3 PLC ±. 4 PLC ±. ANGLES ±.	DWG NO: 22SEP2005 CHK: J.D. PROUSE APVD: F. BACKHURST PRODUCT SPEC: APPLICATION SPEC: See Table MATERIAL: FINISH:	TE Connectivity Harrisburg, PA 17105-3608 STE SIDE FEED HDI APPLICATOR SIZE: CAGE CODE DRAWING NO: A1 00779 ©=1426570 CUSTOMER AND ASSEMBLY DRAWING SCALE: 3:5 SHEET 1 OF 1 REV B
------------------------	---	--	--