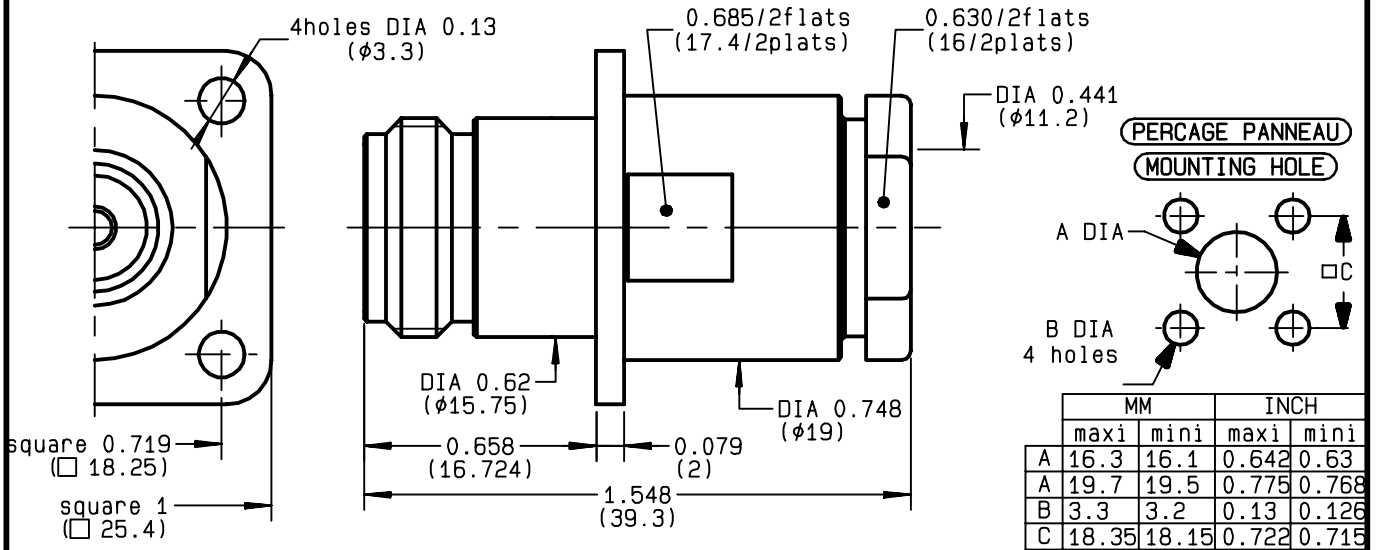


**STRAIGHT SQUARE FLANGE JACK  
CLAMP TYPE - CABLE 10+11/50 S+D**

**R161.272.000**  
**SERIES N**



NOMINAL IMPEDANCE	<b>50</b> Ω
FREQUENCY RANGE	<b>0-11</b> GHz
TEMPERATURE RATING	<b>-55/+155</b> °C
V.S.W.R	<b>1.30</b> + x F(GHz)Maxi
RF INSERTION LOSS	<b>0.048</b> √F(GHz) dB Maxi
VOLTAGE RATING	<b>1400</b> Veff Maxi
DIELECTRIC WITHSTANDING VOLTAGE	<b>2500</b> Veff Mini
INSULATION RESISTANCE	<b>5000</b> MΩMini
HERMETIC SEAL	<b>NA</b> Atm.cm <sup>3</sup> /s
LEAKAGE (pressurized only)	<b>NA</b>
MECHANICAL DURABILITY	<b>500</b> Cycles
WEIGHT	<b>52.8</b> gr
SPECIFICATION	

- CABLES : **KX 4**  
**KX 8**  
**RG 11**  
**RG 144**  
**RG 165**  
**RG 213**  
**RG 214**  
**RG 216**  
**RG 225**  
**RG 393**

OTHERS CHARACTERISTICS

CABLE RETENTION	<b>300</b>	N Mini
CENTER CONTACT RETENTION		
Axial force - mating end	<b>68</b>	N Mini
Axial force - opposite end	<b>68</b>	N Mini
Torque	<b>NA</b>	cm.N Mini
RECOMMENDED TORQUES		
Mating	<b>NA</b>	cm.N
Panel nut	<b>NA</b>	cm.N
Clamp nut	<b>800</b>	cm.N

CONNECTOR PARTS	MATERIALS	FINISH	(all values are given in micrometers)
BODY	BRASS	BBR 2	
OUTER CONTACT	BRASS	BBR 2	
CENTER CONTACT	BERYLLIUM COPPER	GOLD 0.5 OVER NICKEL 2	
INSULATOR	PTFE	-	
GASKET	-	-	
OTHERS PIECES	BRASS	BBR 2	

BONMINI

ISSUE <b>9736U01</b>	CREATION DATE <b>02/12/1992</b>	FILE PART-NUMBER
-------------------------	------------------------------------	------------------



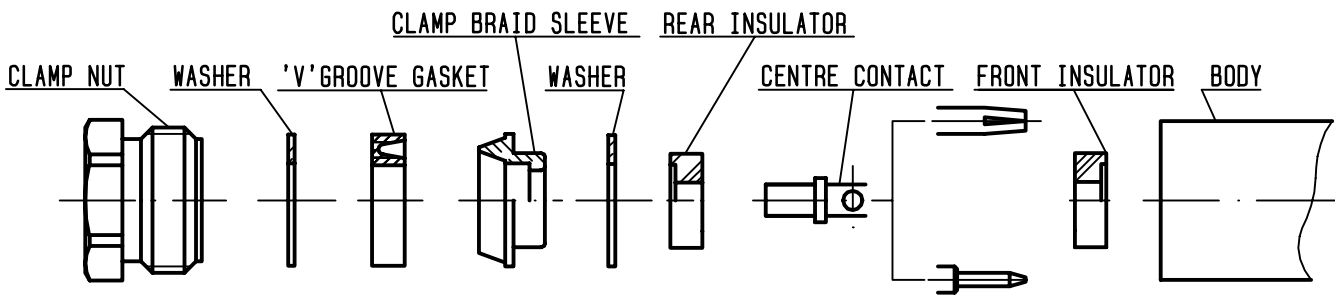
The information given here is subject to change without notice.  
Design changes may be in order to improve the product .

Connect to the future

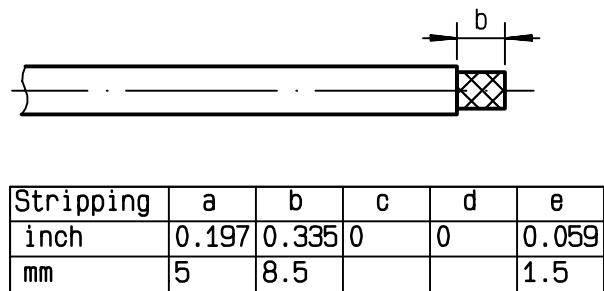


**R161.272.000**

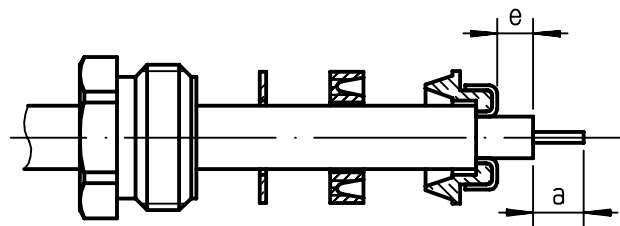
ISSUE **9736U01** SERIES **N**



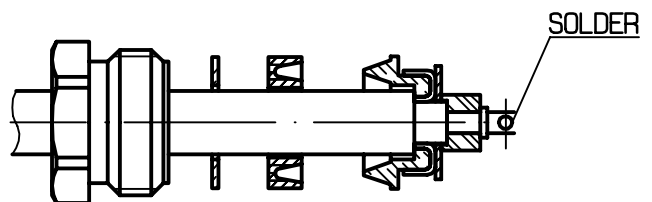
① Strip the cable .  
-  
-  
-  
-



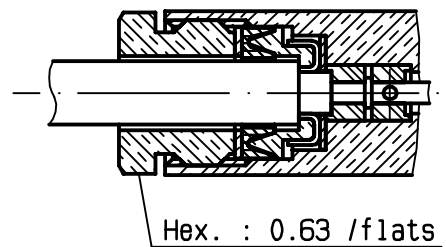
② Slide the clamp nut , the washer and the 'V' groove gasket onto the cable .  
Slide clamp braid sleeve over braid .  
Fold back braid and trim off surplus braid .  
Trim back dielectric as shown .



③ Mount washer and rear insulator .  
Solder the cable inner conductor into centre contact .  
-  
-  
-



④ Mount front insulator .  
Screw sub-assembly into the connector body .  
( recommended coupling torque 70.87 in.lb )  
-



BONOMINI