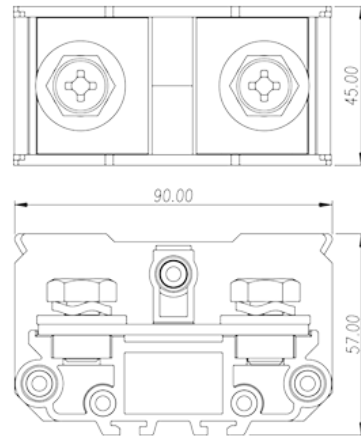
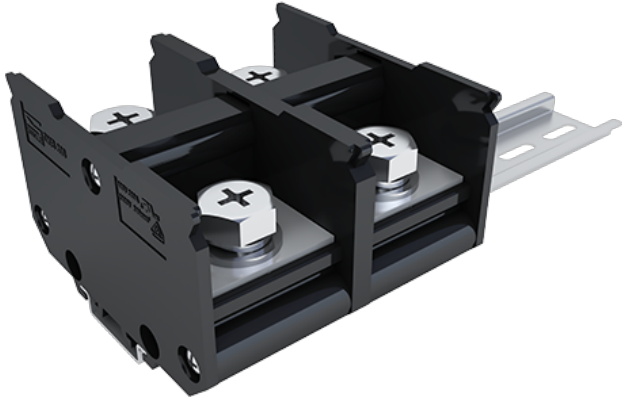


# DKB300

NEMA Terminal Blocks > Rail Mounting

Date:2022-11-01



The web catalog is for reference only. Dinkle remains the right of product modification and engineering change of the design. The final product is made according to engineering drawing.

## Product Description

M10, 600V, 380A

## General information

Short description	Barrier terminal blocks, Screw connection
Category	Rail mounting terminal blocks
Color	Black (default)
Connection method	Screw connection
Type of locking	Rail mounting
Level	Single level

## Material information

Insulation material	PC
Insulation material group	IIIa
Flame retardant rating , compliant with UL94	V2
Conductor material	Copper Alloy
Plating of conductor surface	Ni plated

## Connection data-IEC

Rated voltage (V)	800
-------------------	-----

Rated current (A)	415
Rated voltage (III/3)(V)	800
Rated impulse voltage (II/2)(KV)	8
Rated impulse voltage (III/2)(KV)	8
Rated impulse voltage (III/3)(KV)	8
Conductor cross section solid. min (mm <sup>2</sup> )	70 or 10(2)
Conductor cross section solid.max (mm <sup>2</sup> )	240 or 70(2)
Conductor cross section stranded. min (mm <sup>2</sup> )	70 or 10(2)
Conductor cross section stranded. max (mm <sup>2</sup> )	240 or 70(2)
2 conductors with same cross section, solid, max (mm <sup>2</sup> )	240
2 conductors with same cross section, stranded, max (mm <sup>2</sup> )	240
Screw thread	M10
Slotted screwdriver size (Blade thickness x Width)(mm)	1.0x5.5
Rated torque (N.m)	10
Recommend tightening torque. min (N.m)	4
Recommend tightening torque. max (N.m)	10
Stripping Length (mm)	32~33

## Connection data-UL

Rated voltage (UL/CUL Group B)(V)	600
Rated current (UL/CUL Group B)(A)	380
Rated voltage (UL/CUL Group C)(V)	600
Rated current (UL/CUL Group C)(A)	380
Min. solid wire connection (AWG) acc. to UL/CUL	3/0 or 6(2)
Max. solid wire connection AWG acc. to UL/CUL	500Kcmil or 3/0(2)
Min. stranded wire connection AWG acc. to UL/CUL	3/0 or 6(2)
Max. stranded wire connection AWG acc. to UL/CUL	500Kcmil or 3/0(2)

## Environment & Safety

Back of the hand protection (YES or NO)	YES
Operating temperature. max (°C)	125
Operating temperature. min (°C)	-40

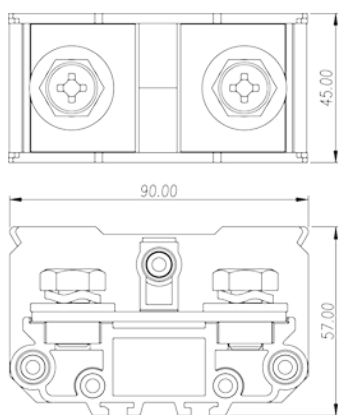
## UL Recognized

Wire Range (Group B)(AWG)	500Kcmil~3/0
Rated voltage (Group B)(V)	600
Rated current (Group B)(A)	380
Wire Range (Group C)(AWG)	500Kcmil~3/0
Rated voltage (Group C)(V)	600
Rated current (Group C)(A)	380

### CUL Recognized

Wire Range (Group B)(AWG)	500Kcmil~3/0
Rated voltage (Group B)(V)	600
Rated current (Group B)(A)	380
Wire Range (Group C)(AWG)	500Kcmil~3/0
Rated voltage (Group C)(V)	600
Rated current (Group C)(A)	380

### Drawings



### Approvals

