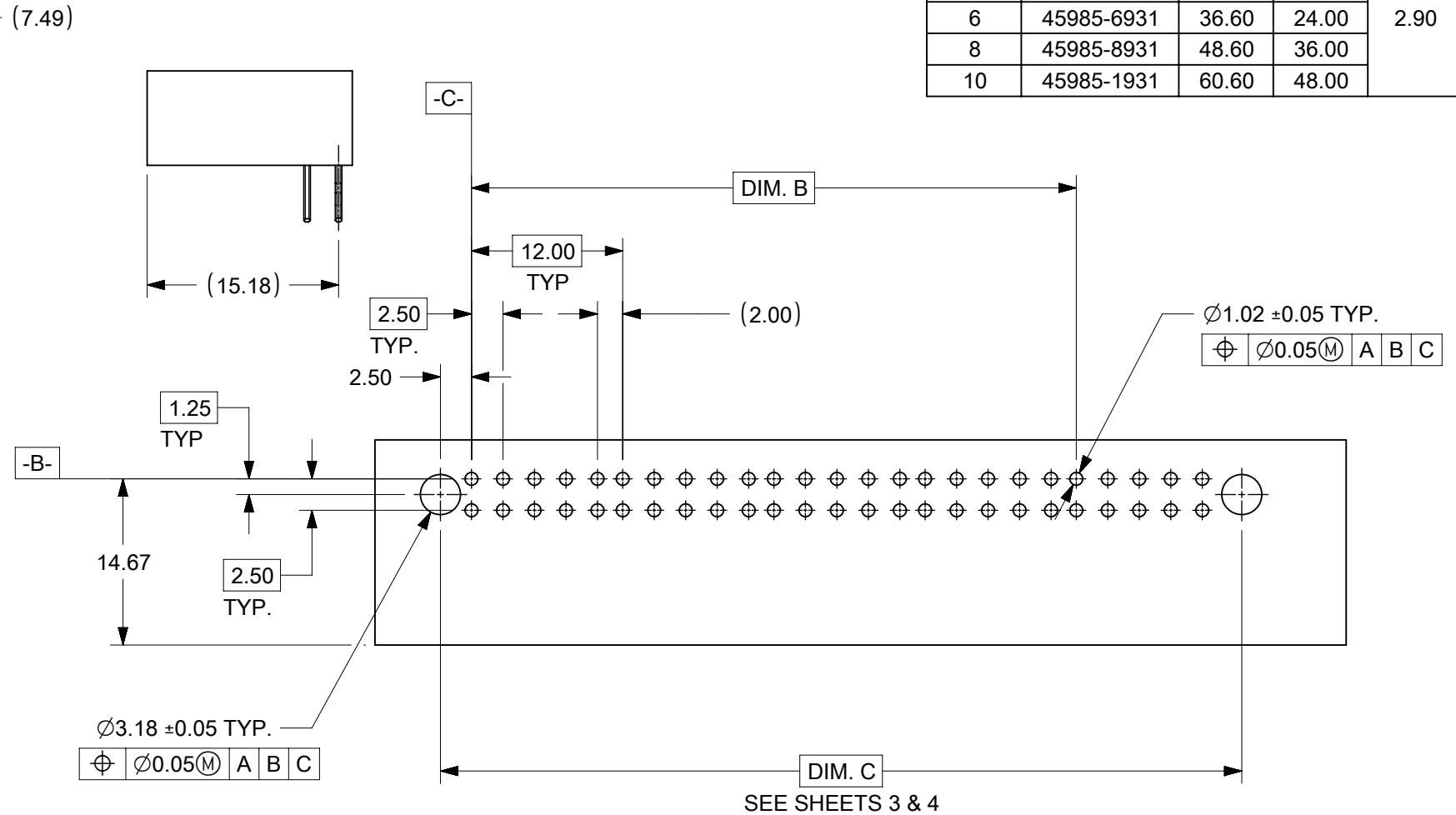
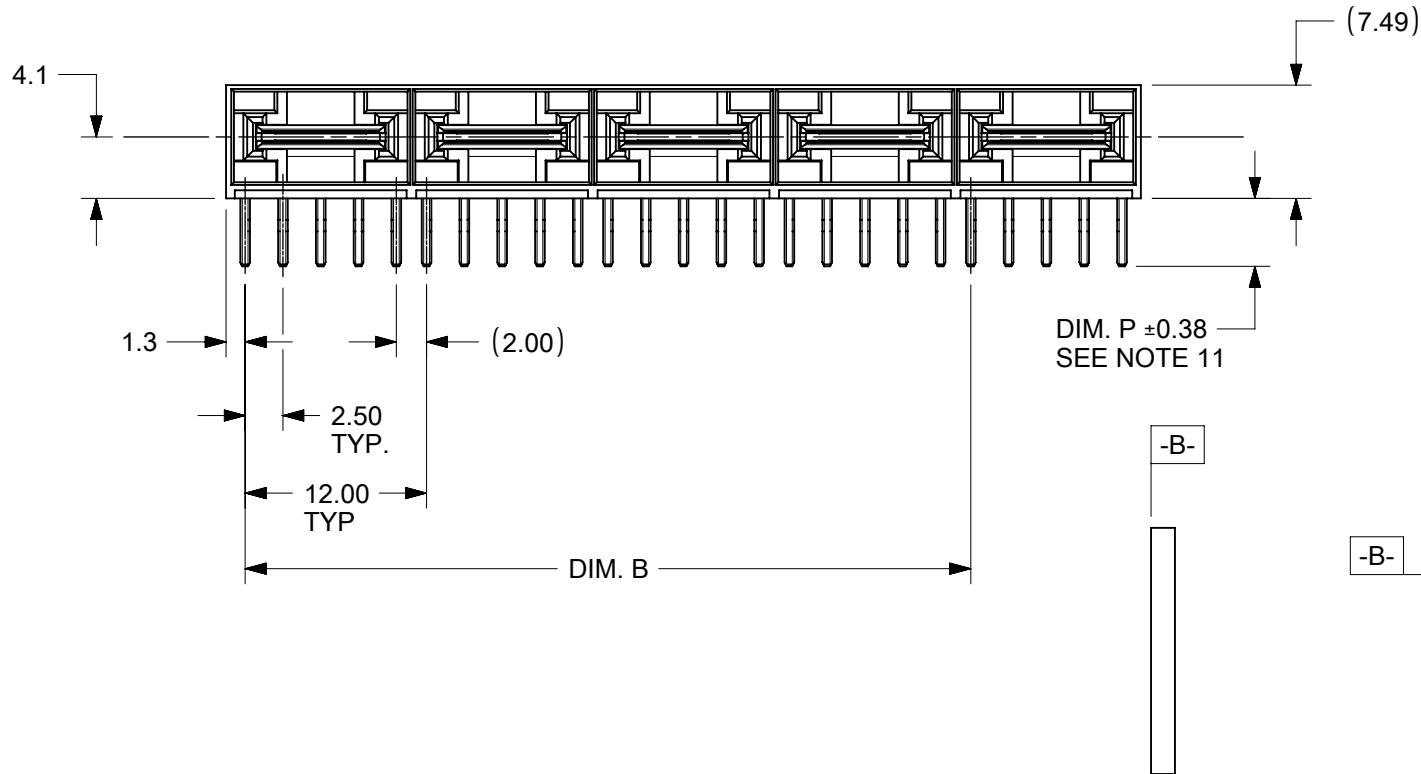


SEE NOTE 10



CKT SIZE	MATERIAL NUMBER	DIM. A REF	DIM B	DIM P
2	45985-2911	12.77	-	4.50
4	45985-4911	24.60	12.00	
6	45985-6911	36.60	24.00	
8	45985-8911	48.60	36.00	
10	45985-1911	60.60	48.00	3.60
2	45985-2921	12.77	-	
4	45985-4921	24.60	12.00	
6	45985-6921	36.60	24.00	
8	45985-8921	48.60	36.00	2.90
10	45985-1921	60.60	48.00	
2	45985-2931	12.77	-	
4	45985-4931	24.60	12.00	
6	45985-6931	36.60	24.00	2.90
8	45985-8931	48.60	36.00	
10	45985-1931	60.60	48.00	

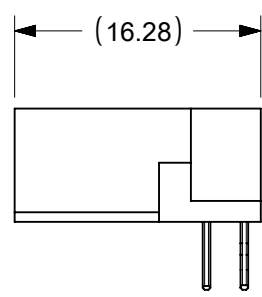
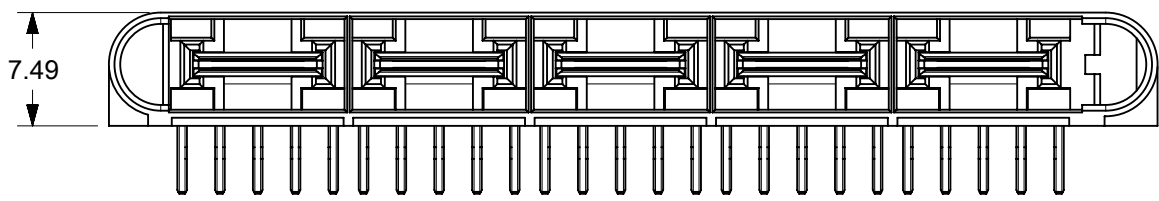
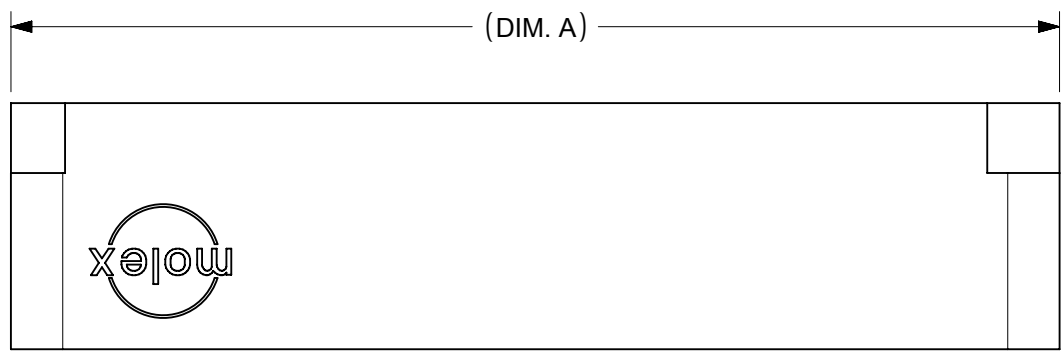
- NOTES:
- MATERIAL:
HOUSING: GLASS FILLED LCP (LIQUID CRYSTAL POLYMER); UL94V-0; COLOR: BLACK
TERMINAL: COPPER ALLOY
 - FINISH: SELECT GOLD: 0.76 MICROMETER/30 MICROINCH MINIMUM, IN CONTACT AREA,
SELECT TIN: 3.81 MICROMETER/150 MICROINCH MINIMUM, IN PC TAIL AREA
BOTH OVER NICKEL: 1.27 MICROMETER/50 MICROINCH MINIMUM.
 - PRODUCT SPECIFICATION: PS-45984-001
 - PACKAGING SPECIFICATION: TRAY PER PK-45984-001
 - SEE SHEET 5 FOR CIRCUIT IDENTIFICATION.
 - PARTS ARE RoHS COMPLIANT.
 - PEG HOLES ARE OPTIONAL. SEE SHEET 3 & 4.
 - MATES WITH MOLEX R/A RECEPTACLE SERIES 45984 OR VERTICAL RECEPTACLE SERIES 46112
 - PARTS CONFORM TO CLASS B REQUIREMENTS OF COSMETIC SPECIFICATION PS-45499-002.
 - DATE CODE (3-DIGIT DAY, 1-DIGIT YEAR) TO BE LOCATED AND PRINTED AS SHOWN.
 - DIM. P TO BE MEASURED FROM THE HOUSING STAND-OFF TO THE TERMINAL TIP.

PCB LAYOUT: COMPONENT SIDE
THICKNESS: SEE CHART

THIS DRAWING CONTAINS INFORMATION THAT IS PROPRIETARY TO MOLEX ELECTRONIC TECHNOLOGIES, LLC AND SHOULD NOT BE USED WITHOUT WRITTEN PERMISSION

DIMENSION UNITS	SCALE	CURRENT REV DESC: ADDED 2 CKT		molex		
mm	2:1					
GENERAL TOLERANCES (UNLESS SPECIFIED)				LPH PLUG ASSEMBLY RIGHT ANGLE POWER CONNECTOR		
	MM	INCH		PRODUCT CUSTOMER DRAWING		
4 PLACES	±	±		DOCUMENT NUMBER		
3 PLACES	±	±		SD-45985-102		
2 PLACES	± 0.25	±		DOC TYPE	DOC PART	REVISION
1 PLACE	±	±		PSD	001	D2
0 PLACES	±	±		SHEET NUMBER		
ANGULAR TOL	± 0.5°			1 OF 5		
DRAFT WHERE APPLICABLE MUST REMAIN WITHIN DIMENSIONS		THIRD ANGLE PROJECTION	DRAWING	SERIES	MATERIAL NUMBER	CUSTOMER
			B-SIZE	45985	SEE TABLE	GENERAL MARKET

EC NO: 646837
DRWN: GSHARMA 2020/08/27
CHK'D: GSHARMA 2020/10/09
APPR: HTHYAGARAJ 2021/05/24
INITIAL REVISION: 2006/05/16
DRWN: BANDURA
APPR: PATEL

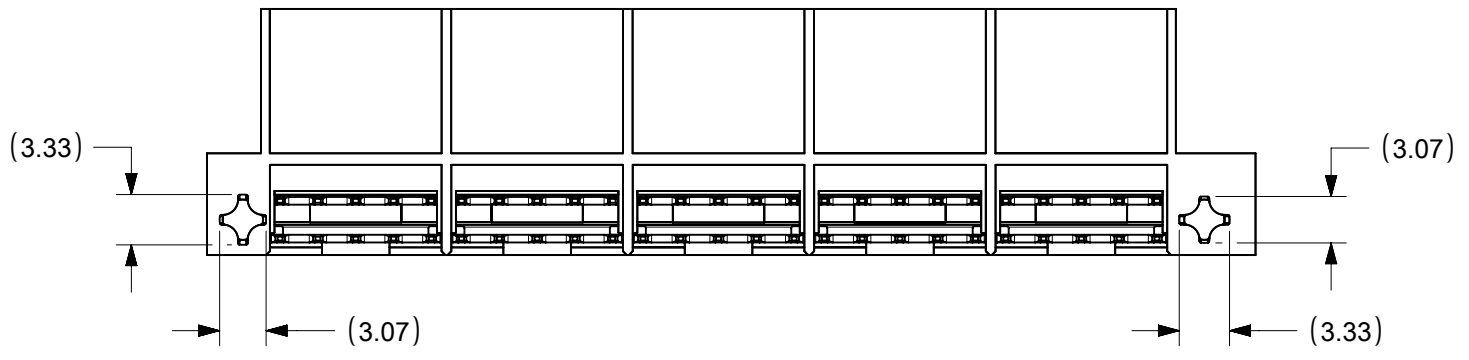
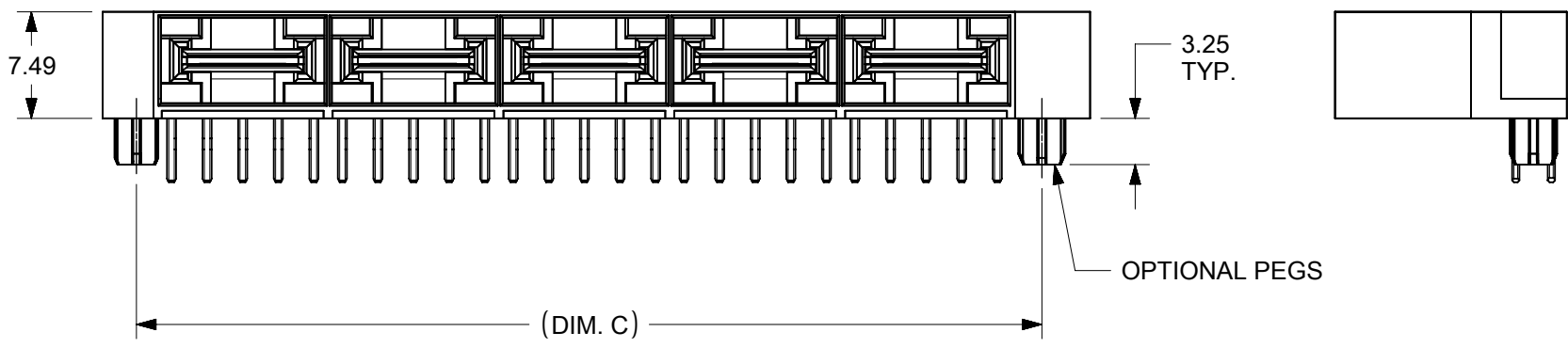
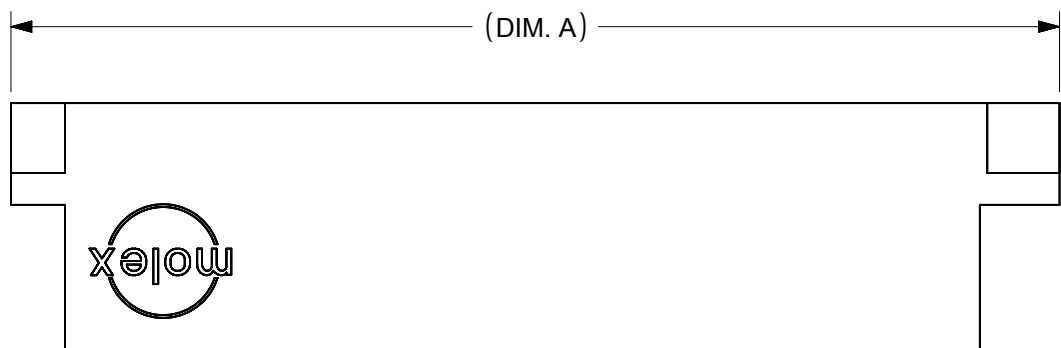


CKT SIZE	MATERIAL NUMBER	DIM. A REF	DIM B	DIM P
2	45985-2912	21.57	-	4.50
4	45985-4912	33.36	12.00	
6	45985-6912	45.36	24.00	
8	45985-8912	57.36	36.00	
10	45985-1912	69.36	48.00	3.60
2	45985-2922	21.57	-	
4	45985-4922	33.36	12.00	
6	45985-6922	45.36	24.00	
8	45985-8922	57.36	36.00	2.90
10	45985-1922	69.36	48.00	
2	45985-2932	21.57	-	
4	45985-4932	33.36	12.00	
6	45985-6932	45.36	24.00	2.90
8	45985-8932	57.36	36.00	
10	45985-1932	69.36	48.00	

NOTE:
1. SEE SHEET 1 FOR DIMENSIONS NOT SHOWN.

THIS DRAWING CONTAINS INFORMATION THAT IS PROPRIETARY TO MOLEX ELECTRONIC TECHNOLOGIES, LLC AND SHOULD NOT BE USED WITHOUT WRITTEN PERMISSION											
DIMENSION UNITS mm		SCALE 2:1		CURRENT REV DESC: ADDED 2 CKT			molex				
GENERAL TOLERANCES (UNLESS SPECIFIED)				EC NO: 646837 DRWN: GSHARMA 2020/08/27 CHK'D: GSHARMA 2020/10/09 APPR: HTHYAGARAJ 2021/05/24							
	MM		INCH				PRODUCT CUSTOMER DRAWING				
4 PLACES	±		±	INITIAL REVISION: DRWN: BANDURA 2006/05/16 APPR: PATEL			DOCUMENT NUMBER SD-45985-102		DOC TYPE PSD	DOC PART 001	REVISION D2
3 PLACES	±		±				DRAFT WHERE APPLICABLE MUST REMAIN WITHIN DIMENSIONS			MATERIAL NUMBER SEE TABLE	
2 PLACES	±	0.25	±	THIRD ANGLE PROJECTION		DRAWING B-SIZE	SERIES 45985				
1 PLACE	±		±								
0 PLACES	±		±								
ANGULAR TOL ± 0.5°											

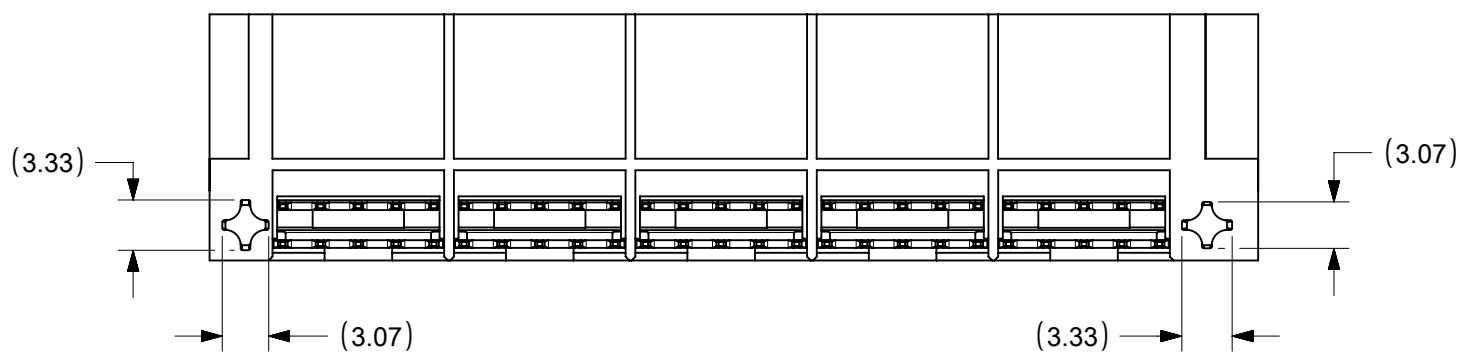
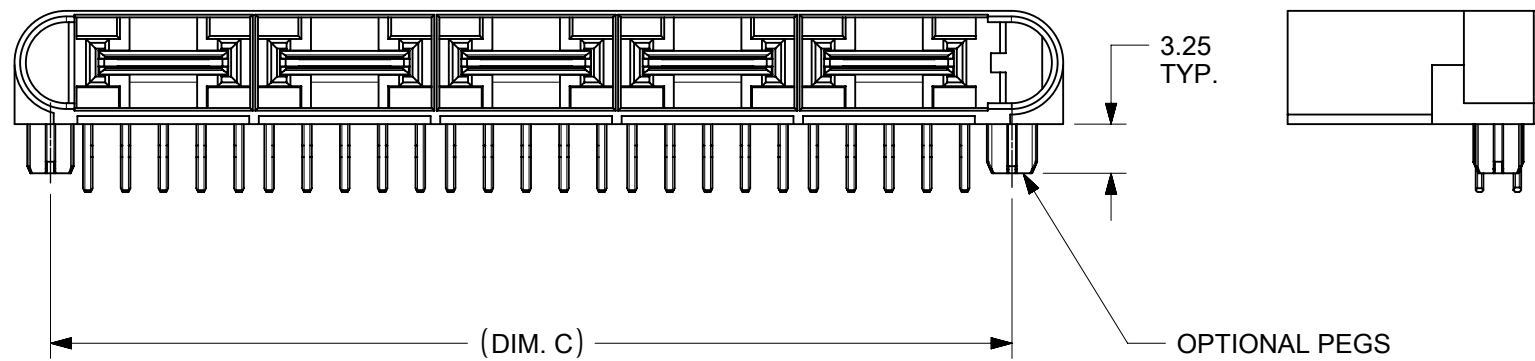
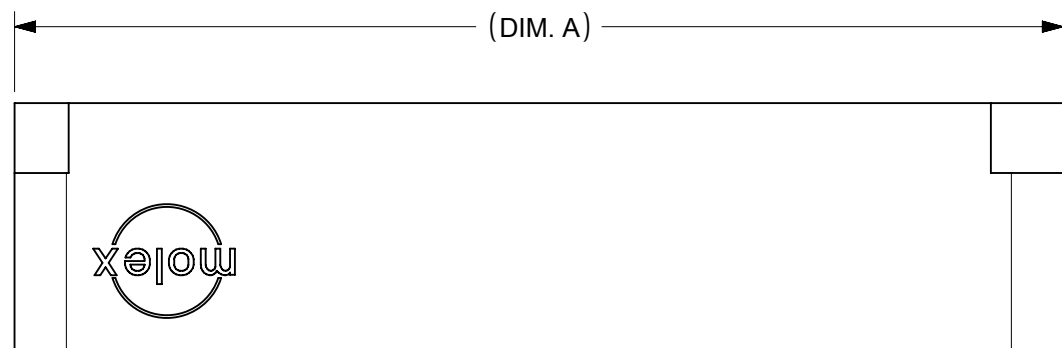
CKT SIZE	MATERIAL NUMBER	DIM. A REF	DIM B	DIM C	DIM P
2	45985-2913	21.57	-	15.60	4.50
4	45985-4913	33.36	12.00	27.60	
6	45985-6913	45.36	24.00	39.60	
8	45985-8913	57.36	36.00	51.60	
10	45985-1913	69.36	48.00	63.60	3.60
2	45985-2923	21.57	-	15.60	
4	45985-4923	33.36	12.00	27.60	
6	45985-6923	45.36	24.00	39.60	
8	45985-8923	57.36	36.00	51.60	2.90
10	45985-1923	69.36	48.00	63.60	
2	45985-2933	21.57	-	15.60	
4	45985-4933	33.36	12.00	27.60	
6	45985-6933	45.36	24.00	39.60	2.90
8	45985-8933	57.36	36.00	51.60	
10	45985-1933	69.36	48.00	63.60	



NOTE:
1. SEE SHEET 1 FOR DIMENSIONS NOT SHOWN.

THIS DRAWING CONTAINS INFORMATION THAT IS PROPRIETARY TO MOLEX ELECTRONIC TECHNOLOGIES, LLC AND SHOULD NOT BE USED WITHOUT WRITTEN PERMISSION																	
DIMENSION UNITS		SCALE		CURRENT REV DESC: ADDED 2 CKT						molex							
mm		1:1															
GENERAL TOLERANCES (UNLESS SPECIFIED)				EC NO: 646837 DRWN: GSHARMA 2020/08/27 CHK'D: GSHARMA 2020/10/09 APPR: HTHYAGARAJ 2021/05/24 INITIAL REVISION: DRWN: BANDURA 2006/05/16 APPR: PATEL						LPH PLUG ASSEMBLY RIGHT ANGLE POWER CONNECTOR							
										PRODUCT CUSTOMER DRAWING							
4 PLACES ±										DOCUMENT NUMBER		DOC TYPE		DOC PART		REVISION	
3 PLACES ±										SD-45985-102		PSD		001		D2	
2 PLACES ± 0.25										MATERIAL NUMBER		CUSTOMER		SHEET NUMBER			
1 PLACE ±				SEE TABLE		GENERAL MARKET		3 OF 5									
0 PLACES ±																	
ANGULAR TOL ± 0.5°				THIRD ANGLE PROJECTION		DRAWING		SERIES									
DRAFT WHERE APPLICABLE MUST REMAIN WITHIN DIMENSIONS						B-SIZE		45985									

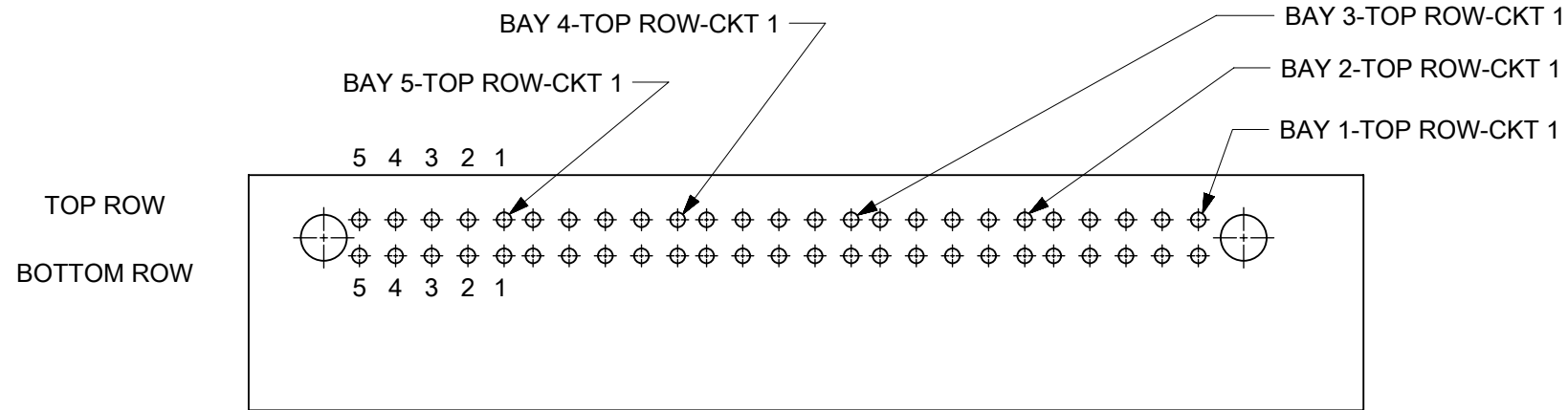
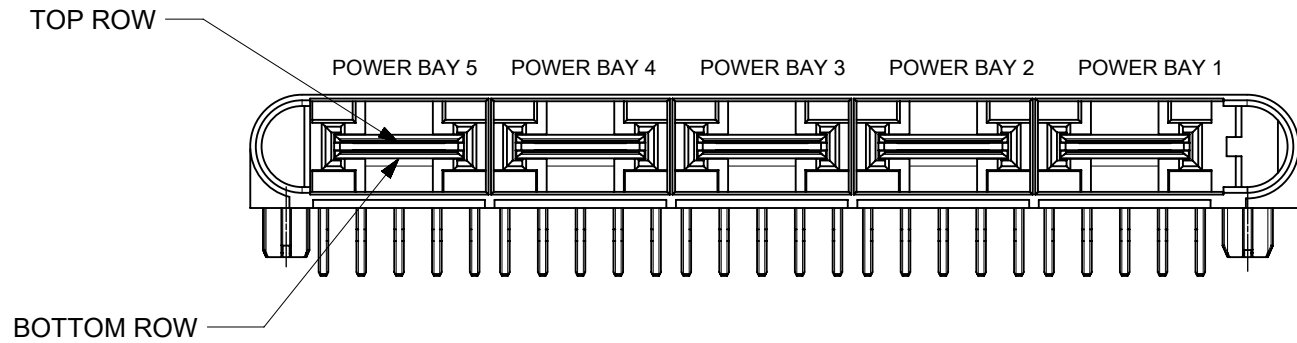
CKT SIZE	MATERIAL NUMBER	DIM. A REF	DIM B	DIM C	DIM P
2	45985-2914	21.57	-	15.60	4.50
4	45985-4914	33.36	12.00	27.60	
6	45985-6914	45.36	24.00	39.60	
8	45985-8914	57.36	36.00	51.60	
10	45985-1914	69.36	48.00	63.60	3.60
2	45985-2924	21.57	-	15.60	
4	45985-4924	33.36	12.00	27.60	
6	45985-6924	45.36	24.00	39.60	
8	45985-8924	57.36	36.00	51.60	2.90
10	45985-1924	69.36	48.00	63.60	
2	45985-2934	21.57	-	15.60	
4	45985-4934	33.36	12.00	27.60	
6	45985-6934	45.36	24.00	39.60	2.90
8	45985-8934	57.36	36.00	51.60	
10	45985-1934	69.36	48.00	63.60	



NOTE:
1. SEE SHEET 1 FOR DIMENSIONS NOT SHOWN.

THIS DRAWING CONTAINS INFORMATION THAT IS PROPRIETARY TO MOLEX ELECTRONIC TECHNOLOGIES, LLC AND SHOULD NOT BE USED WITHOUT WRITTEN PERMISSION												
DIMENSION UNITS		SCALE		CURRENT REV DESC: ADDED 2 CKT				molex				
mm		1:1										
GENERAL TOLERANCES (UNLESS SPECIFIED)				EC NO: 646837 DRWN: GSHARMA 2020/08/27 CHK'D: GSHARMA 2020/10/09 APPR: HTHYAGARAJ 2021/05/24 INITIAL REVISION: DRWN: BANDURA 2006/05/16 APPR: PATEL				PRODUCT CUSTOMER DRAWING				
4 PLACES ±		±						DOCUMENT NUMBER		DOC TYPE	DOC PART	REVISION
3 PLACES ±		±						SD-45985-102		PSD	001	D2
2 PLACES ±		0.25 ±						MATERIAL NUMBER		CUSTOMER		SHEET NUMBER
1 PLACE ±		±						SEE TABLE		GENERAL MARKET		4 OF 5
0 PLACES ±		±										
ANGULAR TOL ± 0.5°				THIRD ANGLE PROJECTION		DRAWING	SERIES					
DRAFT WHERE APPLICABLE MUST REMAIN WITHIN DIMENSIONS						B-SIZE	45985					

CIRCUIT IDENTIFICATION



PCB LAYOUT: COMPONENT SIDE

THIS DRAWING CONTAINS INFORMATION THAT IS PROPRIETARY TO MOLEX ELECTRONIC TECHNOLOGIES, LLC AND SHOULD NOT BE USED WITHOUT WRITTEN PERMISSION												
DIMENSION UNITS		SCALE		CURRENT REV DESC: ADDED 2 CKT				molex				
mm		1:1										
GENERAL TOLERANCES (UNLESS SPECIFIED)				EC NO: 646837 DRWN: GSHARMA 2020/08/27 CHK'D: GSHARMA 2020/10/09 APPR: HTHYAGARAJ 2021/05/24 INITIAL REVISION: DRWN: BANDURA 2006/05/16 APPR: PATEL				PRODUCT CUSTOMER DRAWING				
		MM	INCH					DOCUMENT NUMBER		DOC TYPE	DOC PART	REVISION
4 PLACES	±		±					SD-45985-102		PSD	001	D2
3 PLACES	±		±									
2 PLACES	±	0.25	±									
1 PLACE	±		±									
0 PLACES	±		±									
ANGULAR TOL ± 0.5°				THIRD ANGLE PROJECTION		DRAWING	SERIES	MATERIAL NUMBER	CUSTOMER			
DRAFT WHERE APPLICABLE MUST REMAIN WITHIN DIMENSIONS						B-SIZE	45985	SEE TABLE	GENERAL MARKET			
									SHEET NUMBER			
									5 OF 5			