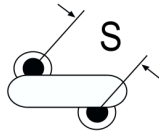
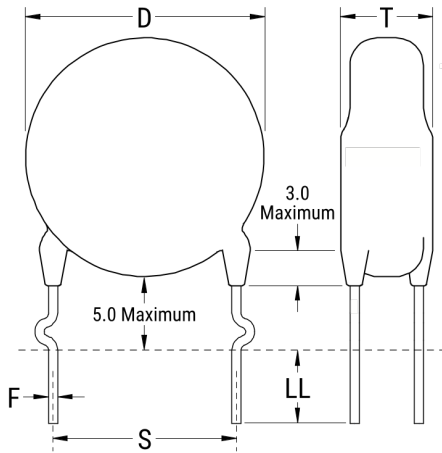


ERP610W222MTFO

Aliases (C835TF222M760X, ERP610VH4220MTFO)

Obsolete

ERP610 SFTY X1-760 Y1-500, Ceramic, 2200 pF, 20%, 760 VAC (X1), 500 VAC (Y1), Y5U, Lead Spacing = 10mm



The measurement position of Lead Spacing (S) and Width (V) is critical in straight lead capacitors.

General Information

Series	ERP610 SFTY X1-760 Y1-500
Style	Radial Disc
Description	Ceramic Single Layer Safety Disc Capacitors
RoHS	Yes
Termination	Tin
Qualifications	UL, CSA, CAN, ENEC, VDE
AEC-Q200	No

Specifications

Capacitance	2200 pF
Capacitance Tolerance	20%
Voltage AC	760 VAC (X1), 500 VAC (Y1)
Temperature Range	-40/+125°C
Temperature Coefficient	Y5U
Dissipation Factor	2.5%
Insulation Resistance	10 GOhms
Safety Class	X1/Y1

Click [here](#) for the 3D model.

Dimensions

D	12mm MAX
T	5mm MAX
S	10mm NOM
LL	5mm +/-1mm
F	0.8mm +/-0.05mm
A	6mm NOM
V	2.1mm +/-0.5mm

Packaging Specifications

Packaging	Bulk, Bag
-----------	-----------