

PRODUCT CHANGE NOTIFICATION

PCN#: COPPER, OUTLETS, SURFACE RACEWAY **20190930-1**

ISSUE DATE: **NA** **EMEA** **LATAM** **AP**/2019

IMPACTED REGIONS: **DISCONTINUATION**

REASON FOR CHANGE: **OTHER**

DESCRIPTION OF CHANGE: Increased maximum operating temperature on Pan-Net jack modules

PanNet jack modules are being modified to provide a higher operating temperature. The higher operating temperature allows for even better handling of next generation Power over Ethernet applications.

External form and fit will be unchanged and visual appearance will be virtually identical.

Affected products include all TG-style jack modules, all DataPatch populated patch panels, and certain related connector accessories (see list of part numbers attached).

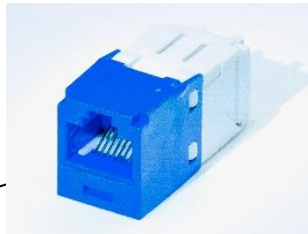
Details of changes are described below and in the following images:

- The material for the front housing is being changed from an ABS to a polycarbonate resin to provide a maximum operating temperature of 75°C for the jack modules. Panduit has worked extensively to match as closely as possible the appearance of the existing material however very minor differences in color shade or surface gloss may be noticeable on some jack colors under certain lighting conditions.
- Minor internal changes have been made and will result in a slight cosmetic difference at the port opening of the jack modules (see images below).
- This PCN does NOT apply to lead frame and TP style jacks (CJ588**, CJ5E88T**, and CJ688TP**).

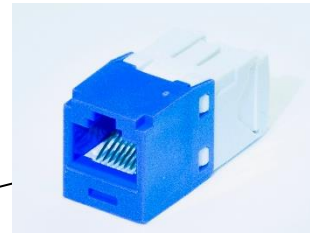
The change will roll out to PanNet jack module product lines and global warehouses over time, beginning on the availability date below and continuing throughout 2019 and into 2020.

Comparison photos of existing and improved Pan-Net jack modules (note difference of housing edge at port opening of Improved Pan-Net jack module):

Existing Pan-Net Jack Module (housing edge steps in)



Improved Pan-Net Jack Module (housing edge is straight)



IMPACTED PART NUMBERS AND REPLACEMENT PART NUMBERS: (where applicable)

[Reference Page 2 / Linked PDF](#)

DATES: DISCONTINUATION AND NEW PRODUCT AVAILABILITY:

SCHEDULE FOR CHANGE	Year (YYYY)	Month (MM)	Day (DD)
New product sample availability date	2019	9	30
Old product discontinuation date*			

***Important:** After old product discontinuation date, the affected part numbers listed above will continue to be available for sale as long as supplies last. Product may be returned up to 60 days after the product continuation date.

IMPACTED PART NUMBER(s)

(* is used below to indicate two-letter color code in part number)
--

- | |
|---|
| Mini-Com UTP Standard TG-style jack modules (CJ5E88TG*, CJ688TG*, CJ6X88TG*) |
| Mini-Com Shielded Standard TG-style jack modules (CJS5E88TG*Y, CJS688TG*Y, CJS6X88TG*Y) |
| Mini-Com UTP Shuttered TG-style jack modules (CJH5E88TG*, CJH688TG*, CJH6X88TG*) |
| Mini-Com Shielded Shuttered TG-style jack modules (CJSH5E88TG*Y, CJSH688TG*Y, CJSH6X88TG*Y) |
| Mini-Com UTP Keyed TG-style jack modules (CJK688TG*, CJK6X88TG*) |
| Mini-Com Shielded Keyed TG-style jack modules (CJSK6X88TG*) |
| Mini-Com UTP 28/30AWG TG-style jack modules (CJT5E88TG*, CJT688TG*, CJT6X88TG*) |
| Mini-Com Shielded 28/30AWG TG-style jack modules (CJT6X88TG*Y) |
| Mini-Com UTP TG-style Couplers (CC5E88*, CC688*, CC6X88*) |
| Break-Away Adapter (BKA6ASD8INBL) |
| DataPatch replacement jack modules (DRJ5E88TGBL, DRJ688TGBL, DRJ6X88TGBL) |
| DataPatch DP5e angled punchdown patch panels (DPA245E88TGY, DPA485E88TGY) |
| DataPatch DP5e flat punchdown patch panels (DP125E88TGY, DP245E88TGY, DP485E88TGY) |
| DataPatch DP6 PLUS angled punchdown patch panels (DPA24688TGY, DPA48688TGY) |
| DataPatch DP6 PLUS flat punchdown patch panels (DP12688TGY, DP24688TGY, DP48688TGY) |
| DataPatch DP6A 10Gig angled punchdown patch panels (DPA246X88TGY, DPA486X88TGY) |
| DataPatch DP6A 10Gig flat punchdown patch panels (DP246X88TGY, DP486X88TGY) |

Note: The change will roll out to PanNet jack module product lines and global warehouses over time, beginning on the specified availability date and continuing throughout 2019.
--