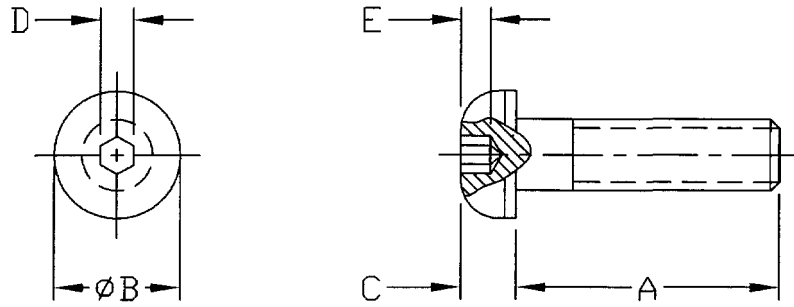


1. PART NUMBER AND CHARACTERISTICS



TE Part No	Rev	Thread	A	B	C	D	E
1655785-1	A	M4	8	7.6	2.2	2.5	1.3
1655785-2	A	M4	12	7.6	2.2	2.5	1.3
1655785-3	A	M4	16	7.6	2.2	2.5	1.3
1655785-4	A	M6	8	10.5	3.3	4	2.08
1655785-5	A	M6	12	10.5	3.3	4	2.08
1655785-6	A	M6	16	10.5	3.3	4	2.08
1655785-7	A	M6	20	10.5	3.3	4	2.08
1655785-8	A	M6	30	10.5	3.3	4	2.08
1655785-9	B	M3	6	5.7	1.65	2	1.04
1-1655785-0	B	M3	8	5.7	1.65	2	1.04
1-1655785-1	B	M3	12	5.7	1.65	2	1.04
1-1655785-2	B	M3	16	5.7	1.65	2	1.04
1-1655785-3	B	M4	6	7.6	2.2	2.5	1.3
1-1655785-4	B	M5	6	9.5	2.75	3	1.56
1-1655785-5	B	M5	8	9.5	2.75	3	1.56
1-1655785-6	B	M5	12	9.5	2.75	3	1.56
1-1655785-7	B	M5	16	9.5	2.75	3	1.56
1-1655785-8	B	M5	20	9.5	2.75	3	1.56
1-1655785-9	B	M5	30	9.5	2.75	3	1.56
2-1655785-0	B	M8	12	14	4.4	5	2.6
2-1655785-1	B	M8	16	14	4.4	5	2.6
2-1655785-2	B	M8	20	14	4.4	5	2.6
2-1655785-3	B	M8	25	14	4.4	5	2.6
2-1655785-4	B	M8	30	14	4.4	5	2.6
2-1655785-5	B	M8	40	14	4.4	5	2.6

COMMERCIAL ITEM SPECIFICATION			MATERIAL							
			See Note 1.2.							
© 2010 Tyco Electronics Corporation, Berwyn, PA All Rights Reserved			FINISH							
			Zinc w/Clear Chromate							
G Add -36 and -37 JNB 08DEC10 REV ENGINEERING CHANGE CHK DATE					DIMENSIONS IN mm		NO	REV	LOC	DIST
							1655785	G	B	31
			SHEET 1 OF 2		TITLE					
					SCREW, CAP, BUTTON SOCKET HEAD, METRIC SERIES					

1. PART NUMBER AND CHARACTERISTICS (Continued)

TE Part No	Rev	Thread	A	B	C	D	E
2-1655785-6	B	M10	16	17.5	5.5	6	3.12
2-1655785-7	B	M10	20	17.5	5.5	6	3.12
2-1655785-8	B	M10	30	17.5	5.5	6	3.12
2-1655785-9	B	M10	40	17.5	5.5	6	3.12
3-1655785-0	B	M12	20	21	6.6	8	4.16
3-1655785-1	B	M12	30	21	6.6	8	4.16
3-1655785-2	B	M12	40	21	6.6	8	4.16
3-1655785-3	D	M4	20	7.6	2.2	2.5	1.3
3-1655785-4	E	M3	5	5.7	1.65	2	1.04
3-1655785-5	F	M6	25	10.5	3.3	4	2.08
3-1655785-6	G	M6	14	10.5	3.3	4	2.08
3-1655785-7	G	M6	40	10.5	3.3	4	2.08

- 1.1. Shall comply with ASME B18.3.4M and ISO 7380
- 1.2. Material shall be steel that meets or exceeds ISO Standard 898/1, Class 10.9
- 2. MANUFACTURER
None



Tyco Electronics
Corporation
Berwyn, PA

SHEET
2 OF 2

NO

1655785

REV
G

LOC
B

DIST
31