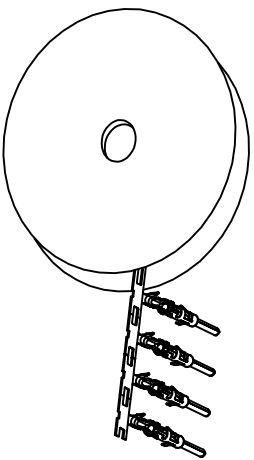


REVISIONS				
REV	ECO	DESCRIPTION	DATE	BY APPR
A1	-	RELEASED DRAWING	Jul-16-18	Flan Tommy

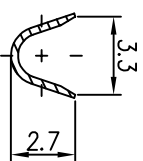
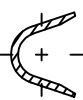
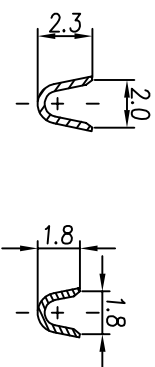
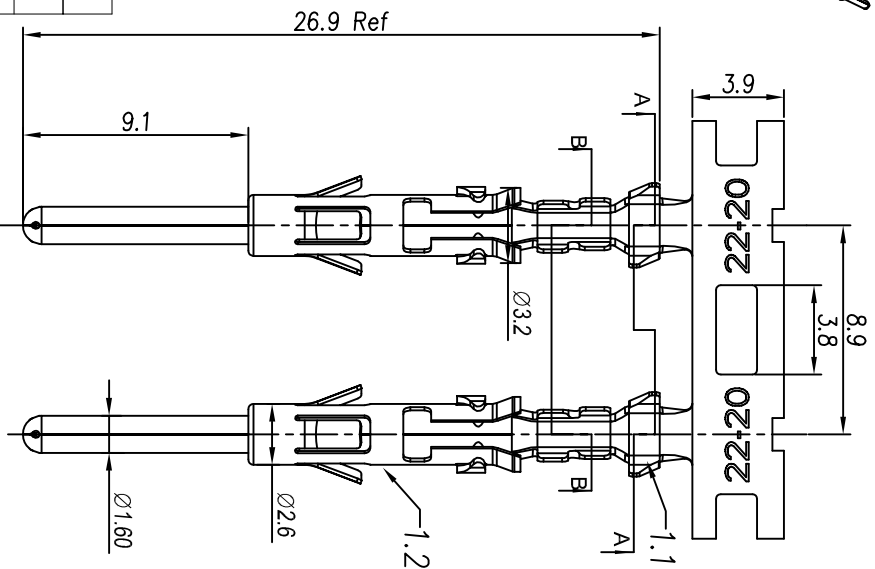


CONTACT ORIENTATION ON ROLL(3000PCS/COIL)

NOTES : (UNLESS OTHERWISE SPECIFIED)

- MATERIAL :
 - CONTACT BODY : COPPER ALLOY.
 - OUTER SPRING : STAINLESS STEEL.
- SPECIFICATIONS :
 - CURRENT RATING : 13A MAX.
 - TERMINATION TYPE : CRIMPING.
 - WIRE RANGE : 22~20AWG.
 - WIRE INSULATION DIA(MAX) : ϕ 2.5mm.
- RoHS COMPLIANT.
- ALL DIMENSIONS ARE FOR REFERENCE USE ONLY.
- AVAILABLE TOOLS :
 - HAND CRIMPER : MFX-3954.
 - CRIMP APPLICATOR : MFX-3957.
 - EXTRACTION TOOL : QXRT16.

P/N	CONTACT PLATING(MATING AREA)
SP20M2T	TIN PLATING OVER NICKEL.
SP20M2N	NICKEL PLATING OVER COPPERIZE.
SP20M2F	GOLD FLASH PLATING OVER NICKEL.
SP20M2G5	5 μ "GOLD PLATING OVER NICKEL.
SP20M2G10	10 μ "GOLD PLATING OVER NICKEL.
SP20M2G15	15 μ "GOLD PLATING OVER NICKEL.
SP20M2G30	30 μ "GOLD PLATING OVER NICKEL.



SECTION A-A

SECTION B-B

QUANTITY	PART NUMBER	DESCRIPTION	ITEM
MATERIALS LIST			
UNLESS OTHERWISE SPECIFIED 1) All dimensions are in millimeters. 2) Tolerances are as follows: 1 PL, DEC 20, 30 Fractions, 1/16" 3 PL, DEC 20, 30 Fractions, 1/16" 3) Note reference = Δ		SIGNATURES DATE DRAWN: Flan Jul-16-18 CHECKED: Tom Jul-16-18 ENGINEER: Tom Jul-16-18 APPROVAL: Tommy Jul-16-18 CUSTOMER: Sine Systems	
PROCESS SPECIFICATIONS: NEXT ASSY:		MATERIAL SPECIFICATIONS: TEST SPECIMENS SURFACE FINISH SPECIFICATIONS AND PERFORMANCE DATA SHALL BE THE PROPERTY OF SINE SYSTEMS. THE MANUFACTURING VARIATIONS OF REPRODUCTION ARE LITLED. ALL MANUFACTURING VARIATIONS SHALL BE THE PROPERTY OF SINE SYSTEMS. SCALE: NONE	
ECO-MATE PIN CONTACT, STAMPED, 22-20AWG, SIZE 16		Sine Systems - www.amphenol-sine.com 44724 Morley Drive Clinton Township, MI 48036	
SIZE	TYPE	DWG NO	REVISION
B	C-	SP20M2XX	A1
SHEET	1	OF	1