

## Enlarger

MxxMxxPA

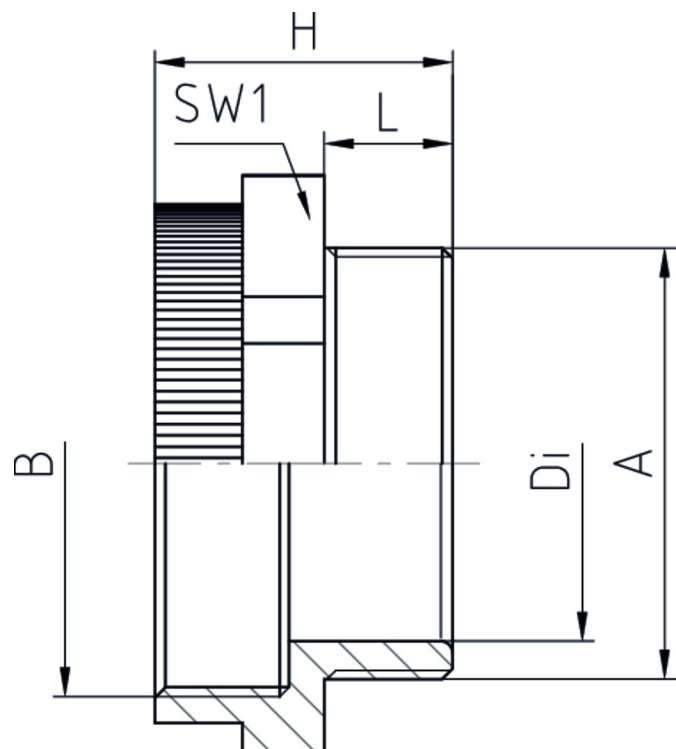
<b>Enlarger</b>	Polyamide PA6 GF30
<b>External thread</b>	metric, as per EN 60423
<b>Internal thread</b>	metric, as per EN 60423



## Properties


<b>Temperature range</b>	-30 °C +100 °C
<b>Protection grade</b>	dependent on the combination with other components

- enlarger for threaded or clearance holes to larger thread size




## Features

 RAL 9005

A	B	L	SW1	H	Di	 VPE	Part No.
M16x1,5	M20x1,5	8	24	20,5	11	100	M16M20PA/SW
M20x1,5	M25x1,5	8	30	21	15	100	M20M25PA/SW
M25x1,5	M32x1,5	8	37	23	19	50	M25M32PA/SW

 RAL 7035

A	B	L	SW1	H	Di	 VPE	Part No.
M12x1,5	M16x1,5	8	20	20,5	7	100	M12M16PA
M16x1,5	M20x1,5	8	24	20,5	11	100	M16M20PA
M20x1,5	M25x1,5	8	30	21	15	100	M20M25PA
M25x1,5	M32x1,5	8	37	23	19	50	M25M32PA
M32x1,5	M40x1,5	10	45	25	26	50	M32M40PA