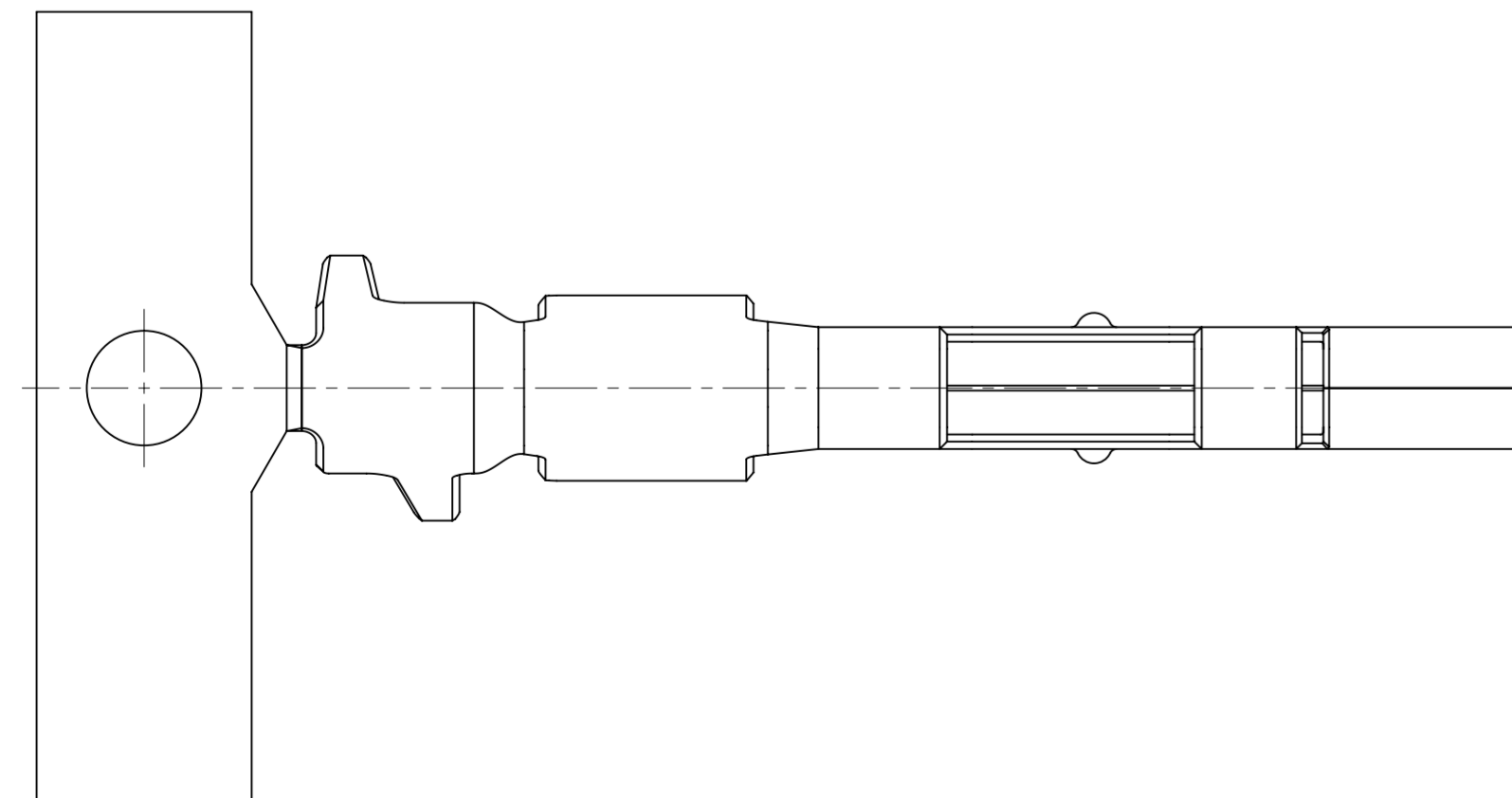
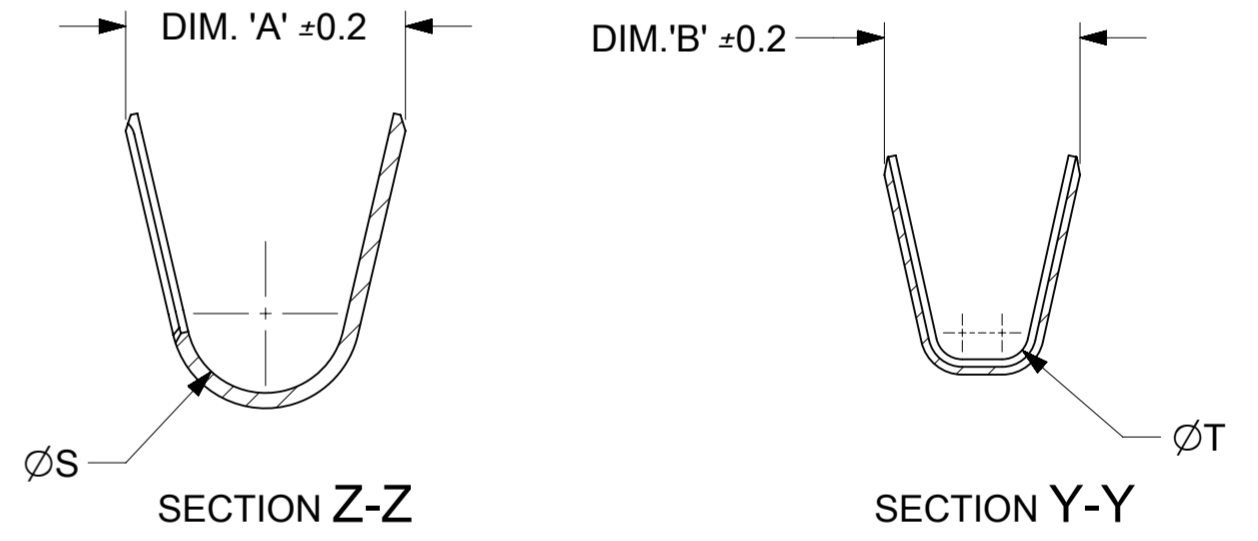
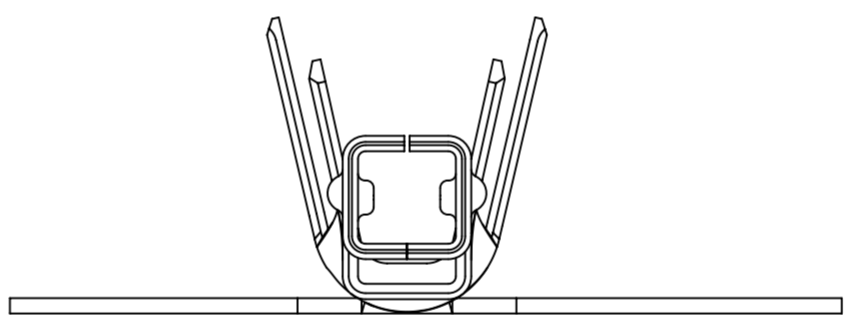
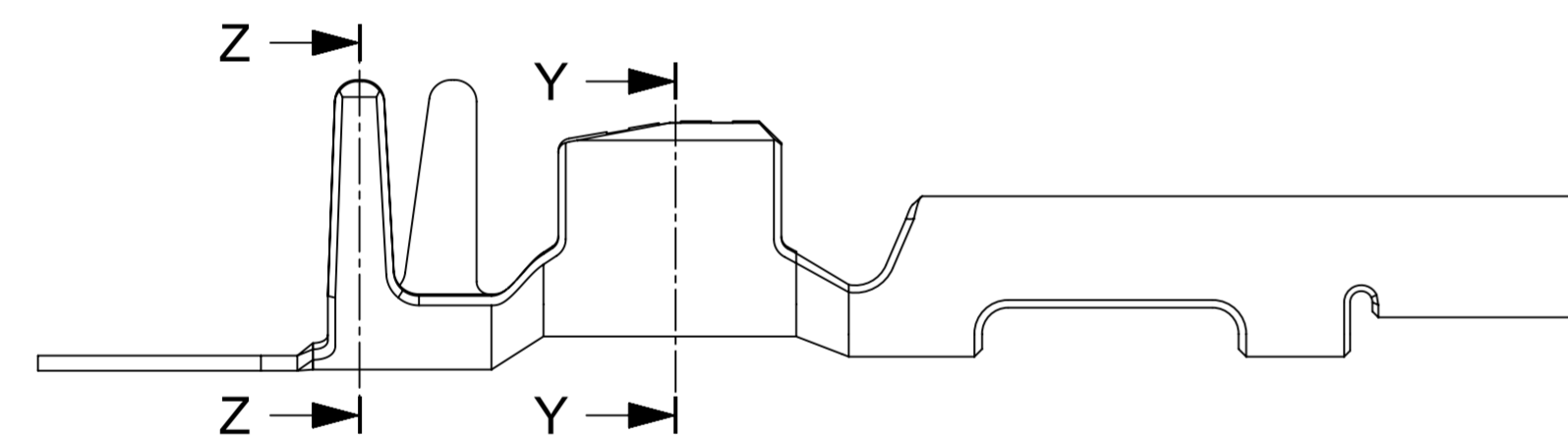


- NOTES:
1. MATERIAL: COPPER ALLOY
  2. PLATING: 100µin MIN. OVERALL MATTE TIN OVER 50µin MIN. OVERALL MATTE NICKEL.
  3. PRODUCT SPECIFICATION: 2077760000-PS
  4. APPLICATION SPECIFICATION: 207776000-AS
  5. PACKAGING SPEC: REEL PACK PER: 2077770000-PK
  6. THIS CRIMP TERMINAL TO BE USED WITH ASSEMBLY SERIES 207782
  7. THIS CRIMP TERMINAL MATES WITH PLUG CRIMP TERMINAL SERIES,
    - a. 2077770001 MATES WITH 2077760001
    - b. 2077770002 MATES WITH 2077760002
  8. THIS PART CONFORMS TO CLASS 'B' REQUIREMENTS OF COSMETIC SPEC PS-45499-002
  9. WIRE SPECIFICATION: SEE CHART
  10. CRIMP TOOLING:
    - APPLICATOR PART NUMBER: REFER 2077760000-AS
    - HAND TOOL PART NUMBER: REFER 2077760000-AS



TERMINAL PART NO.	WIRE AWG	INSULATION DIA	A	B	S	T
2077770001	16AWG	1.9 - 2.4	3.7	2.6	2.1	0.7
2077770002	18-20AWG	1.46 - 2.1	2.7	2.0	1.6	0.6

THIS DRAWING CONTAINS INFORMATION THAT IS PROPRIETARY TO MOLEX ELECTRONIC TECHNOLOGIES, LLC AND SHOULD NOT BE USED WITHOUT WRITTEN PERMISSION

DIMENSION UNITS	SCALE	CURRENT REV DESC:				<b>molex</b>			
mm	10:1								
GENERAL TOLERANCES (UNLESS SPECIFIED)		EC NO: 625539				RECEPTACLE CRIMP TERMINAL SQUBA 3.6			
ANGULAR TOL	± °	DRWN: MUM 2019/08/22							
4 PLACES	±	CHK'D: ARAJUGOVINDA 2019/10/11				PRODUCT CUSTOMER DRAWING			
3 PLACES	±	APPR: NCSR 2019/10/11							
2 PLACES	±	INITIAL REVISION:				DOCUMENT NUMBER			
1 PLACE	± 0.2	DRWN: MUM 2019/01/31				2077770000-SD			
0 PLACES	±	APPR: NCSR 2019/07/03				DOC TYPE   DOC PART   REVISION			
DRAFT WHERE APPLICABLE MUST REMAIN WITHIN DIMENSIONS		THIRD ANGLE PROJECTION	DRAWING	SERIES	MATERIAL NUMBER	CUSTOMER	SHEET NUMBER		
			A2-SIZE	207777	SEE TABLE	GENERAL MARKET	1 OF 1		