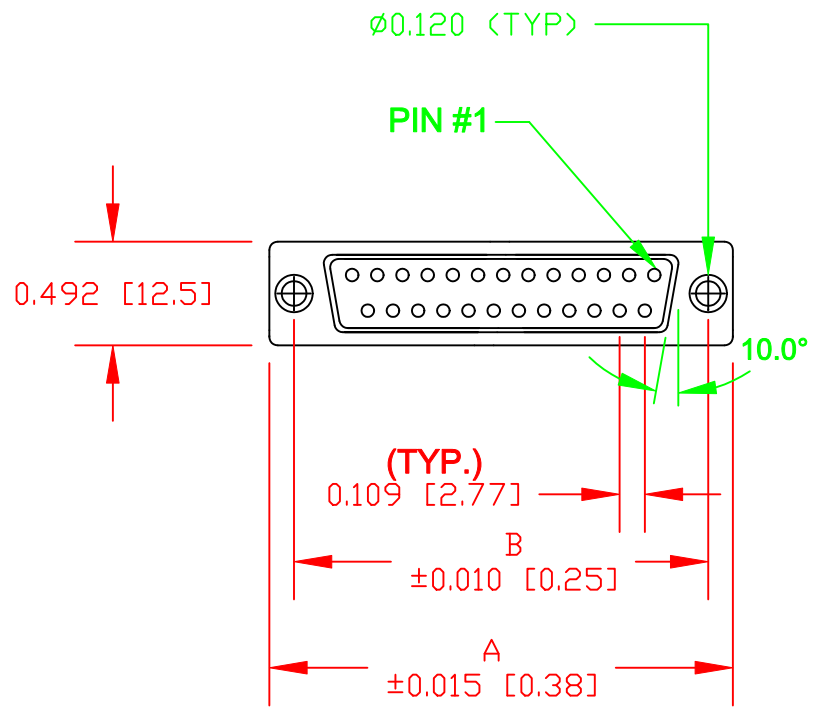
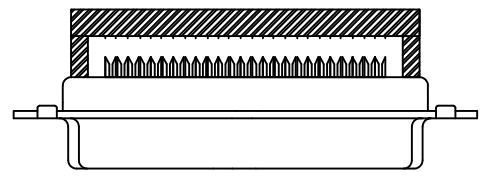
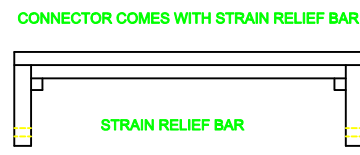
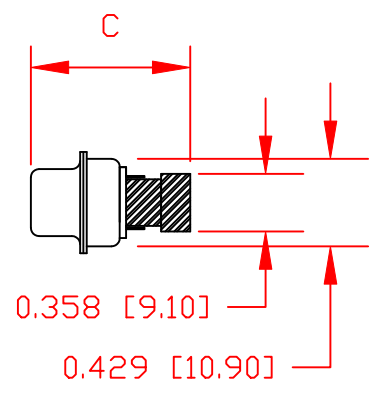


25 POSITION SHOWN FOR REFERENCE



TERMINATED



SPECIFICATIONS:

MATERIALS:

- SHELL: STEEL, TIN PLATED
- INSULATOR: UL 94V-0 RATED POLYESTER, GLASFILLED, BLACK
- CONTACTS: COPPER ALLOY

ELECTRICAL:

- CURRENT RATING: 1.5 AMP
- CONTACT RESISTANCE: 10 mOHMS MAX
- INSULTOR RESISTANCE: 5000 MOHMS MIN
- VOLTAGE: 500V AC FOR 1 MINUTE
- TEMPERATURE: -55°C TO +125°C

184AYYY-292LYY1

SERIES \_\_\_\_\_

POSITIONS \_\_\_\_\_

009 \_\_\_\_\_

015 \_\_\_\_\_

025 \_\_\_\_\_

037 \_\_\_\_\_

GENDER \_\_\_\_\_

1 = MALE

2 = FEMALE

TERMINATION \_\_\_\_\_

9 = IDC

SHELL PLATING \_\_\_\_\_

2= TIN

HARDWARE OPTIONS \_\_\_\_\_

00 = NO HARDWARE

01 = .065 4-40 CLINCH NUT BOARD SIDE

PLATING OPTIONS \_\_\_\_\_

1 = GOLD FLASH

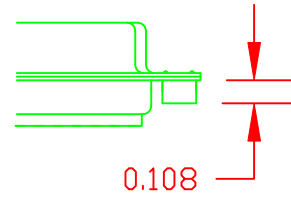
	A	B	C CLOSED	C OPEN
9	1.213	0.984	0.610	0.728
	30.81	25.00	15.50	18.50
15	1.541	1.312	0.610	0.728
	39.14	33.33	15.50	18.50
25	2.087	1.852	0.610	0.728
	53.00	47.04	15.50	18.50
37	2.729	2.500	0.610	0.728
	69.32	63.50	15.50	18.50

ACCEPTS: 28 AWG STRANDED .050" CENTER FLAT RIBBON CABLE


RoHS COMPLIANT

	THESE DRAWINGS AND SPECIFICATIONS ARE THE PROPERTY OF NorComp AND SHALL NOT BE REPRODUCED, COPIED OR USED AS THE BASIS FOR THE MANUFACTURE OF SALE OF APPARATUS WITHOUT WRITTEN PERMISSION.		DRAWN: <b>M. SIGMON</b>	DATE: <b>04-04-11</b>
			CHECKED:	DATE:
<h1>NorComp</h1>		SCALE: 1:1	SHEET 1 OF 2	REV 1
		DWG NO. <b>184AYYY-292LYY1</b>		

CLINCH-NUTS ARE 4-40 INTERNAL THREADS



01X ..... .108" (BOARD SIDE) - CN1

	THESE DRAWINGS AND SPECIFICATIONS ARE THE PROPERTY OF NorComp AND SHALL NOT BE REPRODUCED, COPIED OR USED AS THE BASIS FOR THE MANUFACTURE OF SALE OF APPARATUS WITHOUT WRITTEN PERMISSION.	DRAWN: M. SIGMON		DATE: 04-05-11	
		CHECKED:		DATE:	
<b>NorComp</b>	SCALE:	SHEET 2	OF 2	REV 1	
	DWG NO. 184AYYY-292LYY1				