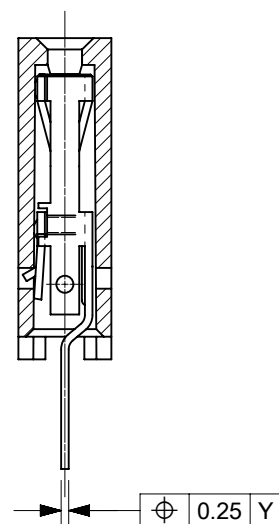


RECOMMENDED P.C. BOARD
HOLE PATTERN
FOR STRAIGHT PINS.

NOTES:

1. CONTACT-PLATED PHOSPHOR BRONZE.
2. HOUSING-15% GLASS FILLED POLYESTER.
COLOUR: BLACK.
3. FOR 0.635/[.025] SQ. MALE PINS THE LENGTH
MUST BE 5.65/[.222] MIN & 7.00/[.276] MAX. TO
ENSURE GOOD CONNECTION WITH CONTACT.
4. PRODUCT SPECIFICATION: PS-99020-0001.
5. PCB THICKNESS 1.6MM



SECTION C-C
SHOWING STRAIGHT PINS.

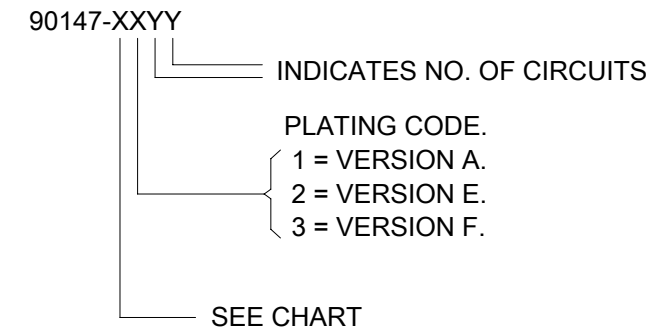
THIS DRAWING CONTAINS INFORMATION THAT IS PROPRIETARY TO MOLEX ELECTRONIC TECHNOLOGIES, LLC AND SHOULD NOT BE USED WITHOUT WRITTEN PERMISSION									
DIMENSION UNITS MM/INCH		SCALE 5:1		CURRENT REV DESC: MIGRATED TO NX					
GENERAL TOLERANCES (UNLESS SPECIFIED)				molex C-GRID III, SINGLE ROW VERTICAL P.C. BOARD CONNECTOR ASSEMBLY. PRODUCT CUSTOMER DRAWING					
	MM	INCH							
4 PLACES	±	±							
3 PLACES	±	±							
2 PLACES	±	±							
1 PLACE	±	±		EC NO: 613447		DRWN: ABABU01		2019/03/06	
0 PLACES	±	±		CHK'D: NMANE02		2019/03/11		APPR: MRAMAKRISHNA	
ANGULAR TOL ± 2.0°				INITIAL REVISION:		DRWN: DB		1987/07/14	
DRAFT WHERE APPLICABLE MUST REMAIN WITHIN DIMENSIONS				THIRD ANGLE PROJECTION		DRAWING		SERIES	
				B-SIZE		90147		MATERIAL NUMBER	
DOCUMENT STATUS				CUSTOMER		SEE TABLE		GENERAL MARKET	
P1				RELEASE DATE		2019/03/11		07:13:20	
				SHEET NUMBER		1 OF 2			

PART NO'S - STRAIGHT PINS		NO. OF CKTS.	A	B ^{+0.00} -0.30 [B ^{+0.000} -.012]	QTY. PER TUBE
STANDARD	CUSTOMER SPECIFIC				
90147-1X02	_____	2	2.54/[.100]	5.08/[.200]	105
90147-1X03	_____	3	5.08/[.200]	7.62/[.300]	72
90147-1X04	_____	4	7.62/[.300]	10.16/[.400]	52
90147-1X05	90147-9105	5	10.16/[.400]	12.70/[.500]	44
90147-1X06	_____	6	12.70/[.500]	15.24/[.600]	36
90147-1X07	_____	7	15.24/[.600]	17.78/[.700]	30
90147-1X08	_____	8	17.78/[.700]	20.32/[.800]	26
90147-1X09	_____	9	20.32/[.800]	22.86/[.900]	22
90147-1X10	_____	10	22.86/[.900]	25.40/[1.000]	22
90147-1X11	_____	11	25.40/[1.000]	27.94/[1.100]	20
90147-1X12	_____	12	27.94/[1.100]	30.48/[1.200]	18
90147-1X13	_____	13	30.48/[1.200]	33.02/[1.300]	16
90147-1X14	_____	14	33.02/[1.300]	35.56/[1.400]	14
90147-1X15	_____	15	35.56/[1.400]	38.10/[1.500]	14
90147-1X16	_____	16	38.10/[1.500]	40.64/[1.600]	13
90147-1X17	_____	17	40.64/[1.600]	43.18/[1.700]	13
90147-1X18	_____	18	43.18/[1.700]	45.72/[1.800]	12
90147-1X19	_____	19	45.72/[1.800]	48.26/[1.900]	12
90147-1X20	_____	20	48.26/[1.900]	50.80/[2.000]	11
90147-1X21	_____	21	50.80/[2.000]	53.34/[2.100]	11
90147-1X22	_____	22	53.34/[2.100]	55.88/[2.200]	10
90147-1X23	_____	23	55.88/[2.200]	58.42/[2.300]	9
90147-1X24	_____	24	58.42/[2.300]	60.96/[2.400]	9
90147-1X25	_____	25	60.96/[2.400]	63.50/[2.500]	8
90147-1X26	_____	26	63.50/[2.500]	66.04/[2.600]	8
90147-1X27	_____	27	66.04/[2.600]	68.58/[2.700]	8
90147-1X28	_____	28	68.58/[2.700]	71.12/[2.800]	7
90147-1X29	_____	29	71.12/[2.800]	73.66/[2.900]	7
90147-1X30	_____	30	73.66/[2.900]	76.20/[3.000]	7
90147-1X31	_____	31	76.20/[3.000]	78.74/[3.100]	7
90147-1X32	_____	32	78.74/[3.100]	81.28/[3.200]	6

PLATING VERSION A
 PRE-PLATED HOT DIP TIN
 1.0 TO 2.5 µm [.000040" TO .000100"].

PLATING VERSION E
 1.27 TO 1.78 µm [.000050" TO .000070"] NICKEL
 OVERALL, 0.38 TO 0.64 µm [.000015" TO .000025"]
 GOLD ON CONTACT AREA (OVER NICKEL).
 3 TO 5 µm [.000120" TO .000200"] TIN
 ON SOLDER TAILS (OVER NICKEL).

PLATING VERSION F.
 1.27 TO 1.78 µm [.000050" TO .000070"] NICKEL
 OVERALL, 0.76 TO 1.0 µm [.000030" TO .000040"]
 GOLD ON CONTACT AREA (OVER NICKEL).
 3 TO 5 µm [.000120" TO .000200"] TIN
 ON SOLDER TAILS (OVER NICKEL).



STANDARD PRODUCTS

THIS DRAWING CONTAINS INFORMATION THAT IS PROPRIETARY TO MOLEX ELECTRONIC TECHNOLOGIES, LLC AND SHOULD NOT BE USED WITHOUT WRITTEN PERMISSION									
DIMENSION UNITS MM/INCH		SCALE 1:1		CURRENT REV DESC: MIGRATED TO NX				molex	
GENERAL TOLERANCES (UNLESS SPECIFIED)				EC NO: 613447					
4 PLACES ±		3 PLACES ±		2 PLACES ±		1 PLACE ±		0 PLACES ±	
ANGULAR TOL ± 2.0°		DRAFT WHERE APPLICABLE MUST REMAIN WITHIN DIMENSIONS		THIRD ANGLE PROJECTION		DRAWING		SERIES	
DOCUMENT NUMBER SDA-90147		DOC TYPE PSD		DOC PART 001		REVISION AD1		SHEET NUMBER 2 OF 2	
MATERIAL NUMBER SEE TABLE		CUSTOMER GENERAL MARKET		DRAWING B-SIZE		SERIES 90147		SHEET NUMBER 2 OF 2	

PART NO'S - STRAIGHT PINS	NO. OF CKTS	DIM. "A"	DIM. "B" (+0.00) [±] -0.02	QTY. PER TUBE
90147-1X02	2	(2.54) .100	(5.08) .200	105
03	3	(5.08) .200	(7.62) .300	72
04	4	(7.62) .300	(10.16) .400	52
05	5	(10.16) .400	(12.70) .500	44
06	6	(12.70) .500	(15.24) .600	36
07	7	(15.24) .600	(17.78) .700	30
08	8	(17.78) .700	(20.32) .800	26
09	9	(20.32) .800	(22.86) .900	22
10	10	(22.86) .900	(25.40) 1.000	22
11	11	(25.40) 1.000	(27.94) 1.100	20
12	12	(27.94) 1.100	(30.48) 1.200	18
13	13	(30.48) 1.200	(33.02) 1.300	16
14	14	(33.02) 1.300	(35.56) 1.400	14
15	15	(35.56) 1.400	(38.10) 1.500	14
16	16	(38.10) 1.500	(40.64) 1.600	13
17	17	(40.64) 1.600	(43.18) 1.700	13
18	18	(43.18) 1.700	(45.72) 1.800	12
19	19	(45.72) 1.800	(48.26) 1.900	12
20	20	(48.26) 1.900	(50.80) 2.000	11
21	21	(50.80) 2.000	(53.34) 2.100	11
22	22	(53.34) 2.100	(55.88) 2.200	10
23	23	(55.88) 2.200	(58.42) 2.300	9
24	24	(58.42) 2.300	(60.96) 2.400	9
25	25	(60.96) 2.400	(63.50) 2.500	8
26	26	(63.50) 2.500	(66.04) 2.600	8
27	27	(66.04) 2.600	(68.58) 2.700	8
28	28	(68.58) 2.700	(71.12) 2.800	7
29	29	(71.12) 2.800	(73.66) 2.900	7
30	30	(73.66) 2.900	(76.20) 3.000	7
31	31	(76.20) 3.000	(78.74) 3.100	7
90147-1X32	32	(78.74) 3.100	(81.28) 3.200	6

PLATING VERSION A

PRE-PLATED HOT DIP TIN
1.0 TO 2.5 um (.000040" TO .000100").

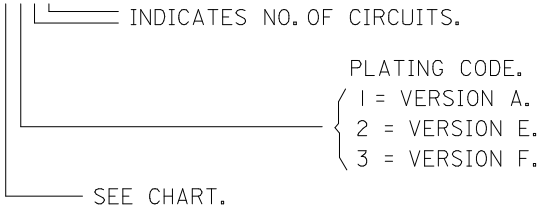
PLATING VERSION E

1.27 TO 1.78 um (.000050" TO .000070") NICKEL
OVERALL, 0.38 TO 0.64 um (.000015" TO .000025")
GOLD ON CONTACT AREA (OVER NICKEL).
3 TO 5 um (.000120" TO .000200") TIN
ON SOLDER TAILS (OVER NICKEL).

PLATING VERSION F.

1.27 TO 1.78 um (.000050" TO .000070") NICKEL
OVERALL, 0.76 TO 1.0 um (.000030" TO .000040")
GOLD ON CONTACT AREA (OVER NICKEL).
3 TO 5 um (.000120" TO .000200") TIN
ON SOLDER TAILS (OVER NICKEL).

90147-XXYY



STANDARD PRODUCTS

UPDATE REVISION EC NO: S2013-0792 DRW:ATSEE 2013/05/13 CHKD:SKANG 2013/05/15 APPR:MLONG 2013/05/16	QUALITY SYMBOLS	GENERAL TOLERANCES (UNLESS SPECIFIED)	DIMENSION STYLE MM/IN	SCALE NTS	DESIGN UNITS METRIC	THIRD ANGLE PROJECTION																														
	$F_A=0$ $F_G=0$ $F_P=0$	<table border="1"> <tr><th></th><th>mm</th><th>INCH</th></tr> <tr><td>4 PLACES</td><td>± ---</td><td>± ---</td></tr> <tr><td>3 PLACES</td><td>± ---</td><td>± ---</td></tr> <tr><td>2 PLACES</td><td>± ---</td><td>± ---</td></tr> <tr><td>1 PLACE</td><td>± ---</td><td>± ---</td></tr> <tr><td>0 PLACE</td><td>±</td><td>±</td></tr> </table>		mm	INCH	4 PLACES	± ---	± ---	3 PLACES	± ---	± ---	2 PLACES	± ---	± ---	1 PLACE	± ---	± ---	0 PLACE	±	±	<table border="1"> <tr><th>DRAWN BY</th><th>DATE</th></tr> <tr><td>DB</td><td>1986/12/28</td></tr> <tr><th>CHECKED BY</th><th>DATE</th></tr> <tr><td>JDENNEHY</td><td>2005/07/07</td></tr> <tr><th>APPROVED BY</th><th>DATE</th></tr> <tr><td>JDENNEHY</td><td>2005/07/07</td></tr> </table>	DRAWN BY	DATE	DB	1986/12/28	CHECKED BY	DATE	JDENNEHY	2005/07/07	APPROVED BY	DATE	JDENNEHY	2005/07/07	TITLE		
		mm	INCH																																	
	4 PLACES	± ---	± ---																																	
3 PLACES	± ---	± ---																																		
2 PLACES	± ---	± ---																																		
1 PLACE	± ---	± ---																																		
0 PLACE	±	±																																		
DRAWN BY	DATE																																			
DB	1986/12/28																																			
CHECKED BY	DATE																																			
JDENNEHY	2005/07/07																																			
APPROVED BY	DATE																																			
JDENNEHY	2005/07/07																																			
AC	ANGULAR ± 2 °	SEE TABLE	MATERIAL NO.	DOCUMENT NO.	SHEET NO.																															
	DRAFT WHERE APPLICABLE MUST REMAIN WITHIN DIMENSIONS																																			

C-GRID III SINGLE ROW
VERTICAL P.C. BOARD
CONNECTOR

molex

SDA-90147

1 OF 1

THIS DRAWING CONTAINS INFORMATION THAT IS PROPRIETARY TO MOLEX INCORPORATED AND SHOULD NOT BE USED WITHOUT WRITTEN PERMISSION