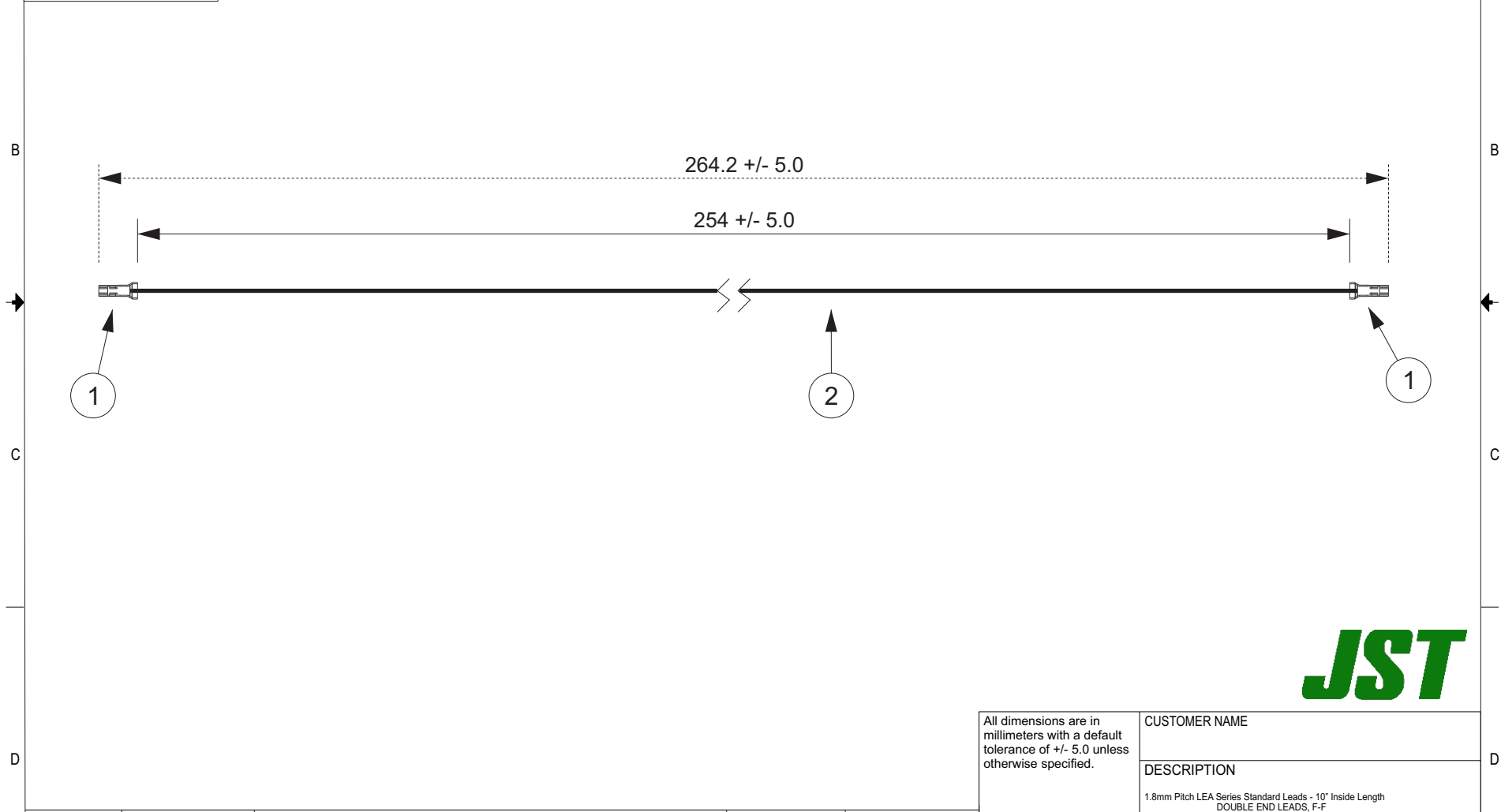


THIS DRAWING CONTAINS INFORMATION THAT IS PROPRIETARY TO J.S.T. AND SHALL NOT BE USED OR SHOWN WITHOUT WRITTEN PERMISSION.

1	2	3	4	5	6	7	8	
Item No.	Part No.	Description						APPLICABLE HOUSINGS
1	SSFH-001T-P0.5	LEA Connector Contact						NO. OF CIRCUITS
2	UL1061, 22 AWG	Black						HOUSING PART NO.
							2	
							LEAR-02V-S	

<u>Electrical Specifications</u>
Current: 3.0A AC/DC
Voltage: 300V AC/DC



All dimensions are in millimeters with a default tolerance of +/- 5.0 unless otherwise specified.		CUSTOMER NAME	
		DESCRIPTION	
		1.8mm Pitch LEA Series Standard Leads - 10" Inside Length DOUBLE END LEADS, F-F	
Drawn By: Larissa Mosley	SIZE	CUSTOMER PART NO.	PART NO.
Checked By: Steven Pilkington	SCALE	ALEALE22K254	REV
	1:1	DRAWING NO. GAM-336	DATE 5/1/2018

ZONE	REV	DESCRIPTION	DATE	APPROVED
1	1	Add Electrical Specifications	6/29/2018	LM

1 2 3 4 5 6 7 8