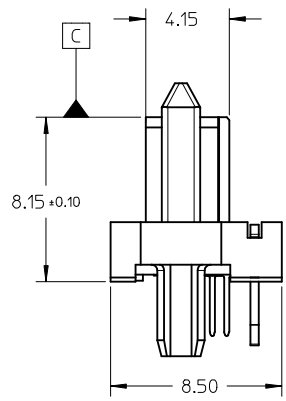
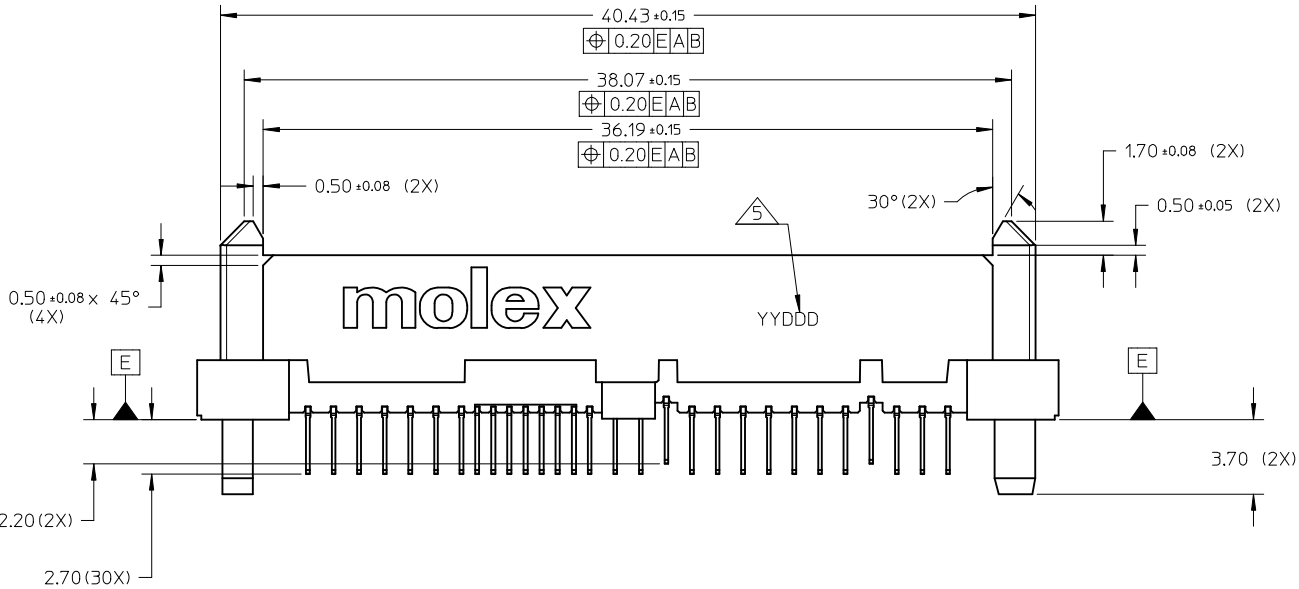


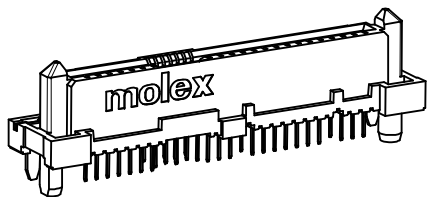
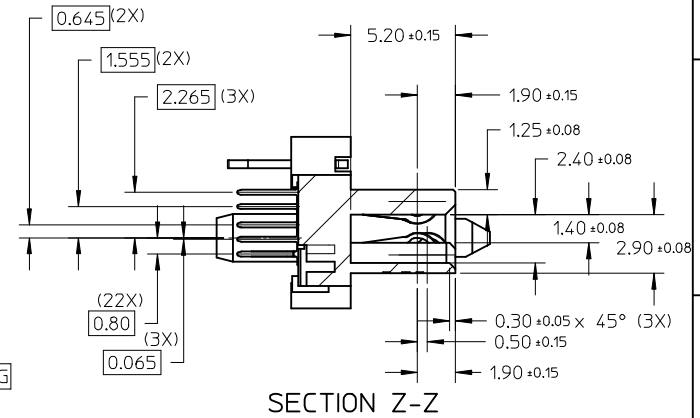
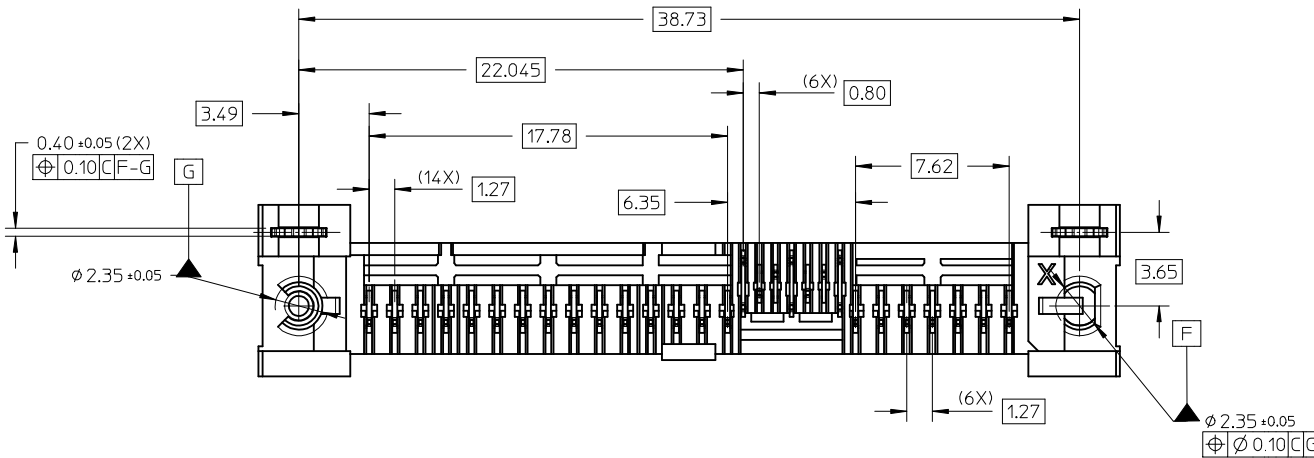
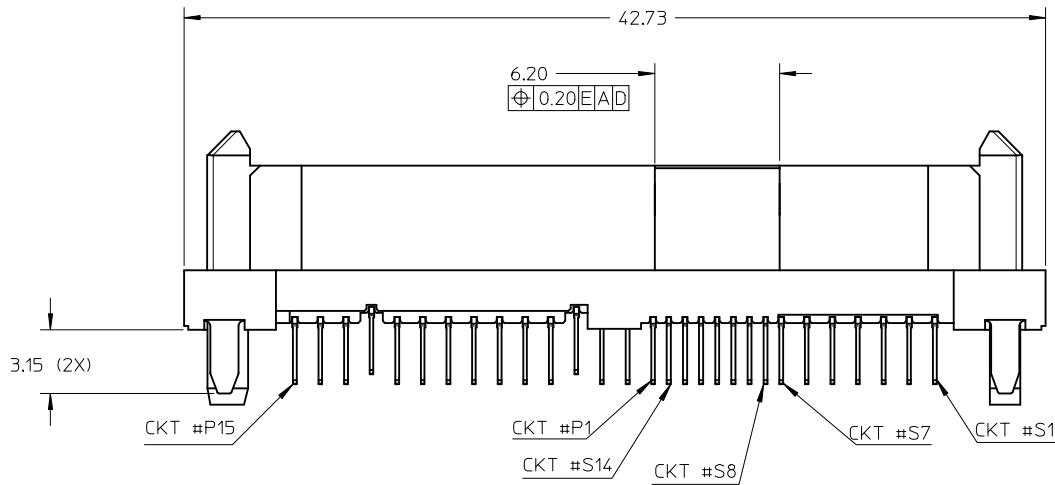
NOTES:

1. MATERIALS:
HOUSING: LCP, GLASS FILLED, UL 94V-0, COLOR: BLACK
TERMINAL: COPPER ALLOY
2. FINISHES:
CONTACT: 0.76µm MIN, SELECTIVE GOLD OVER 1.27µm MIN NICKEL UNDERPLATE
SOLDERTAIL: 2.54µm MIN MATTE TIN OVER 1.27µm MIN NICKEL UNDERPLATE.
3. PRODUCT SPECIFICATION: PS-78719-001
4. PACKAGING SPECIFICATION: PK-78719-001
5. MOLEX LOGO AND DATE CODE TO BE LOCATED APPROXIMATELY AS SHOWN.
6. MATES WITH SFF8482, SAS8680 PLUG, SATA PLUG
7. THIS PRODUCT COMPLIANT TO RoHS DIRECTIVE WITH THE FOLLOWING BANNED SUBSTANCES - LEAD, MERCURY, CADMIUM, HEXAVALENT CHROMIUM, POLYBROMINATED BIPHENYLS AND POLYBROMINATED DIPHENYLS ETHERS.
8. CORING AT NON FUNCTIONAL AREA ARE SUBJECTED TO CHANGES WITHOUT NOTICES.



| | | | | | | | |
|---|------------------|--|---|---|-------|--------------|------------------------|
| INITIAL RELEASE EC NO: S2013-0600 DRWN:CGOH 2013/03/05 CHKD:SCHEONG 2013/03/21 APPR:BOKKOK 2013/04/03 | DESCRIPTION 1 | QUALITY SYMBOLS | GENERAL TOLERANCES (UNLESS SPECIFIED) | DIMENSION STYLE | SCALE | DESIGN UNITS | THIRD ANGLE PROJECTION |
| | | $F_A=0$ $F_G=0$ $F_P=0$ | mm INCH 4 PLACES ± --- ± --- 3 PLACES ± --- ± --- 2 PLACES ± 0.20 ± --- 1 PLACE ± --- ± --- 0 PLACE ± --- ± --- | MM ONLY | NTS | METRIC | |
| | | ANGULAR ± 3 ° DRAFT WHERE APPLICABLE MUST REMAIN WITHIN DIMENSIONS | DRAWN BY: CGOH DATE: 2013/03/05 CHECKED BY: SCHEONG DATE: 2013/03/21 APPROVED BY: BOKKOK DATE: 2013/04/03 | TITLE SAS RECEPTACLE STANDARD HEIGHT THRU-HOLE RECEPTACLE | | | |
| | | MATERIAL NO. 78719-0001 | DOCUMENT NO. SD-78719-001 | SHEET NO. 1 OF 3 | | | |

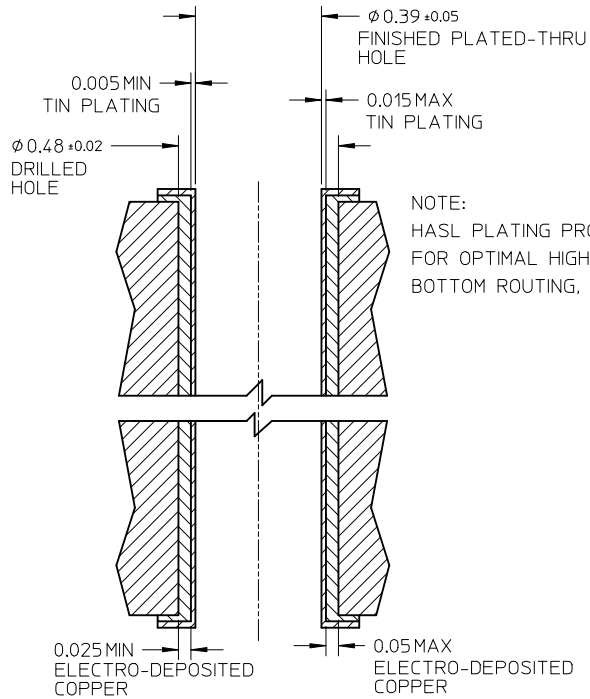
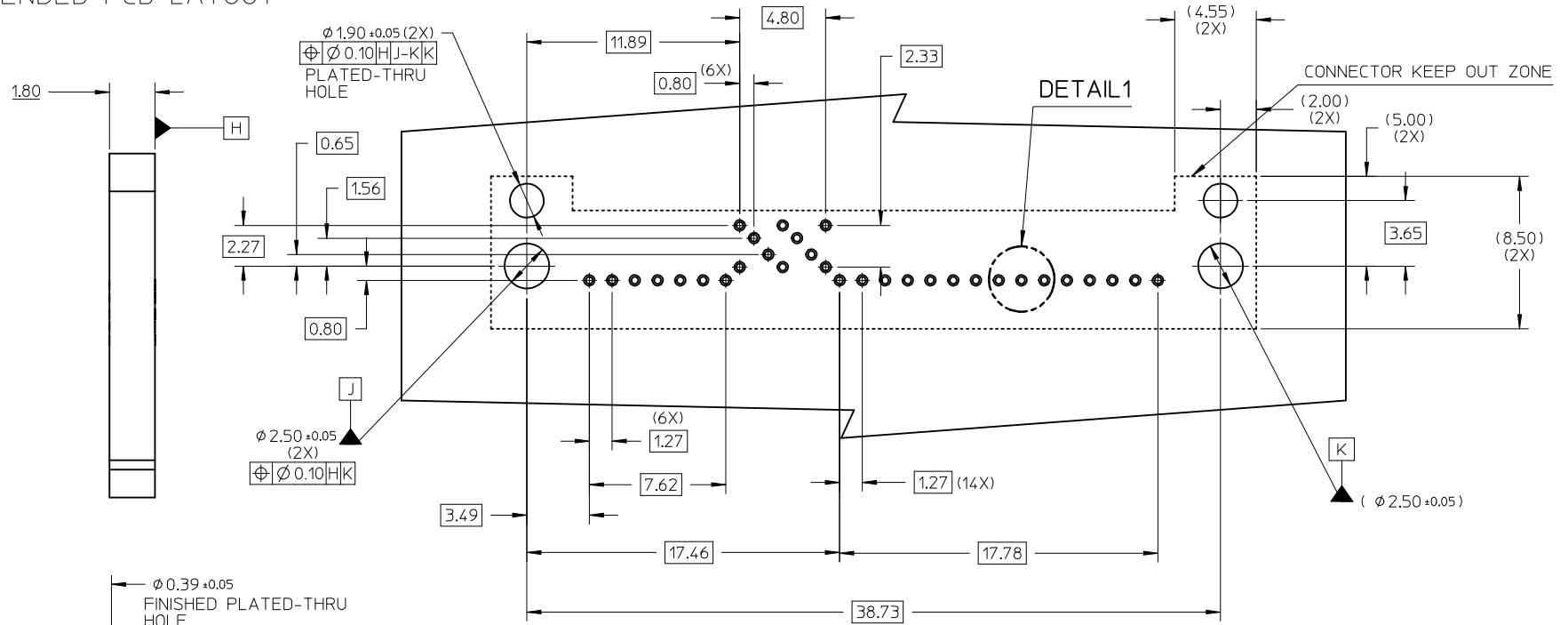
10 9 8 7 6 5 4 3 2 1



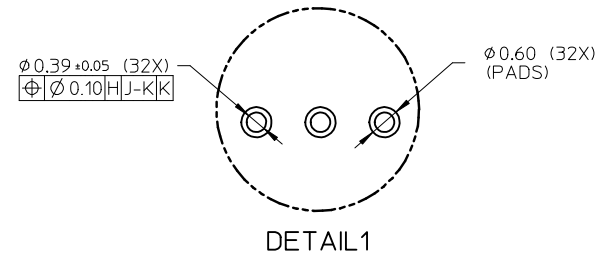
| | | | | | | | | |
|--|--|------------------|---|--|------------------------------|---|--------------|------------------------|
| INITIAL RELEASE EC NO: S2013-0600 DRWN:CGOH CHKD:SCHEONG APPR:BOKKOK | 2013/03/05 2013/03/21 2013/04/03 | DESCRIPTION 1 | QUALITY SYMBOLS | GENERAL TOLERANCES (UNLESS SPECIFIED) | DIMENSION STYLE | SCALE | DESIGN UNITS | THIRD ANGLE PROJECTION |
| | | | $\nabla_A = 0$ $\nabla_E = 0$ $\nabla_F = 0$ | mm INCH | MM ONLY | NTS | METRIC | |
| | | | 4 PLACES ± --- ± --- 3 PLACES ± --- ± --- 2 PLACES ± 0.20 ± --- 1 PLACE ± --- ± --- 0 PLACE ± --- ± --- | DRAWN BY: CGOH DATE: 2013/03/05 CHECKED BY: SCHEONG DATE: 2013/03/21 APPROVED BY: BOKKOK DATE: 2013/04/03 | TITLE | SAS RECEPTACLE STANDARD HEIGHT THRU-HOLE RECEPTACLE | | |
| | | | ANGULAR ± 3° DRAFT WHERE APPLICABLE MUST REMAIN WITHIN DIMENSIONS | MATERIAL NO. 78719-0001 | DOCUMENT NO. SD-78719-001 | SHEET NO. 2 OF 3 | | |

9 8 7 6 5 4 3 2 1

RECOMMENDED PCB LAYOUT



NOTE:
HASL PLATING PROCESS FOR THE PLATED THRU HOLE IS NOT RECOMMENDED.
FOR OPTIMAL HIGH SPEED ELECTRICAL PERFORMANCE,
BOTTOM ROUTING, THINNER PCBs AND/ OR BACK DRILLING IS RECOMMENDED.



| | | | | | | | | | |
|--|--|---------------------------------------|---|----------------------------|--|------------------------|--|--|--|
| INITIAL RELEASE EC NO: S2013-0600 DRWN:CGOH 2013/03/05 CHKD:SCHEONG 2013/03/21 APPR:BOKOK 2013/04/03 | QUALITY SYMBOLS $F_A=0$ $F_G=0$ $F_P=0$ | GENERAL TOLERANCES (UNLESS SPECIFIED) | | DIMENSION STYLE MM ONLY | SCALE NTS | DESIGN UNITS METRIC | THIRD ANGLE PROJECTION | | |
| | | mm | INCH | DRAWN BY | DATE | TITLE | | | |
| | | 4 PLACES | ± --- | ± --- | CGOH | 2013/03/05 | SAS RECEPTACLE STANDARD HEIGHT THRU-HOLE RECEPTACLE | | |
| | | 3 PLACES | ± --- | ± --- | CHEONG | 2013/03/21 | molex MATERIAL NO. 78719-0001 DOCUMENT NO. SD-78719-001 SHEET NO. 3 OF 3 | | |
| 2 PLACES | ± 0.20 | ± --- | APPROVED BY | DATE | | | | | |
| 1 PLACE | ± --- | ± --- | BOKOK | 2013/04/03 | THIS DRAWING CONTAINS INFORMATION THAT IS PROPRIETARY TO MOLEX INCORPORATED AND SHOULD NOT BE USED WITHOUT WRITTEN PERMISSION | | | | |
| 0 PLACE | ± --- | ± --- | ANGULAR ± 3° DRAFT WHERE APPLICABLE MUST REMAIN WITHIN DIMENSIONS | | | | | | |