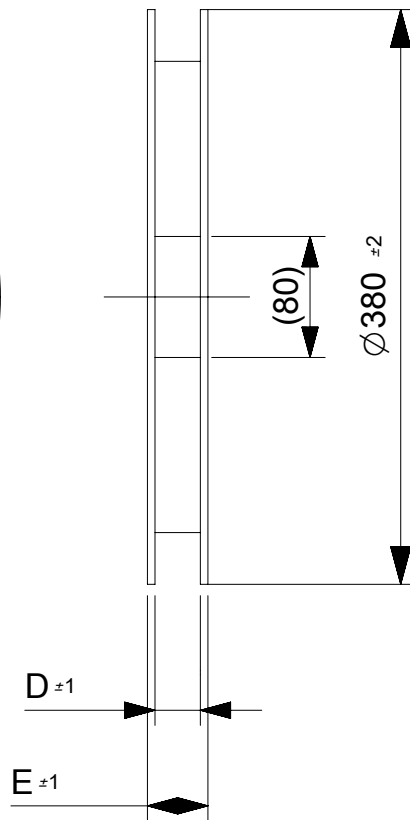
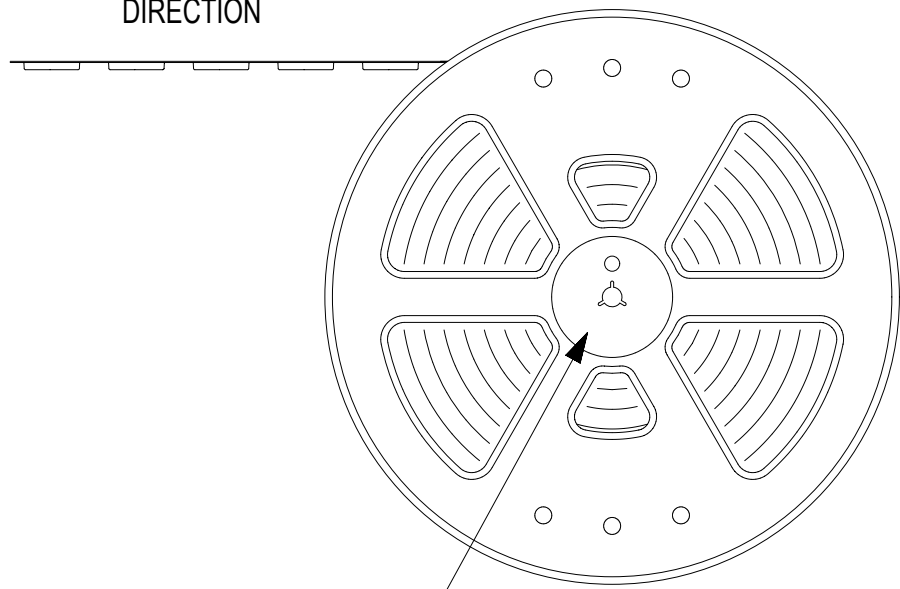
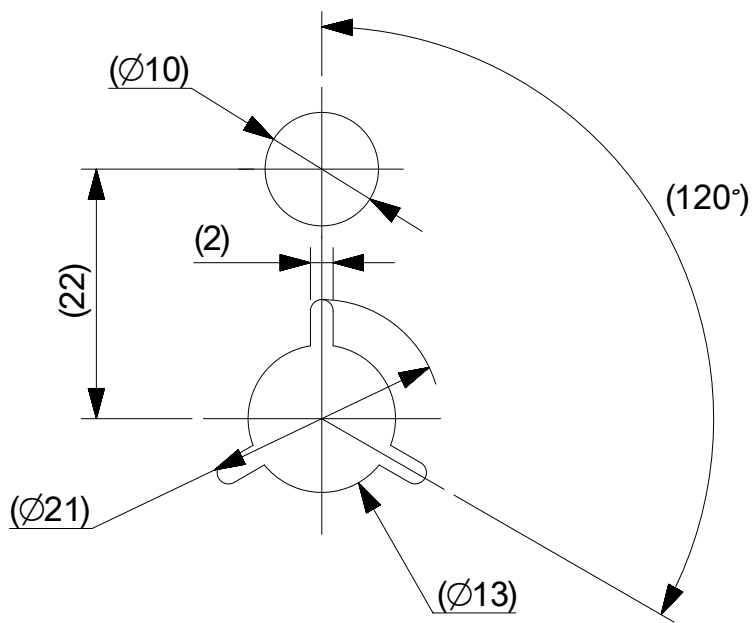


引き出し方向

PULL OUT  
DIRECTION



"E"



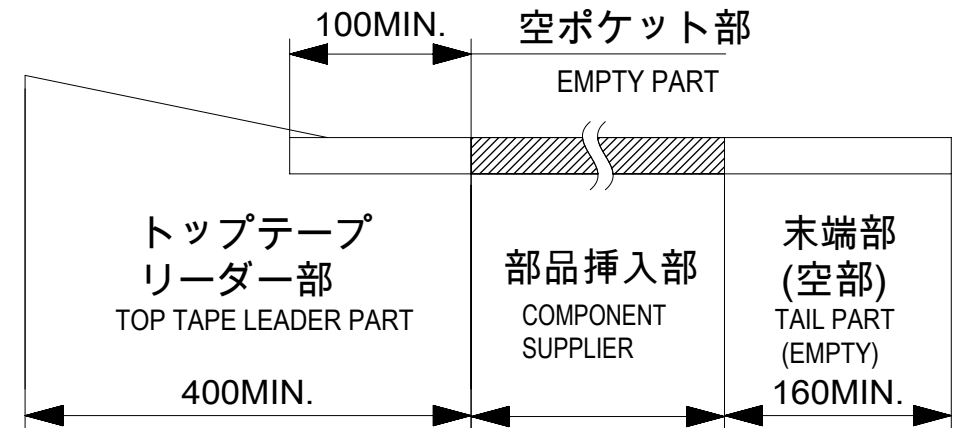
DETAIL "E"

NOTES

- 梱包数量 : 3000個 / リール  
NUMBER OF CONNECTORS : 3000 PCS/REEL.
- リードテープ長さ  
LEAD TAPE LENGTH

引き出し方向

PULL OUT  
DIRECTION

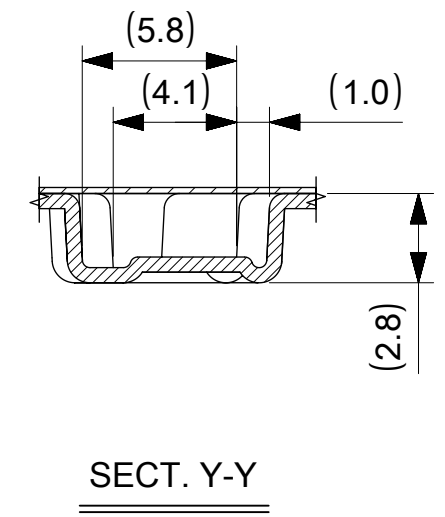
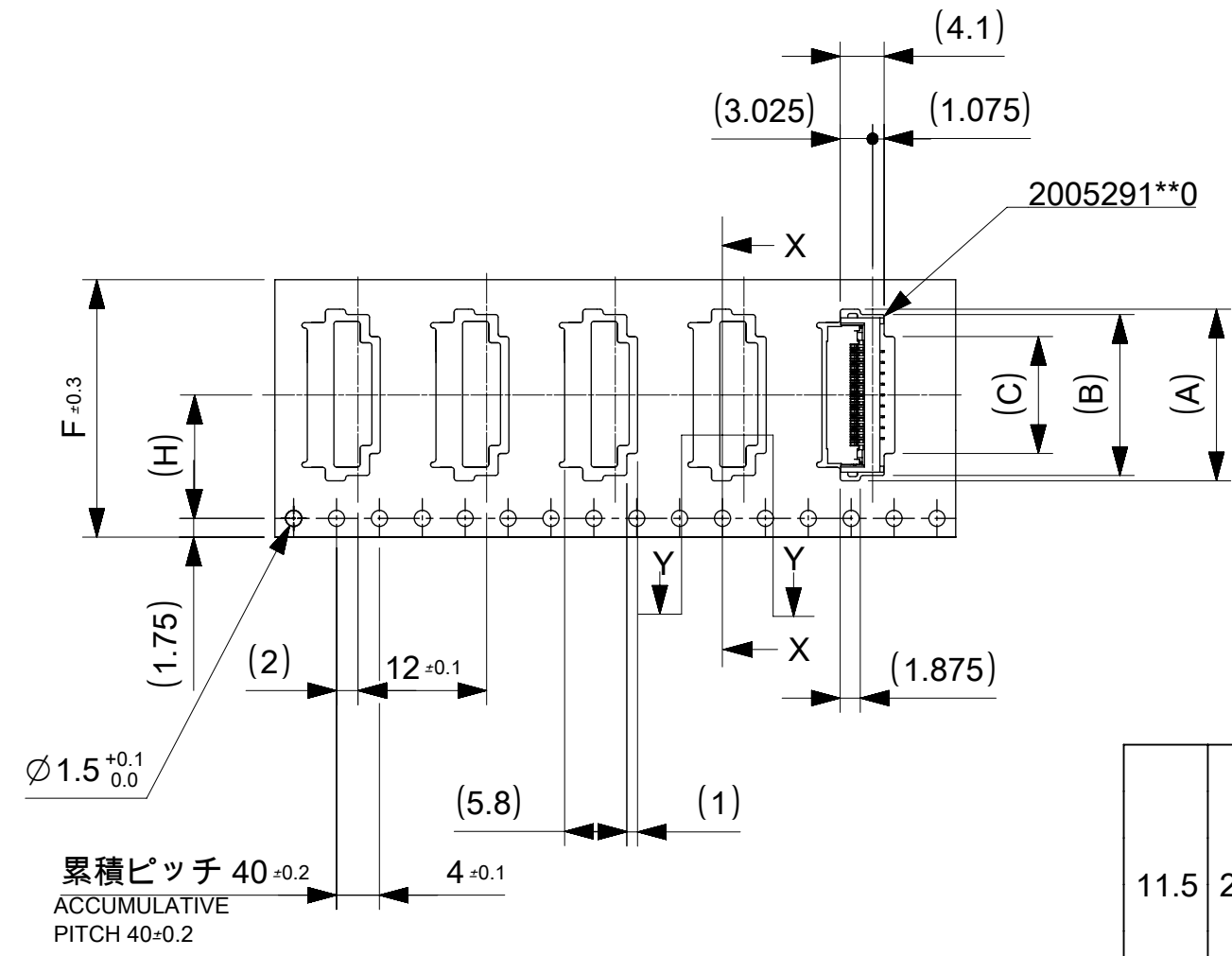
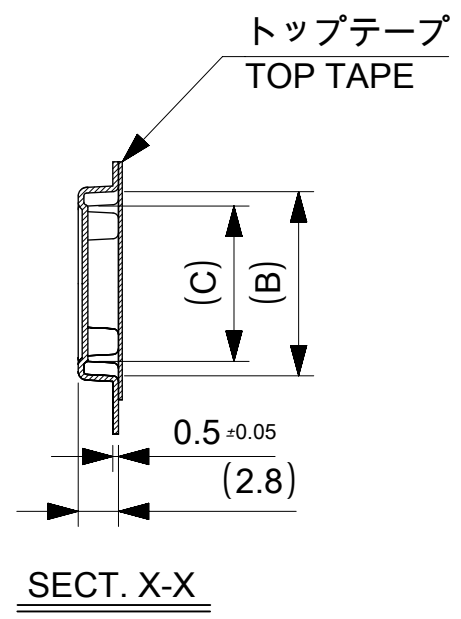


- カバーテープの剥離強度については、IEC60286-3に準拠。  
COVER TAPE PEEL FORCE IS DEFINED BY IEC 60286-3.
- 製品詳細寸法については、図面 2005291000-000を参照下さい。  
FOR DIMENTIONS OF PRODUCT, REFER TO 2005291000-000.
- 材料 MATERIAL  
キャリアテープ : ポリスチレン  
CARRIER TAPE : POLYSTYRENE  
トップテープ : ポリエチレンテレフタレート、ポリエチレン  
TOP TAPE : POLYETHYLENE TEREHTHALATE, POLYETHYLENE  
リール :ポリスチレン<リサイクル材を含む>
- ELV及びRoHS適合品 ELV AND RoHS COMPLIANT.

THIS DRAWING CONTAINS INFORMATION THAT IS PROPRIETARY TO MOLEX ELECTRONIC TECHNOLOGIES, LLC AND SHOULD NOT BE USED WITHOUT WRITTEN PERMISSION

REVISED	EC NO: 103009	2016/02/09	GENERAL TOLERANCES (UNLESS SPECIFIED)	DIMENSION UNITS	SCALE	<b>molex</b>			
	DRWN: MTAKAHASHI04	2016/02/19	ANGULAR TOL ± 1.0 °	mm	2:1				
	CHK'D: TKUSUHARA01	2016/02/19	4 PLACES ± 0.05	DRWN BY	DATE	PRODUCT CUSTOMER DRAWING			
	APPR: TKUSUHARA01	2016/02/19	3 PLACES ± 0.1	MTAKAHASHI04	2015/12/24				
		2 PLACES ± 0.2	CHK'D BY	DATE	DOCUMENT NUMBER DOC TYPE DOC PART SHEET NUMBER 2005290000 PSD 000 1 OF 2				
		1 PLACE ± 0.2	YNOGAWA	2015/12/25					DRAWING SIZE THIRD ANGLE PROJECTION A3
		0 PLACES ± 0.2	APPR BY	DATE	DRAFT WHERE APPLICABLE MUST REMAIN WITHIN DIMENSIONS				
B	REV								THIRD ANGLE PROJECTION
					THIRD ANGLE PROJECTION				

引き出し方向  
PULL OUT  
DIRECTION



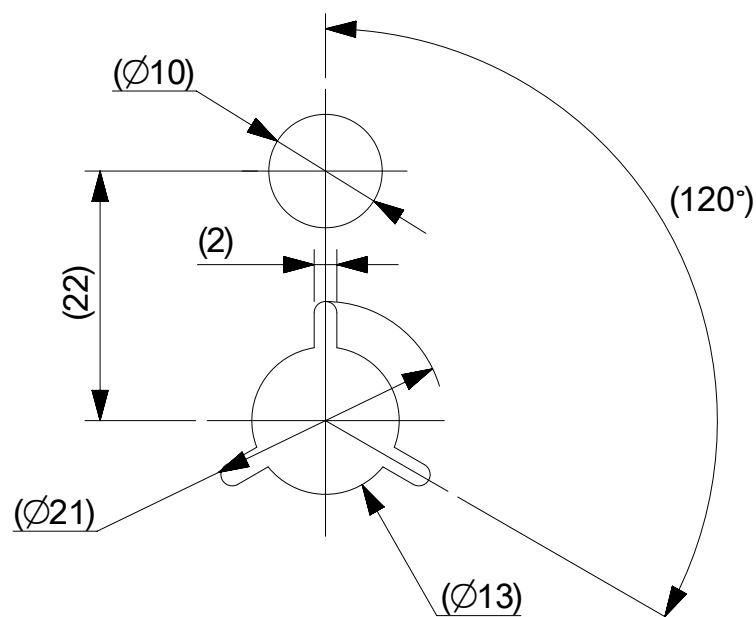
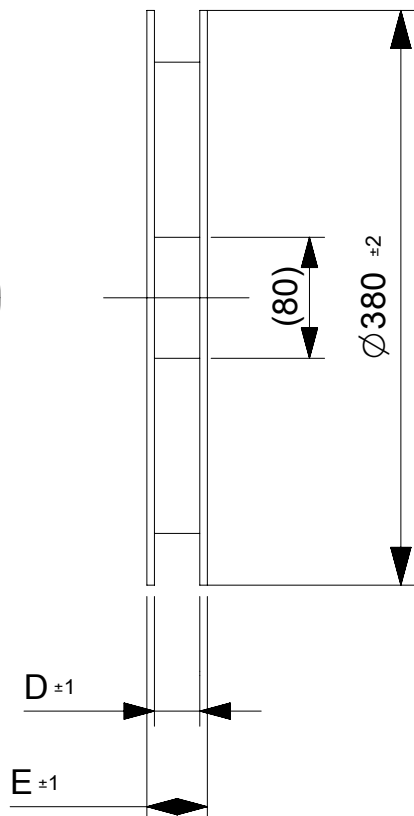
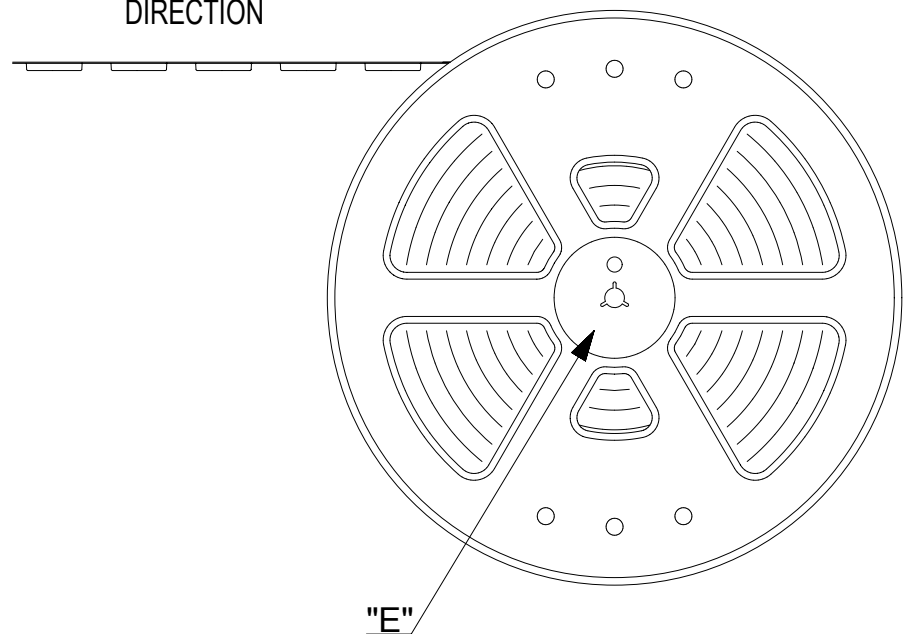
11.5	24	29.4	25.4	10.4	14.4	15.5	2005290090	9
				9.4	13.4	14.5	2005290080	8
				8.4	12.4	13.5	2005290070	7
				7.4	11.4	12.5	2005290060	6
				6.4	10.4	11.5	2005290050	5
				5.4	9.4	10.5	2005290040	4
H	F	E	D	C	B	A	EMBOSSED PACKAGE	Ckt
オーダー番号 ORDER NO.								
CONNECTER NO. 2005291**0								

THIS DRAWING CONTAINS INFORMATION THAT IS PROPRIETARY TO MOLEX ELECTRONIC TECHNOLOGIES, LLC AND SHOULD NOT BE USED WITHOUT WRITTEN PERMISSION

EC NO: 103009 DRWN: MTAKAHASHI04 CHK'D: TKUSUHARA01 APPR: TKUSUHARA01	2016/02/09	2016/02/19	2016/02/19	GENERAL TOLERANCES (UNLESS SPECIFIED)  ANGULAR TOL ± 1.0 °  4 PLACES ± 0.05 3 PLACES ± 0.1 2 PLACES ± 0.2 1 PLACE ± 0.2 0 PLACES ± 0.2  DRAFT WHERE APPLICABLE MUST REMAIN WITHIN DIMENSIONS	DIMENSION UNITS	SCALE	
	mm	1:1					
	DRWN BY	DATE	MTAKAHASHI04		2015/12/24		
	CHK'D BY	DATE	KTAKAHASHI		2015/12/25		
	APPR BY	DATE	YNOGAWA		2016/01/04		
	DRAWING SIZE	THIRD ANGLE PROJECTION	A3				
PRODUCT CUSTOMER DRAWING		SERIES	MATERIAL NUMBER	CUSTOMER			
		200529	SEE CHART	GENERAL			
DOCUMENT NUMBER		DOC TYPE	DOC PART	SHEET NUMBER			
2005290000		PSD	000	2 OF 2			

引き出し方向

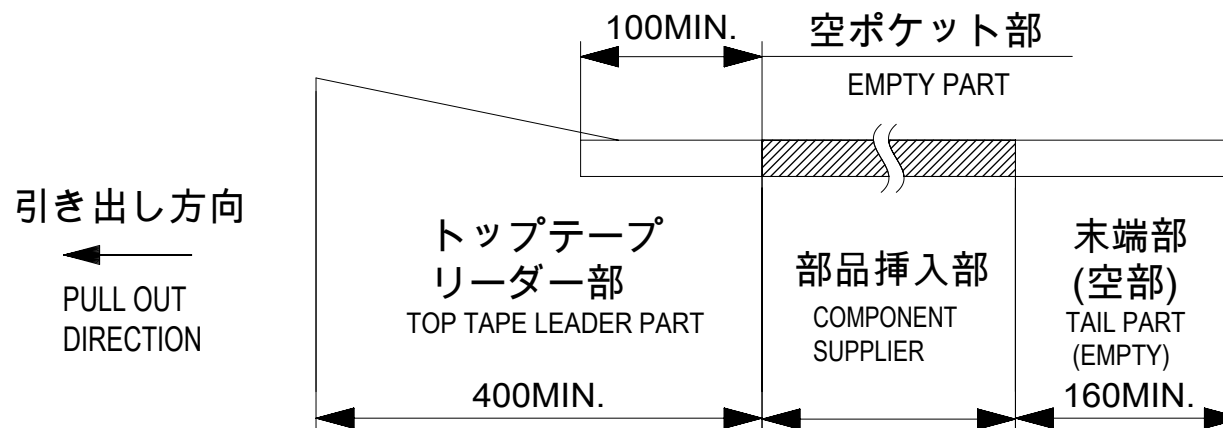
PULL OUT  
DIRECTION



DETAIL "E"

NOTES

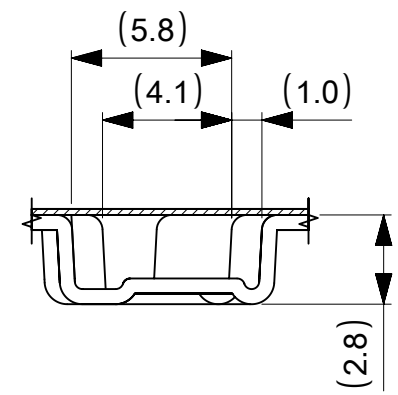
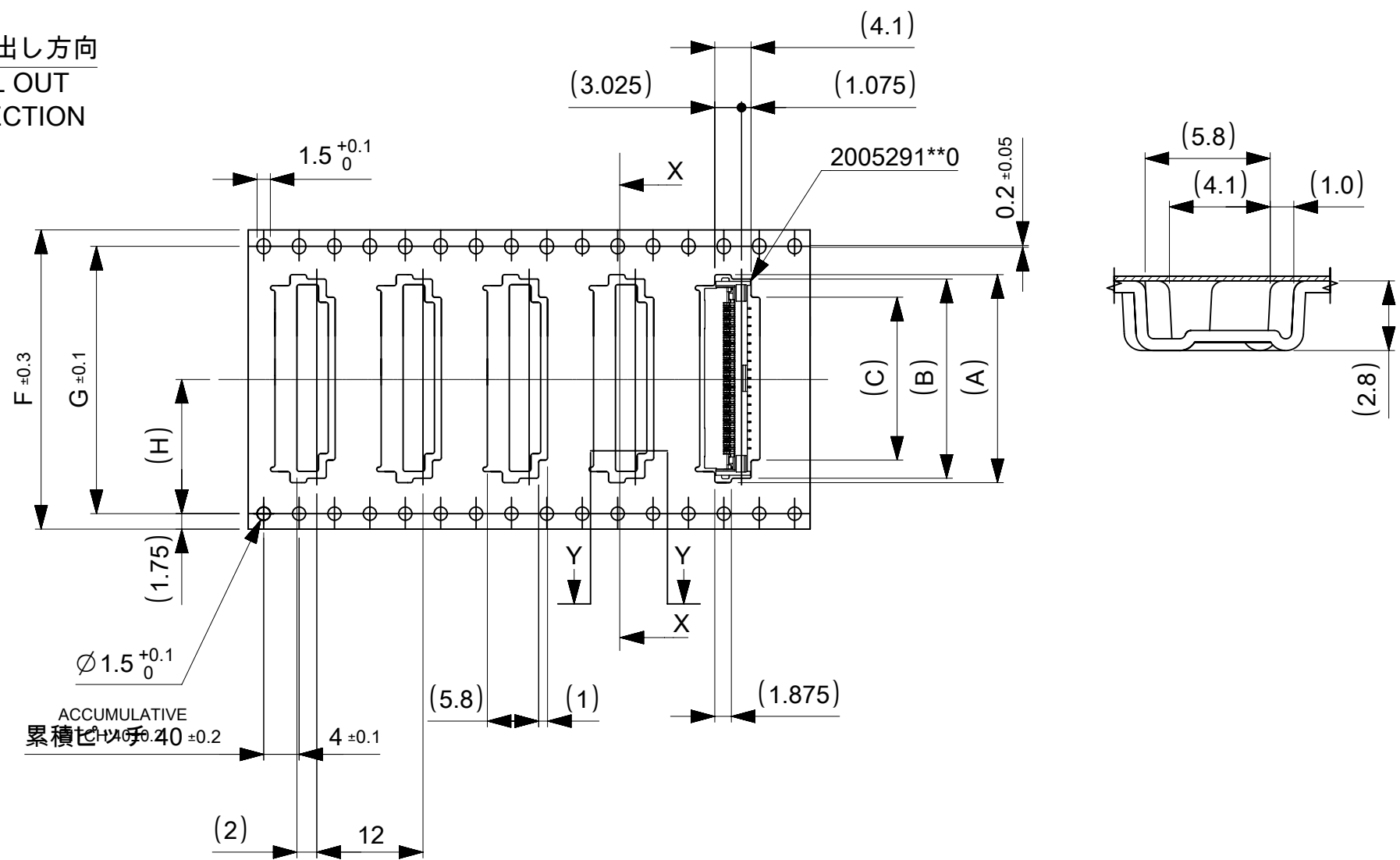
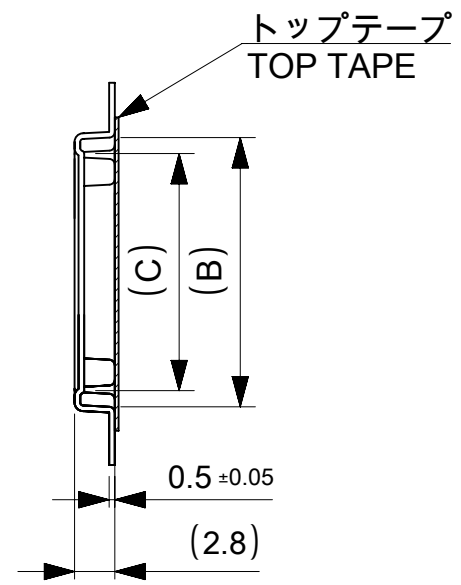
- 梱包数量 : 3000個 / リール  
NUMBER OF CONNECTORS : 3000 PCS/REEL.
- リードテープ長さ  
LEAD TAPE LENGTH



- カバーテープの剥離強度については、IEC60286-3に準拠。  
COVER TAPE PEEL FORCE IS DEFINED BY IEC 60286-3.
- 製品詳細寸法については、図面 2005291006-000を参照下さい。  
FOR DIMENSIONS OF PRODUCT, REFER TO 2005291006-000.
- 材料 MATERIAL  
キャリアテープ : ポリスチレン  
CARRIER TAPE : POLYSTYRENE  
トップテープ : ポリエチレンテレフタレート、ポリエチレン  
TOP TAPE : POLYETHYLENE TEREPHTHALATE, POLYETHYLENE  
リール : ポリスチレン<リサイクル材を含む>
- ELV及びRoHS適合品 ELV AND RoHS COMPLIANT.

THIS DRAWING CONTAINS INFORMATION THAT IS PROPRIETARY TO MOLEX ELECTRONIC TECHNOLOGIES, LLC AND SHOULD NOT BE USED WITHOUT WRITTEN PERMISSION									
DIMENSION UNITS	SCALE	CURRENT REV DESC:					<b>molex</b>		
mm	2:1								
GENERAL TOLERANCES (UNLESS SPECIFIED)							1.0 FPC ZIF BTM CONT EMBT PKG		
ANGULAR TOL	± 1.0 °						PRODUCT CUSTOMER DRAWING		
4 PLACES	± 0.05	EC NO: 698599	DRWN: KYHWANG		2022/01/28	DOCUMENT NUMBER			
3 PLACES	± 0.1	CHK'D: SHOSHIKAWA	APPR: SHOSHIKAWA		2022/03/11	2005290006			
2 PLACES	± 0.2	INITIAL REVISION:				DOC TYPE	DOC PART	REVISION	
1 PLACE	± 0.2	DRWN: MTAKAHASHI04	APPR: YNOGAWA		2015/12/24	PSD	000	C	
0 PLACES	± 0.2			2016/01/04					
DRAFT WHERE APPLICABLE MUST REMAIN WITHIN DIMENSIONS		THIRD ANGLE PROJECTION	DRAWING	SERIES	MATERIAL NUMBER	CUSTOMER		SHEET NUMBER	
			A3-SIZE	200529	SEE CHART	GENERAL		1 OF 2	

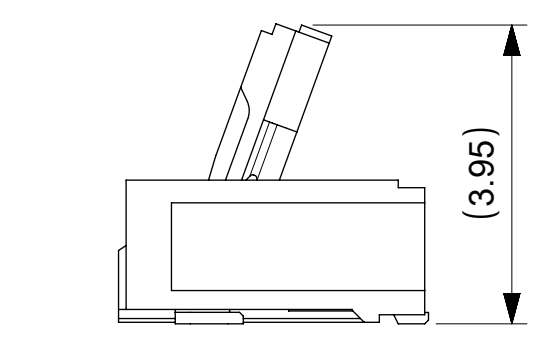
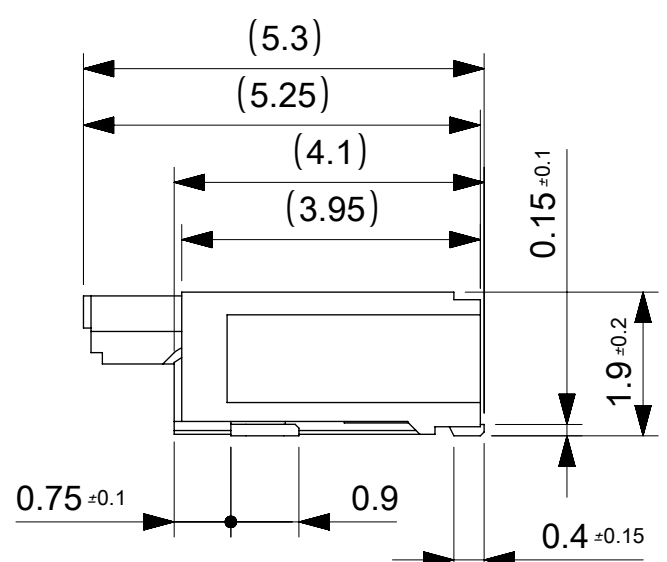
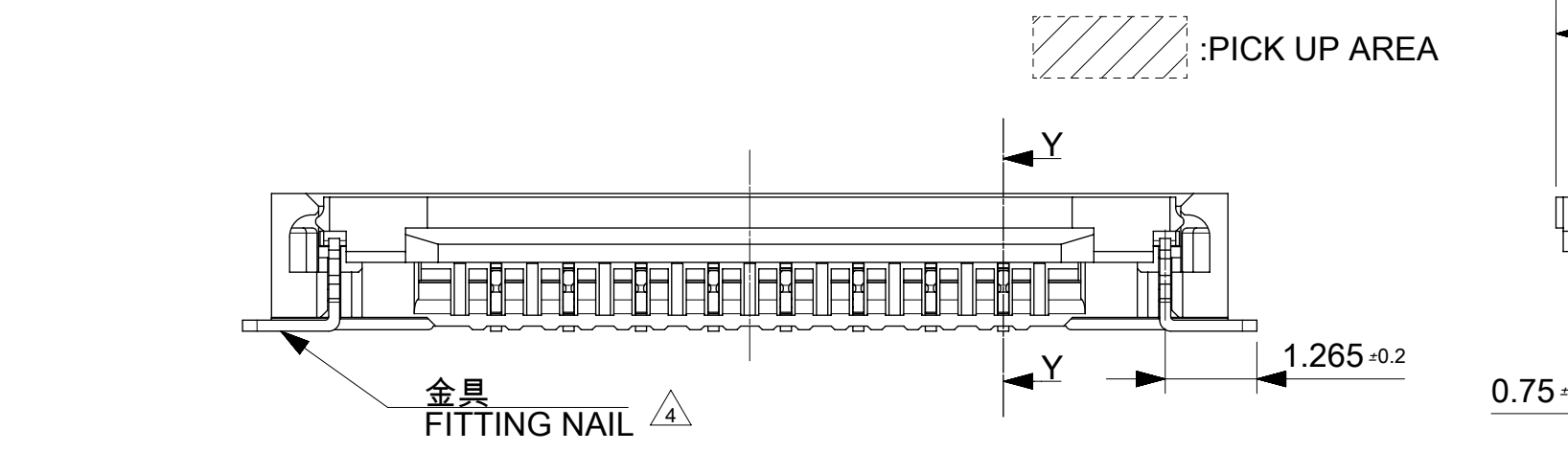
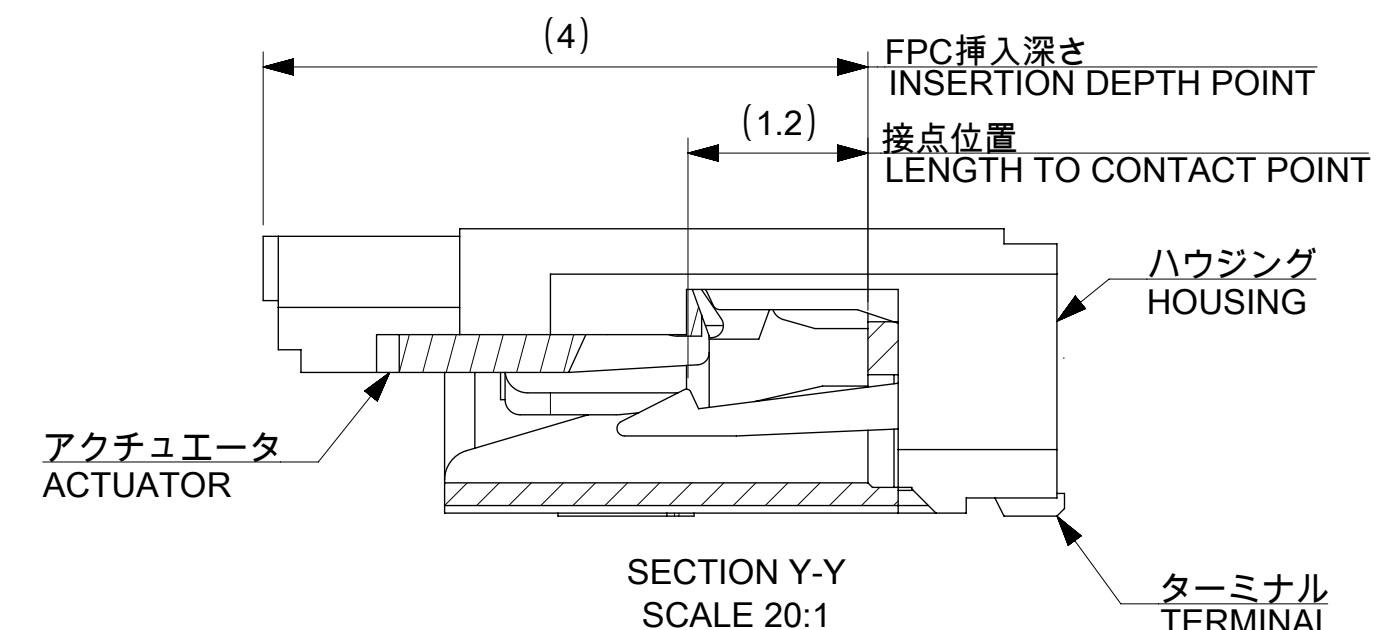
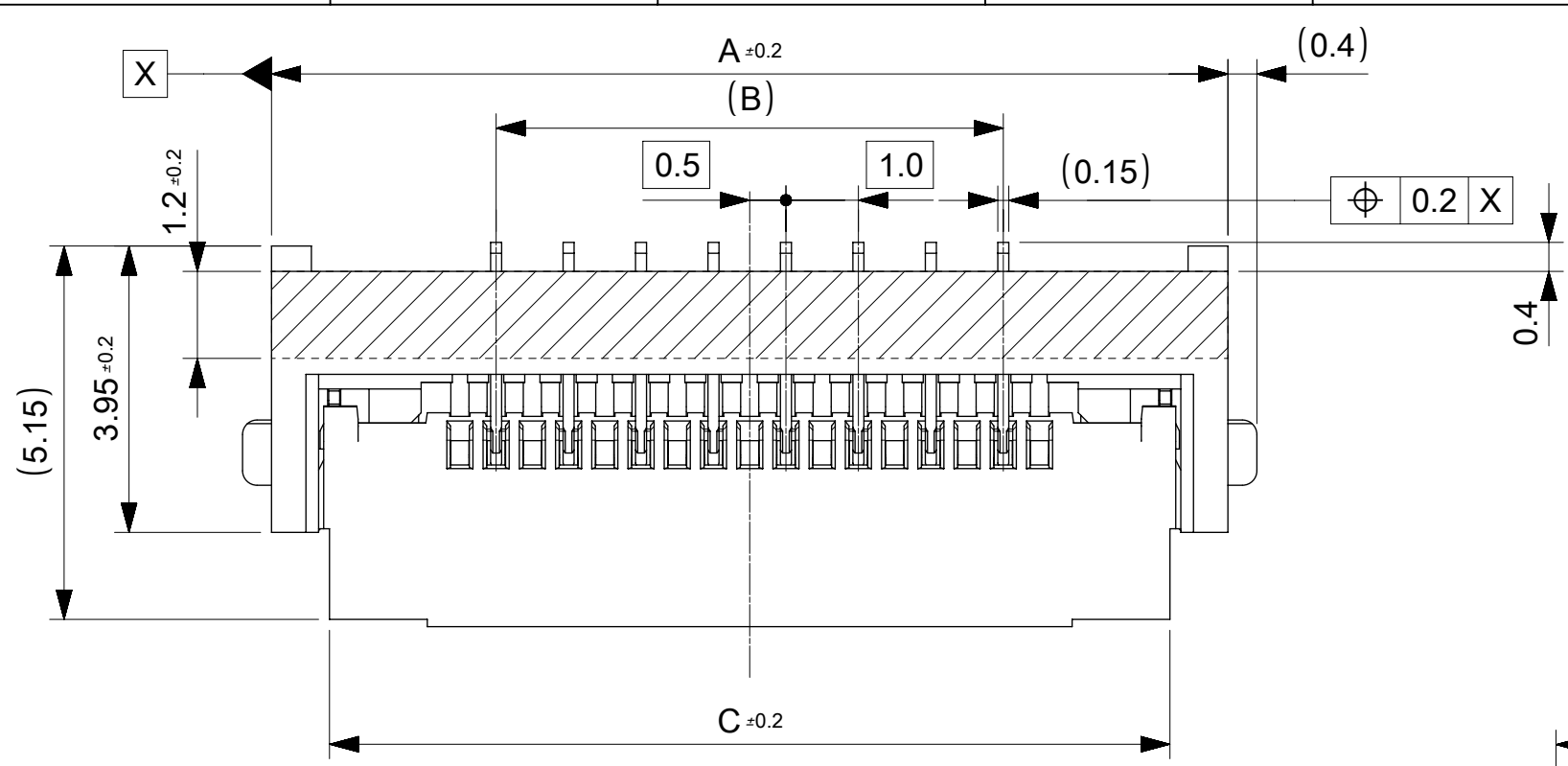
引き出し方向  
PULL OUT  
DIRECTION



20.2	40.4	44	49.4	45.4	23.4	27.4	28.5	2005290220	22
					18.4	22.4	23.5	2005290170	17
14.2	28.4	32	37.4	33.4	13.4	17.4	18.5	2005290120	12
H	G	F	E	D	C	B	A	EMBOSSED PACKGE	Ckt
								オーダー番号 ORDER NO.	

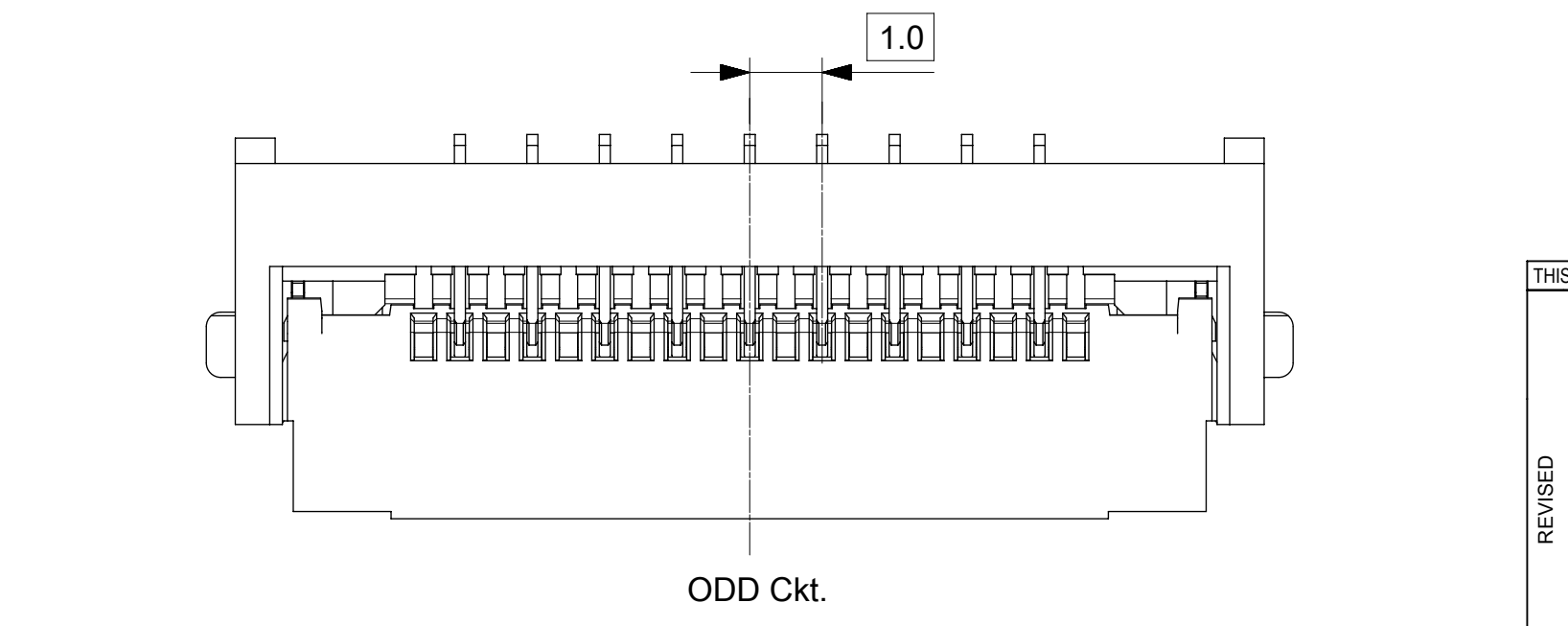
CONNECTOR SERIES NO. 2005291\*\*0

THIS DRAWING CONTAINS INFORMATION THAT IS PROPRIETARY TO MOLEX ELECTRONIC TECHNOLOGIES, LLC AND SHOULD NOT BE USED WITHOUT WRITTEN PERMISSION											
DIMENSION UNITS mm		SCALE 2:1		CURRENT REV DESC:						<b>molex</b>	
GENERAL TOLERANCES (UNLESS SPECIFIED)				EC NO: 698599 DRWN: KYHWANG 2022/01/28 CHK'D: SHOSHIKAWA 2022/03/11 APPR: SHOSHIKAWA 2022/03/11							
ANGULAR TOL ± 1.0 °				PRODUCT CUSTOMER DRAWING						DOCUMENT NUMBER	
4 PLACES ± 0.05				INITIAL REVISION:						DOC TYPE	
3 PLACES ± 0.1				DRWN: MTAKAHASHI04 2015/12/24						DOC PART	
2 PLACES ± 0.2				APPR: YNOGAWA 2016/01/04						REVISION	
1 PLACE ± 0.2				MATERIAL NUMBER						SHEET NUMBER	
0 PLACES ± 0.2				CUSTOMER						2 OF 2	
DRAFT WHERE APPLICABLE MUST REMAIN WITHIN DIMENSIONS				THIRD ANGLE PROJECTION		DRAWING		SERIES		MATERIAL NUMBER	
				A3-SIZE		200529		SEE CHART		GENERAL	



12.6	8.0	14.2	2005290090	9
11.6	7.0	13.2	2005290080	8
10.6	6.0	12.2	2005290070	7
9.6	5.0	11.2	2005290060	6
8.6	4.0	10.2	2005290050	5
7.6	3.0	9.2	2005290040	4
C	B	A	EMBOSSED PACKAGE オーダー番号 ORDER NO.	Ckt

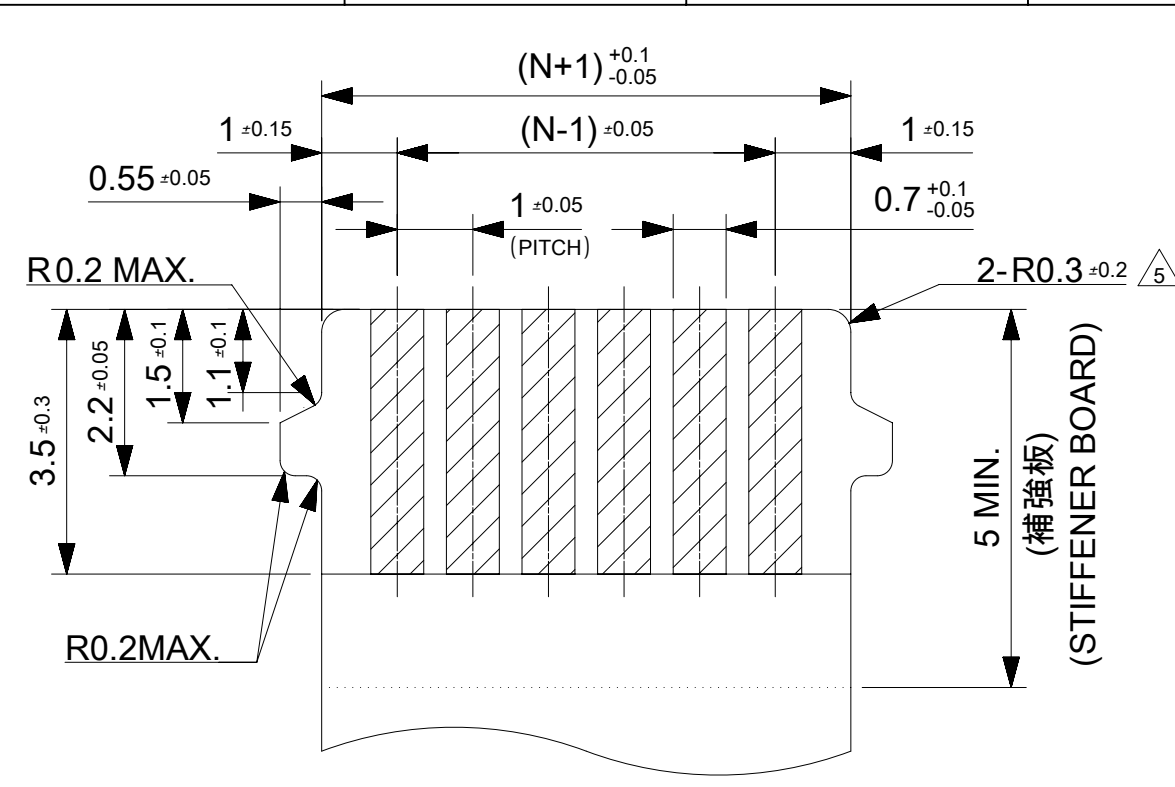
CONNECTOR SERIES NO.2005291\*\*0



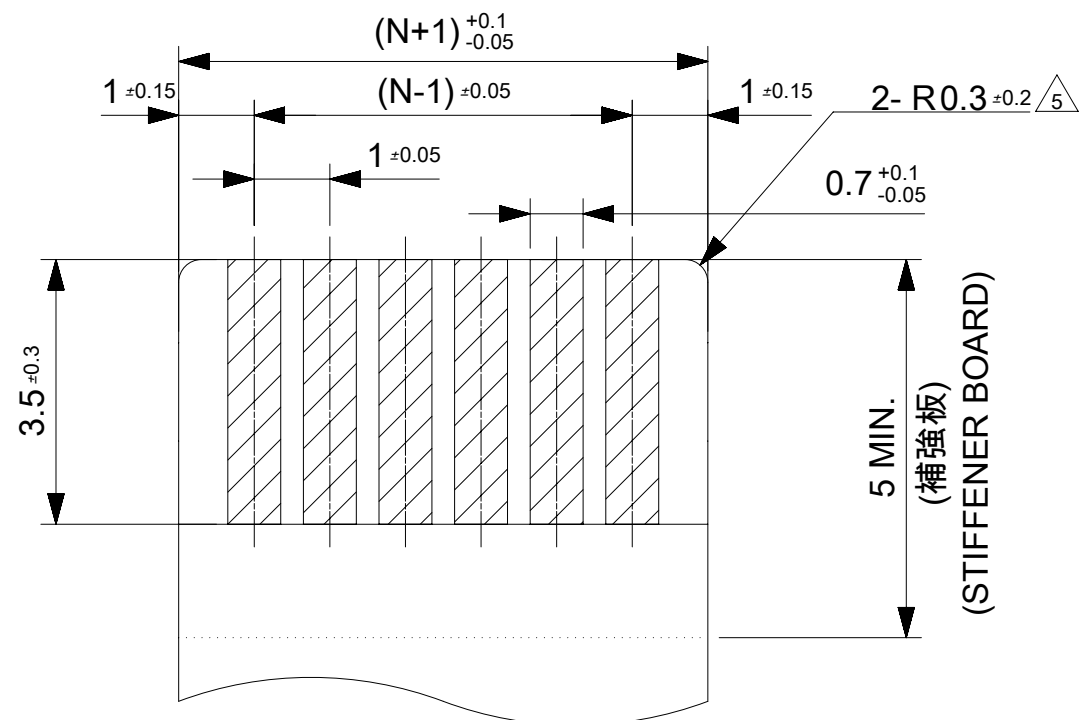
THIS DRAWING CONTAINS INFORMATION THAT IS PROPRIETARY TO MOLEX ELECTRONIC TECHNOLOGIES, LLC AND SHOULD NOT BE USED WITHOUT WRITTEN PERMISSION

REVISED	2017/06/09	2017/06/12	2017/06/12	GENERAL TOLERANCES (UNLESS SPECIFIED)	DIMENSION UNITS	SCALE															
	DRWN: JASANUMA	CHK'D: YKOBAYASHI02	APPR: TKUSUHARA01		MM	10:1															
	ANGULAR TOL ± 1.0 °				DRWN BY	DATE		MTAKAHASHI04	2015/12/24												
	4 PLACES ± 0.05	3 PLACES ± 0.1	2 PLACES ± 0.2		CHK'D BY	DATE		KTAKAHASHI	2015/12/25												
	1 PLACE ± 0.2	0 PLACES ± 0.2	DRAFT WHERE APPLICABLE MUST REMAIN WITHIN DIMENSIONS		APPR BY	DATE		YNOGAWA	2016/01/04												
EC NO: 117930	DRAWING SIZE		THIRD ANGLE PROJECTION																		
C	A3	<table border="1"> <tr> <td>SERIES</td> <td>MATERIAL NUMBER</td> <td>CUSTOMER</td> </tr> <tr> <td>200529</td> <td>SEE CHART</td> <td>GENERAL</td> </tr> <tr> <td>DOCUMENT NUMBER</td> <td>DOC TYPE</td> <td>DOC PART</td> <td>SHEET NUMBER</td> </tr> <tr> <td>2005291000</td> <td>PSD</td> <td>000</td> <td>1 OF 3</td> </tr> </table>						SERIES	MATERIAL NUMBER	CUSTOMER	200529	SEE CHART	GENERAL	DOCUMENT NUMBER	DOC TYPE	DOC PART	SHEET NUMBER	2005291000	PSD	000	1 OF 3
SERIES	MATERIAL NUMBER	CUSTOMER																			
200529	SEE CHART	GENERAL																			
DOCUMENT NUMBER	DOC TYPE	DOC PART	SHEET NUMBER																		
2005291000	PSD	000	1 OF 3																		

適合FPC/FFC推奨寸法  
APPLICABLE FPC/FFC  
RECOMMENDED DIMENSION



耳無し適合FPC/FFC推奨寸法  
APPLICABLE NON-TAB FPC/FFC  
RECOMMENDED DIMENSION



- 補強板: ポリイミド  
REINFORCE BOARD: POLYIMIDE
- 熱硬化接着剤  
THERMOSETTING ADHESIVE
- ベースフィルム: ポリイミド(25μm)  
BASE FILM: POLYIMIDE(25μm)
- 熱硬化接着剤  
THERMOSETTING ADHESIVE
- 導体部: 銅箔(35μm)  
COPPER FOIL (35μm)
- 熱硬化接着剤  
THERMOSETTING ADHESIVE
- カバーレイ: ポリイミド(25μm)  
COVER FILM: POLYIMIDE(25μm)

FPC構成推奨仕様  
STRUCTURE OF FPC

- 補強板: ポリエステル系  
REINFORCE BOARD: PET
- 接着剤(難燃ポリエステル系)  
ADHESIVE (FLAME-RETARDANT  
POLYESTER ADHESIVE)
- 絶縁テープ: ポリエステル系(25μm)  
INSULATING FILM: PET(25μm)
- 接着剤(難燃ポリエステル系)  
ADHESIVE (FLAME-RETARDANT  
POLYESTER ADHESIVE)
- 導体部: 銅箔(35μmか50μm)  
COPPER FOIL (35μm or 50μm)
- 接着剤(難燃ポリエステル系)  
ADHESIVE (FLAME-RETARDANT  
POLYESTER ADHESIVE)
- 絶縁テープ: ポリエステル系(25μm)  
INSULATING FILM: PET(25μm)

FFC構成推奨仕様  
STRUCTURE OF FFC

THIS DRAWING CONTAINS INFORMATION THAT IS PROPRIETARY TO MOLEX ELECTRONIC TECHNOLOGIES, LLC AND SHOULD NOT BE USED WITHOUT WRITTEN PERMISSION

REVISED	2017/06/09	2017/06/12	GENERAL TOLERANCES (UNLESS SPECIFIED)	DIMENSION UNITS	SCALE	
	2017/06/12	2017/06/12		MM	##	
	EC NO: 117930 DRWN: JASANUMA CHK'D: YKOBAYASHI02 APPR: TKUSUHARA01	ANGULAR TOL ± 1.0 °		DRWN BY	DATE	
		4 PLACES		± 0.05	MTAKAHASHI04	2015/12/24
		3 PLACES		± 0.1	CHK'D BY	DATE
2 PLACES		± 0.2	KTAKAHASHI	2015/12/25		
1 PLACE ± 0.2		APPR BY	DATE	PRODUCT CUSTOMER DRAWING		
0 PLACES ± 0.2		YNOGAWA	2016/01/04	SERIES	MATERIAL NUMBER	
DRAFT WHERE APPLICABLE MUST REMAIN WITHIN DIMENSIONS		DRAWING SIZE	THIRD ANGLE PROJECTION	200529	SEE SHEET 1	
C	REV			A3	CUSTOMER	
				GENERAL		
				DOCUMENT NUMBER	DOC TYPE	
				2005291000	PSD	
				DOC PART	SHEET NUMBER	
				000	2 OF 3	

**molex**

1.0 FPC ZIF BTM CONT HSG ASSY

PRODUCT CUSTOMER DRAWING

SERIES: 200529 MATERIAL NUMBER: SEE SHEET 1 CUSTOMER: GENERAL

DOCUMENT NUMBER: 2005291000 DOC TYPE: PSD DOC PART: 000 SHEET NUMBER: 2 OF 3

注記 NOTES

1.使用材料 MATERIAL

ハウジング :液晶ポリマー ガラス充填、UL94V-0(ベージュ)  
 HOUSING LIQUID CRYSTAL POLYMER GLASS FILLED, UL94V-0(BEIGE)  
 アクチュエータ :ポリアミド ガラス充填、UL94V-0(黒)  
 ACTUATOR POLYAMIDE GLASS FILLED, UL94V-0(BLACK)  
 ターミナル :リン青銅(t=0.15)  
 TERMINAL PHOSPHOR BRONZE  
 金具 :リン青銅(t=0.15)  
 FITTING NAIL PHOSPHOR BRONZE

2.めっき仕様 PLATING

ターミナル TERMINAL  
 錫銀ビスマスめっき (1.0μm以上)  
 下地:ニッケルめっき (1.0μm以上)  
 TINSILVER BISMUTH PLATING (1.0 MICROMETER MINIMUM)  
 UNDERPLATE : NICKEL OVERALL (1.0 MICROMETER MINIMUM)  
 金具 FITTING NAIL  
 錫めっき(1.0μm以上)  
 下地:ニッケルめっき (1.0μm以上)  
 TIN PLATING (1.0 MICROMETER MIN.)  
 UNDER PLATING : NICKEL PLATING (1.0 MICROMETER MIN.)

3.エンボステープ梱包時は、アクチュエータが閉じた状態とする。  
 IN THE PACKAGE, ACTUATOR OF PART SHOULD BE CLOSED.

パターン剥離止め用金具

4. FITTING NAIL FOR PREVENTION OF PEELING OF P.C.B. PATTERN.

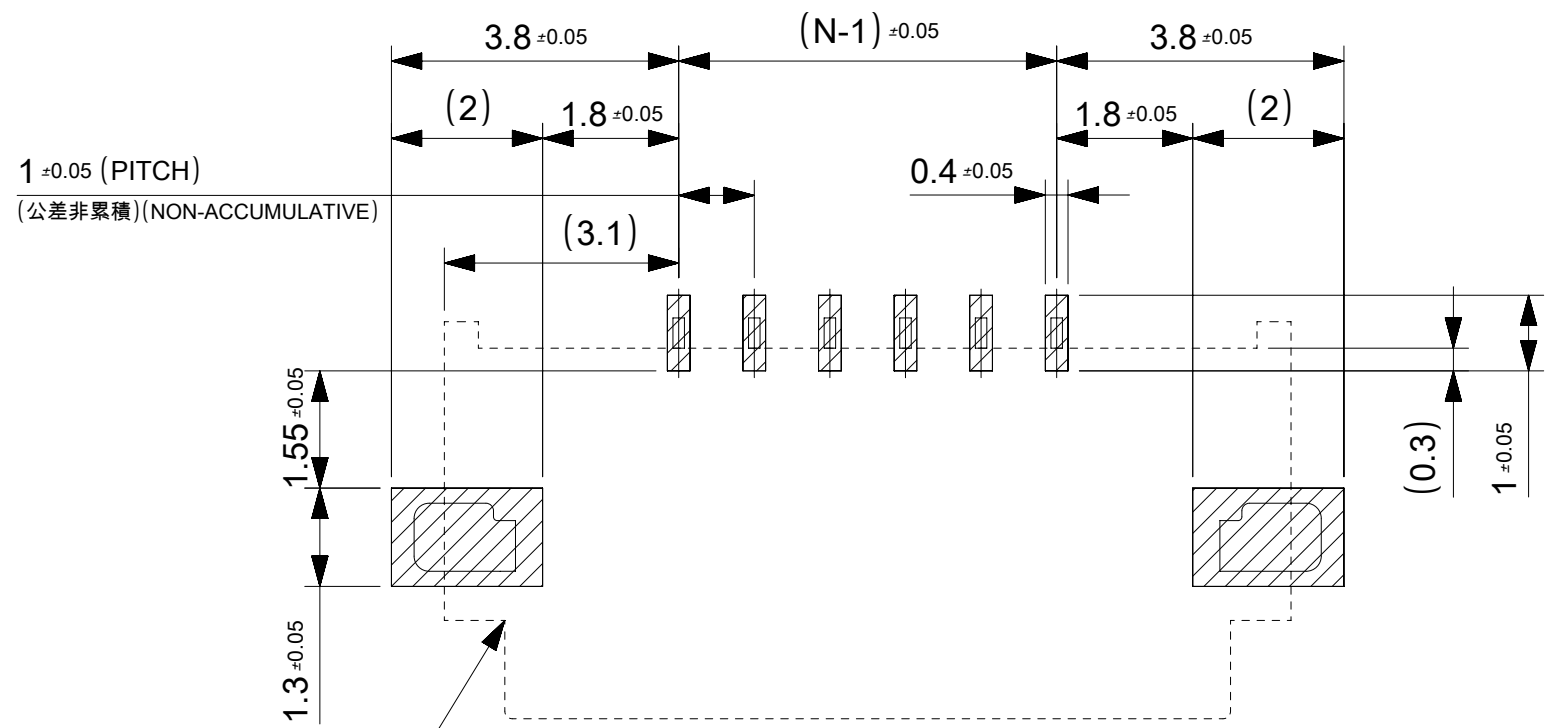
R0.3はFPC/FFC導体部にかからないこと。

5. R0.3 MUST NOT BE OVERLAPPED TO PATTERN OF FPC/FFC.

6.N:極数 N:CIRCUIT.

7.ELV及びRoHS適合品  
 ELV AND RoHS COMPLIANT

8.テールと金具を併せた平坦度は0.1以下とする。  
 TAILS AND NAILS COPLANALITY TO BE 0.1 MAX.



コネクタ位置  
 (CONNECTOR POSITION)

推奨基板レイアウト  
 RECOMENDED P.W.B.  
 PATTERN LAYOUT

参考マスク厚 : 100μm  
 参考マスク開口率 : 100%  
 REFERENCE SCREEN THICKNESS : 100μm  
 REFERENCE SCREEN OPEN RATIO : 100%

FPC/FFCについて ABOUT FPC/FFC

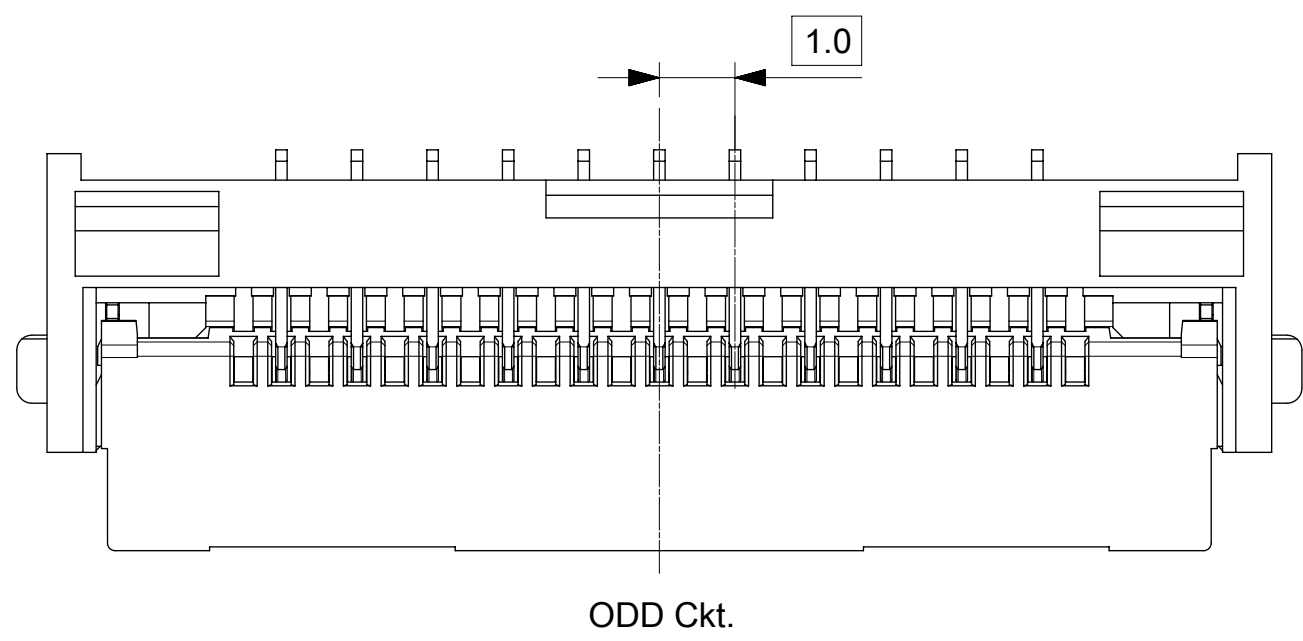
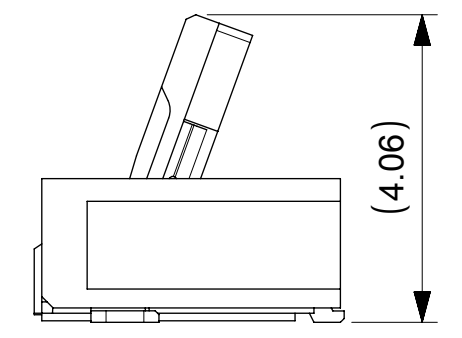
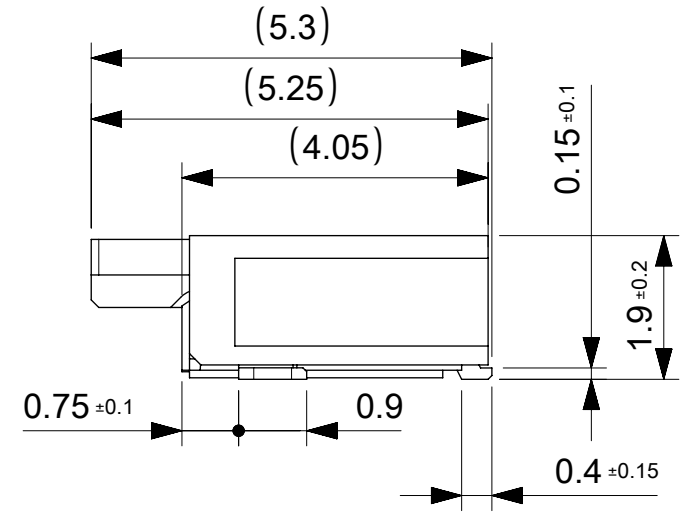
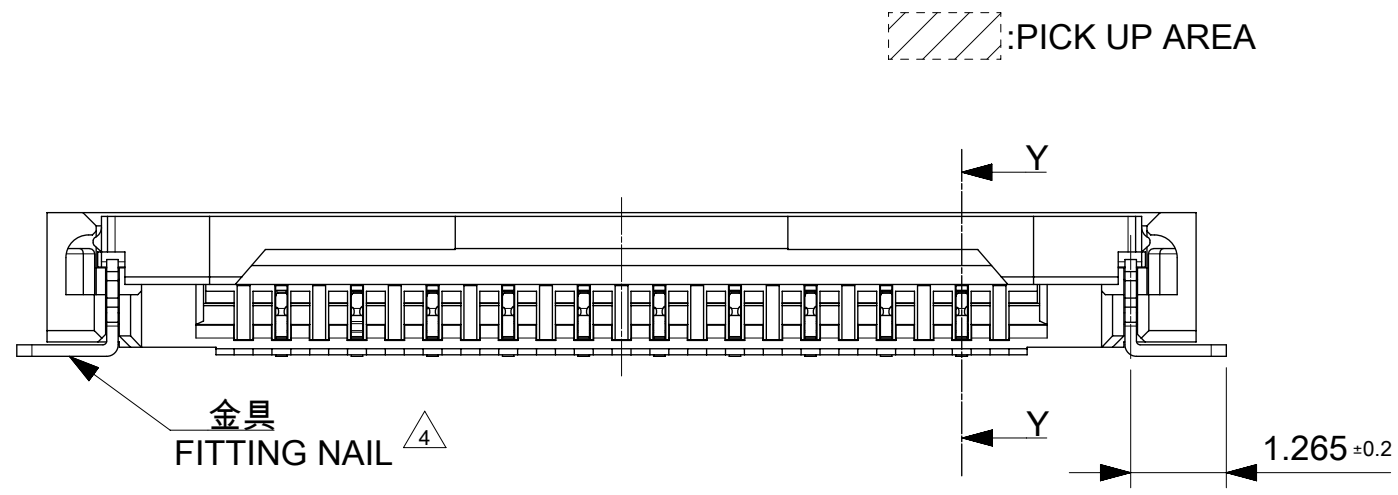
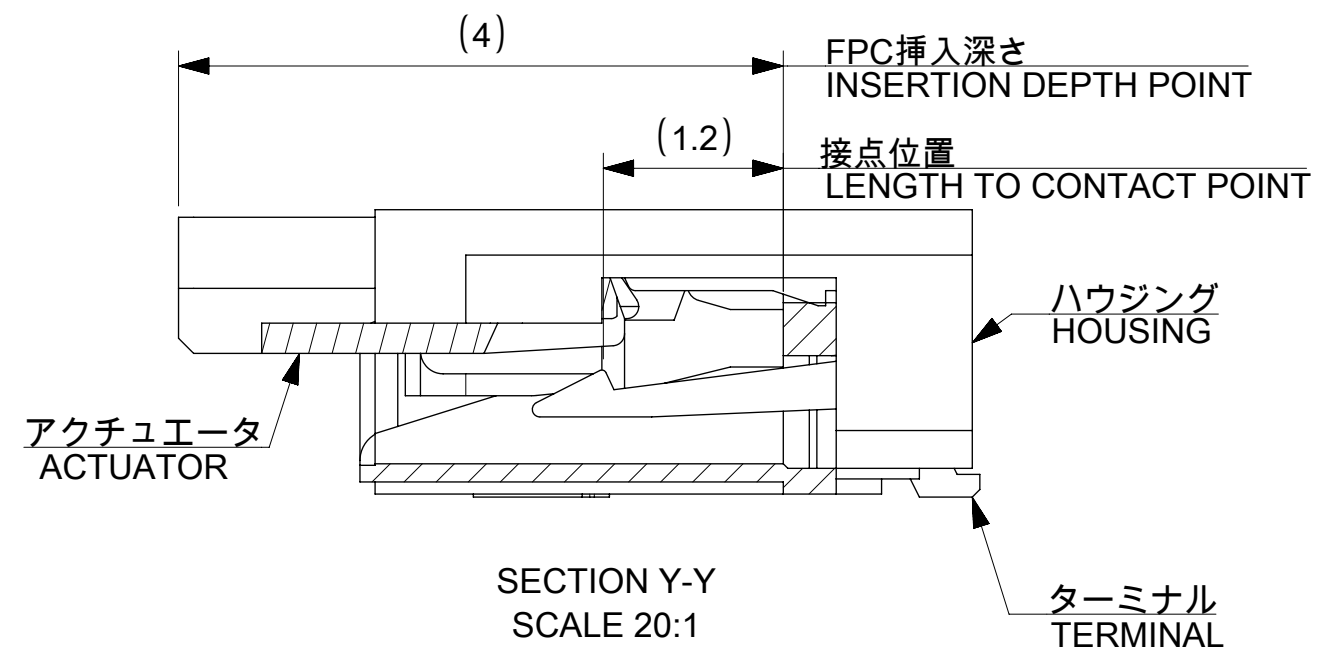
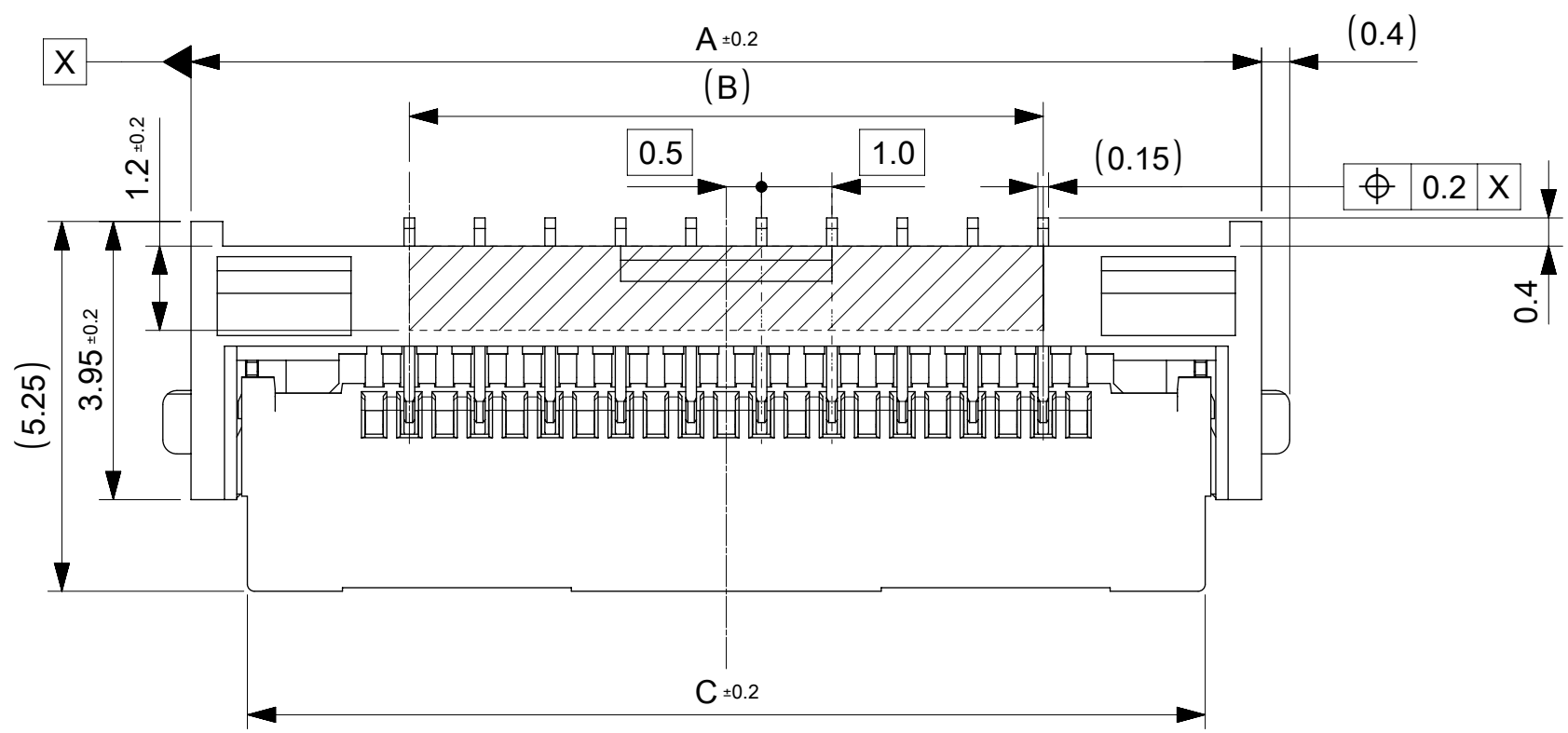
打ち抜き方向は導体側から補強板側を推奨します。  
 導体部については軟箔銅35μmまたは50μmを推奨します。  
 FFCに規定された定格温度がFFC単体前提である場合が御座います。  
 コネクタと組み合わせての実使用において、接着層が劣化するなどの信頼性を満足できないケースを回避するため、  
 実機での評価/確認をお願いいたします。  
 RECOMMENDED PUNCHING DIRECTION : FROM CONDUCTOR SIDE TO STIFFENER SIDE  
 RECOMMENDED CONDUCTOR SPEC : SOFT COPPER FOIL  
 RECOMMENDED CONDUCTOR THICKNESS : 35 MICROMETER OR 50 MICROMETER  
 WHEN ACTUALLY USING IT WITH CONNECTOR, PLEASE DO THE EVALUATION AND THE CONFIRMATION WITH AN ACTUAL EQUIPMENT TO EVADE THE CASE WHERE RELIABILITY CANNOT BE FILLED (THE ADHESIVE LINE OF FFC IS DETERIORATED ETC.)

FPCについて ABOUT FPC

補強フィルム材質はポリイミドを推奨します。ベースフィルムは25μmを推奨します。  
 接着剤は熱硬化接着剤を推奨します。  
 尚、接着剤の接点部への付着は導通不良の原因になりますので、染み出しが無い様お願い致します。  
 RECOMMENDED MATERIAL/THICKNESS.  
 RECOMMENDED STIFFENER MATERIAL: POLYIMIDE  
 RECOMMENDED BASE FILM THICKNESS: 25 MICROMETER  
 RECOMMENDED ADHESIVE: THERMOSETTING ADHESIVE  
 PLEASE PUT APPROPRIATE AMOUNT OF ADHESIVE ON ADHEREND BECAUSE THERE IS A POSSIBILITY THAT THE EXTRA ADHESIVE CAUSES THE DEFECT IN ELECTRICAL CONTINUITY.  
 THERE IS A POSSIBILITY THAT THE PRESCRIPT TEMPERATURE OF FFC IS SET TO SINGLE IT.

THIS DRAWING CONTAINS INFORMATION THAT IS PROPRIETARY TO MOLEX ELECTRONIC TECHNOLOGIES, LLC AND SHOULD NOT BE USED WITHOUT WRITTEN PERMISSION

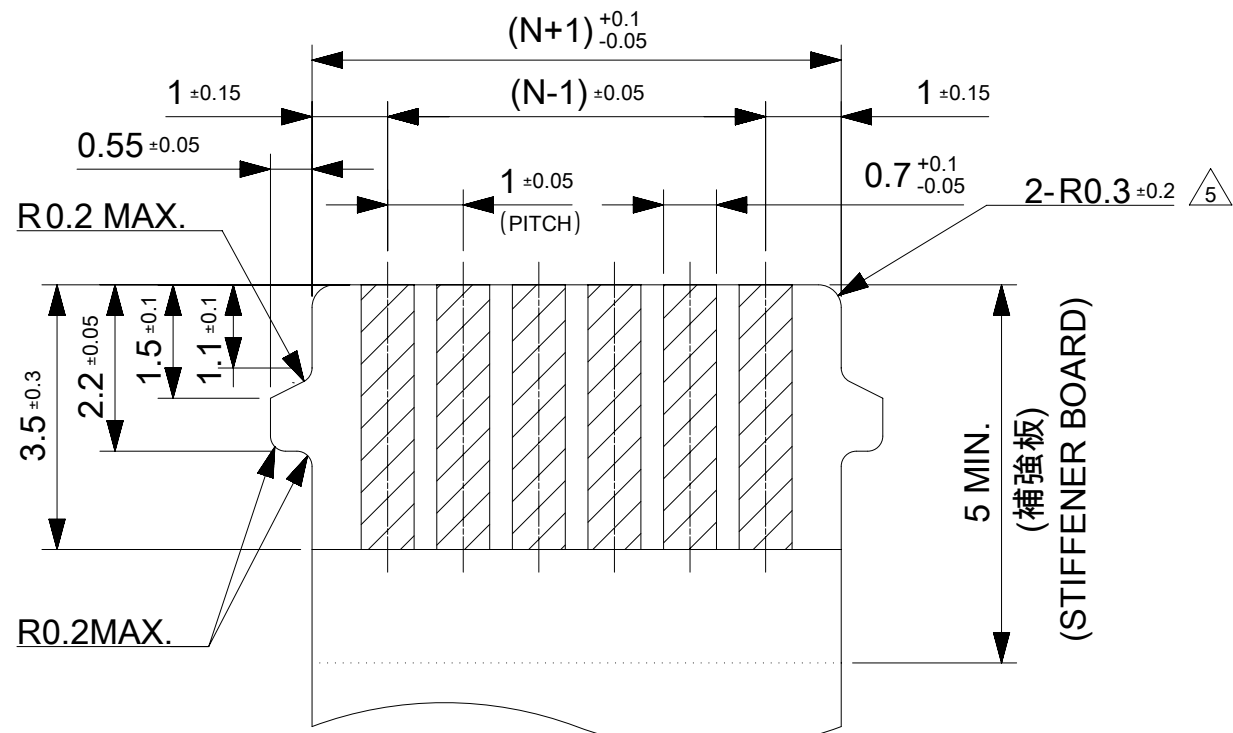
REVISED	2017/06/09	GENERAL TOLERANCES (UNLESS SPECIFIED)		DIMENSION UNITS	SCALE				
	2017/06/12	ANGULAR TOL ± 1.0 °		MM	±±				
	2017/06/12	4 PLACES	± 0.05	DRWN BY	DATE				
	2017/06/12	3 PLACES	± 0.1	MTAKAHASHI04	2015/12/24				
EC NO: 117930	JASANUMA	3 PLACES	± 0.1	CHK'D BY	DATE	1.0 FPC ZIF BTM CONT HSG ASSY  PRODUCT CUSTOMER DRAWING			
	YKOBAYASHI02	2 PLACES	± 0.2	KTAKAHASHI	2015/12/25				
	TKUSUHARA01	1 PLACE	± 0.2	APPR BY	DATE				
		0 PLACES	± 0.2	YNOGAWA	2016/01/04				
		DRAFT WHERE APPLICABLE MUST REMAIN WITHIN DIMENSIONS		DRAWING SIZE	THIRD ANGLE PROJECTION	SERIES	MATERIAL NUMBER	CUSTOMER	
				A3		200529	SEE SHEET 1	GENERAL	
						DOCUMENT NUMBER	DOC TYPE	DOC PART	SHEET NUMBER
						2005291000	PSD	000	3 OF 3



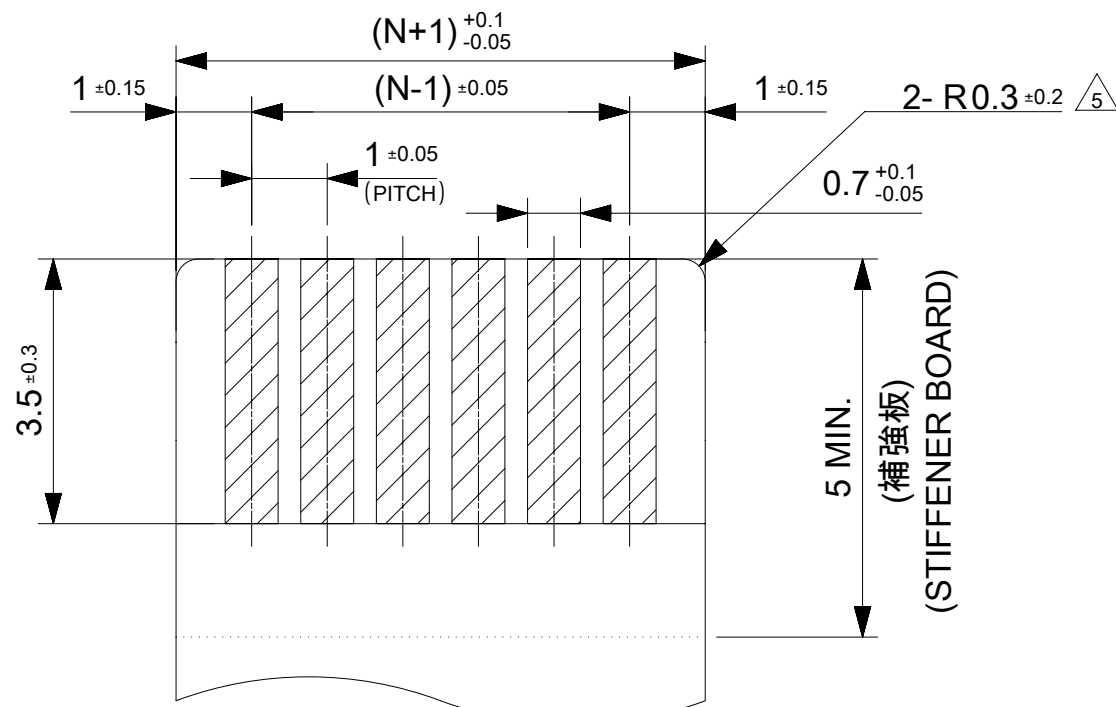
25.6	21	27.2	2005290220	22
20.6	16	22.2	2005290170	17
15.6	11	17.2	2005290120	12
C	B	A	EMBOSSED PACKAGE	Ckt
			オーダー番号 ORDER NO.	
CONNECTOR SERIES NO. 2005291**0				

THIS DRAWING CONTAINS INFORMATION THAT IS PROPRIETARY TO MOLEX ELECTRONIC TECHNOLOGIES, LLC AND SHOULD NOT BE USED WITHOUT WRITTEN PERMISSION				
DIMENSION UNITS	SCALE	CURRENT REV DESC:		
mm	10:1			
GENERAL TOLERANCES (UNLESS SPECIFIED)				
ANGULAR TOL	± 1.0 °			
4 PLACES	± 0.05	EC NO: 698599		
3 PLACES	± 0.1	DRWN: KYHWANG	2022/01/28	
2 PLACES	± 0.2	CHK'D: SHOSHIKAWA	2022/03/11	
1 PLACE	± 0.2	APPR: SHOSHIKAWA	2022/03/11	
0 PLACES	± 0.2	INITIAL REVISION:		
DRAFT WHERE APPLICABLE MUST REMAIN WITHIN DIMENSIONS		DRWN: MTAKAHASHI04	2015/12/24	
THIRD ANGLE PROJECTION		APPR: YNOGAWA	2016/01/04	
DRAWING		SERIES	MATERIAL NUMBER	CUSTOMER
A3-SIZE		200529	SEE CHART	GENERAL
SHEET NUMBER		1 OF 3		

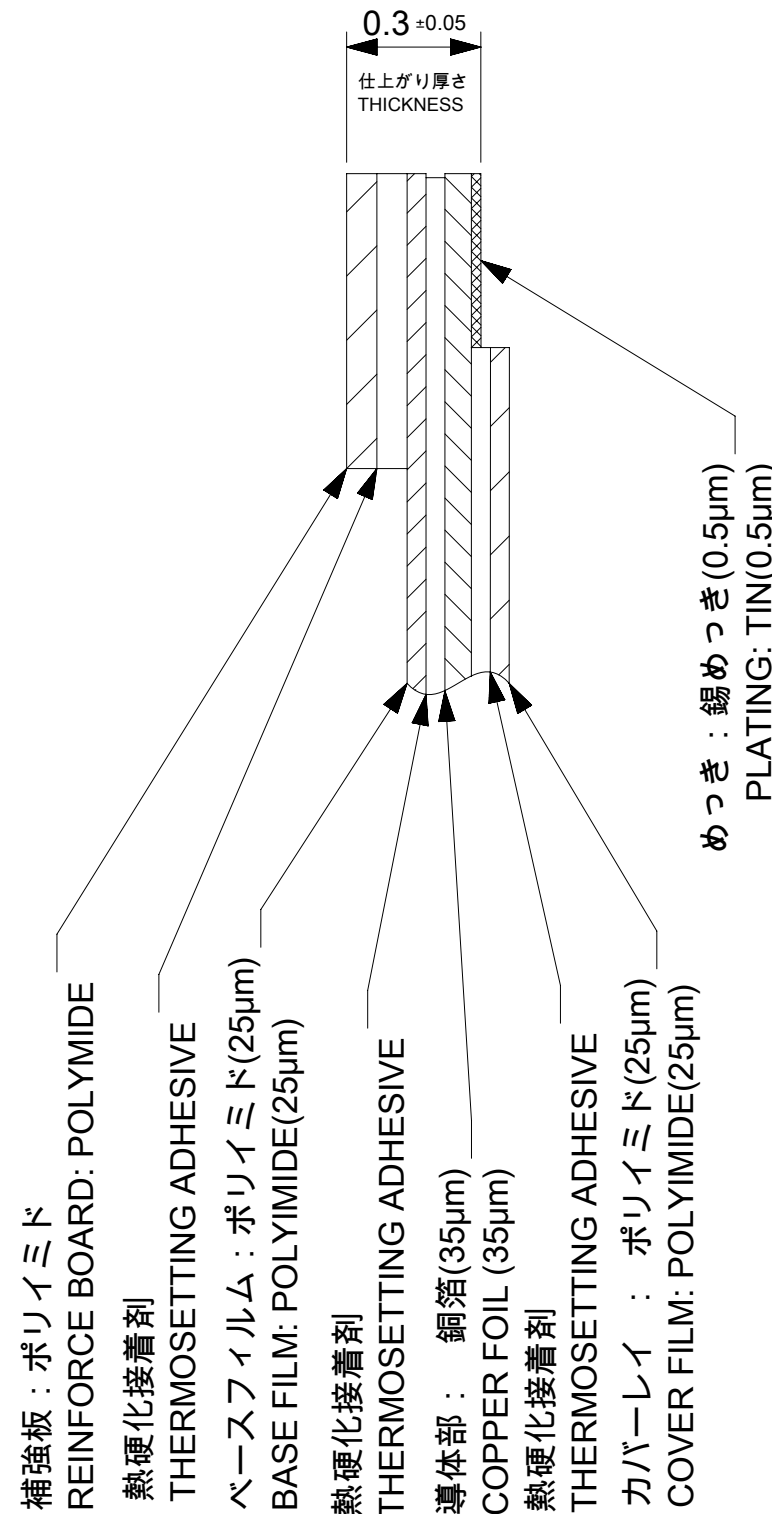




適合FPC/FFC推奨寸法  
APPLICABLE FPC/FFC  
RECOMMENDED DIMENSION

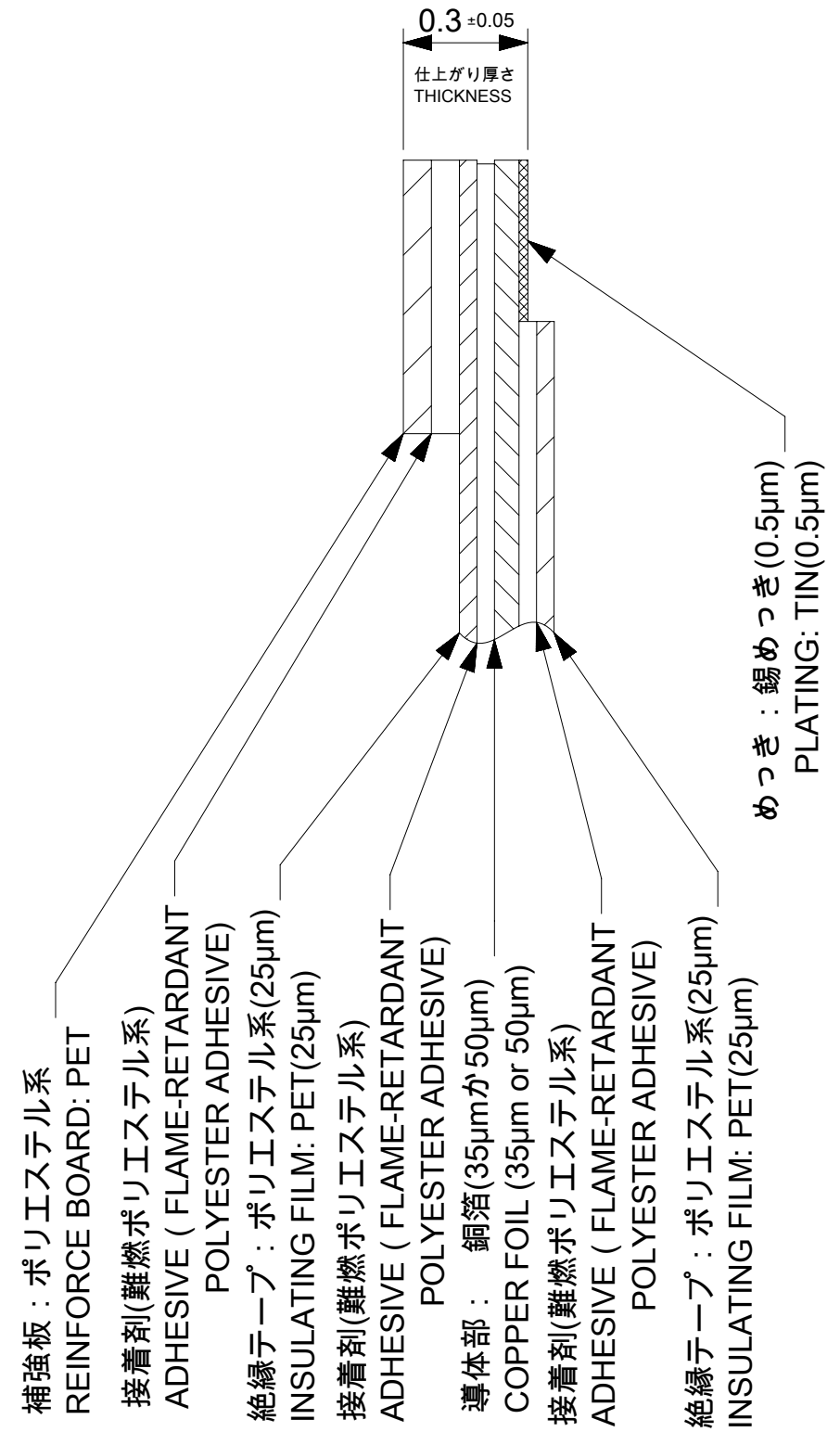


耳無し適合FPC/FFC推奨寸法  
APPLICABLE NON-TAB FPC/FFC  
RECOMMENDED DIMENSION



- 補強板: ポリイミド  
REINFORCE BOARD: POLYIMIDE
- 熱硬化接着剤  
THERMOSETTING ADHESIVE
- ベースフィルム: ポリイミド(25µm)  
BASE FILM: POLYIMIDE(25µm)
- 熱硬化接着剤  
THERMOSETTING ADHESIVE
- 導体部: 銅箔(35µm)  
COPPER FOIL (35µm)
- 熱硬化接着剤  
THERMOSETTING ADHESIVE
- カバーレイ: ポリイミド(25µm)  
COVER FILM: POLYIMIDE(25µm)

FPC構成推奨仕様  
STRUCTURE OF FPC



- 補強板: ポリエステル系  
REINFORCE BOARD: PET
- 接着剤(難燃ポリエステル系)  
ADHESIVE ( FLAME-RETARDANT  
POLYESTER ADHESIVE)
- 絶縁テープ: ポリエステル系(25µm)  
INSULATING FILM: PET(25µm)
- 接着剤(難燃ポリエステル系)  
ADHESIVE ( FLAME-RETARDANT  
POLYESTER ADHESIVE)
- 導体部: 銅箔(35µmか50µm)  
COPPER FOIL (35µm or 50µm)
- 接着剤(難燃ポリエステル系)  
ADHESIVE ( FLAME-RETARDANT  
POLYESTER ADHESIVE)
- 絶縁テープ: ポリエステル系(25µm)  
INSULATING FILM: PET(25µm)

FFC構成推奨仕様  
STRUCTURE OF FFC

THIS DRAWING CONTAINS INFORMATION THAT IS PROPRIETARY TO MOLEX ELECTRONIC TECHNOLOGIES, LLC AND SHOULD NOT BE USED WITHOUT WRITTEN PERMISSION									
DIMENSION UNITS		SCALE		CURRENT REV DESC:				<b>molex</b>	
mm		#							
GENERAL TOLERANCES (UNLESS SPECIFIED)				EC NO: 698599				1.0 FPC ZIF BTM CONT HSG ASSY	
ANGULAR TOL ± 1.0°				DRWN: KYHWANG 2022/01/28				PRODUCT CUSTOMER DRAWING	
4 PLACES ± 0.05				CHK'D: SHOSHIKAWA 2022/03/11				DOCUMENT NUMBER	
3 PLACES ± 0.1				APPR: SHOSHIKAWA 2022/03/11				DOC TYPE	
2 PLACES ± 0.2				INITIAL REVISION:				DOC PART	
1 PLACE ± 0.2				DRWN: MTAKAHASHI04 2015/12/24				REVISION	
0 PLACES ± 0.2				APPR: YNOGAWA 2016/01/04				2005291006	
DRAFT WHERE APPLICABLE MUST REMAIN WITHIN DIMENSIONS				THIRD ANGLE PROJECTION		DRAWING		SHEET NUMBER	
				A3-SIZE		SERIES		2 OF 3	
				200529		MATERIAL NUMBER		CUSTOMER	
				SEE SHEET 1		GENERAL			

注記 NOTES

1.使用材料 MATERIAL

ハウジング :液晶ポリマー ガラス充填、UL94V-0(ベージュ)  
 HOUSING LIQUID CRYSTAL POLYMER GLASS FILLED, UL94V-0(BEIGE)  
 アクチュエータ :ポリアミド ガラス充填、UL94V-0(黒)  
 ACTUATOR POLYAMIDE GLASS FILLED, UL94V-0(BLACK)  
 ターミナル :リン青銅(t=0.15)  
 TERMINAL PHOSPHOR BRONZE  
 金具 :リン青銅(t=0.15)  
 FITTING NAIL PHOSPHOR BRONZE

2.めっき仕様 PLATING

ターミナル TERMINAL  
 錫銀ビスマスめっき (1.0μm以上)  
 下地:ニッケルめっき (1.0μm以上)  
 TINSILVER BISMUTH PLATING (1.0 MICROMETER MINIMUM)  
 UNDERPLATE : NICKEL OVERALL (1.0 MICROMETER MINIMUM)  
 金具 FITTING NAIL  
 錫めっき(1.0μm以上)  
 下地:ニッケルめっき (1.0μm以上)  
 TIN PLATING (1.0 MICROMETER MIN.)  
 UNDER PLATING : NICKEL PLATING (1.0 MICROMETER MIN.)

3.エンボステーブ梱包時は、アクチュエータが閉じた状態とする。  
 IN THE PACKAGE, ACTUATOR OF PART SHOULD BE CLOSED.

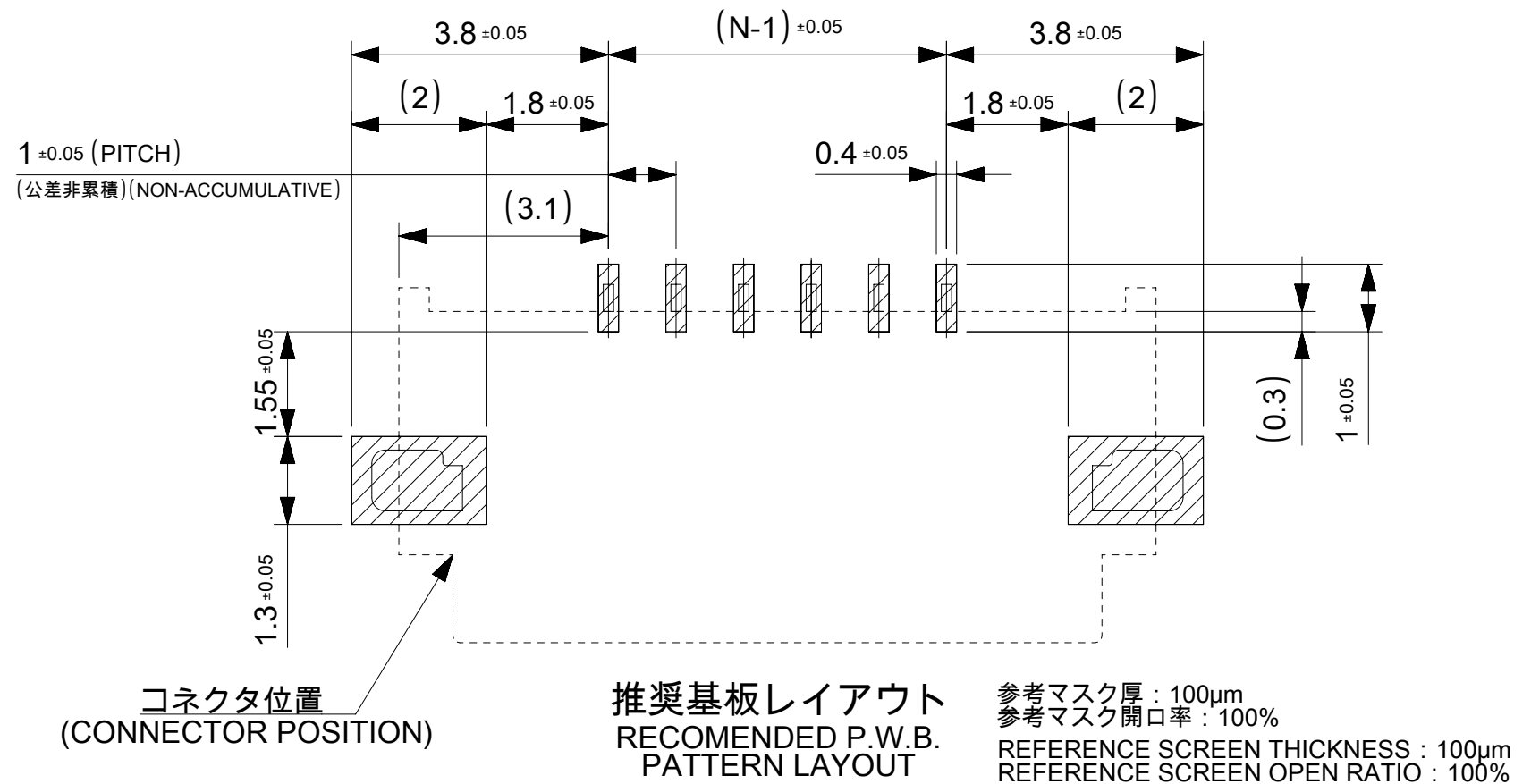
4. パターン剥離止め用金具  
 FITTING NAIL FOR PREVENTION OF PEELING OF P.C.B. PATTERN.

5. R0.3はFPC/FFC導体部にかからないこと。  
 R0.3 MUST NOT BE OVERLAPPED TO PATTERN OF FPC/FFC.

6.N:極数 N:CIRCUIT.

7.ELV及びRoHS適合品  
 ELV AND RoHS COMPLIANT

8.テールと金具を併せた平坦度は0.1以下とする。  
 TAILS AND NAILS COPLANALITY TO BE 0.1 MAX.



FPC/FFCについて ABOUT FPC/FFC

打ち抜き方向は導体側から補強板側を推奨します。  
 導体部については軟箔銅35μmまたは50μmを推奨します。  
 FFCに規定された定格温度がFFC単体前提である場合が御座います。  
 コネクタと組み合わせての実使用において、接着層が劣化するなどの信頼性を満足できないケースを回避するため、  
 実機での評価/確認をお願いいたします。  
 RECOMMENDED PUNCHING DIRECTION : FROM CONDUCTOR SIDE TO STIFFENER SIDE  
 RECOMMENDED CONDUCTOR SPEC : SOFT COPPER FOIL  
 RECOMMENDED CONDUCTOR THICKNESS : 35 MICROMETER OR 50 MICROMETER  
 WHEN ACTUALLY USING IT WITH CONNECTOR, PLEASE DO THE EVALUATION AND THE CONFIRMATION WITH AN ACTUAL EQUIPMENT TO EVADE THE CASE WHERE RELIABILITY CANNOT BE FILLED (THE ADHESIVE LINE OF FFC IS DETERIORATED ETC.)

FPCについて ABOUT FPC

補強フィルム材質はポリイミドを推奨します。ベースフィルムは25μmを推奨します。  
 接着剤は熱硬化接着剤を推奨します。  
 尚、接着剤の接点部への付着は導通不良の原因になりますので、染み出しが無い様お願い致します。  
 RECOMMENDED MATERIAL/THICKNESS.  
 RECOMMENDED STIFFENER MATERIAL: POLYIMIDE  
 RECOMMENDED BASE FILM THICKNESS: 25 MICROMETER  
 RECOMMENDED ADHESIVE: THERMOSETTING ADHESIVE  
 PLEASE PUT APPROPRIATE AMOUNT OF ADHESIVE ON ADHEREND BECAUSE THERE IS A POSSIBILITY THAT THE EXTRA ADHESIVE CAUSES THE DEFECT IN ELECTRICAL CONTINUITY.  
 THERE IS A POSSIBILITY THAT THE PRESCRIPT TEMPERATURE OF FFC IS SET TO SINGLE IT.

THIS DRAWING CONTAINS INFORMATION THAT IS PROPRIETARY TO MOLEX ELECTRONIC TECHNOLOGIES, LLC AND SHOULD NOT BE USED WITHOUT WRITTEN PERMISSION									
DIMENSION UNITS		SCALE		CURRENT REV DESC:				<b>molex</b>	
mm		±±							
GENERAL TOLERANCES (UNLESS SPECIFIED)				EC NO: 698599				1.0 FPC ZIF BTM CONT HSG ASSY	
ANGULAR TOL ± 1.0 °				DRWN: KYHWANG 2022/01/28				PRODUCT CUSTOMER DRAWING	
4 PLACES ± 0.05				CHK'D: SHOSHIKAWA 2022/03/11					
3 PLACES ± 0.1				APPR: SHOSHIKAWA 2022/03/11				DOCUMENT NUMBER	
2 PLACES ± 0.2				INITIAL REVISION:					
1 PLACE ± 0.2				DRWN: MTAKAHASHI04 2015/12/24				2005291006	
0 PLACES ± 0.2				APPR: YNOGAWA 2016/01/04				PSD 000 E	
DRAFT WHERE APPLICABLE MUST REMAIN WITHIN DIMENSIONS		THIRD ANGLE PROJECTION		DRAWING		SERIES		SHEET NUMBER	
		A3-SIZE		200529		SEE SHEET 1		3 OF 3	