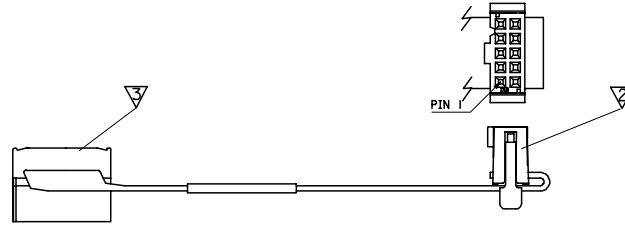
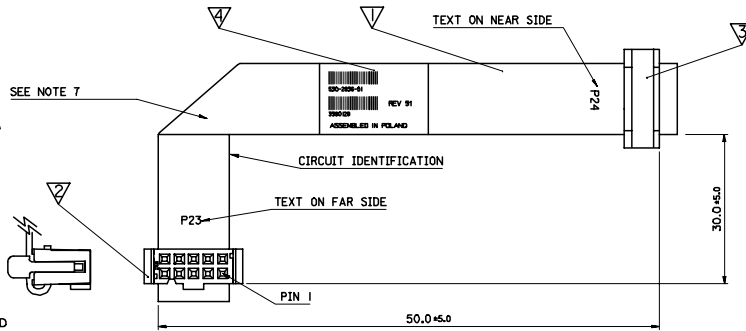


ITEM	COMPONENT	SUPPLIER	DESCRIPTION	QUANTITY	NOTE
▽	99026-002S	MOLEX	10CKT RIBBON CABLE 28 AWG 1.27mm PITCH	1	2, 3, 4
▽	90635-1101	MOLEX	L27mm 0F-50 RECEPTACLE	2	1, 3
▽	90170-0010	MOLEX	STRAIN RELIEF FOR 10CKT CONNECTOR	2	3
▽	90848-0248	MOLEX	WRAP AROUND LABEL	1	5



**NOTES:**

- SEE PRODUCT SPECIFICATION PS-99020-0015.
- SEE CABLE SPECIFICATION ES-99027-0006.
- ALL HARNESSES TO BE 100% ELECTRICALLY TESTED.
- REFERENCE DESIGNATION (I.E. "P23", "P24") PRINTED ON CABLE IN APPROX. AREA SHOWN
- LABEL TO BE PRINTED WITH THE FOLLOWING INFORMATION.  
THE TOP LINE WILL COMPRISE THE HARNESS NUMBER IN BARCODE FORM.  
THE SECOND LINE WILL BE COMPRISED OF THE HARNESS NUMBER IN HUMAN READABLE FORM, (530-2836-01)  
THE THIRD LINE WILL BE COMPRISED OF THE VENDOR CODE, DATE CODE, IN BARCODE FORM.  
REV 51 TO BE PRINTED BESIDE BARCODE.  
THE FOURTH LINE WILL BE COMPRISED VENDOR CODE, DATE CODE, IN HUMAN READABLE FORM.  
VENDOR CODE/YR/WK (33901291).  
THE FIFTH LINE WILL COMPRISE OF COUNTRY OF ORIGIN, ASSEMBLED IN POLAND
- HARNESSES TO PACKED LOOSELY IN BAGS.  
UL LABEL TO BE ATTACHED TO ALL SHIPMENTS.
- LOCTITE GLUE TO BE APPLIED TO ALL FOLDS.
- ALL MATERIALS USED IN THE CONSTRUCTION OF THIS COMPONENT/ASSEMBLY (INCLUDING RAW STOCK, COATINGS, HARDWARE, GASKETING, ETC.) SHALL COMPLY WITH THE LATEST REVISION OF SUN RHDS-COMPLIANT SPECIFICATION 914-1742-XX



<b>ADDED NOTE 8</b> EC NO: E2006-0051 DRAWN BY: KRZYSZTOF CHECKED BY: MARIUSZ APPROVED BY: MICHAŁ DATE: 2000/05/17 DATE: 2000/05/17 DATE: 2000/05/17	<b>QUALITY SYMBOLS</b> ▽=0 ▽=0	<b>GENERAL TOLERANCES (UNLESS SPECIFIED)</b> <table border="1"> <tr> <td></td> <td>mm</td> <td>INCH</td> </tr> <tr> <td>4 PLACES</td> <td>±--- ±---</td> <td>±--- ±---</td> </tr> <tr> <td>3 PLACES</td> <td>±--- ±---</td> <td>±--- ±---</td> </tr> <tr> <td>2 PLACES</td> <td>±--- ±---</td> <td>±--- ±---</td> </tr> <tr> <td>1 PLACE</td> <td>±--- ±---</td> <td>±--- ±---</td> </tr> </table>		mm	INCH	4 PLACES	±--- ±---	±--- ±---	3 PLACES	±--- ±---	±--- ±---	2 PLACES	±--- ±---	±--- ±---	1 PLACE	±--- ±---	±--- ±---	<b>DIMENSION STYLE</b> MM ONLY	<b>SCALE</b> ---	<b>DESIGN UNITS</b> METRIC	<b>THIRD ANGLE PROJECTION</b>
		mm	INCH																		
4 PLACES	±--- ±---	±--- ±---																			
3 PLACES	±--- ±---	±--- ±---																			
2 PLACES	±--- ±---	±--- ±---																			
1 PLACE	±--- ±---	±--- ±---																			
<b>DRAFT WHERE APPLICABLE MUST REMAIN WITHIN DIMENSIONS</b>	<b>DRAWN BY</b> BENRUGHT <b>CHECKED BY</b> DRYAN <b>APPROVED BY</b> WILHITE	<b>DATE</b> 2000/05/17 <b>DATE</b> 2000/05/17 <b>DATE</b> 2000/05/17	<b>TITLE</b> 10CKT RIBBON CABLE	<b>MATERIAL NO.</b> 92301-0200 <b>DOCUMENT NO.</b> SD-92301-368	<b>MOLEX INCORPORATED</b>	<b>SHEET NO.</b> 1 OF 1															

SHT. 1 OF 1		MRI- SD-92301-368				
MODIFICATION RECORD INDEX						
ECN	ISS.	DATE	INIT.	SHTS. AFFECTED	DESCRIPTION OF MOD.	
E2003-0381	A	00.10.13	BE	1	ORIGINAL RELEASE	
E2006-0851	B	2006/03/16	JK	1	ADDED NOTE 8	

MOLEX EUROPE	REVISE ONLY ON CAD SYSTEM
THIS DRAWING CONTAINS INFORMATION THAT IS PROPRIETARY TO MOLEX INC. & SHOULD NOT BE USED WITHOUT WRITTEN PERMISSION	CAD/CAM FILENAME: MF0028
ISSUE	A