

No. OF PINS	UNITS	DIMENSIONS						
		A	B	C	D	E	F	G
9	inch	1.213	0.984	0.669	0.331	0.760	0.496	0.423
	mm	30.80	24.99	17.00	8.40	19.30	12.60	10.75
15	inch	1.541	1.312	0.996	0.331	1.083	0.496	0.423
	mm	39.15	33.32	25.30	8.40	27.51	12.60	10.75
25	inch	2.088	1.852	1.535	0.331	1.630	0.496	0.423
	mm	53.04	47.04	39.00	8.40	41.40	12.60	10.75
37	inch	2.729	2.500	2.181	0.331	2.276	0.496	0.423
	mm	69.32	63.50	55.40	8.40	57.81	12.60	10.75
50	inch	2.635	2.406	2.079	0.437	2.182	0.598	0.524
	mm	66.93	61.11	52.80	11.10	55.42	15.20	13.30

172-YYY-143RYY1

- SERIES \_\_\_\_\_
- POSITIONS \_\_\_\_\_
- 009 \_\_\_\_\_
- 015 \_\_\_\_\_
- 025 \_\_\_\_\_
- 037 \_\_\_\_\_
- 050 \_\_\_\_\_
- GENDER \_\_\_\_\_
- 1 = MALE \_\_\_\_\_
- TERMINATION \_\_\_\_\_
- 4 = WIRE WRAP \_\_\_\_\_
- SHELL PLATING \_\_\_\_\_
- 3 = NICKEL (GROUND INDENTS) \_\_\_\_\_
- HARDWARE OPTIONS \_\_\_\_\_
- 00 = NO HARDWARE \_\_\_\_\_
- 01 = .098" CLINCH NUT (PCB SIDE) \_\_\_\_\_
- 02 = .236" CLINCH NUT (PCB SIDE) \_\_\_\_\_
- 03 = .236" CLINCH NUT (MATING SIDE) \_\_\_\_\_
- 05 = .237" 4-40 BOARD LOCK \_\_\_\_\_
- 91 = .237" 4-40 SPACER/ BOARD LOCK \_\_\_\_\_
- PLATING OPTIONS \_\_\_\_\_
- 1 = GOLD FLASH \_\_\_\_\_
- 2 = 30MICRO-INCH GOLD \_\_\_\_\_

**MATERIAL:**

SHELL: STEEL, NICKEL PLATED  
 INSULATOR: PA6T, UL94 V-0  
 PROCESS TEMP.: 260°C  
 CONTACT: BRASS

**ELECTRICAL:**

CURRENT RATING: 5 AMPS  
 CONTACT RESISTANCE: 15 mOhms Max.  
 INSULATION RESISTANCE: 1,000 MOhms Min.  
 VOLTAGE: 500VAC FOR 1 MINUTE  
 TEMPERATURE: -50° C TO 100° C

RoHS COMPLIANT

UNITS = inch

DO NOT SCALE FROM DRAWING



THESE DRAWINGS AND SPECIFICATIONS ARE THE PROPERTY OF NorComp AND SHALL NOT BE REPRODUCED, COPIED OR USED AS THE BASIS FOR THE MANUFACTURE OR SALE OF APPARATUS WITHOUT WRITTEN PERMISSION.

DRAWN: P. JENKINS

DATE: 11/23/2005

NorComp

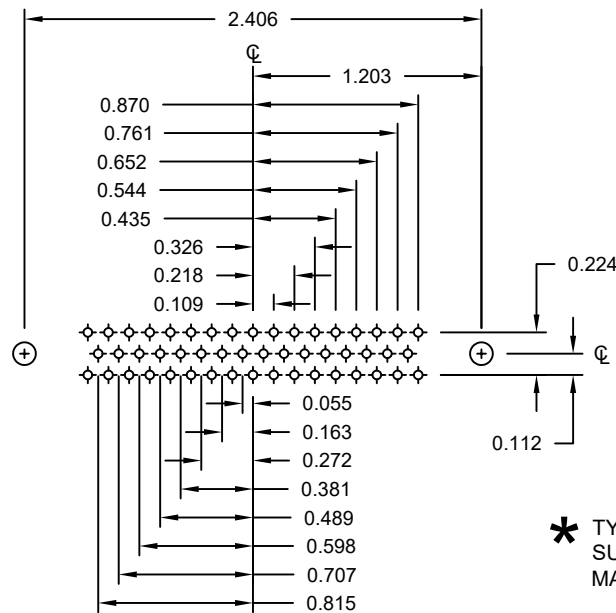
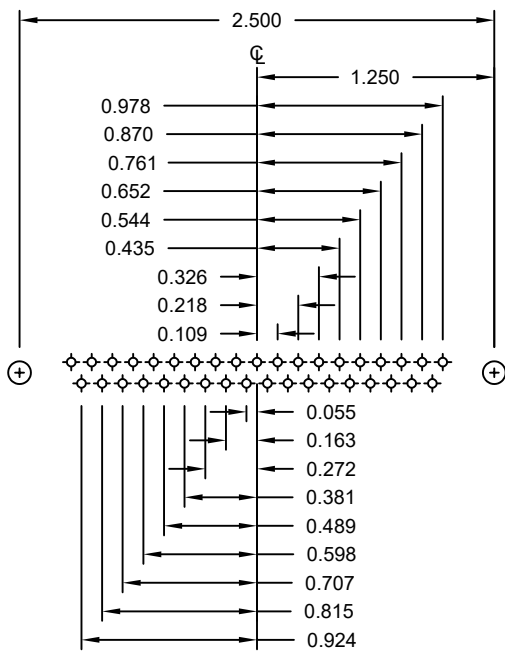
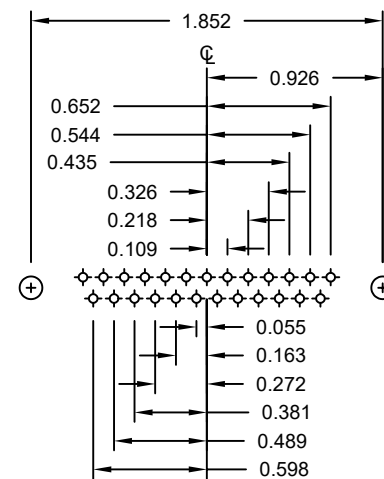
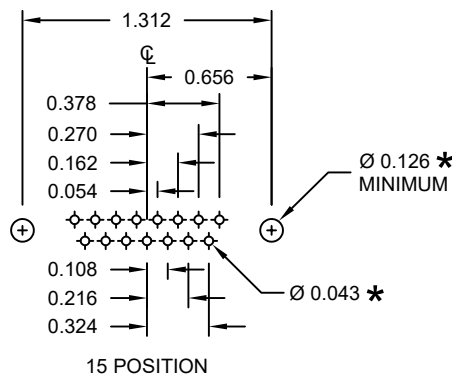
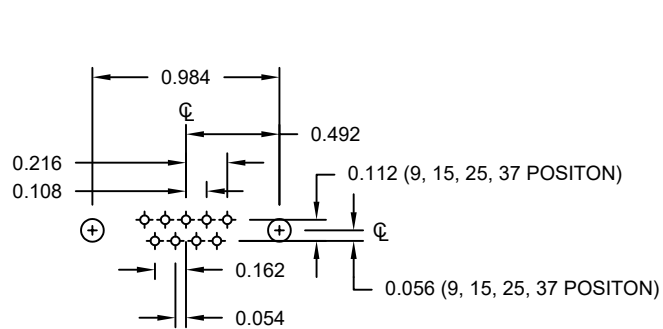
SCALE: NTS

SHEET 1 OF 3

REV 15

DWG NO.

172-YYY-143RYY1



\* TYP. SUGGESTED SIZE MAY NOT BE SUITABLE FOR ALL APPLICATIONS

RoHS COMPLIANT

UNITS = inch

DO NOT SCALE FROM DRAWING



THESE DRAWINGS AND SPECIFICATIONS ARE THE PROPERTY OF NorComp AND SHALL NOT BE REPRODUCED, COPIED OR USED AS THE BASIS FOR THE MANUFACTURE OR SALE OF APPARATUS WITHOUT WRITTEN PERMISSION.

DRAWN:  
P. JENKINS

DATE:  
11/23/2005

NorComp

SCALE:  
NTS

SHEET OF  
2 3

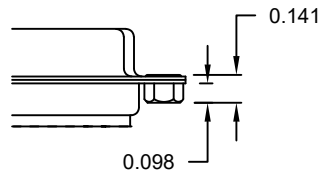
REV  
15

DWG NO.

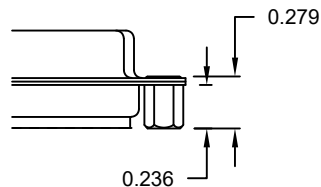
172-YYY-143RYY1

ALL CLINCH-NUTS ARE 4-40 INTERNAL THREADS

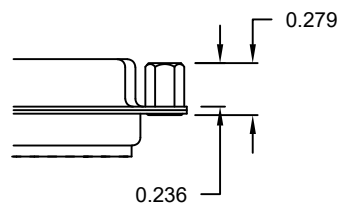
01X ..... 0.098" (PCB SIDE)



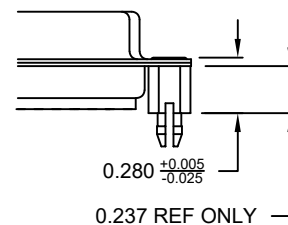
02X ..... 0.236" (PCB SIDE)



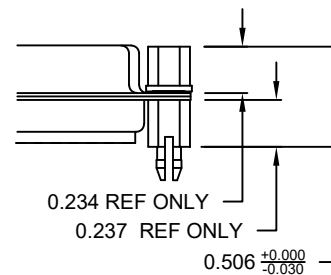
03X..... 0.236" (MATING SIDE)



05X ..... 0.237" (BOARD SIDE)



91X ..... 0.237" (BOARD SIDE)



**TOLERANCE:**  
ALL DIMENSIONS ARE  $\pm 0.010$   
UNLESS OTHERWISE  
SPECIFIED

NOTE: 4-40 FEMALE SCREW LOCK IS REMOVABLE

RoHS COMPLIANT

UNITS = inch

DO NOT SCALE FROM DRAWING



THESE DRAWINGS AND SPECIFICATIONS ARE THE PROPERTY OF NorComp AND SHALL NOT BE REPRODUCED, COPIED OR USED AS THE BASIS FOR THE MANUFACTURE OR SALE OF APPARATUS WITHOUT WRITTEN PERMISSION.

DRAWN:  
P. JENKINS

DATE:  
11/23/2005

NorComp

SCALE:  
NTS

SHEET 3 OF 3

REV 15

DWG NO.

172-YYY-143RYY1