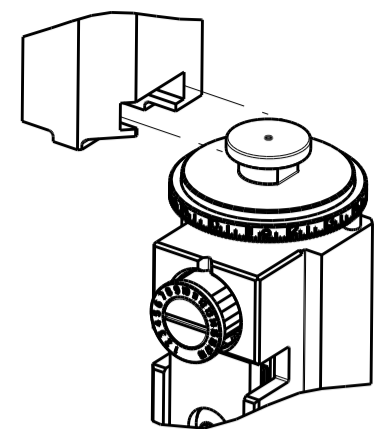


PART NUMBER	REVISION	DESCRIPTION	FEED TYPE
2266760-2	G	FINE CRIMP HEIGHT ADJUST	PNEUMATIC
5-2266760-2	G	SEAL STRIPPER CRIMPER TERMINATING UNIT	PNEUMATIC
7-2266760-2	G	PNEUMATIC AND CRIMP TOOLING KIT	PNEUMATIC
7-2266760-7	A	CRIMP TOOLING KIT	-

ATLANTIC VERSION TERMINATOR INTERFACE ADAPTER



APPLICATOR DATA		
CRIMP	SIZE	TYPE
WIRE	3.60 mm [.142]	F
INSUL	5.00 mm [.197]	F

APPLICATOR INSTRUCTIONS
408-35042

TERMINAL DATA: MOLEX TERMINAL MOLEX CRIMP SPECIFICATION
TERMINAL NAME: MINIFIT SENIOR

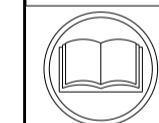
WIRE STRIP LENGTH	INSULATION DIAMETER RANGE
7.50-8.50 mm [.295-.335 IN]	Ø4.40-5.30 mm [.173-.209 IN]

TERMINAL APPLICATION SPECIFICATION
ATS-638911100 Rev E

TERMINALS APPLIED

TE TERMINAL	MOLEX TERMINAL	TE TERMINAL	MOLEX TERMINAL
1572230-1	42817-0011	1572230-8	42817-1114
1572230-2	42817-0012	1572230-9	42817-1014
1572230-3	42817-0010	286535-1	42815-0011
1572230-4	42817-0110	286535-2	42815-0012
1572230-5	42817-0112	286535-3	42815-0010
1572230-6	42817-0019	286535-4	42815-0019
1572230-7	42817-0111	286535-5	42815-0114

WIRE SIZE	CRIMP HEIGHT mm [INCH]	CRIMP HEIGHT REFERENCE SETTING
10 AWG	2.74+/-0.05 [.108+/-0.002]	7.3
12 AWG	2.44+/-0.05 [.096+/-0.002]	10.3



- RECOMMENDED SPARE PARTS
- REFER TO SUPPLIED INSTRUCTION SHEET FOR CLEANING, LUBRICATION AND STORAGE OF APPLICATOR.
- APPLY PART NUMBER 2-23419-6 LOCTITE TO THREADS OF ITEM 242. APPLY PART NUMBER 1-23419-5 LOCTITE TO THREADS OF ITEM 180.
- CRIMP HEIGHT REFERENCE SETTING WAS THE SETTING USED WHEN THE APPLICATOR WAS QUALIFIED AT THE FACTORY. ADJUSTMENT MAY BE NECESSARY WHEN RUNNING APPLICATOR IN THE FIELD.
- TERMINAL LUBRICANT IS RECOMMENDED.
- UNLESS SPECIFIED OTHERWISE TORQUE VALUES SHALL BE USED PER DOCUMENT, 101-35000.

***WARNING**
ON INSTALLATION, SET WIRE DISC TO CRIMP HEIGHT REFERENCE SETTING FOR LARGEST WIRE SIZE. CRIMP HEIGHT REFERENCE SETTINGS GREATER THAN THE VALUE SHOWN MAY CAUSE DAMAGE TO THE CRIMP TOOLING. REFER TO THE INSTRUCTION SHEET FOR PROPER SETUP AND ADJUSTMENTS.

LOC	DIST	REV	DATE	BY	CHK
A	66	D	14DEC2018	KH	CT
		E	16APR2019	FJ	TE
		F	08AUG2019	FJ	TE
		G	16AUG2019	FZ	TE

QTY	LOC	DIST	REV	DATE	BY	CHK	DESCRIPTION	ITEM NO
-	-	1	-	2-1803583-1	APPLICATOR BASIC ASSEMBLY, SF			292
-	2	2	2	2168083-1	SCR, SKT HD CAP, RoHS, M3 X 8.0			269
-	1	1	1	1633782-3	FENCE			267
-	1	1	1	1803078-2	SPACER, PRECISION			259
-	1	1	1	2119641-1	FEED CAM, AIR FEED			248
-	1	1	1	2119082-2	CAM, SNAIL, INSULATION ADJUSTMENT			244
-	1	1	1	2079764-1	WASHER, WAVE SPRING, CREST-TO-CREST			243
-	1	1	1	2119083-1	RETAINER, INSULATION DIAL			242
-	1	1	1	7-18023-7	SCR, SKT HD CAP M3 X 4.0			241
-	1	1	1	2844940-1	AIR FEED MODULE			238
-	-	1	-	4-1722335-3	STRIPPER, SIDE FEED			182
-	-	1	-	1-5018030-0	NUT, HEX, REG, RoHS, M3.5			181
-	-	1	-	4-1752354-3	STANDOFF, HOLD-DOWN			180
-	-	1	-	993111-1	PIN, SLOTTED SPRING 3.0 X 20.0			177
-	-	1	-	5-22280-0	SPRING, COMPRESSION			176
-	-	1	-	1752353-3	GUIDE PIN, HOLDDOWN			175
-	-	1	-	1901680-2	GUIDE PIN, HOLDDOWN			174
-	REF	REF	REF	994970-2	COUNTER, MAGNETIC			164
-	1	1	1	2119955-1	ASSY, LUBRICATOR, SIDE FEED			113
-	1	1	1	2844908-1	SCREW, LOCKING			99
-	1	1	1	2844907-1	POST, LOCKING			98
-	1	1	1	1-455888-6	SPACER, CRIMPER			82
-	1	1	1	1803607-3	DOCUMENTATION PACKAGE			71
-	1	1	1	2119791-6	DEPRESSOR, WIRE			70
-	1	1	1	2119740-1	TAG, IDENTIFICATION			67
-	2	2	2	2168078-1	SCREW, DRIVE, RH, RoHS, 2 x .188			66
-	1	1	1	2168083-2	SCR, SKT HD CAP, RoHS, M4 X 8.0			60
-	1	1	1	5-18022-5	SCR, HEX HD CAP, M4 X 6.0			59
-	1	1	1	1338683-8	FEED PAWL			56
-	4	4	4	2168083-3	SCR, SKT HD CAP, RoHS, M4 X 12.0			54
-	2	2	2	2168083-3	SCR, SKT HD CAP, RoHS, M4 X 12.0			53
-	1	1	1	5018030-1	NUT, HEX, REG, RoHS, M3			52
-	1	1	1	811242-6	BUMPER, HOLD DOWN			51
-	1	1	1	690753-2	SPACER, TONKER			50
-	1	1	1	18023-9	SCR, SKT HD CAP M4 X 6.0			49
-	1	-	1	1803583-9	APPLICATOR BASIC ASSEMBLY, SF			46
-	1	1	1	1803515-2	RAM ASSEMBLY, SF ATLANTIC			44
-	1	1	1	1803602-2	SCR, BHSC, RoHS (M8 X 40)			41
-	1	1	1	1752356-3	SUPPORT, TERMINAL			34
-	2	2	2	1-2079383-3	SCR, BHSC, RoHS (M4 X 25)			33
-	2	2	2	3-2844962-5	SPACER, CYLINDRICAL, STRIP GUIDE			30
-	1	1	1	2844992-1	ASSEMBLY, STRIP GUIDE			29
-	1	1	1	455888-5	SPACER, CRIMPER			28
-	1	1	1	1320928-6	STRIP GUIDE			24
-	1	-	1	2168083-2	SCR, SKT HD CAP, RoHS, M4 X 8.0			21
-	2	-	2	1-18028-2	WASHER, FLAT, REG M4			20
-	1	-	1	2119533-1	STRIPPER, SIDE FEED			19
-	1	1	1	2119806-1	INSERT, SHEAR			13
-	1	1	1	3-22280-3	SPRING, COMPRESSION			12
-	1	1	1	1-356885-4	STOP, SHEAR			11
-	1	1	1	2119805-1	SHEAR HOLDER, FRONT			10
-	1	1	1	1803095-6	FLOATING SHEAR, FRONT			9
-	1	2	1	1803252-6	ANVIL, COMBINATION			8
-	1	1	1	2-240641-8	SPACER			7
-	-	-	-	-	-			6
-	1	1	1	1-2119757-5	DEPRESSOR, SHEAR			5
-	1	1	1	3-238011-8	BLOCK, CRIMPER SPACER			4
-	1	2	1	8-1803016-0	CRIMPER, INSULATION F			3
-	1	1	1	455888-1	SPACER, CRIMPER			2
-	1	2	1	9-1633738-3	CRIMPER, WIRE			1

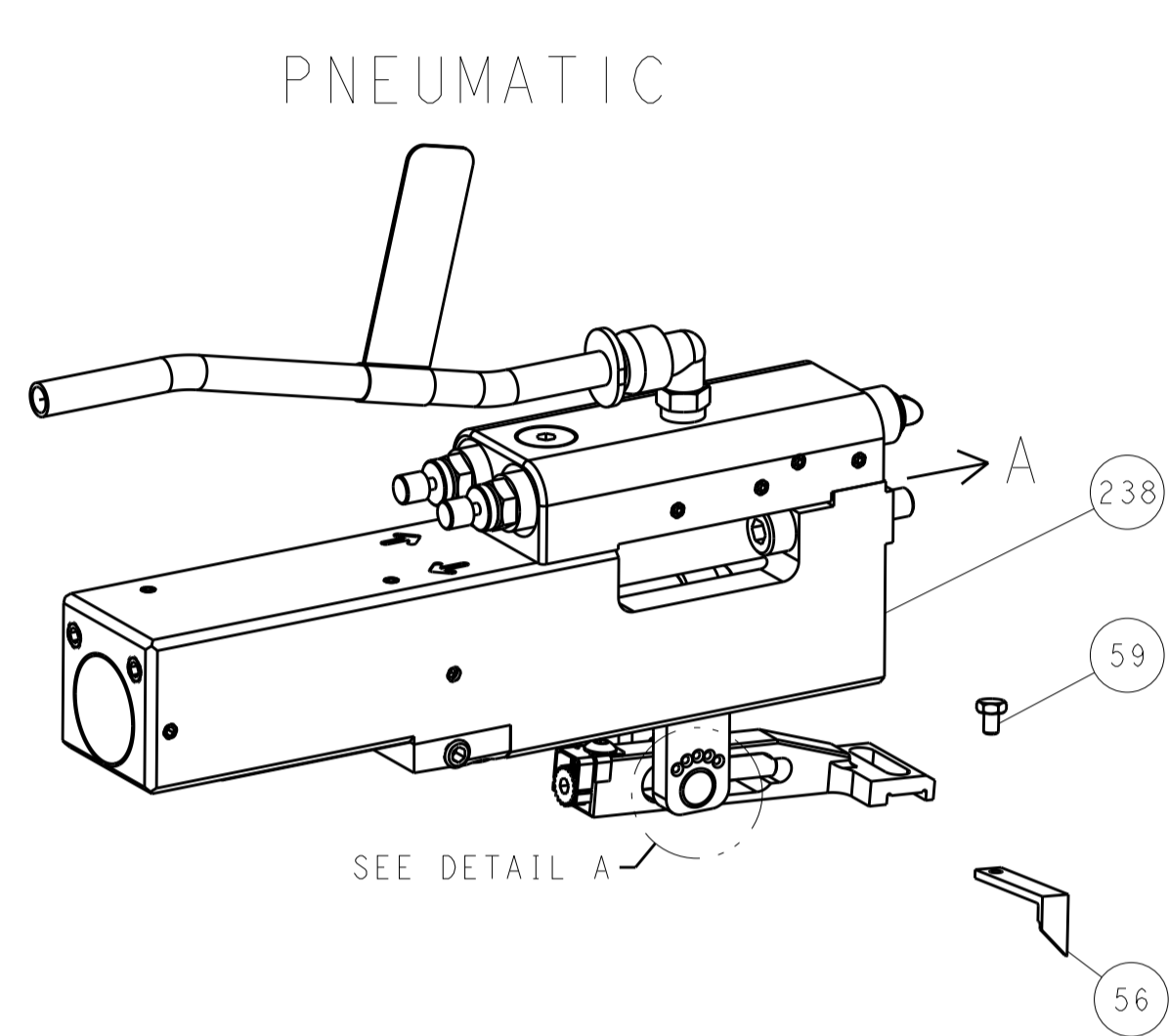
ATLANTIC VERSION
Shown on sheets 1 of 4 & 2 of 4
(Pacific version shown on sheets 3 of 4 & 4 of 4)

DIMENSIONS: mm 		TOLERANCES UNLESS OTHERWISE SPECIFIED: 0 PLC ± 1 PLC ± 2 PLC ± 3 PLC ± 4 PLC ± ANGLES ± FINISH		DWN: B. WEAVER 29JUL2015 CHK: G. BAILEY 29JUL2015 APVD: G. BAILEY 29JUL2015		TE Connectivity Harrisburg, PA 17105-3608	
MATERIAL:		WEIGHT:		NAME: Ocean Side Feed Applicator		SIZE: A1 00779 C=2266760	
CUSTOMER ACCESSIBLE PRODUCTION DRAWING		SCALE: 1:2		SHEET 1 OF 4		REV G	

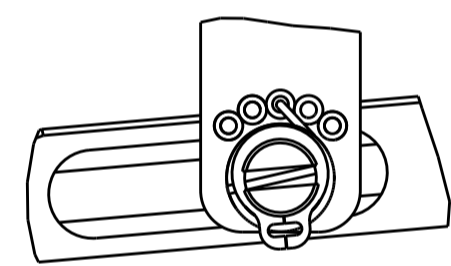
LOC	DIST	REVISIONS					
A	66	P	LTM	DESCRIPTION	DATE	DWN	APVD
		-	-	SEE SHEET 1	-	-	-

FEED TYPE

PNEUMATIC

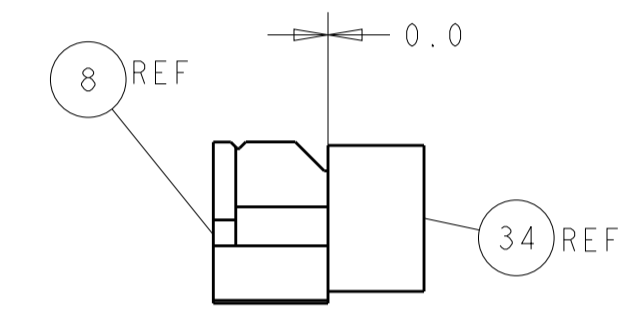
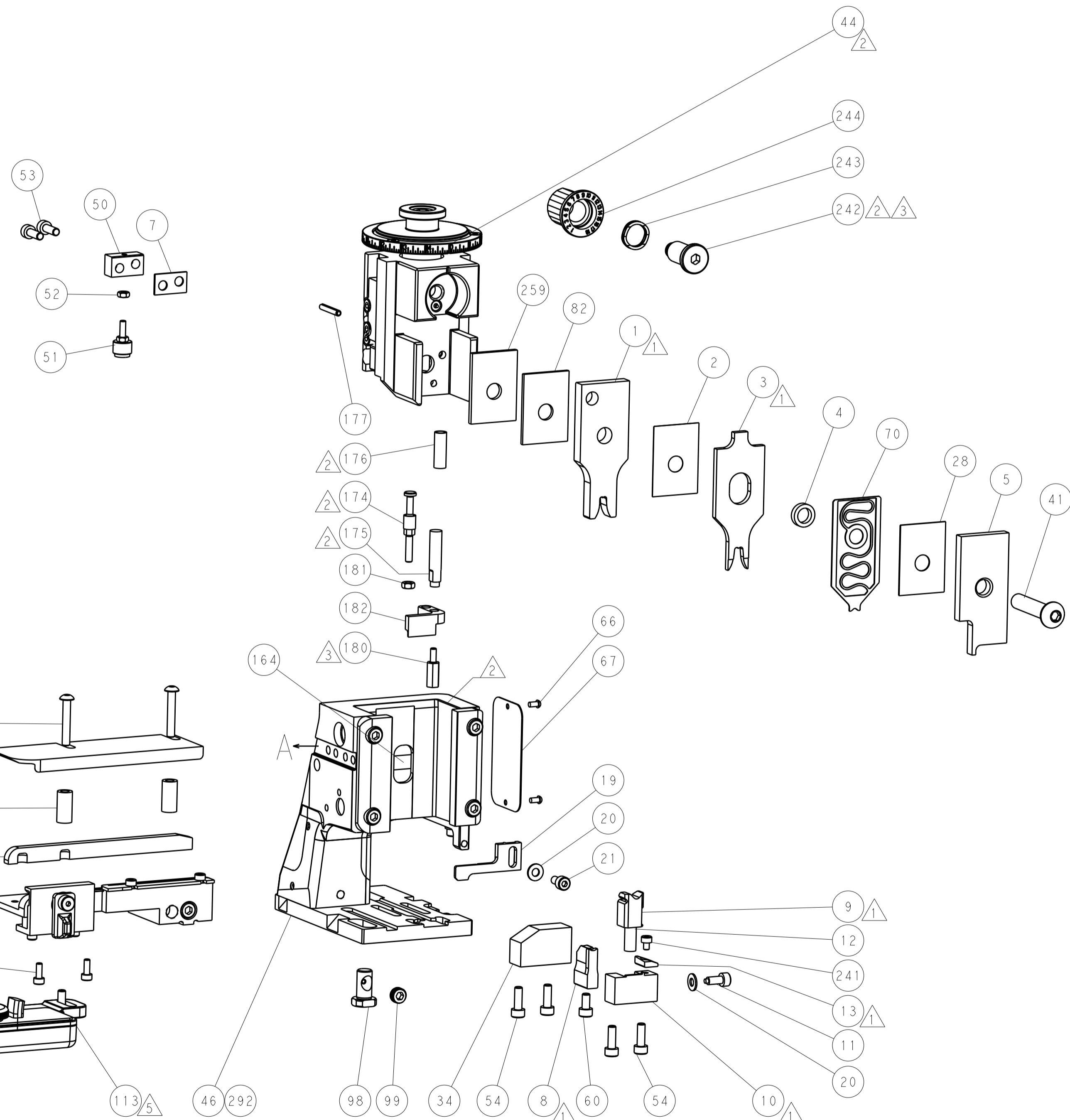
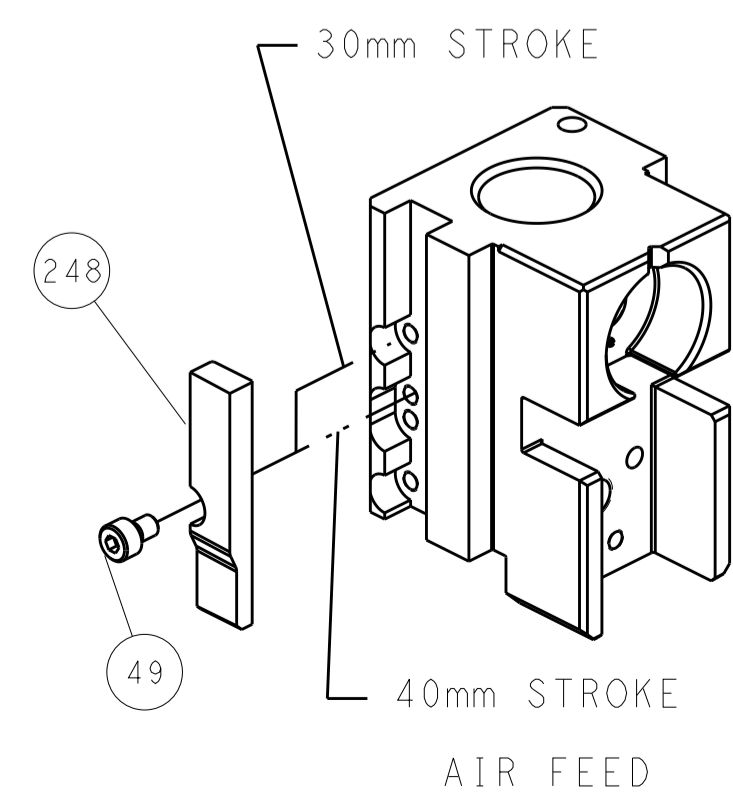


FEED SPRING SETTING POSITION (SHOWN FROM REAR SIDE)

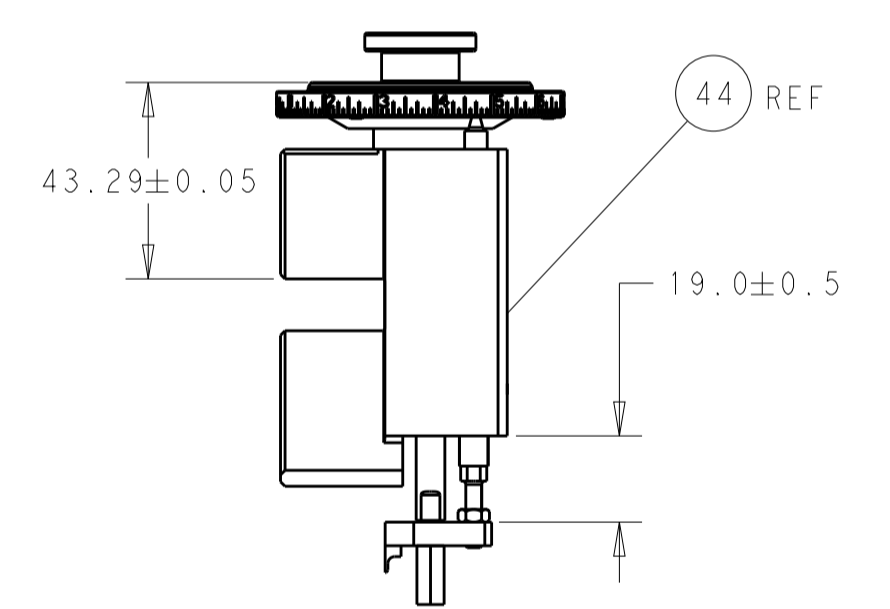


DETAIL A

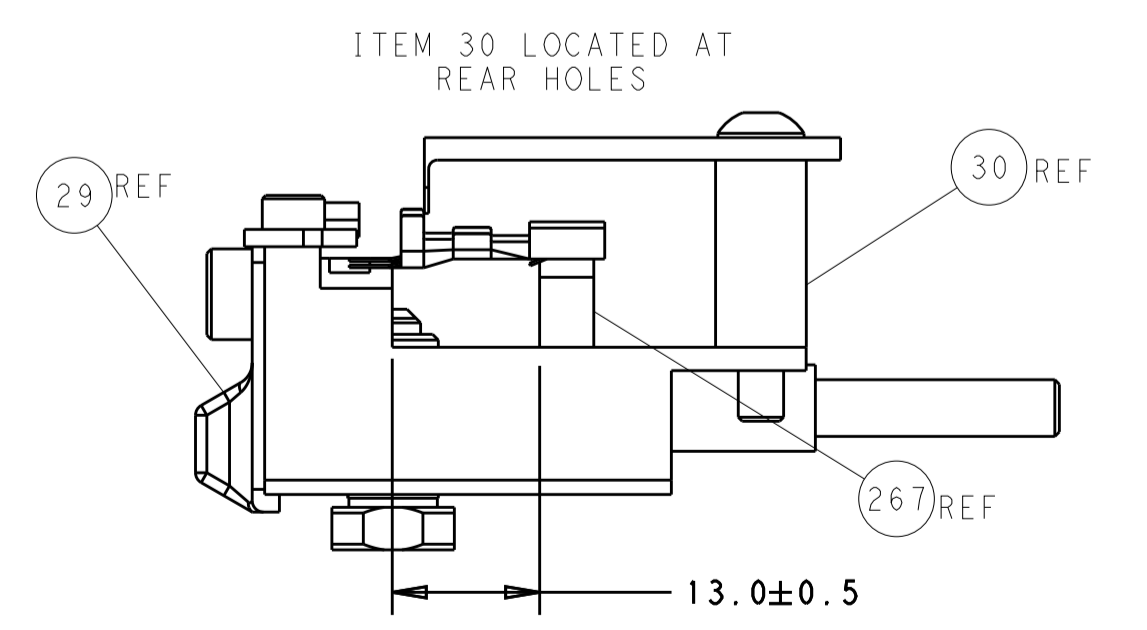
CAM POSITIONS



TERMINAL SUPPORT LOCATION



RAM SET-UP



FEED TRACK POSITION GUIDE BY INSULATION BARREL

ATLANTIC VERSION
 Shown on sheets 1 of 4 & 2 of 4
 (Pacific version shown on sheets 3 of 4 & 4 of 4)

DIMENSIONS:		TOLERANCES UNLESS OTHERWISE SPECIFIED:		DWN B. WEAVER 29JUL2015		TE Connectivity	
mm	0 PLC ±	1 PLC ±	2 PLC ±	3 PLC ±	4 PLC ±	Harrisburg, PA 17105-3608	
MATERIAL:		FINISH:		CHK G. BAILEY 29JUL2015		NAME	
				APVD G. BAILEY 29JUL2015		Ocean Side Feed Applicator	
				PRODUCT SPEC		SIZE CAGE CODE DRAWING NO	
				APPLICATION SPEC		A1 00779 C=2266760	
				WEIGHT		RESTRICTED TO	
				Customer Accessible Production Drawing		SCALE 1:2 SHEET 2 OF 4 REV G	

PART NUMBER	REVISION	DESCRIPTION	FEED TYPE
2-2266760-2	G	FINE CRIMP HEIGHT ADJUST	PNEUMATIC
7-2266760-7	A	CRIMP TOOLING KIT	-

PACIFIC VERSION TERMINATOR
 INTERFACE ADAPTER



APPLICATOR DATA		
CRIMP	SIZE	TYPE
WIRE	3.60 mm [.142]	F
INSUL	5.00 mm [.197]	F

APPLICATOR INSTRUCTIONS
 408-35042

TERMINAL DATA: MOLEX TERMINAL MOLEX CRIMP SPECIFICATION			
TERMINAL NAME: MINIFIT SENIOR			
WIRE STRIP LENGTH	INSULATION DIAMETER RANGE		
7.50-8.50 mm [.295-.335 IN]	∅4.40-5.30 mm [.173-.209 IN]		
TERMINAL APPLICATION SPECIFICATION			
TERMINALS APPLIED			
TE TERMINAL	MOLEX TERMINAL	TE TERMINAL	MOLEX TERMINAL
1572230-1	42817-0011	1572230-8	42817-1114
1572230-2	42817-0012	1572230-9	42817-1014
1572230-3	42817-0010	286535-1	42815-0011
1572230-4	42817-0110	286535-2	42815-0012
1572230-5	42817-0112	286535-3	42815-0010
1572230-6	42817-0019	286535-4	42815-0019
1572230-7	42817-0111	286535-5	42815-0114

WIRE SIZE	CRIMP HEIGHT mm [INCH]	CRIMP HEIGHT REFERENCE SETTING
10 AWG	2.74 +/- 0.05 [.108 +/- .002]	7.3
12 AWG	2.44 +/- 0.05 [.096 +/- .002]	10.3

- RECOMMENDED SPARE PARTS
- REFER TO SUPPLIED INSTRUCTION SHEET FOR CLEANING, LUBRICATION AND STORAGE OF APPLICATOR.
- APPLY PART NUMBER 2-23419-6 LOCTITE TO THREADS OF ITEM 242.
- CRIMP HEIGHT REFERENCE SETTING WAS THE SETTING USED WHEN THE APPLICATOR WAS QUALIFIED AT THE FACTORY. ADJUSTMENT MAY BE NECESSARY WHEN RUNNING APPLICATOR IN THE FIELD.
- TERMINAL LUBRICANT IS RECOMMENDED.
- 6. UNLESS SPECIFIED OTHERWISE TORQUE VALUES SHALL BE USED PER DOCUMENT, 101-35000.

***WARNING**
 ON INSTALLATION, SET WIRE DISC TO CRIMP HEIGHT REFERENCE SETTING FOR LARGEST WIRE SIZE. CRIMP HEIGHT REFERENCE SETTINGS GREATER THAN THE VALUE SHOWN MAY CAUSE DAMAGE TO THE CRIMP TOOLING. REFER TO THE INSTRUCTION SHEET FOR PROPER SETUP AND ADJUSTMENTS.

LOC	DIST	REV	DATE	BY	APPD
A	66				

REVISIONS					
REV	DATE	DESCRIPTION	DATE	BY	APPD
-	-	SEE SHEET 1	-	-	-
-	2	2168083-1	SCR, SKT HD CAP, RoHS, M3 X 8.0		269
-	1	1633782-3	FENCE		267
-	1	1803078-2	SPACER, PRECISION		259
-	1	2119082-2	CAM, SNAIL, INSULATION ADJUSTMENT		244
-	1	2079764-1	WASHER, WAVE SPRING, CREST-TO-CREST		243
-	1	2119083-1	RETAINER, INSULATION DIAL		242
-	1	7-18023-7	SCR, SKT HD CAP M3 X 4.0		241
-	1	2844940-1	AIR FEED MODULE		238
-	REF	994970-2	COUNTER, MAGNETIC		164
-	1	2119641-2	FEED CAM, AIR FEED		151
-	1	2168083-8	SCR, SKT HD CAP, RoHS, M4 X 16		144
-	4	2168083-9	SCR, SKT HD CAP, RoHS, M4 X 20		143
-	1	1-1803583-0	APPLICATOR BASIC ASSEMBLY, SF		141
-	1	1803516-2	RAM ASSEMBLY, SF PACIFIC		140
-	1	2119955-1	ASSY, LUBRICATOR, SIDE FEED		113
-	1	2844908-1	SCREW, LOCKING		99
-	1	2844907-1	POST, LOCKING		98
-	1	1-455888-6	SPACER, CRIMPER		82
-	1	1803607-3	DOCUMENTATION PACKAGE		71
-	1	2119791-6	DEPRESSOR, WIRE		70
-	1	2119740-1	TAG, IDENTIFICATION		67
-	2	2168078-1	SCREW, DRIVE, RH, RoHS, 2 x .188		66
-	1	5-18022-5	SCR, HEX HD CAP, M4 X 6.0		59
-	1	1338683-8	FEED PAWL		56
-	2	2168083-3	SCR, SKT HD CAP, RoHS, M4 X 12.0		53
-	1	5018030-1	NUT, HEX, REG, RoHS, M3		52
-	1	811242-6	BUMPER, HOLD DOWN		51
-	1	690753-2	SPACER, TONKER		50
-	1	18023-9	SCR, SKT HD CAP M4 X 6.0		49
-	1	1803602-2	SCR, BHSC, RoHS (M8 X 40)		41
-	1	1752356-3	SUPPORT, TERMINAL		34
-	2	1-2079383-3	SCR, BHSC, RoHS (M4 X 25)		33
-	2	3-2844962-5	SPACER, CYLINDRICAL, STRIP GUIDE		30
-	1	2844992-1	ASSEMBLY, STRIP GUIDE		29
-	1	455888-5	SPACER, CRIMPER		28
-	1	1320928-6	STRIP GUIDE		24
-	1	2168083-2	SCR, SKT HD CAP, RoHS, M4 X 8.0		21
-	2	1-18028-2	WASHER, FLAT, REG M4		20
-	1	2119533-1	STRIPPER, SIDE FEED		19
-	1	2119806-1	INSERT, SHEAR		13
-	1	3-22280-3	SPRING, COMPRESSION		12
-	1	1-356885-4	STOP, SHEAR		11
-	1	2119805-1	SHEAR HOLDER, FRONT		10
-	1	1803095-6	FLOATING SHEAR, FRONT		9
-	1	1803252-6	ANVIL, COMBINATION		8
-	1	2-240641-8	SPACER		7
-	-	-	-		6
-	1	1-2119757-5	DEPRESSOR, SHEAR		5
-	1	3-238011-8	BLOCK, CRIMPER SPACER		4
-	1	8-1803016-0	CRIMPER, INSULATION F		3
-	1	455888-1	SPACER, CRIMPER		2
-	1	9-1633738-3	CRIMPER, WIRE		1

PACIFIC VERSION
 Shown on sheets 3 of 4 & 4 of 4
 (Atlantic version shown on sheets 1 of 4 & 2 of 4)

DIMENSIONS:		TOLERANCES UNLESS OTHERWISE SPECIFIED:		MATERIAL:		FINISH:	
mm	0 PLC ±	1 PLC ±	2 PLC ±	3 PLC ±	4 PLC ±	ANGLES ±	

DATE	29 JUL 2015	BY	B. WEAVER
CHK	29 JUL 2015	BY	G. BAILEY
APPD	29 JUL 2015	BY	G. BAILEY

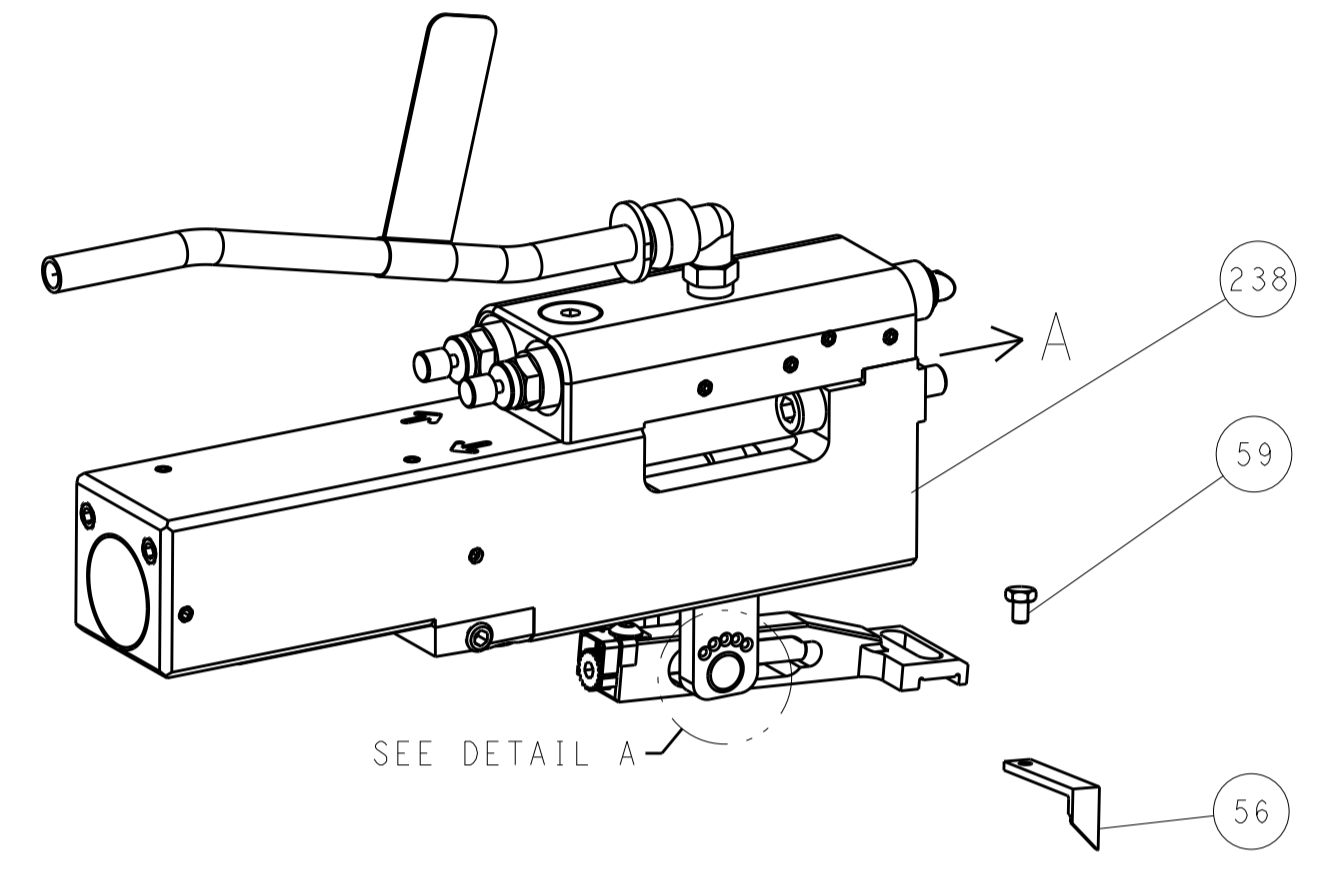
NAME	Ocean Side Feed Applicator		
SIZE	CAGE CODE	DRAWING NO	RESTRICTED TO
A1	00779	2266760	

Customer Accessible Production Drawing SCALE 1:2 SHEET 3 OF 4 REV G

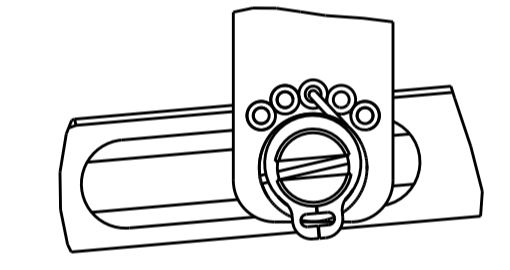
LOC	DIST	REV	DATE	BY	APP'D
A	66				

FEED TYPE

PNEUMATIC

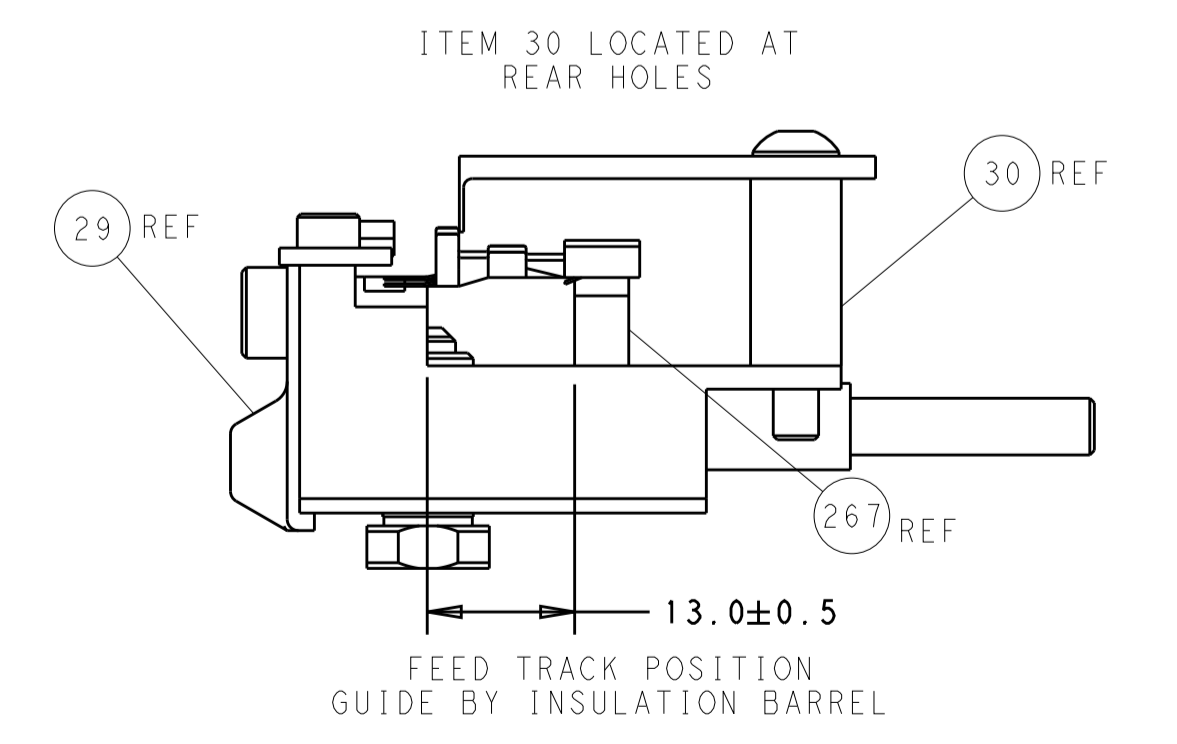
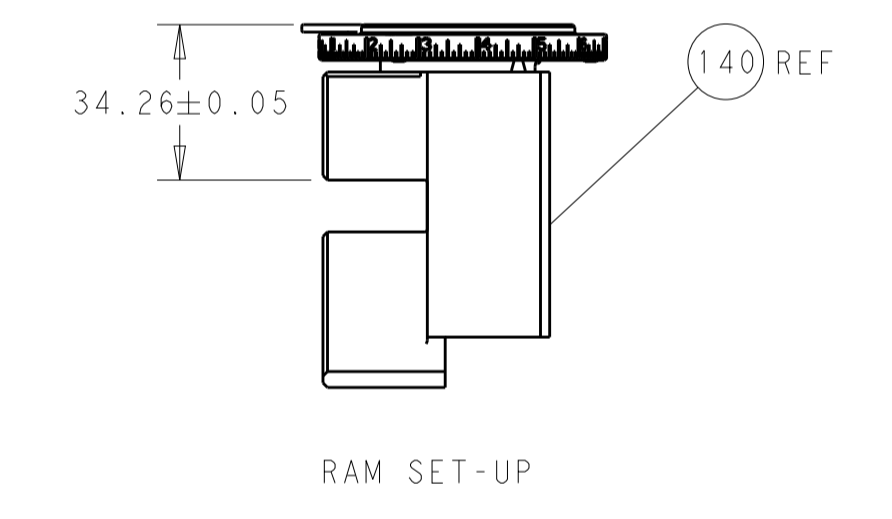
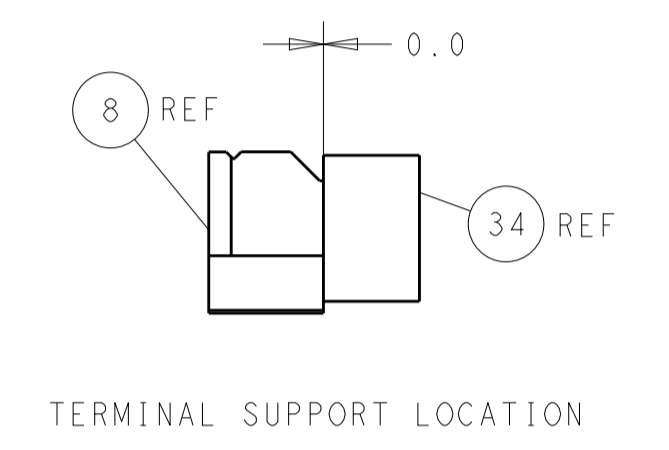
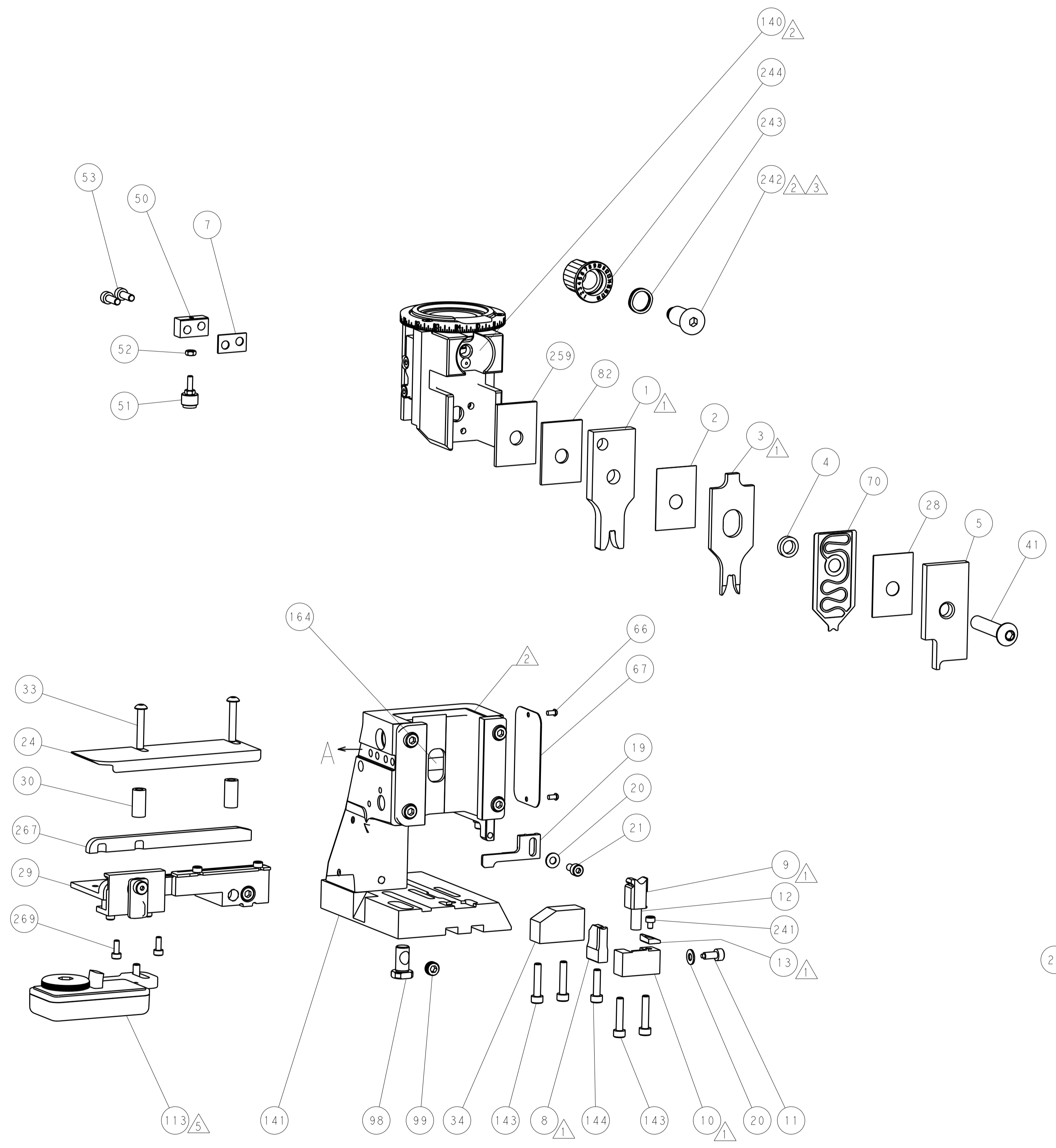
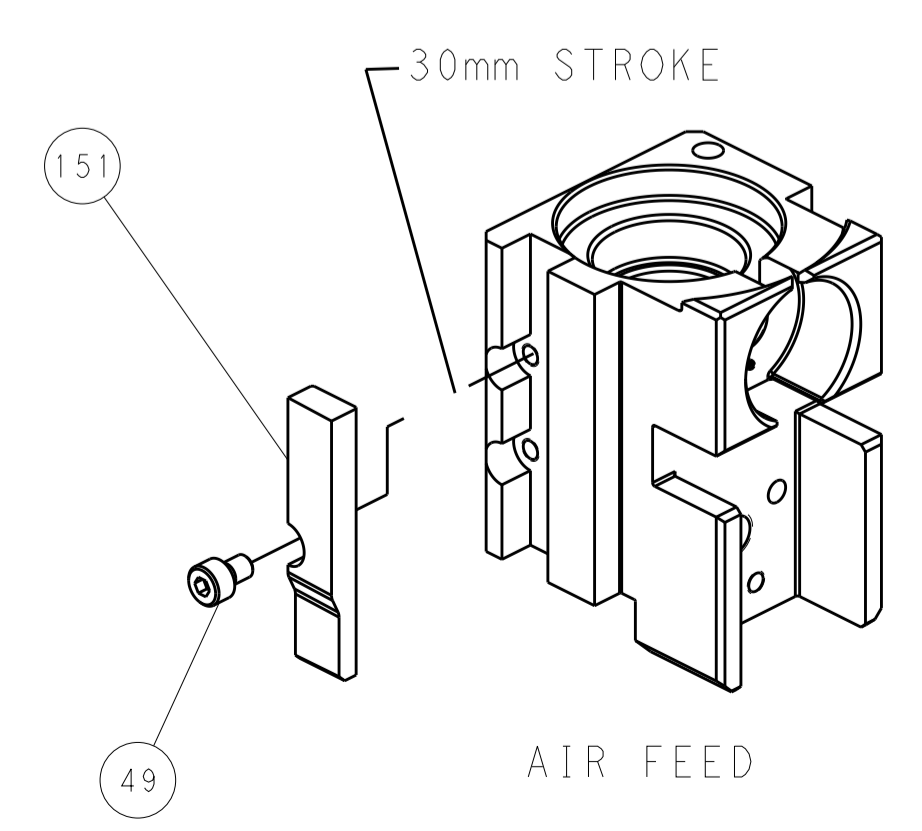


FEED SPRING SETTING POSITION (SHOWN FROM REAR SIDE)



DETAIL A

CAM POSITIONS



PACIFIC VERSION
 Shown on sheets 3 of 4 & 4 of 4
 (Atlantic version shown on sheets 1 of 4 & 2 of 4)

<small>THIS DRAWING IS UNPUBLISHED. RELEASED FOR PUBLICATION 2015. IT IS THE PROPERTY OF TYCO ELECTRONICS CORPORATION. IT IS TO BE USED ONLY FOR THE PURPOSES AND IN THE QUANTITIES SPECIFIED IN THE ORDER. IT IS TO BE RETURNED TO TYCO ELECTRONICS CORPORATION IF NOT SO. CONTACT TYCO ELECTRONICS CORPORATION FOR MORE INFORMATION.</small>		DWN: B. WEAVER 29 JUL 2015 CHK: G. BAILEY 29 JUL 2015 APVD: G. BAILEY 29 JUL 2015	TE Connectivity Harrisburg, PA 17105-3608
DIMENSIONS: mm TOLERANCES UNLESS OTHERWISE SPECIFIED: 0 PLC ± 1 PLC ± 2 PLC ± 3 PLC ± 4 PLC ± ANGLES ±		NAME: Ocean Side Feed Applicator SIZE: A1 CAGE CODE: 00779 DRAWING NO: C=2266760	RESTRICTED TO:
MATERIAL:		WEIGHT:	SCALE: 1:2 SHEET: 4 OF 4 REV: G